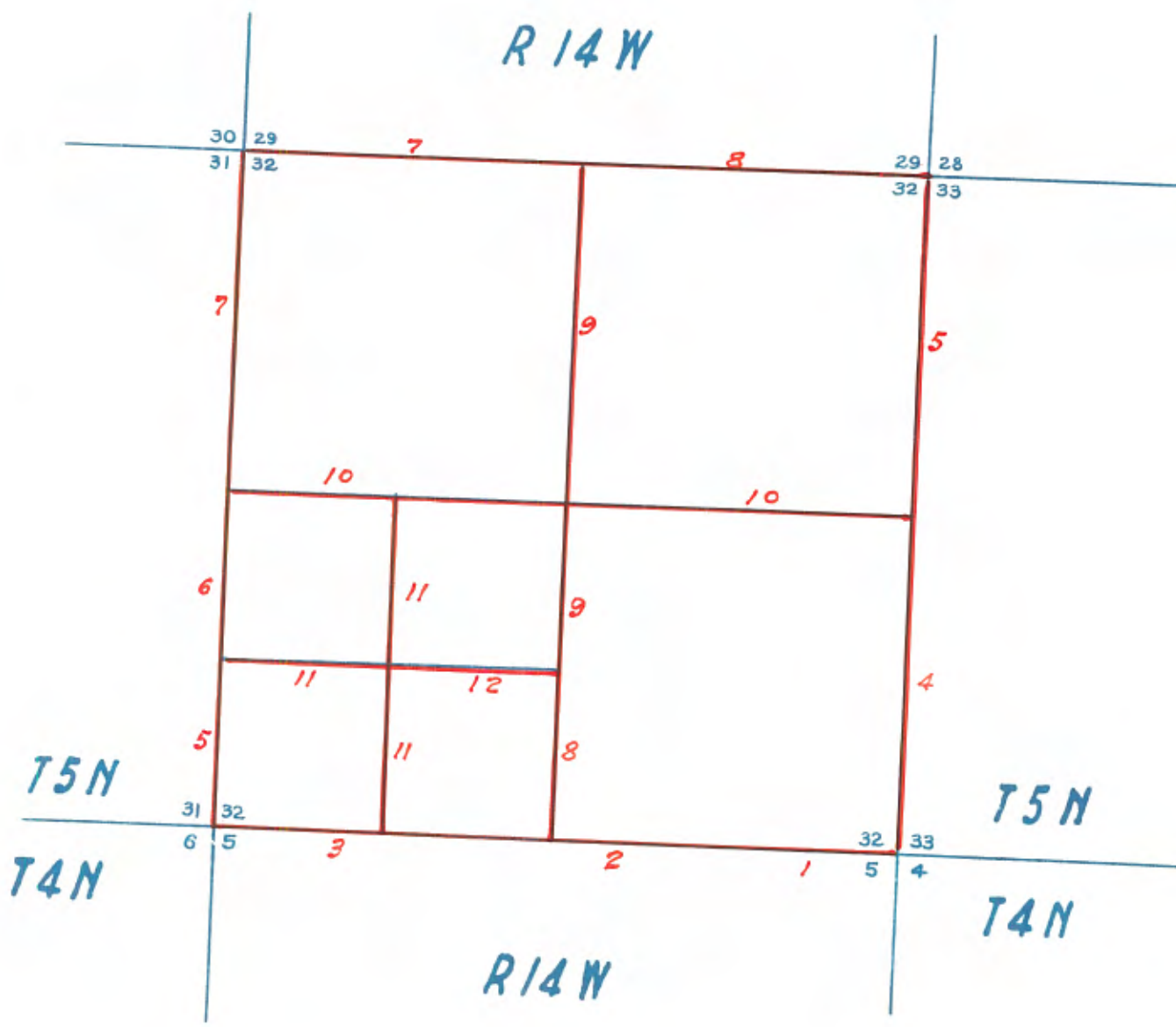


FIELD NOTES OF A
DEPENDENT RESURVEY AND SUBDIVISION OF
SECTION 32 T5N R14W

*Copied from photostatic copies
furnished by the U.S. Bureau of
Land Management - San Francisco.*



T.5 N., R.14 W.

Chains

Resurveys and surveys in Section 32, T.5 N., R.14 W., were executed with Buff & Buff transit No. 24849 and Gurley Transit No. 38123. For description and tests of instrumental equipment see surveys in T.4 N., R.13 W., executed under this Group.

T.5N., R.14 W., was originally surveyed by W. H. Norway, in 1879. Resurveys executed by Los Angeles County in 1925 present a reestablishment and remonumentation of original corners with brass capped iron posts, 2 ins. in diameter, firmly set in concrete base. These monuments are sound and permanent in construction, and are adopted with only slight modification as presenting satisfactory evidence of the original survey.

Preliminary to resurvey all lines of the original survey were retraced and the positions thoroughly verified. The true line results are notes herein.

Dec. 11, 1947, at the $\frac{1}{4}$ sec. cor. of Secs. 5 and 32, Tps. 4 & 5 N., R.14 W., in latitude $34^{\circ}28'N.$, and longitude $118^{\circ}22'15"W.$, at 2h. 13m.30s., p.m., l.m.t., observe Polaris, making three sights each with the telescope in direct and reversed positions, noting the azimuth position of a sharply defined point about $\frac{1}{2}$ mile north, in mean position $68'$ west of star.

Reduced bearing to reference mark	N.0°03'E.
Mean observed altitude	$34^{\circ}25'$
Reduced latitude	$34^{\circ}27'48"N.$
Observed magnetic declination is	$15\frac{1}{2}^{\circ}E.$

The resurvey of the boundaries of section 32, and a limited subdivision of section survey is undertaken to provide a basis for disposal of public land in the SW $\frac{1}{4}$ of said section, under Act of June 1, 1938, 52 Stat. 609; U.S.C. 682a.

Dependent Resurvey of Part of the South Boundary,
T.5 N., R.14 W.

The cor. of secs. 4, 5, 32 and 33, Tps. 4 & 5 N., R.14W., is marked by an iron post monument, 2 ins. diam., 24 ins. above ground, firmly set in concrete base and supported in a mound of stone, 5 ft. base, to top. Additionally mark brass cap to read

COUNTY SURVEYORS
T5N
S 32 S 33
R14W
S 5 S 4
USBM1947
T4N
MONUMENT

N.89°36'W., bet. secs. 5 and 32.

Dependent Resurvey of Part of the South Boundary
T.5 N., R.14 W.

Chains

Over mountainous land, through scattered undergrowth; desc. 80 ft. over SW. slope.

- 7.20 Gully, course SW., continue descent 20 ft.
- 9.00 Draw, course N.80°W. Along N. slope, descend slightly.
- 13.00 Same draw, in bend from NE. to NW. Along S. side of canyon.
- 16.40 Desc. 50 ft. over NW. slope.
- 19.90 Gully, course N.10°W. Along N. slope.
- 20.23 Point for E. 1/16 sec. cor. of secs. 5 and 32, at proportionate distance.

Set an iron post, 3 ft. long, 1 in. diam., 31 ins. in the ground, with brass cap mkd.

E $\frac{1}{16}$ S 32
S 5
1947

Raise a mound of stone, 2½ ft. base, 1½ ft. high, N of corner.

- 20.60 Short spur, slopes N.20°W. Desc. 110 ft. over W. slope.
- 26.00 Ravine, course NW. Asc. 10 ft.
- 28.00 Spur, slopes N. soon turning to NW. Desc. 190 ft. over broken NW slope.
- 28.60 Gully, course NW.
- 36.10 Ravine, course N. 60°W.
- 38.65 Point of rocky spur, slopes N.
- 39.90 Gully, course S., turning to W. and NW. Along S. slope.
- 40.00 Telephone line, bears NE. and SW.
- 40.46 Point for ¼ sec. cor. of secs. 5 and 32, at record distance from witness ¼ sec. cor., marked by an iron post, 2 ins. diam., 3 ins. above ground, firmly set in concrete base, 6 ins. diam. Additionally mark brass cap to read

COUNTY SURVEYOR
T5N
R14W S 32 ¼ COR
S 5
T4N
US BLM 1947
RE 2177
MONUMENT

N.89°26'W., beginning new measurement.

- Desc. 20 ft. over broken S. slope.
- 2.55 Ravine, course NW.
- 3.003 The witness ¼ sec. cor., (record dist., 5.00 chs.) marked by an iron post, 2 ins. diam., 2 ft. above ground, in concrete form, 6 ins. diam., firmly set, and in a mound of stone, 3 ft. base, to top. Additionally mark brass cap to read.

Dependent Resurvey of part of the South Boundary
T.5 N., R.14 W.

Chains

COUNTY SURVEYOR

T5N

W14

R14W	SEC	32	
	SEC	5	COR

T4N

US BLM 1947

MONUMENT

- 4.10 Road, bears NE. and S., in wash in Tick Canyon, course irregularly to SW. Asc. 170 ft. over E. slope.
- 14.20 Spur, slopes S. Desc. 70 ft.
- 16.30 Ravine, course S. Asc. 20 ft.
- 18.00 Small spur, slopes S. Over broken S. slope.
- 19.80 Gully, course S., from NW.
- 21.82 Point for W. 1/16 sec. cor. of secs. 5 and 32, at proportionate distance. This point is on a cut bank of wash, or gully, and affords an insecure position for a corner monument.

Establish a witness monument S.42°E., 44 1/2 lks. distant;

Set an iron post, 3 ft. long, 1 in. diam., 3/4 ins. in the ground, with brass cap mkd.

Bury a granite stone, 6x4x4 ins., marked + alongside iron post,

Raise a flat mound of stone, 3 ft. base, 6 ins. high, around post.

- 21.90 Cut wash, 10 lks. wide, 4 ft. deep, course NE., turning to SE. Asc. 210 ft.
- 29.00 Short spur, slopes S. Desc. 50 ft.
- 32.00 Ravine, course S. Asc. 130 ft. over E. slope.
- 38.20 Spur, slopes S. Desc. 140 ft. over SW. slope.
- 43.64 The cor. of secs. 5, 6, 31 and 32, marked by an iron post, 2 ins. diam., 16 ins. above ground, firmly set in concrete base, 6 ins. diam., and in a mound of stone, 3 ft. base, to top. Additionally mark brass cap to read

COUNTY SURVEYOR

R14W

T5N

R14W	S 31	S 32
	S 6	S 5

COR

US BLM 1947

T4N

MONUMENT

Dependent Resurvey of Part of the Subdivision, T.5 N., R.14 W.

Chains

Land, mountainous.
Soil, rocky, 3rd. and 4th rate.
Scattered cedar, scrub oak, sage, cacti.

From the cor. of secs. 4, 5, 32 and 33, on the S. bdy. of the Tp.
N.2°25'W., bet. secs. 32 and 33.

Over rolling mountainous land, through scattered undergrowth;
asc. 45 ft. over SW. slope.

- 6.60 Spur, slopes W. Desc. 140 ft. over N. slope.
13.40 Gully, course N.20°W., continue descent 25 ft.
16.50 Spur, slopes N.10°W. Desc. 120 ft. along NE. slope.
17.50 Telephone line, bears irregularly NE. and W. Change of slope
to N.
19.40 Draw, course W., Asc. 15 ft. over S. slope.
20.95 Old road, bears N.70°E. and S.80°W. Continue ascent 140 ft.
22.70 Spur, slopes W., change of slope to SW.
23.90 Ravine, course W.
30.00 Spur, slopes W. Desc. 140 ft. over N. slope.
36.00 Draw, course W., Asc. 130 ft. over SW. slope.
40.22 The $\frac{1}{4}$ sec. cor. of secs. 32 and 33, marked by an iron post,
2 ins. diam., 1 ft. above ground, firmly set in concrete
base, 6 ins. diam., Additionally mark brass cap to read

COUNTY SURVEYORS

T5N

R14W $\frac{1}{4}$

S 32 S 33

$\frac{1}{4}$ SEC COR

US BLM 1947

MONUMENT

Raise a mound of stone, 3 ft. base, 1 ft. high, around iron post.

N.2°25'W., beginning new measurement.

- Asc. 15 ft. along W. slope.
4.00 Shoulder of short spur, from E., breaks sharply to the W.
Desc. 130 ft. over N. slope.
8.10 Gully, course W.
8.80 Ravine, course SW. Asc. 80 ft.
11.11 Intersect an iron pipe, 2 ins. diam., driven firmly in the
ground, 8 ins. above a stone mound, 3 ft. base, 1 ft. high.
Over gently rolling land.

Dependent Resurvey of Part of the Subdivision, T.5 N., R.14 W.

- Chains
- 12.63 Intersect an iron pipe, 2 ins. diam., 1 ft. above ground, and in a mound of stone, 2 ft. base, 1 ft. high, bearing a copper tag marked LS 1768.
- 13.70 Enter small field, bearing E. and W.
- 17.50 Shallow ravine, 15 ft. deep, course SW.
- 19.45 Graded road, bears irregularly E. and W., leave field.
- 20.07 Intersect an iron pipe, 2 ins. diam., 6 ins. above ground, firmly set, bearing copper tag marked LS 1768.
- 22.00 Desc. 50 ft. over NW. slope.
- 23.34 Intersect line 2-3, of Opal No.4 mining claim, Mineral Survey No. 5336A, N.77°25'W., 10.10 chs. dist., from Cor. No. 2, which is marked by a pine post, 4 ins. square, 3½ ft. high, firmly supported in a mound of stone, mkd. 0-2 5336A on W face. From point of intersection, cor. No. 3, Opal No.4 lode, bears N.77°25'W., 12.63 chs. dist., marked by a pine post, 4 ins. square, 3 ft. long, partially supported in a mound of stone, marked, 0-3 5336A on E. face.
- Continue, over patented land.
- 26.20 Ravine, course SW. Asc. rocky SE. slope 165 ft.
- 37.75 Gully, 30 ft. deep, course SE.
- 40.18 The cor. of secs. 28, 29, 32 and 33, marked by an iron post, 2 ins. diam., firmly set in concrete base, and supported in a mound of stone, 5 ft. base, 3 ft. high. Additionally make brass cap to read

COUNTY SURVEYORS

T5N
 S 29 S 28
 R14W S 32 S 33
 US BLM 1947
 1925
 MONUMENT

Alongside this monument is original juniper stake, 3 ins. sq., 4 ft. long, quite badly weathered and illegibly marked.

Land, rolling mountains.

Soil, rocky, 3 rd rate.

Scattered cedar and scrub oak, creosote brush, cacti and sage.

From the cor. of secs. 5, 6, 31 and 32, on the S. bdy. of the Tp. N.1°10'E., bet. secs. 31 and 32.

Over mountainous land, through scattered undergrowth; asc. 35 ft. over S. slope.

- 0.90 Spur, slopes W. Desc. 65 ft.
- 2.60 Gulch, course W., asc. 100 ft.
- 6.70 Spur, slopes W. Desc. 135 ft.

Dependent Resurvey of Part of the Subdivisions, T.5 N., R.14 W.

Chains

- 25.80 Shallow draw, course SW. Asc. 55 ft.
- 28.82 Wire fencing, bears N.30°E. and S.30°W.
- 32.00 Flat spur, extends SW. Desc. 140 ft. over N. slope.
- 32.55 Graded road, bears N.70°E. and W.
- 36.50 Gully, course NW. Along W. slope.
- 38.06 The cor. of secs. 29, 30, 31 and 32, marked by an iron post, 2 ins. diam., firmly set in concrete base, 6 ins. diam., and in a mound of stone, 5 ft. base, 2 ft. high, to top. Additionally mark brass cap to read

COUNTY SURVEYOR
T5N
SEC
S 30 S 29
R14W S 31 S 32
COR
US BLM 1947
MONUMENT

Land, rolling mountains.
Soil, rocky, 3d. rate.
Scattered cedar and scrub oak; creosote brush, sage and cacti.

N.89°13'E., bet. secs. 29 and 32.

Over mountainous land, through scattered undergrowth.

Asc. 160 ft. over W. slope.

- 4.70 Top of ascent; over rolling land, bearing NE. and SW.
- 12.00 Ravine, course SW. Asc. 85 ft. over gradual NW. slope.
- 22.00 Drain, course N.20°W. Change of slope to West.
- 23.60 Point of small spur, sloping N.
- 26.00 Drain, course N.
- 29.60 Low hill, on divide, bearing NE. and SW. Desc. 35 ft.
- 31.60 Road, bears N. and S.
- 32.50 Head of swale, draining S., Asc. 20 ft.
- 38.72 The $\frac{1}{2}$ sec. cor. of secs. 29 and 32, marked by an iron post, 2 ins. diam., 12 ins. above ground, firmly set in concrete base, 8 ins. diam., and supported in a mound of stone, 3 ft. base, 1 ft. high. Additionally mark brass cap to read

COUNTY SURVEYORS
T5N
SEC 29
R14W Sec 32
 $\frac{1}{2}$ COR
US BLM 1947
MONUMENT

Raise a mound of stone, 2 ft. base, $1\frac{1}{2}$ ft. high, N. of cor.

Dependent Resurvey of Part of the Subdivision, T.5 N., R.14 W.

Chains

- N.86°05'E., beginning new measurement.
Asc. 80 ft. over a decreasing W. slope.
- 10.00 Flat spur, from N.20°E., rises slightly to the South.
- 12.00 Desc. 35 ft. over NE. slope.
- 13.83 Intersect line 3-4 of Bellflower Mine, Mineral Survey No. 5336A, S.77°25'E., 5.885 chs. dist. from Cor. No. #, which is marked by a granite stone, firmly set, 10 x 6 x 6 ins. above ground, marked + on top, BP3 on N., 5336A on E. face.
From point of intersection Cor. No. 4 bears S.77°25'E., 16.815 chs. dist., marked by a lava stone, firmly set, 10x8x8 ins. above ground, mkd. with + on top, BP4; BP4 5336A on W., 4 5336A on N., 5336 on E. face.
From this corner, Cor. No. 3, Opal No. 4 lode, bears S.9°06'W., 8.66 chs. distant.
- Continue, in patented land.
- Desc. 150 ft. over barren slope, changing from NW. to E., along S. side of short gully, draining E.
- 22.00 Canyon, course S., partially choked by early mining operations.
From this point Cor. No. 4, Bellflower Mill Site, Mineral Survey No. 5336B, bears S.69°15'W., 4.20 chs. dist., marked by a pine post, 4 ins. square, 3 ft. above ground, firmly supported in a mound of stone; marked BMS-4 5336B.
- Asc. 290 ft. over W. slope.
- 27.00 Change of slope to SW; continue ascent.
- 36.25 Rocky spur, slopes S., from low peak about 4 chs. North.
Desc. 75 ft. over SW. slope.
- 40.50 The cor. of secs. 28, 29, 32 and 33.

Land, rolling mountains,
Soil, rocky, 3rd rate.
Scattered cedar and scrub oak in western portion, barren in E.

Subdivision of Section 32.

- From the $\frac{1}{4}$ sec. cor. of secs. 5 and 32.
N.2°26'W., on the N. and S. center line of Sec. 32.
Over broken, mountainous land, through scattered underbrowth.
Asc. 23 ft. over S. slope.
- 0.95 Point of rocky spur, sloping W. Desc. 40 ft.
- 6.25 Road, bears NE and SW.
- 6.60 Wash, 30 lks. wide, in Tick Canyon, course SW. Asc. 200 ft. over S. slope, along spur from North.

Subdivision of Section 32, T.5 N., R.14 W.

Chains

- 18.00 Top of broken escarpment, 10 to 25 ft. high, extending irregularly N., continue ascent 25 ft. along bluff.
- 18.89 Establish a witness monument for center S. 1/16 sec. cor.
Set an iron post, 3 ft. long, 1 in. diam., 34 ins. in the ground, with granite rock, 7 x 6 x 4 ins., marked + deposited alongside, with brass cap mkd.
- W C
C S 32
S 1/16 C
1947
- Raise a mound of stone, 3 ft. base, 2 ft. high, W. of cor.
- 19.62 Point for center S. 1/16 sec. cor., falls upon SE. face of sloping bluff, 20 ft. high.
- 20.30 Top of bluff, facing E.
- 22.20 Escarpment, from South, extends irregularly E.
- 22.90 Spur, breaks to the East. Desc. 125 ft. over N. slope.
- 27.10 Ravine, course SE. Asc. 150 ft. over S. slope.
- 31.00 Top of bluff, 40 ft. high, extending to NE. Asc. 25 ft. over SE. slope.
- 33.50 Flat spur, breaks sharply to SE. Desc. 60 ft.
- 37.60 Broken escarpment bears NW. and SE.
- 39.24 Point for center 1/4 sec. cor., at intersection with the E. and W. center line.
Set an iron post, 3 ft. long, 1 in. diam., 32 ins. in the ground, with brass cap mkd.
- C 1/4 S 32
1947
- Raise a mound of stone, 2 ft. base, 1 1/2 ft. high. W. of cor. N.2°26'W., beginning new measurement.
Desc. 55 ft. over NE. slope.
- 1.40 Gully, course E. Asc. 55 ft. over S. slope.
- 2.60 Top of rimrock, 10 ft. high, bearing E.&W. Continue ascent 30 ft.
- 4.60 Short spur, slopes SE. Desc. 40 ft. along broken E. slope.
- 9.60 Draw, course S.30°E. Asc. 10 ft. over S. slope.
- 10.65 Grades road, bears NW. and SE. Continue ascent 70 ft. SW. slope.
- 20.30 Spur, slopes S.30°E. Desc. 80 ft. over NE. slope.

Subdivision of Section 32, T.5 N., R.14 W.

Chains

- 22.80 Short gully, course E.
- 24.20 Ravine, course S.60°E., Asc. 75 ft.
- 26.40 Short spur, slopes SE. Desc. 75 ft. over N^h. slope.
- 30.40 Old road, bears NW. and SE.
- 31.85 Gully, course SE. Asc. 30 ft. over SE. slope.
- 34.50 Ravine, near head, course S.20°E. Asc. 75 ft. over SW slope.
- 38.02 The $\frac{1}{2}$ sec. cor., of Secs. 29 and 32.

From the $\frac{1}{2}$ sec. cor. of secs. 31 and 32

N.89°05'E., on the E. and W. center line of Sec. 32.

Over mountainous land, through scattered undergrowth, Desc. 110 ft. over SE. slope.

- 5.70 Head of ravine, course S., Asc. 90 ft. over SW. slope.
- 11.50 Road, in poor condition, extends S., from NE. Top of ascent, flat ridge extends to N. and S.; rises slightly to low peak in the South.
- 20.61 Point for center W. $\frac{1}{16}$ sec. cor.
 Set an iron post, 3 ft. long, 1 in. diam., $\frac{3}{4}$ ins. in the ground with brass cap mkd.

$$\begin{array}{c} W \frac{1}{16} \\ \hline S \frac{3}{32} \\ 1947 \end{array}$$

 Raise a mound of stone, 3 ft. base, 2 ft. high, N. of cor.
 Desc. 145 ft. over broken E. slope.
- 24.40 Gully, course SE.
- 29.40 Gully, Course SE.
- 31.00 Small spur, slopes SE. Continue descent 100 ft.
- 38.00 Spur, slopes SE.; broken escarpment bears NW. and SE.
- 41.22 The center $\frac{1}{2}$ sec. cor., at intersection with the N. and S. center line.
 N.89°05'E., beginning new measurement.
 Desc. 130 ft. over NE. slope.
- 5.85 Ravine, at confluence with gulch from NW., course S.20°E.
 Asc. 120 ft. over SW. slope.
- 10.45 Spur, slopes S. Desc. 120 ft.

Subdivision of Section 32, T.5 N., R.14 W.

Chains

-
- 14.80 Road, bears N. and S.
 - 15.80 Wash, 20 lks. wide, in Tick Canyon, course S. Asc. 150 ft. over SW. slope.
 - 23.70 Spur, slopes S. Desc. 110 ft.
 - 30.30 Ravine, course SW. Asc. 105 ft. over W. slope.
 - 36.00 Spur, slopes S.75°W. Continue ascent 40 ft.
 - 38.90 Ravine, course SW. Asc. 50 ft. over W. slope.
 - 40.48 The $\frac{1}{4}$ sec. cor. of secs. 32 and 33.
-

From point for W. 1/16 sec. cor., of secs. 5 and 32, N.42°W., 44 $\frac{1}{2}$ lks. dist., from witness cor. monument.

N.0°38'W., on the N. and S. center line of SW $\frac{1}{4}$ sec. 32.

Across wash, 10 lks. wide, 4 ft. deep, course NE. Asc. 175 ft. over precipitous SE. slope.

- 7.00 Spur, slopes E. Asc. 20 ft. over broken E. slope.
- 19.35 Point for SW. 1/16 sec. cor., at intersection with the E. and W. center line of SW $\frac{1}{4}$ sec. 32.

set an iron post, 3 ft. long, 1 in. diam., 3/4 ins. in the ground, with brass cap mkd.

SW $\frac{1}{16}$ S 32
1947

Bury a granite stone, 6x6x1/4 ins., marked + alongside iron post.

Raise a mound of stone, 3 ft. base, 2 ft. high, W. of cor.

Asc. 50 ft. over SE. slope.

- 24.00 Small spur, slopes S.60°E. Over broken E. slope.
- 25.80 Head of gully course NE.
- 33.00 Head of gully, course S.80°E.
- 37.00 Head of gully, course E.
- 38.69 The center W. 1/16 sec. cor.,

From the S. 1/16 sec. cor., of secs. 31 and 32.

N.89°49'E., on the E. and W. center line of the SW $\frac{1}{4}$ sec. 32.

Desc. 50 ft. over broken N. slope.

- 5.90 Gully, course N.30°W. Asc. 250 ft. over SW. slope.

5.90 →

Subdivision of Section 32, T.5 N., R.14 W.

Chains

- 16.80 Ridge, bears N.20°E. and S.20°W. A sheet metal cabin, and end of stub road from the North, bears N.13°E., 4 chs. dist.
Desc. 110 ft. over E. slope.
- 21.21 The SW.1/16 sec. cor., at intersection with the N. and S. center line.
Continue descent 170 ft. over SE. slope.
- 26.35 Ravine, course SE. Along S. slope.
- 32.10 Spur, slopes SE. Desc. 105 ft. over E. slope.
- 36.00- Draw, course S. Asc. 100 ft. over W. slope.
- 41.50 Spur, slopes S.20°E.
- 42.00 Top of broken escarpment. Desc. 15 ft. over precipitous bluff slope.
- 42.40 Point for center S.1/16 sec. cor., N.2°26'W., 73 lks. dist. from witness corner monument.
-

General Description.

Section 32, lying in a maximum elevation of 2500 feet, is of rolling mountainous character, supporting a scattered growth of vegetation. The soil shallow, rocky and of poor texture; drainage is southerly through Tick Canyon. A graded road, well maintained, leads easterly through the north half of the section, from Highway No. 6, in Mint Canyon; a lateral road, in poor condition, though passable, follows Tick Canyon to a junction with the Soledad Canyon highway, about three miles distant.

The southwest quarter is rough and broken, with a maximum variant in elevation of 500 feet. A stub roadway leads south, along the dividing ridge, nearly to the center of this area.

Patented mineral locations are notes in the extreme north-east portion of the section.

UNITED STATES
DEPARTMENT OF THE INTERIOR
Bureau of Land Management

FIELD ASSISTANTS

NAME	CAPACITY
Riley C. Hibbel	Engineering Aide.
C. Albert White	Field Assistant.
John Hamushak	Field Assistant.
John B. Crook	Field Assistant.
Harold R. Mullar	Field Assistant.