

FIELD NOTES OF THE FINAL SURVEY
OF THE

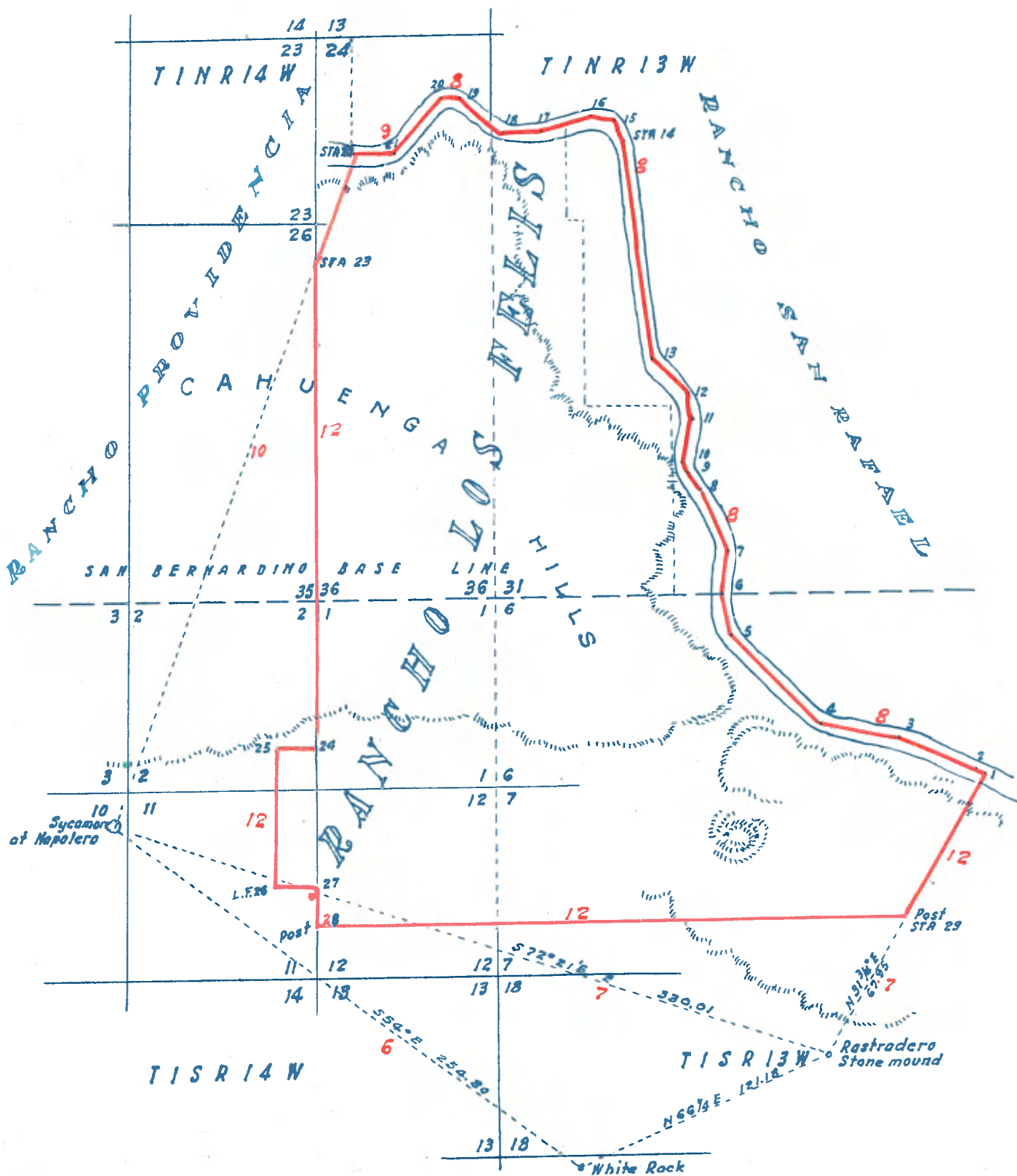
RANCHO LOS FELIS

Surveyed by George Hanson

April 1866

Vol. M-42
pages 5-12

Copied from photostats
furnished by the Bureau
of Land Management -
Cadastral Engr. Office
Sacramento, Calif.





IN REPLY REFER TO:

UNITED STATES
DEPARTMENT OF THE INTERIOR
BUREAU OF LAND MANAGEMENT
STATE OFFICE
California Fruit Building - Room 801
Fourth and J Streets
Sacramento 14, California

MAR 28 1958

I hereby certify that the annexed copy of field notes
(consisting of 5 photostats) ~~and photostats (consisting~~
~~of 5 photostats)~~ is a true and literal exemplification from
the record which is in my custody in this office.

In testimony whereof I have hereunto
subscribed my name and caused the seal
of this office to be affixed, at the
city of Sacramento on the day and year
above written.

R R Best
State Supervisor

Field Notes of the final survey of the Rancho Los Felis,
situated in ^{the} County of Los Angeles, state of California.

Confirmed to Maria Ygnacia

Berdugo executed by George Hansen
U.S. deputy Surveyor, in pursuance
of instructions issued by L. Upson
U.S. Surveyor-General for Cali-
fornia of date April 14 1866.

Manuel Dominguez, in the capacity
of justice of the Peace and of
the first instance, gave on the
twentyninth of March 1843,
juridicial possession of this
Rancho to Dona Maria Ygnacia
Berdugo.

Antonia F. Coronel and Mamuel
Coronel, declare, that they were
both present, when the said
juridicial possession was given.
On my request the aforesaid three
persons go with me to the
Rancho " Los Felis", and show
the land marks and points described
in the document of Juridical
possession namely;

The point of beginning at the
bank of the River Los Angeles
(punto norte) Marked in the
accompanying map as station 1
where I set a green willow
post 8 ins. diam.

Marked L.F.1. at the waters edge

The Rastradero (punta oriente)

N-42
5 sheets
L.A. County
5-12

Marked by a mound of rocks.

A sycamore tree in a Cactus field called Nepalere (punto Sur)

Also an oak tree near the Lime Kilm (punto poniente).

Antonio F. Coronel and Manuel Coronel in pointing out these objects declare them to be the identical Land marks of this Rancho.

Manuel Dominguez, says that he cannot recollect the particular points and Land marks, but that he knows well that the Rancho " Los Felis," of which he gave Juridical possession is situated on the SW. side of the river Los Angeles where the Felis people always had their houses and improvements.

I proceed to ascertain the position of the said Landmarks, commencing to measure from the aforesaid sycamore at the Nepalere which is 170.00 chains west and 14.46 chains south of corner 1 and 6.12 and 7 of township 1 south range 13 and 14 west of San bernardine Initials
Var. 14° 15' east.

S. 54° E. 254.80

To a white sand stone 18 by 36 ins. 3 feet above ground on a hill 150 feet high.

Manuel and Antonio F. Coronel

N. 664 R. 121.18

100.97 317.05

9503068

$$H = 17^{\circ} 39'$$

Course; $100.97 \pm R \sin H$.

lg. course \approx lg 100.97 = 2004193

$$\lg. \sin. H = 9,482732$$

2,522,462

Course = 333-01 'chains'.

Therefore the line from the
Nepalero to the Rostradero is
S. 72° 21' east 333.01 chains
from the Rostradero I run.

To the willow post station 1
at the right bank of the river,
Los Angeles the general course

N-42 5-12
5 sheets
L.A. County

		of the river, is here S. 62½ E.
		and its width 8.00 chains
		from station 1 I run.
N. 31 3/4 E.	4.00	To the center of the river and
		thence I meander the mid
		channel of the same.
N. 65½ W.	45.00	To station 3. Thence
N. 79 3/4 W.	35.00	To station 4, Thence.
N. 46° W.	55.00	To station 5. Thence.
N. 16½ W.	16.36	To station 6. a point in the Base
		line 20.50 chains east of mound
		in corner of sections 31 and 32, 6
		and 5 in township 1 north and
		1 south range 13 west of San
		Bernardino Initials. Thence,
N. 13 E.	18.00	To station 7 Thence.
N. 24½ W.	29.00	To station 8 Thence.
N. 46° W.	10.00	To station 9, Thence.
N. 21° W.	5.00	To station 10, Thence.
N. 16½ W.	20.00	To station 11, Thence.
N. 12° W.	11.00	To station, 12, Thence.
N. 51½ W.	22.00	To station, 13 Thence.
N. 6° W.	95.00	To station 14 Thence.
N. 40° W.	9.00	To station 15. Thence.
N. 77° W.	10.00	To station 16. Thence.
S. 75° W.	25.00	To station 17. Thence.
West	16.00	To station 18. Thence.
N. 48° W.	25.00	To station 19, Thence.
N. 88° W.	9.00	To station 20, Thence.
S. 42° W.	33.00	To station 21, (Thence.)

An oak tree on a steep bluff
on the south side of the river
Los Angeles, The river here

N-42
5 sheets
L.A. County
5-12

Makes a short turn so that the
general course is north 23° east
thence leaving the river and
running along the said steep
bluff .

N. 85 1/4° W. 16.39

To a dry oak 2 feet diam.
station 22, which was pointed
out as above mentioned, to be
the land mark near the Lime
Kila, and which is 47.94 chains
south and 17.70 chains east of
corner to sections 14 and 13
and 23 and 24 in township
1 north range 4 west of San
Bernardino Initials.
From this oak tree the western
boundary line runs direct to the
sycamore tree at the Jopalero
over rough rugged hills, covered
with dense chaparral which I
find impossible to measure with
a satisfactory degree of accu-
racy I therefore calculate the
said line in the following
manner, according to the Tablings
of the lines above described
the sycamore at the Nopalero
is 286.27 chains south and
108.25 chains west of the oak
tree at station 22 Therefore:
 $286.27: 108.25 = R. \text{ tgs. } X.$
 $1g. \text{ tgs. } X. = 1g. 108.25 = 2,034427$
 $1g. 286.27 = 2,456776$
 $9,577651$
 $X = 20^\circ, 42' \text{ and}$

Course: $108.25^\circ \text{R. Sin. X}$

lg Course = lg $108.25 = 2,034427$

-lg Sin. $20^\circ 42' \text{E.}$ $\frac{209,548359}{2,486068}$

Course = 306.24 chains.

Therefore the line from the oak at station 22 to the sycamore at the Nopalero is $S. 20^\circ 42'$ west 306.24 chains.

The Area included within the above lines is $833.77.4853$ Acres

The quantity
(confirmed is 6658.0240 "
Therefore to
(be cut off 1679.46613 Acres

Apart of the above quantity is included in the limits of the Los Angeles Pueblo lands.

In the Plat furnished from your office of the said Pueblo lands its south boundary is 79.00 chains south of the township line between townships 1 and 2 south.

The extension of said Pueblo lands from south to north is 2 leagues or 421.36 chains

therefore the northern boundary will be 22.36 chains north of the section line between sections 7 and 18 in township 1 south Range 13 west.

Therefore the triangle lying south of the northern City boundary and its prolongation contains 627.48 Acres.

Extending the line of the Northern boundary of the city to the section line 1 mile west of range line between ranges 13 and 14 west and running thence north along said section line to where it intersects the line running from the oak tree near the Lime Mill to the sycamore at the Nopalero, a triangle at the western end of this Rancho.

Containing 1206.58 Acres, is cut off and a triangle in section 12 township 1 south range 14 west containing 33.13 Acres is added leaving a quantity of 6537.57 acres in the Rancho to which 121 acres must be added to complete the quantity of $1\frac{1}{2}$ leagues of land.

For this additional quantity I include the east half of the NE Sec. 11, and quarter of the SE. quarter of section 2 township 1 south range 14 west.

In order to establish the western and southern boundary of this Rancho.

I run from the oak tree at station 22 in the direction to the sycamore at the Nopaleros

S.20° 5' W. 51.14

Intersect section line 15.87 chains south of corner to sections

		23, 24, 25, 26 of township 1 north range 14 west set post station 23.
South	203.88	Thence along said section line To a point 20.00 chains north of corner to sections 12, 11, 12 of township 1 south range 14 west.
West	20.00	Set a post marked L.F. 24 Thence Set a post marked L.F. 25 Thence
South	60.00	Set a post marked L.F. 26 Thence
East	20.00	Set a post marked L.F. 27 Thence corner between sections 11 and 12 in township 1 south range 14 west station 27. Thence along section line.
South	17.64	To the prolonged line of the northern boundary of the Pueblo land of Los Angeles. Set a post marked L.F. 28 Thence
East	262.26	Intersect the line from the Rastradero to station 1. at the bank of the river. Set post marked station . 29. Thence along the said line
N. 31 3/4 E.	67.05	To willow post at station. 1.

GENERAL DESCRIPTION.

The canneuga hills run along the south and southeast side of the river Los Angeles, leaving between them the river about 700 acres of first class irrigable land in irregular pieces .

They extend from the oak at station 22 to within 40.00 chains of the sycamore at the Nopalero, the southern base of them winds thence in an easterly direction towards a gap called " Puerta Suela" between station 4 and 5 of the meanders of the river.

From the Base a beautiful valley of first class soil slopes gently towards the south.

The said hills are rough and covered with dense chaparral at the western boundary of this Rancho and change gradually into rolling hills with excellent pasture as they approach the said gap. South of this gap the Pelis hills rise gradually and extend from there over the southeast part of this Rancho, and are covered with good pasture,

GEORGE HANSEN.

U.S. Deputy Surveyor.

N-42
5 Sheets
L.A. County
5-12