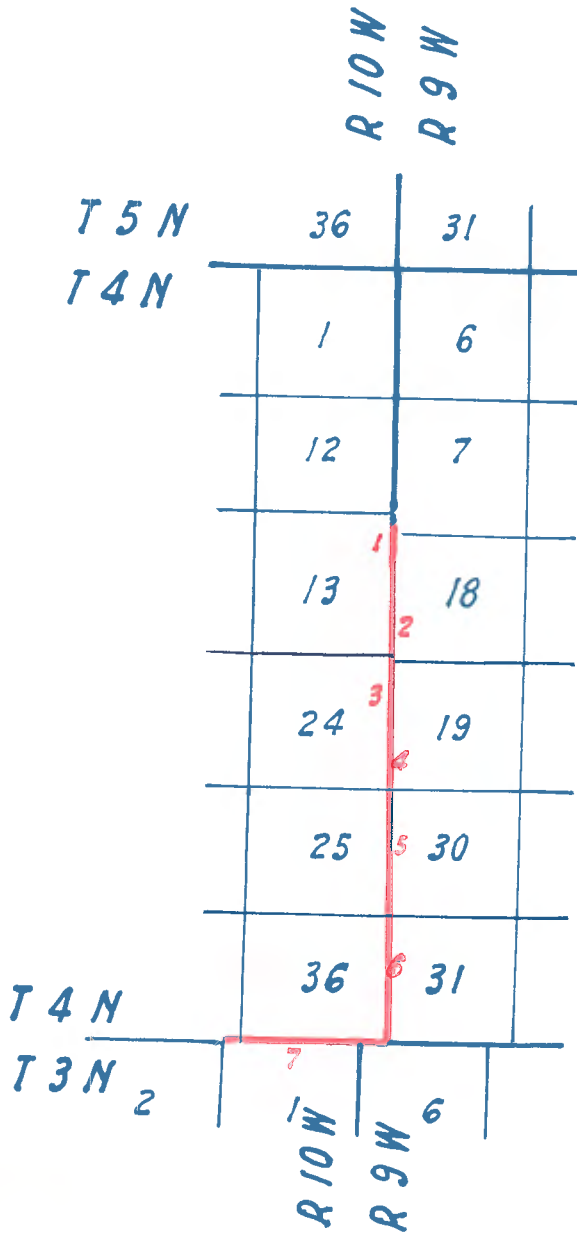


F.D. 9454

FIELD NOTES
OF
RANGE LINE BETWEEN
R 9 W & R 10 W
IN
TWP. 4 N O.

Copied from photostats received
from the United States Bureau
of Land Management at Sacra-
mento Calif.



Retracement of Portion of E.Bdy. of T. 4 N., R. 10 W.,

Chains.

Survey commenced November 26, 1912, and executed with Young and Sons light mountain transits Nos. 8398 and 8149, with solar attachments.

For test of solar attachment as shown by observations on Polaris see Book D.

From the cor. of secs. 12 and 13 on the E.bdy. of the Tp. which is an oak post 4 ins. square 12 ins. above ground firmly set, marked and witnessed as described by the Surveyor General. I renew the pits and enlarge the mound to $3\frac{1}{2}$ ft. base 2 ft. high.

Thence I run

South on a random line on the E.bdy. of sec. 13.

3.00 The closing cor. of secs. 7 and 18 of R. 9 W.
51.10 Fall 10 lks. E. of old $\frac{1}{4}$ sec. cor. which is a pine post

4 ins square 12 ins above ground firmly set marked and witnessed as described by the Surveyor General.

I destroy the marks on cor. referring to sec. 13. This cor. now becomes the cor. of sec. 18 only of R. 9 W.

91.29 Fall 4 lks. E. of cor. of secs. 13, 18, 19 and 24, which is a pine post 3 ins. square firmly set, marked and witnessed as described by the Surveyor General. I destroy the marks on the cor. and bearing tree referring to secs. 13 and 24. The cor. therefore becomes the cor. of secs. 18 and 19 only of R. 9 W.

Thence I run N. $0^{\circ}5'W$. on a true line along the E.bdy. of sec. 13.

Ascend gradually through dense brush and scattering pine, oak and pinon timber.

1.50 Top of low spur bears NW. and SE. Descend.
9.50 Ravine 20 lks. wide course NW. Ascend
13.50 Top of low spur bears NW. and SE. Descend.
29.20 Ravine 40 lks. wide course W. Ascend.
40.19 The $\frac{1}{4}$ sec. cor. of sec. 18 of R. 9 W.

November 26. At this $\frac{1}{4}$ sec. cor. I set off $20^{\circ}59'S$. on the decl. arc. and at 11h 47m. l.m.t., observe the sun on the meridian; the resulting lat. is $34^{\circ}26'$

Quoted - 27 to 32
(11 sheets)
Burnham/Warner 1912
Los Angeles County
Engineer

Retradement of portion of E.bdy.of T'4 N'R.10 W.

Chains	Thence I run
	N. 0° 7' E. on a true line along the E.bdy. of sec. 13
1.50	Ravine 10 lks. wide, course SW.
7.10	Top of low ridge bears E. and W. Descend.
8.91	Ravine 30 lks. wide course W. Ascend abruptly.
11.10	Set temp. $\frac{1}{2}$ sec. cor. of sec. 13.
38.01	Top of high spur bears SE. and NW. Thence along E. slope of Mt.
48.10	The clos. cor. of secs. 7 and 18 of R. 9 W. which is an oak post 4 ins. sq. 18 ins. above ground, firmly set marked and witness- ed as described by the Surveyor General.
50.31	Top of high spur bears E. and W. Descend.
51.10	The cor. of secs. 12 and 13.
	Land broken and mountainous.
	South 78.20 chains drains NW.
	North 13.09 chains; land drains E.
	Soil rocky and gravelly ; 3rd and 4th rates.
	Brush dense Oak, Manzanita pine and pinon
	Timber scattering pine, Oak and pinon.

November 26, 1912.

November 30, at 8h 30m a.m. l.m.t., I set off 34° 26' on the lat. arc 21° 38' S. on the decl arc and determine a meridian with the solar at the cor. of secs. 13, 18, 19 and 24.

Thence I retrace

South on a random line bet. secs. 19 & 24

40.00	Fall 5 lks. E of old $\frac{1}{2}$ sec. cor. which is a Juniper post 4 ins square 12 ins. above ground firmly set, marked and witnessed as described by the Surveyor General I renew the pits and enlarge the mound of earth to 3 $\frac{1}{2}$ ft. base 1 $\frac{1}{2}$ ft. high.
71.30	Fall 10 lks. E. of witness cor. of secs. 19, 24, 25 and 30, which is a pine post 4 ins square 12 ins. in a large mound of rocks marked and witnessed as de- scribed by the Surveyor General
80.20	Fall 12 lks. E. of X marked on a rock from which A Pine 6 ins diam. bears S. 15° W. 75 lks dist marked

Retracement of portion of E. Boundary of T. 4 N. T. 10 W. S. B. M.

Chains

T 4 N R 10 W S 25 B T

This is the true point for the cor. of secs. 19, 24, 25 and 30. The true point falls on a steep bank of a dry wash; no suitable place for a monument.

From the true point for the cor. of secs. 19, 24, 25 and 30 I run

North $0^{\circ} 8'$ E. on a true line bet. secs. 19 and 24.

Ascend over limestone cliffs through scattering scrub Oak and Pinon Brush Oak and Pine timber.

8.90 The witness cor. of secs. 19, 24, 25 & 30

Top of spur bears NE. and SW. Descend along NE. slope.

November 30; at this witness cor. I set off $21^{\circ} 40'$ S. on the decl arc and at 11h 49m l.m.t., observe the sun on the meridian; the resulting lat. is $34^{\circ} 25'$

22.50 Ravine 40 lks. wide, course N. 35° W. Ascend along E. bank of ravine.

38.75 Top of ascent bears NW. and SE. Thence descend gradually over mesa.

40.20 The $\frac{1}{2}$ sec. cor.

Thence I run

N. $0^{\circ} 4'$ E. on a true line bet. secs. 19 and 24.

6.20 Ravine 40 lks. wide from SE. Course NW. Thence along E. bank of ravine

23.72 Top, of low spur bears N. 20° W. and S. 20° E. Descend.

35.42 Ravine 30 lks. wide course NW. Ascend

40.00 The cor. of secs. 13, 18, 19 and 24.

Land mountainous and broken; drains NW.

Soil rocky and gravelly : 4th rate.

Scattering Oak, Pine and Manzanita Brush

Timber, Oak, Pine and Pinon.

November 30, 1912.

448:7 - 27 to 32
(1 sheets)
Burnham/Varner 1912
Los Angeles County
Engineer

Retracement of Portion of E.Bdy.of T. 4 N., R. 10 W., S.B.M.

Chains

December 2; At 8h 30m a.m.l.m.t., I set off $34^{\circ} 25'$ on the lat. arc $21^{\circ} 58'S.$ on the decl. arc. and determine a meridian with the solar at the true point for the cor. of secs. 19, 24, 25 and 30.

Thence I retrace

South on a random line bet. secs. 25 and 30

39.92 Fall 5 lks. W. of $\frac{1}{4}$ sec. cor. which is an oak post 4 ins. square 12 ins above ground firmly set, marked and witnessed as described by the Surveyor General.

85.77 Fall 10 lks. W. of the witness cor. of secs. 25, 30, 31 and 38, which is a pine post 4 ins. square in a mound of rocks firmly set and marked and witnessed as described by the Surveyor General.

This witness cor. is on top of a rocky spur which bears E and W.

Thence I run

$N. 0^{\circ} 4' W.$ on a true line bet. secs. 31 and 38.

Descend over steep N. slope covered with slide rock

5.98 The true point for cor. of secs. 25, 30, 31 and 38.

I continue $N. 0^{\circ} 4' W.$ on a true line bet. secs. 25 and 30.

Continue descent over steep E. slope through oak, pine and manzanita brush, pinon oak and pine timber.

13.99 Top of spur bears NE. and SW. Descend abruptly over steep N. slope

25.49 Ravine 20 lks. wide course N. $30^{\circ} E.$ Ascend.

35.49 Top of spur bears NE. and SW. Descend.

42.49 Ravine 20 lks. wide, course NE. Ascend.

45.25 The $\frac{1}{4}$ sec. cor. bet. secs. 25 and 30.

49.80 Ridge bears NE. and SW. Descend abruptly.

61.60 Ravine 40 lks. wide; course N. Thence along ravine, over large boulders.

79.85 Leave ravine 40 lks. wide, course NW. Ascend.

81.60 Top of spur bears NE. and SW. Descend over large sand stone boulders.

85.77 The true point for cor. of secs. 19, 24, 25 and 30, from which the witness cor. bears $N. 0^{\circ} 6' E.$ 8.90 chs.

Retracement of portion of E.bdy.of T.4 N.,R.10 W.,S.B.M.

Chains	Land mountainous;drains N. Soil rocky and gravelly;4th rate. Scattering oak,pine,and pinon brush. Timber,oak,pine and pinon. Dec.2.- At this point I set off $21^{\circ}58'S.$ on the decl. arc; and at 11h 49m..l.m.t.,observe the sun on the meridian. The resulting lat.is $34^{\circ}24'$ Dec. 2,1912.

	Dec.3.- At 9h a.m.,l.m.t.,I set off $34^{\circ}24'$ on the lat. arc; $22^{\circ}06'S.$ on the decl.arc; and determine a mer- idian with the solar at the witness cor.of secs. 25, 30,31 and 36,which is - 5.98 chs. S. $04^{\circ}E.$ of the true point for cor. Thence I run South on a random line bet.secs. 31 and 36. 51.87 Fall 15 lks.W.of the witness cor. to $\frac{1}{4}$ sec.cor. which is a pine post 4 ins.square in a mound of rocks marked and witnessed as described by the Surveyor General. 73.72 Fall 12 lks.W.of the closing cor.of T. 4 N ,Rs.9 and 10 W. which is a pine post 4 ins.square 12 ins.above ground firmly set and marked and witnessed as described by the Surveyor General. Dec.3. At the closing cor.of T. 4 N.,Rs. 9 and 10 W., I set off $22^{\circ}07'S.$ on the decl.arc; and at 11h 50m ,l.m.t.,observe the sun on the meridian; the re- sulting lat.is $34^{\circ}23'$ Thence I run N. $0^{\circ}04'E.$ on a true line bet.secs. 31 and 36. Descend abruptly over steep NW. slope through scattering oak.pinon and manzanita brush. Scattering oak,pine,pinon and fir timber. 7.60 Ravine 5 lks.wide,course SW. Ascend along SE. slope 21.85 The witness $\frac{1}{4}$ sec.cor. Summit of Pleasant View Ridge bears E.and W. Descend

448:7 - 27 to 32
 (11 sheets)
 Burnham/Warner 1912
 Los Angeles County
 Engineer

Retracement of portion of E.bdy.of T.4 N.,R.10 W.,S.B.M.

Chains

abruptly over very steep N. slope covered with slide rock.

Thence I run

N.10° W.on a true line bet.secs. 31 and 36.

5.15 Ravine 20 lks.wide,course E. Ascend along steep E.slope.

18.00 The true point for $\frac{1}{4}$ sec.cor.falls on steep E.slope.

Not a suitable place for cor.

51.87 The witness cor. of secs. 25,30,31 and 36.

Land mountainous,drains SE. and N.

Soil rocky; land covered with slide rock.

Scattering oak,pine,pinon and manzanita brush.

Timber,scattering oak,pine pinon and fir.

December 3,1912.

Retracement of N.bdy.of T.3 N.,R.9 W.,S.B.M.

December 4; At 9h a.m.,l.m.t.,I set off 34° 23' on the lat.arc; 22° 14' S. on the decl.arc; and determine a meridian with the solar, at the closing cor.of T.4 N., Rs. 9 and 10 W.

The cor. of T. 3 N.,Rs. 9 and 10 W. being plainly visible I run

S.89°W. on a true line along the N.bdy. of sec.6,T. 3 N. T.9 W.

5.90 The cor. of T.3 N.,Rs. 9 and 10 W.,which is a pine post 8 ins. square in a large mound of stones marked and witnessed by the Surveyor General.

RESURVEY OF N.BDY.OF T.3 N.,R.10 W.

From the cor.of T.3 N.,Rs. 9 and 10 W., I run

S.89°51'W. on a random line along the N.bdy.of sec.1, T.3 N.,R.10 W.

40.00 After diligent search fail to find any evidence of old $\frac{1}{4}$ sec.cor.

81.70 Fall 24 lks.N.of old cor.of secs. 1,2,35 and 36,which is a pine post 4 ins.square firmly set in a mound of stone and marked as described by the Surveyor---

Retracement of Portion of E.bdy.of T.4 N.,R.10 W., S.B.M.

Chains

General.

This cor. now becomes the cor. of secs. 1 and 2, T. 3 N., R.10 W. I therefore destroy all markings on the post referring to T. 4 N.,R.10 W. and raise a mound of stone 3 ft. base 2 ft. high S.of cor.

Thence I run

N.89° 41'E. on a true line along the N.bdy.of sec.1

Descend over very steep SE.slope through scattering oak, pine, pinon and manzanita brush scattering oak pine pinon and fir timber.

- 7.60 Set a granite stone 18 x 12 x 10 ins. 12 ins. in the ground for cor. of secs. 35 and 36 of T. 4 N. marked with 1 notch on E. and 5 notches on W. edge, from which

A Bull Pine 36 in.dia.bears N. 48°20' E.90 lks.dist marked T. 4 N R 10 W S 36 B T.

A Bull Pine 18 ins.diam., bears N. 15° 20' W. 120 lks.dist.marked T 4 N R 10 W S 35 B T.

- 25.80 Ravine 15 lks.wide course SW. Ascend.

- 34.20 Top of spur bears NE. and SW. Descend.

December 4. At this point I set off 22° 16'S. on the decl arc and at 11h 50m ,l.m.t., observe the sun on the meridian; the resulting lat is 34°23'

- 40.85 Set a granite stone 18 x 18 x 12 ins.12 ins.in the ground for $\frac{1}{4}$ sec.cor. of sec' 1 of T.3 N. marked $\frac{1}{4}$ on N. face ; from which

A Bull Pine 18 ins dia bears S. 76° 15' E. 130 lks. dist. marked $\frac{1}{4}$ S.1 B.T.

A Bull Pine 28 ins.dia.bears N. 60°W. 70 lks.dist marked $\frac{1}{4}$ S.B.T.

- 47.60 Set a granite stone 14 x 9 x 8 ins .10 ins.in the ground for $\frac{1}{4}$ sec.cor. of sec.36 of T.4 N.marked $\frac{1}{4}$ on N. face from which

A Bull Pine 12 ins dia bears N. 26° 15' E. 150.lks. dist.marked $\frac{1}{4}$ S. 36 B.T.

llh:7 - 27 to 32
(11 sheets)
Burnham/Warner 1912
Los Angeles County
Engineer