

MAP
OF THE

ASSESSMENT DISTRICT
FOR THE EXTENSION OF THE
ALLEY BET. GRAND AVE. AND HOPKINS
TENTH ST. AND ELEVENTH ST.

CITY OF LOS ANGELES, CAL.

Under Ordinance 4865 (New Series)

Scale 1 inch = 30 feet

J.H. Dockweiler City Engineer May, 1898

The Red Tint shows the land to be taken.

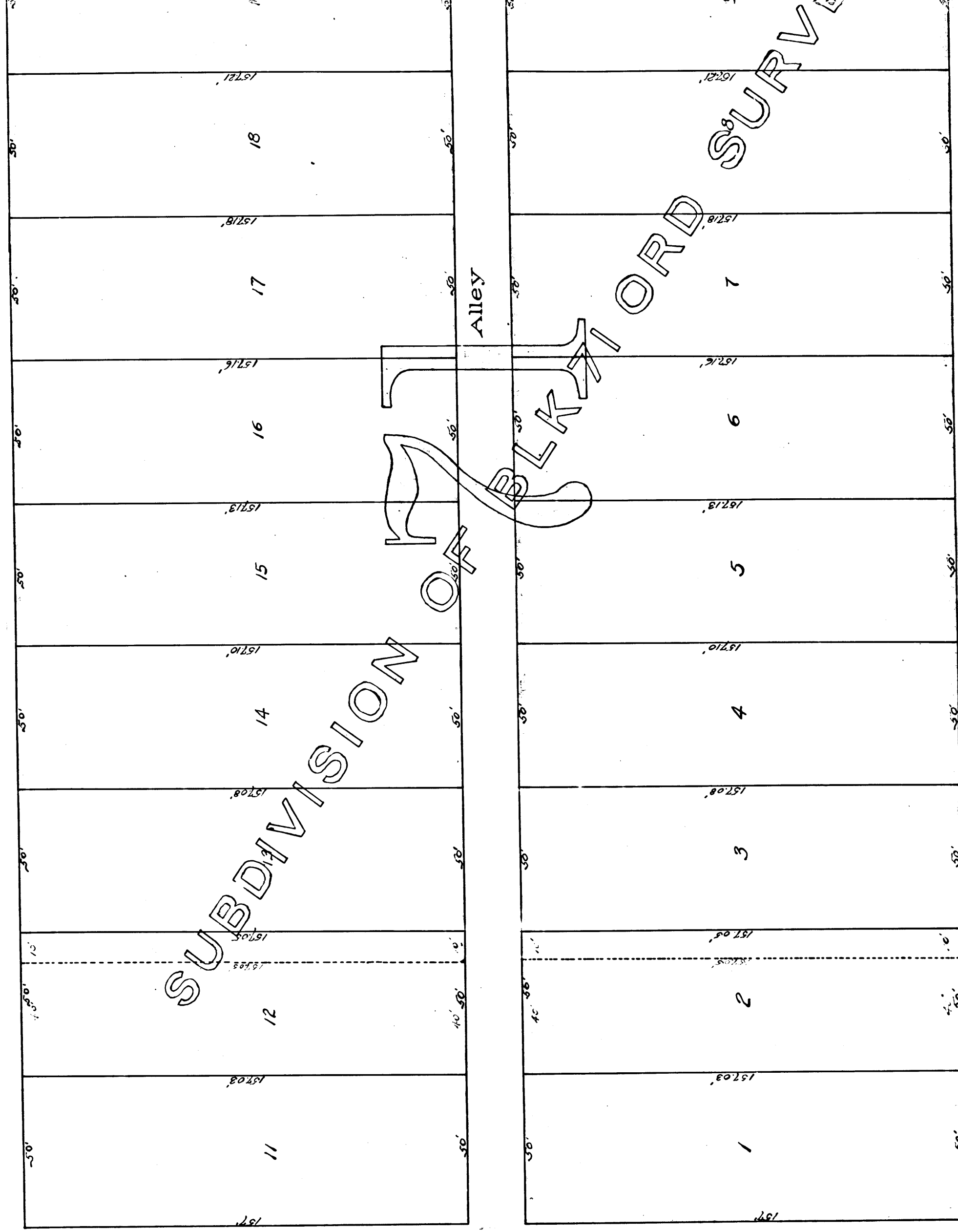
The Green Tint shows the exterior boundaries of the asses.

H O P E S T R E E T

S T R E E T
E L E V E N T H

R.F. 12

A1 OF A2



G R A N D A V E N U E

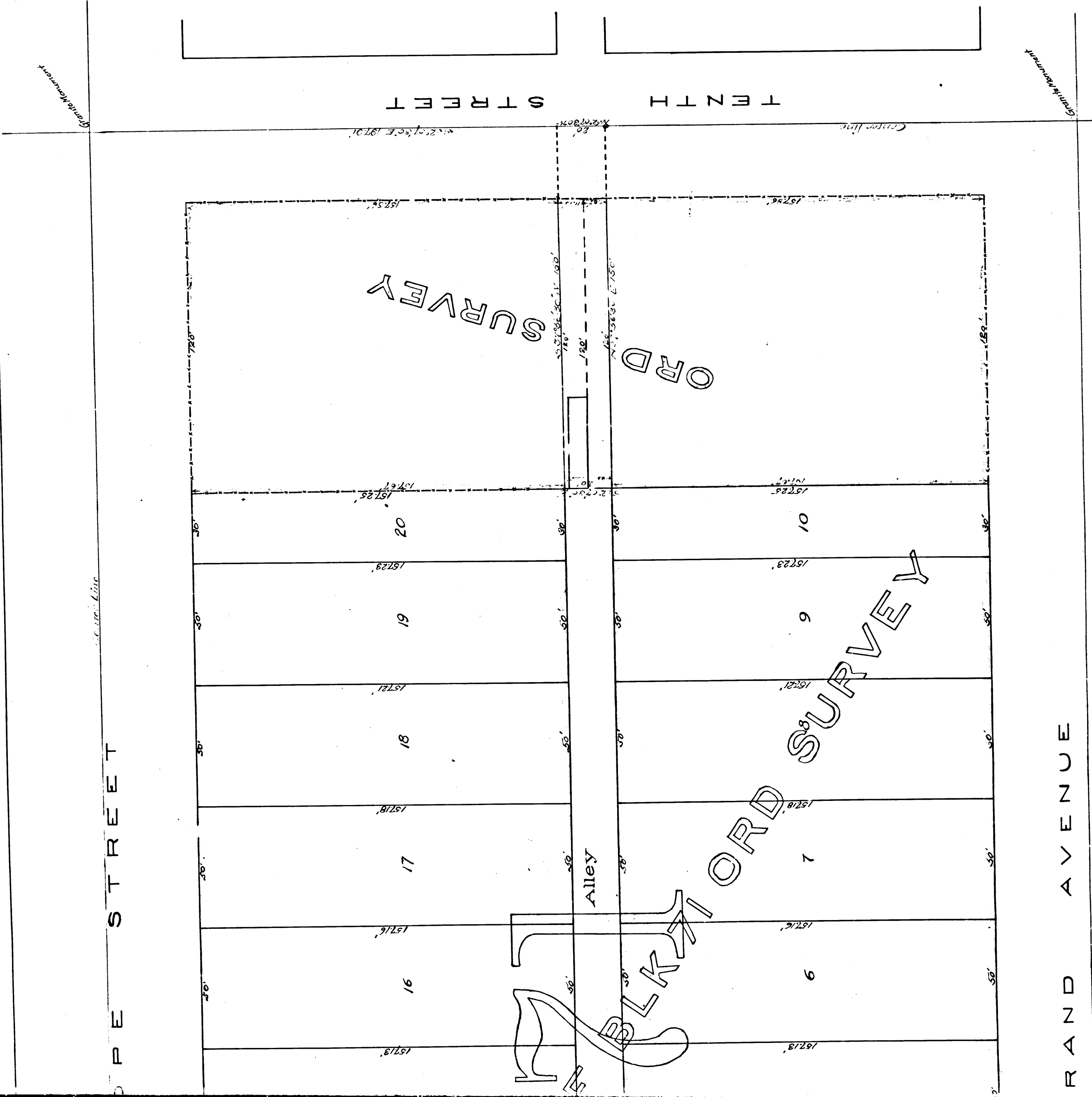
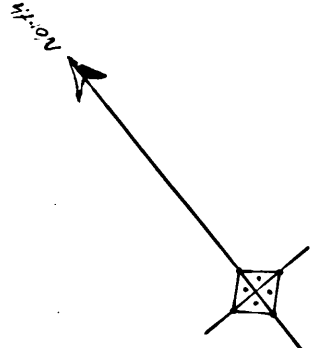
MAP
OF THE
ASSESSMENT DISTRICT
THE EXTENSION OF THE
GRAND AVE. AND HOPE ST.
ST. AND ELEVENTH ST.

Filed Aug. 31 1898
at 5 min past 5 P.M.

CITY OF LOS ANGELES, CAL.

Order Ordinance 48665 (New Series)
Scale 1 inch = 30 feet
Lockweiler City Engineer, May, 1898

Red Tint shows the land to be taken.
Green Tint shows the exterior boundaries of the assessment district.



R.F. 12
A 2 OF A 2