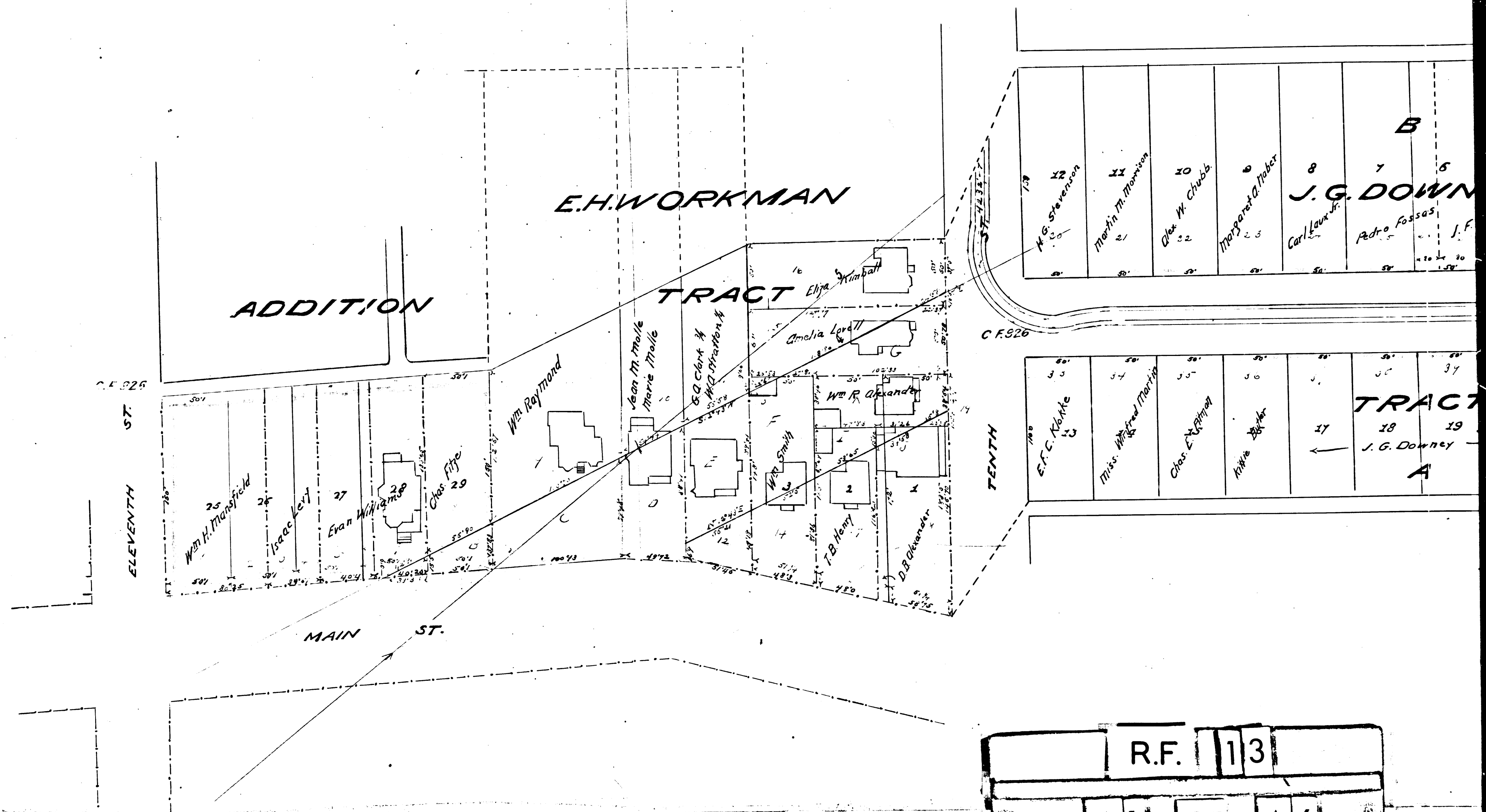


Plat of Broadway changed to Broadway Place, Ord. 39063
 Main St. between 10th St. and 11th St. name established Main St. Ord 39063



Handwritten notes and signatures in the bottom left corner.

R.F.	13	
A 1	OF	A 6

B						
G. DOWNEY						
Pedro Fossas	J. F. Forster	Wm Sexton	Wm H. Avery	Albert C. Hubbard		
58'	50'	50'	50'	50'	50'	50'

1898	1898	1898	1898	1898	1898	1898	1898	1898	1898	1898
Andrew H. Denker & Marie Hammel trustee	Annie P. Spencer	Teresa C. Williams	Rosina Lang	G. D. Sartorius	Agnes J. Brown	John W. Haverstick				
52'	52'	52'	52'	52'	52'	52'	52'	52'	52'	52'

1898	1898	1898	1898	1898	1898	1898	1898	1898	1898	1898
Oliver M. Turner	Mrs H. L. Barnwell	Mary Heipe	Wm Berg	J. M. Elliott	Wilson Hoover	Augusta Schrock				
52'	52'	52'	52'	52'	52'	52'	52'	52'	52'	52'

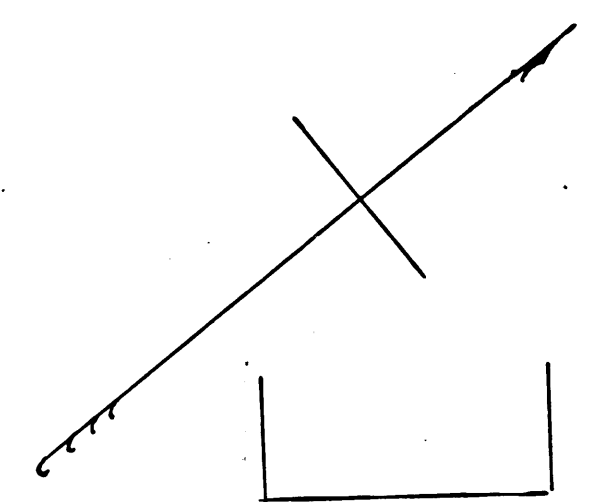
TRACT				
18 19 20				
J. G. Downey				
A				
Thos. C. Knapp	M. M. Morrison	Jos. H. Martin	David B. Alexander	
50'	50'	50'	50'	50'

1897	1897	1897	1897	1897	1897	1897	1897	1897	1897	1897
Mary H. Banning	P. M. Dooner	J. C. Ricker	C. E. Huber	Mary F. Keene	HUBER	Margaret A. Shields	Rebecca Goetschalk	Marie L. Goetschalk	Est. G. W. Howard	Sarah Still
52'	52'	52'	52'	52'	52'	52'	52'	52'	52'	52'

1898	1898	1898	1898	1898	1898	1898	1898	1898	1898	1898
John McCreag	Annie McCreag	Kelle Boyer	F. E. Brown	Mary C. Newby	Sarah J. Huber					
52'	52'	52'	52'	52'	52'	52'	52'	52'	52'	52'

R.F. 13
A 2 OF A 6

of the Assessor
 the Office
BROA
 Terth and
 SCALE
 Dec. 1891. J. H. D.



TRACT

1	2	3	4	5	6	7	8
J. M. Elliff	Wilson Houser	Augusta Schroeder	O. M. Ballard	Jeppie Schroeder	Jules Collamore	E. P. Bryan	Church of the Unity
105	105	105	105	105	105	105	105

St. Vincent's College

ST. VINCENT PLACE 18

SUBD.

1	2	3	4	5	6	7	8	9	10	11	12
J. B. Lankester	J. Lankester	Wm. Raymond	Mary B. O'Connell	Edmund W. Coe	Harvey Lindley	E. M. Jones	Edmund W. Coe	Harvey Lindley	E. M. Jones	Edmund W. Coe	Harvey Lindley
105	105	105	105	105	105	105	105	105	105	105	105

1	2	3	4	5
Walker Lindey	John B. Vogel	Est. L. C. Goodwin	Augusta M. Truitt	Lora G. Hubbell
105	105	105	105	105

1	2	3	4	5	6	7
F. E. Brown	Wm. C. McVey	Sarah J. Huber	P. C. Baker	Harris Newmark	Mrs. Mary Dexter	Annie L. Lankester
105	105	105	105	105	105	105

SEVENTH

1	2	3	4	5	6	7
John E. Jackson	Dolores C. Jackson	Joseph Gilbert	E. O. Forrester	Presley C. Baker	Felicia Dal	J. B. Lankester
105	105	105	105	105	105	105

SIXTH

1	2	3
1st Baptist Church	Harvey Lindey	Board of Education, Los Angeles City
105	105	105

R.F. 13
 A 3 OF A 6

MAP
of the Assessment District.
FOR
The Opening of
BROADWAY
BETWEEN
Tenth and Main Sts.
SCALE, 50' = 1"
Dec. 1891. J. H. Dockweiler,
City Engr.

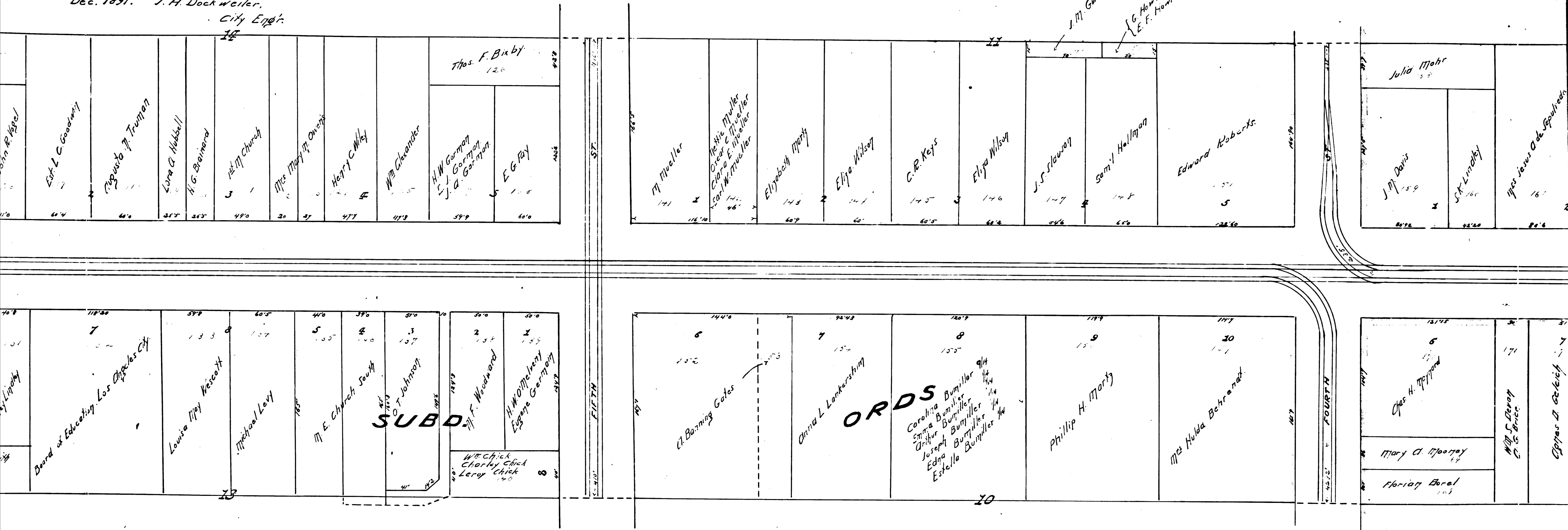
Filed February 25th 1892

Freeman & Freed
City Clerk.
By Geo. E. Seip, Deputy.

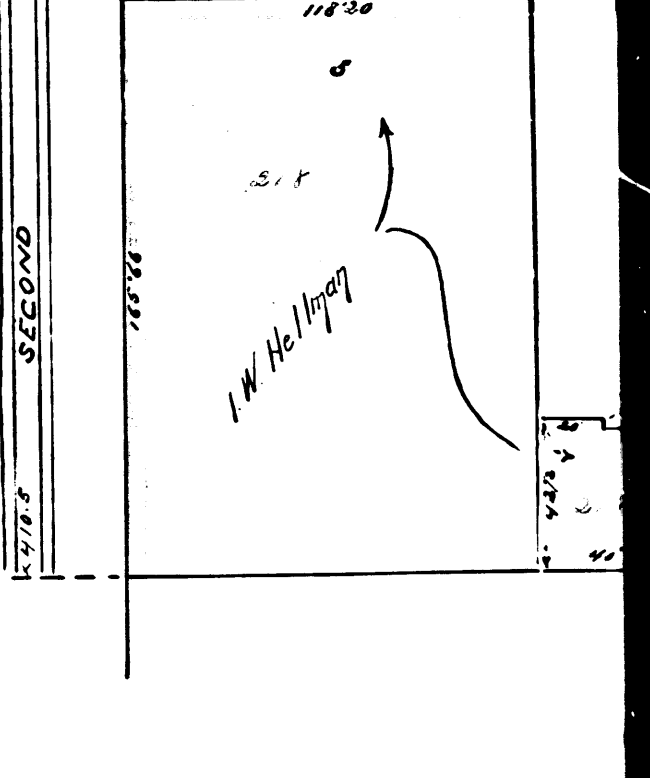
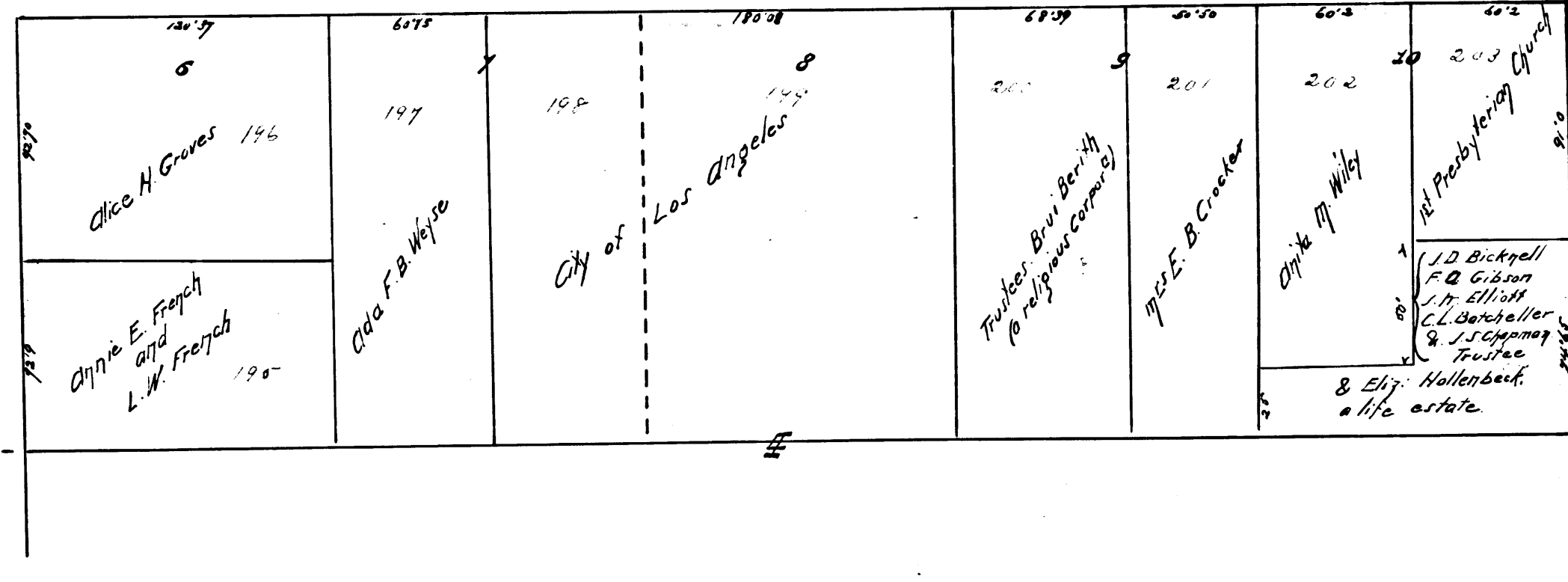
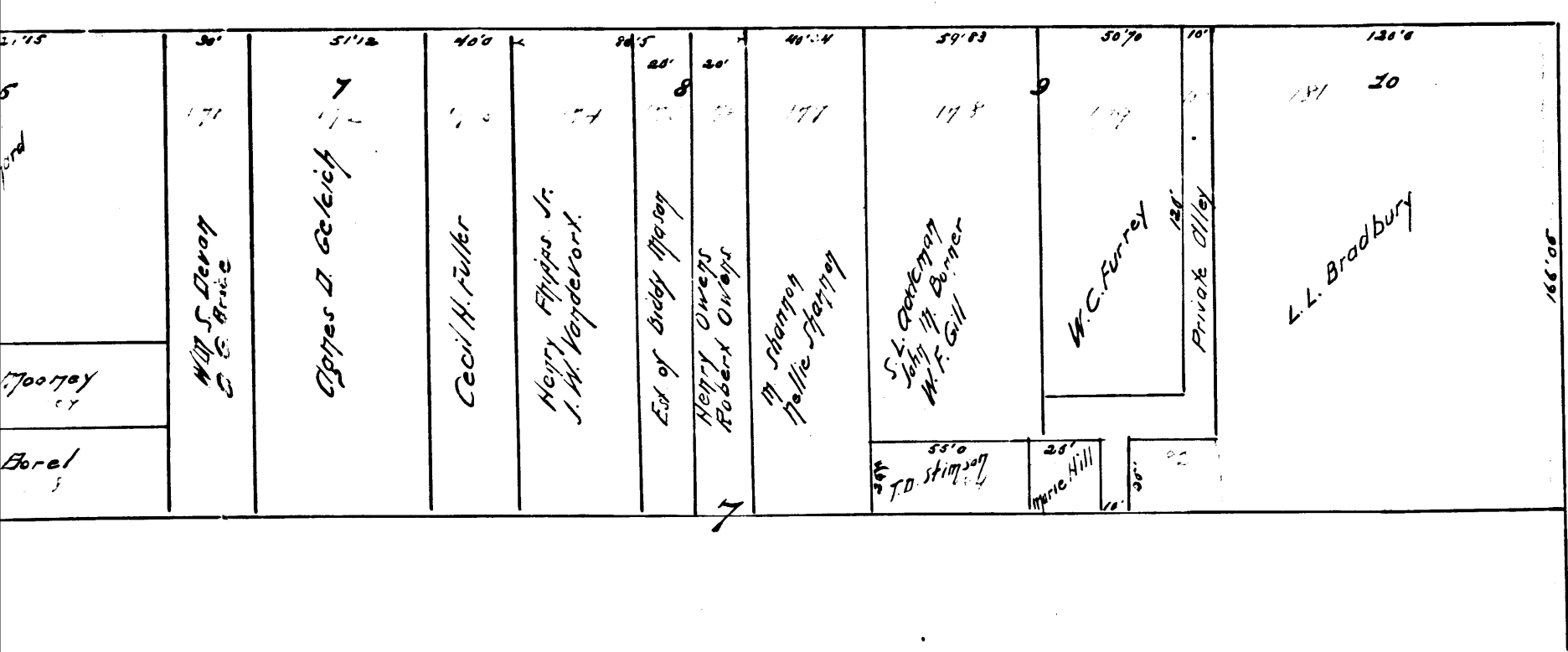
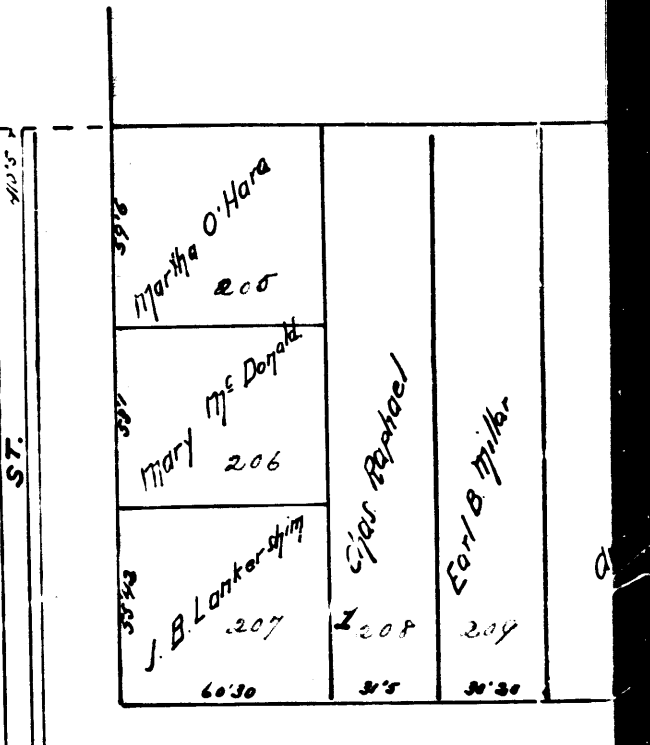
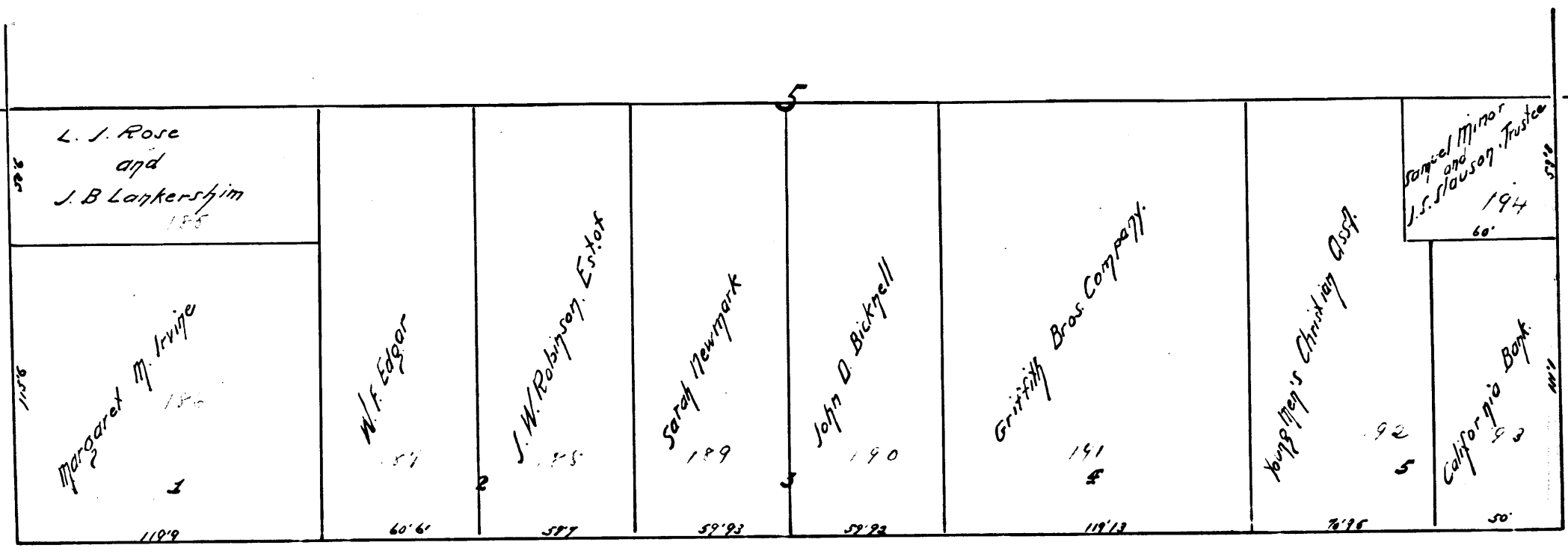
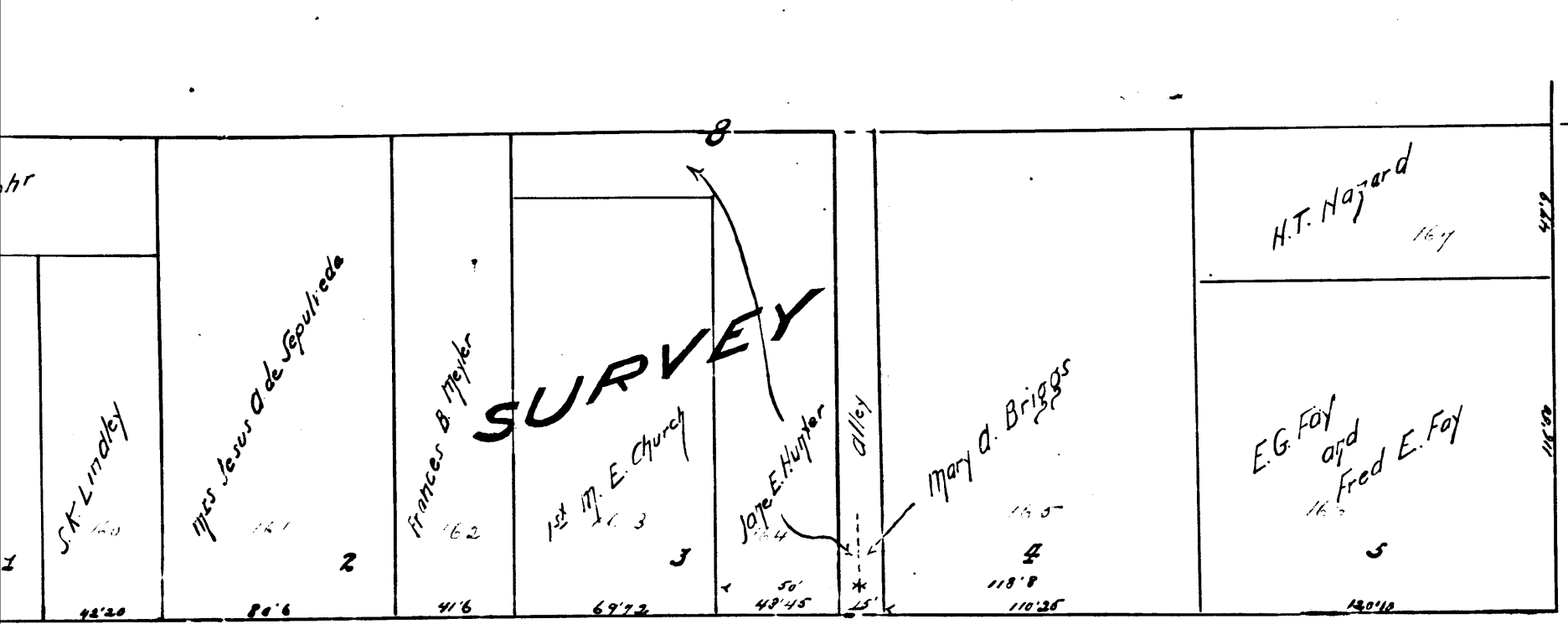
Exhibit "A."

Confirmed and Adopted
by the Council at its meeting
of April 18th 1892.

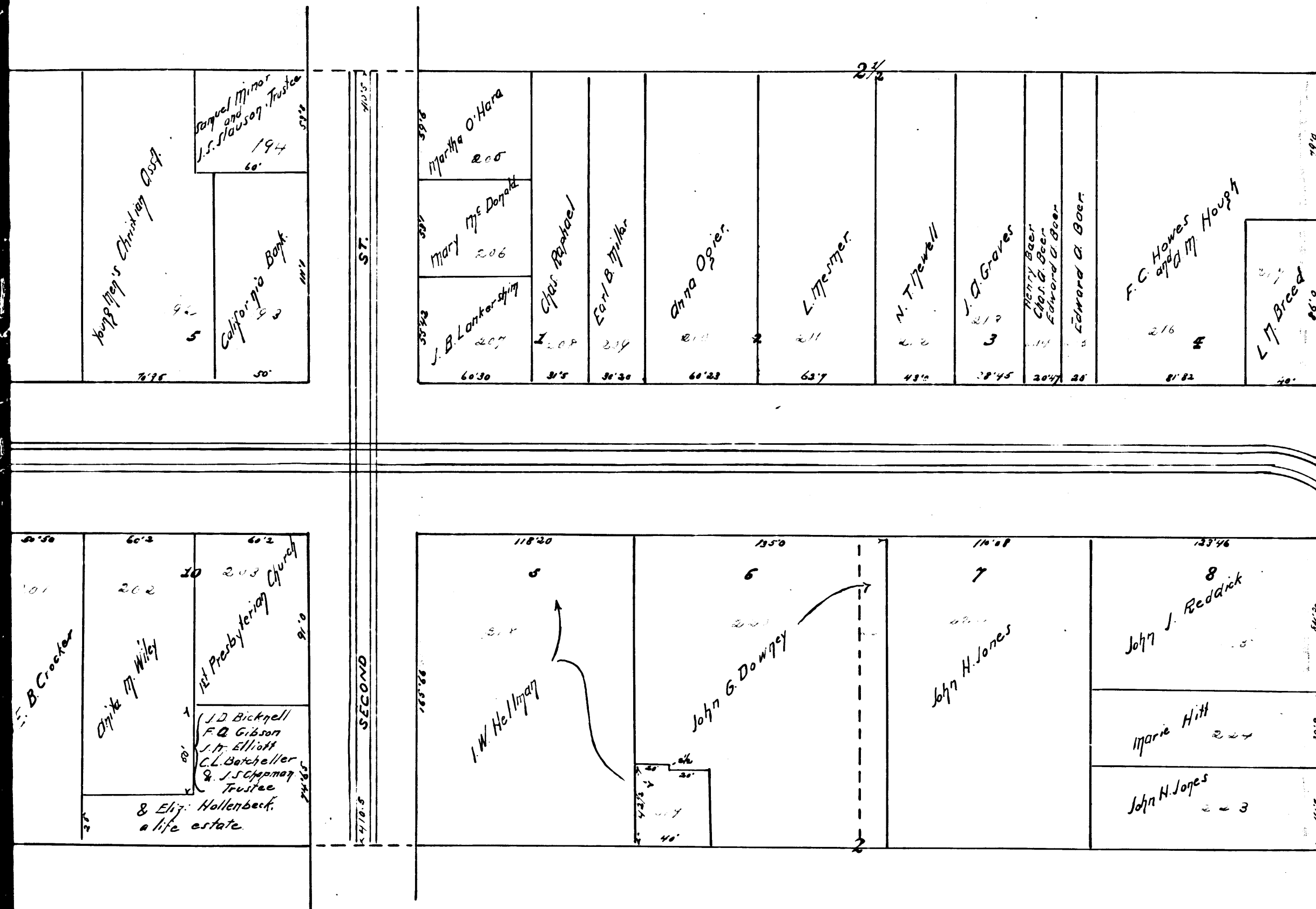
Freeman & Freed
City Clerk.
By Geo. E. Seip, Deputy.
J. M. Guinn
G. Howland
E. F. Howland



R.F. 13
A 4 OF A 6



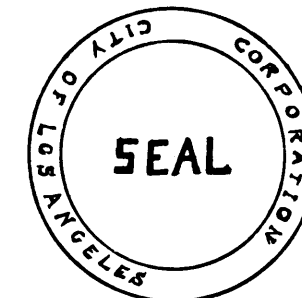
R.F. 13
A 5 OF A 6



STATE OF CALIFORNIA, } ss.
CITY OF LOS ANGELES }

I, Freeman G. Teed, City Clerk of the City of Los Angeles, do hereby certify the foregoing to be a full, true and correct copy of *Plat of Assessment district for the Opening of Broadway from 10th St. to Main St. as confirmed and adopted by Council at its meeting of April 18th 1892. and as per Ordinances No. 1067 and 1131. New Series*

In testimony whereof I have hereunto set my hand and affixed the corporate seal of said City, at my office, this 30th day of April A. D. 1892



Freeman G. Teed
City Clerk of the City of Los Angeles

By... Geo. C. Seif... Deputy

R.F. 13
A 6 OF A 6

Filed at the request of
City Clerk
May 2, 1892
At 8 min. past 4 P.M.
J. A. Kelley,
County Recorder
By... W. F. K. Crocker
Deputy
True - S. 1. 00