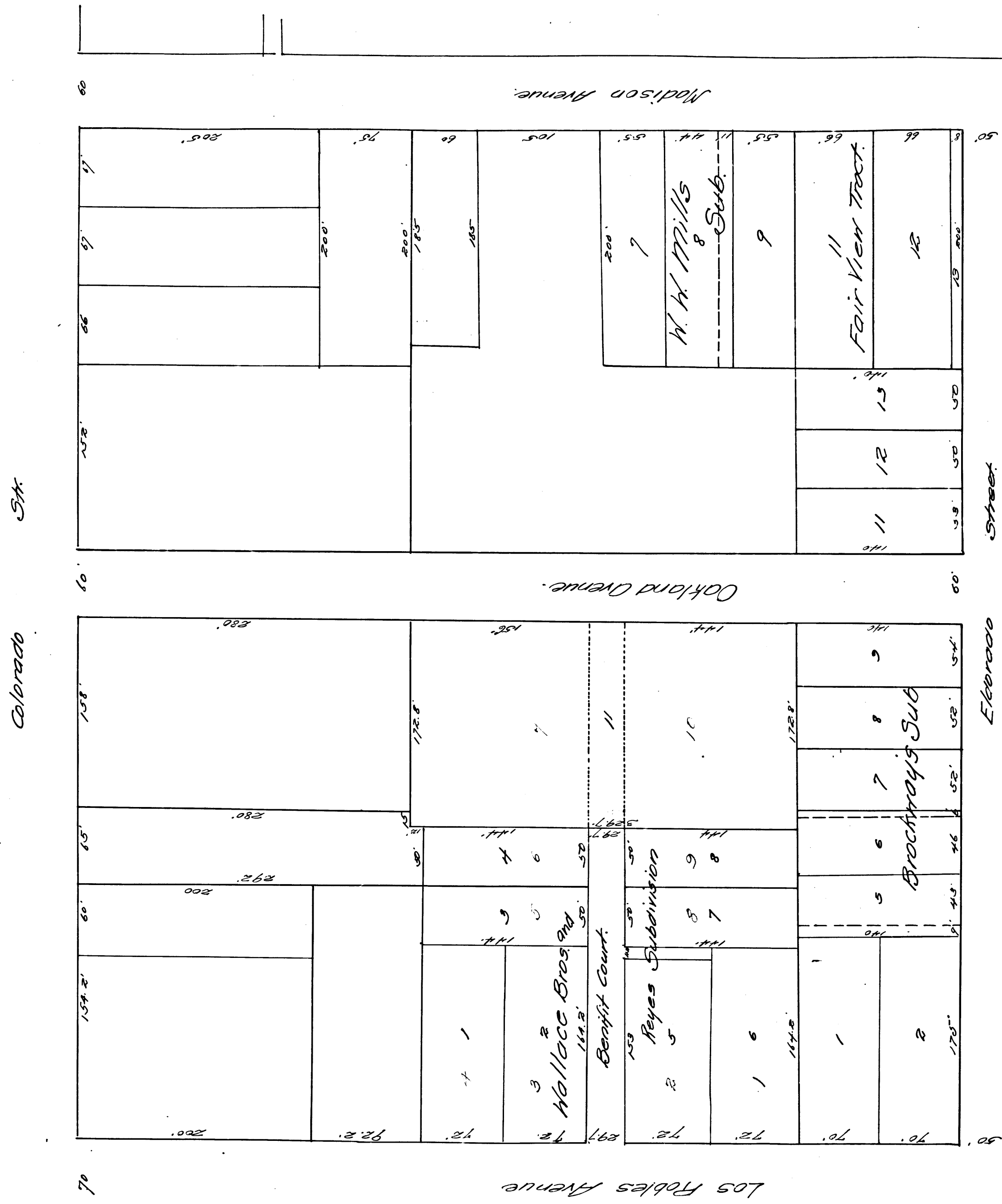


Index #8



Diagram

Exhibiting the assessment district and the land to be taken for the extension of Benefit Court in the City of Pasadena from its present terminus to the west line of Oakland Avenue, also showing the lot areas and the relative location of each district block, lot or portion of lot, parcel of land and its dimensions. Each block, lot or portion of lot taken or assessed is designated and described by the number marked thereon in red ink. Herein the mark "1" means feet. Figures in black ink next to property lines show each the length of said line in feet. Other figures in black ink show the numbers of the lots green section lining shown portions of land to be taken for said extension of Benefit Court. Green figures show the dimensions of said portions of land. Red section lining shows area of assessment district. Continuous black lines show original lot lines. Broken black lines show subdivisions of original lots. Colored headings show boundaries of subdivisions named. The diagram is drawn to a scale of 1/4" = 1/2'.

H.B. Clapp
City Engineer

Confirmed and adopted by Resolution No. 987
of the Board of Trustees Pasadena July 27, 1916

Filed Aug 6, 1916

Index #8