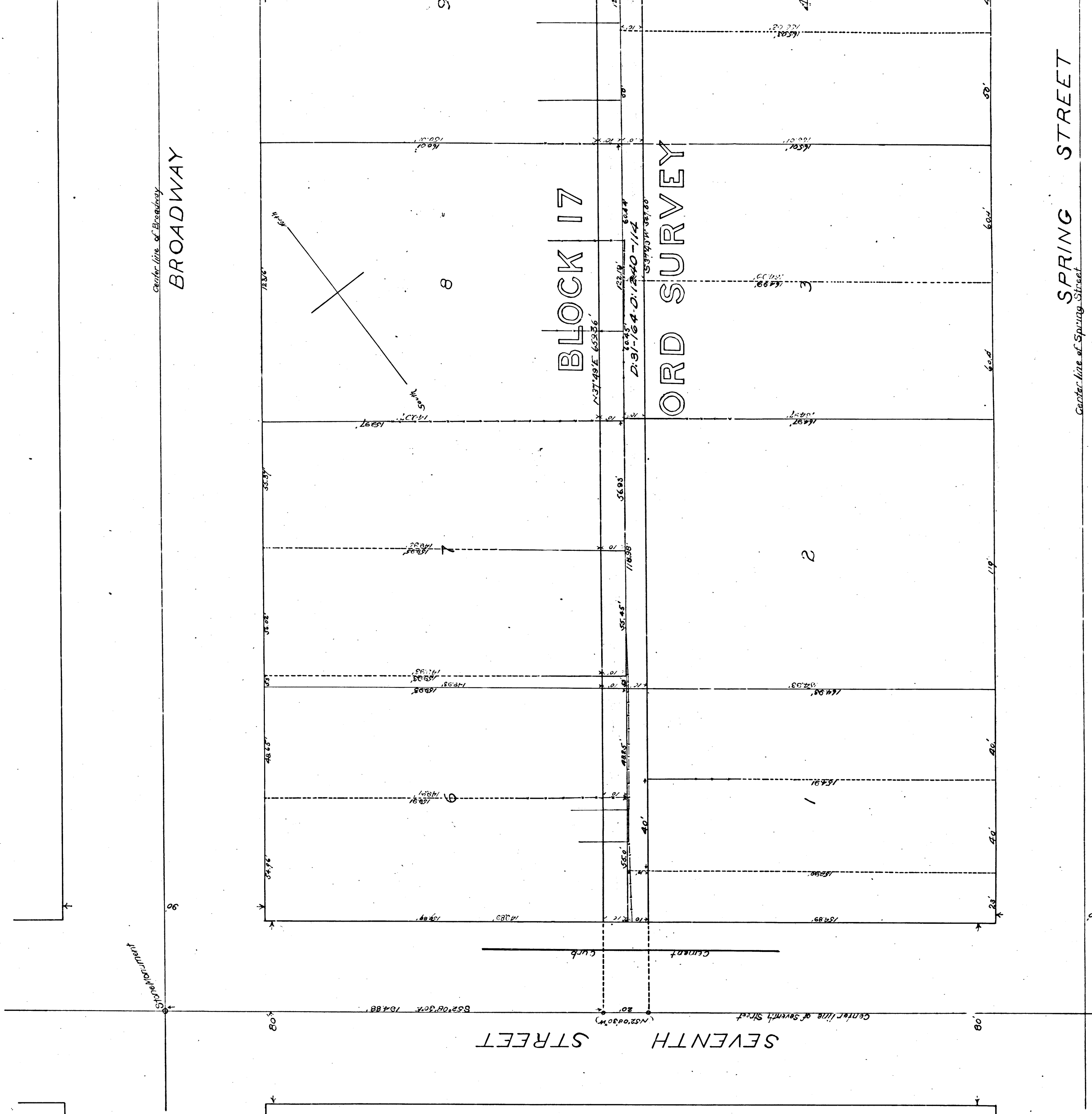


MAP SHOWING  
 THE ASSESSMENT DISTRICT  
 FOR THE OPENING OF AN  
 ALLEY BETWEEN SPRING ST. AND BROADWAY  
 SIXTH ST. TO SEVENTH ST.

Scale 1 inch = 30 feet  
 CITY OF LOS ANGELES Ordinance 4639  
 J.H. Dockweiler City Engineer  
 January, 1898

The land to be taken is shown by the Red tint  
 The exterior boundaries of the Assessment District are shown by the Green



R.F. 18

ALL OF A 21

MAP SHOWING  
 THE ASSESSMENT DISTRICT  
 FOR THE OPENING OF AN  
 BETWEEN SPRING ST. AND BROADWAY  
 SIXTH ST. TO SEVENTH ST.

CITY OF LOS ANGELES Ordinance 4639  
 J.H. Dockweiler City Engineer  
 January, 1898

To be taken is shown by the Red tint  
 or boundaries of the Assessment District are shown by the Green tint

Filed June 14 1898  
 at 42 min. past 12 M.



A 2 OF A 2  
 R.F. 18