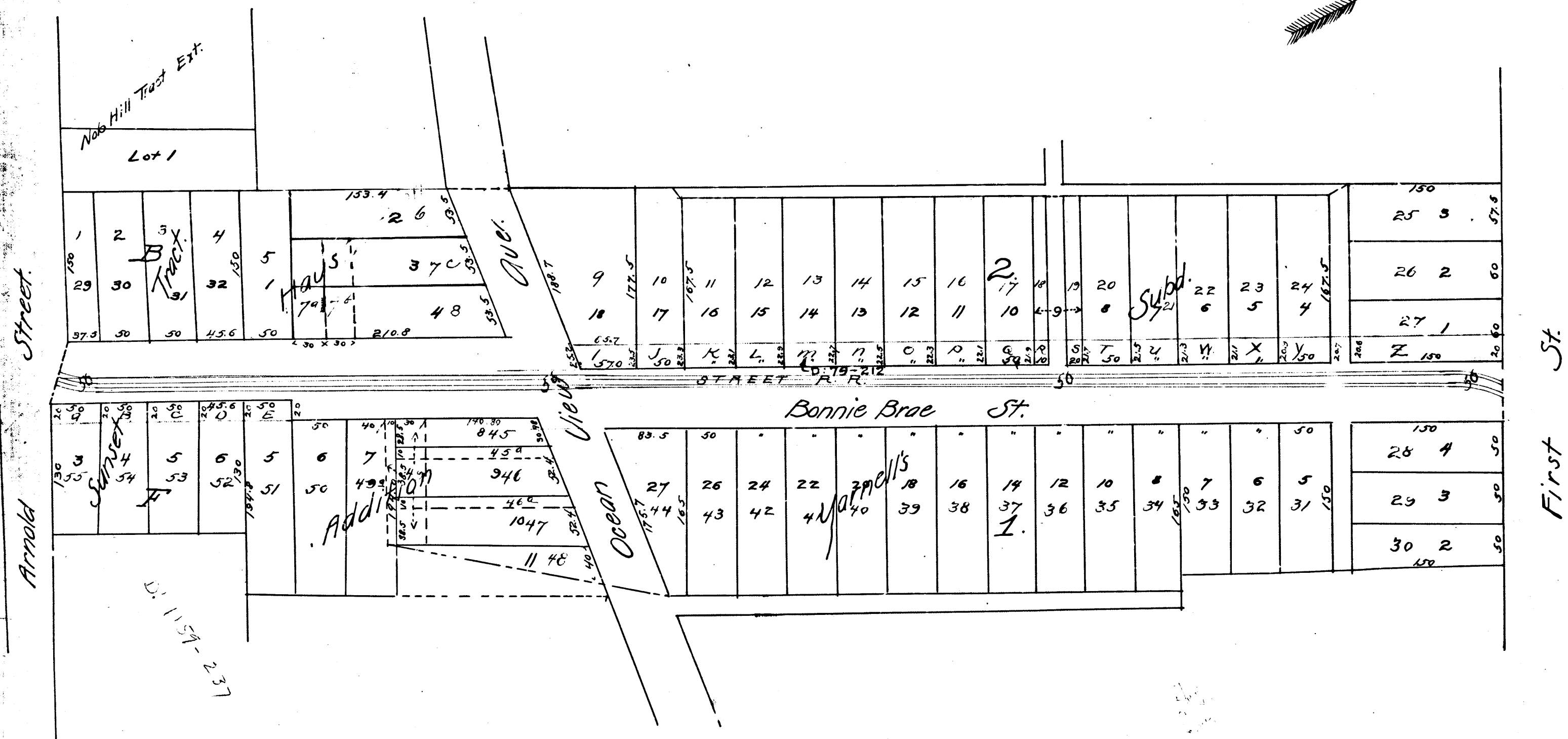
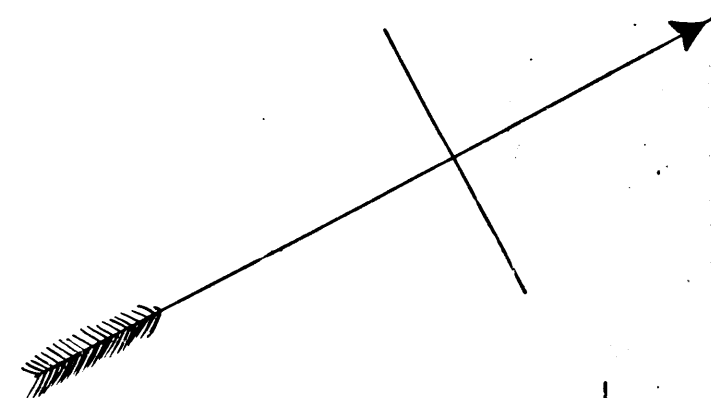


**MAP**  
 OF THE  
 Assessment District  
 FOR THE  
 WIDENING OF  
**BONNIE BRAE ST.**  
 BETWEEN  
 First St. and Arnold St.  
 July 1892 J. H. Dockweiler City Eng.  
 Scale: 100 ft = 1 in  
 Exhibit A.

Filed at the request of  
 C. A. Luckenbach, Sep. 26, 1894.  
 at 10 min past 12 M.

Arthur Bray  
 County Recorder



R.F. | 20