

# MAP

of the  
Assessment District  
for the  
Opening and extending of  
**Darwin Ave.**  
from its present western terminus into Douillard St.

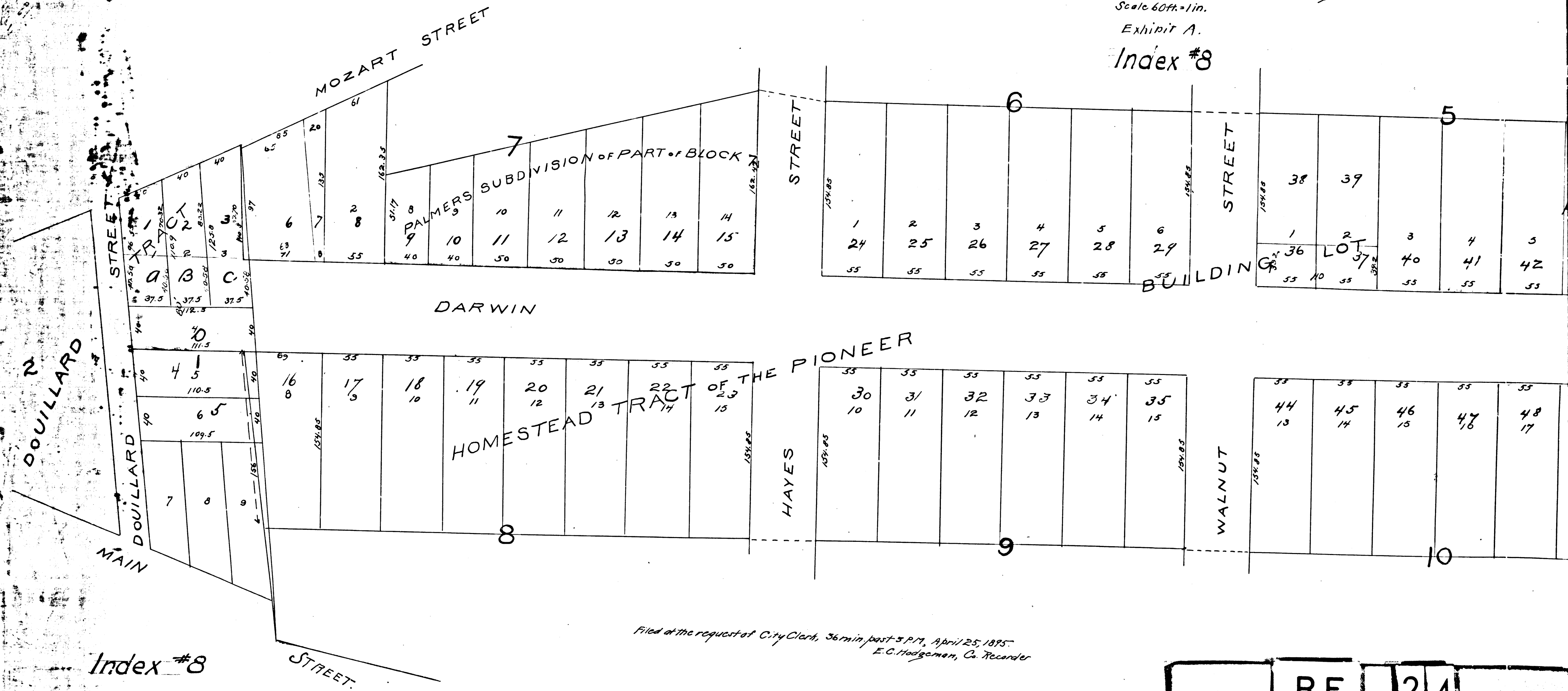
Dec. 1894.

J.H. Dockweiler, City Eng.

Scale 60ft. = 1in.

Exhibit A.

Index #8



Filed at the request of City Clerk, 36 min past 5 P.M., April 25, 1895.  
E.C. Hodgeman, Co. Recorder

	R.F.	24
A1	OF	A2

# MAP

of the

Assessment District

for the

Opening and extending of

**Darwin Ave.**

from its present western terminus into Douillard St.

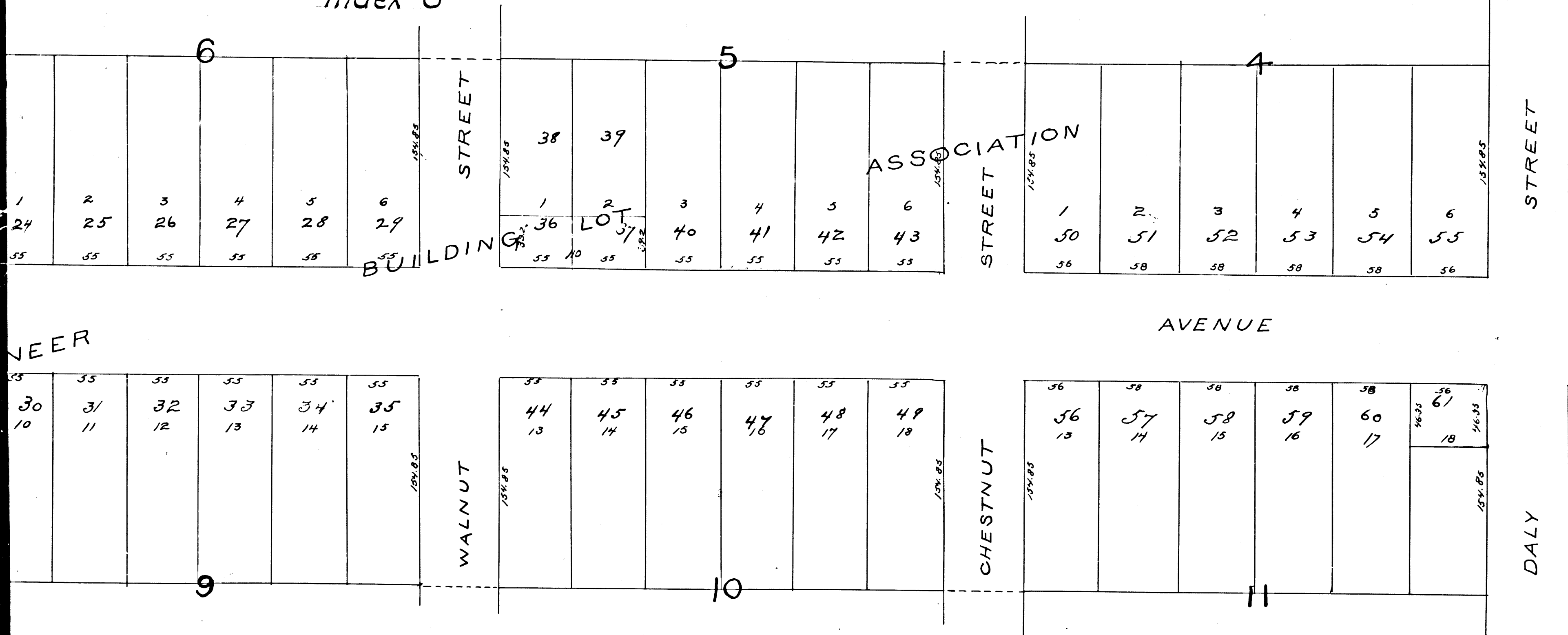
Dec. 1897.

J.H. Dockweiler, City Eng.

Scale 60ft.=1in.

Exhibit A.

Index #8



min. past 5 P.M., April 25, 1895.  
E.C. Hodgeman, Co. Recorder

Index #8

R.F. 24  
A 2 OF A 2