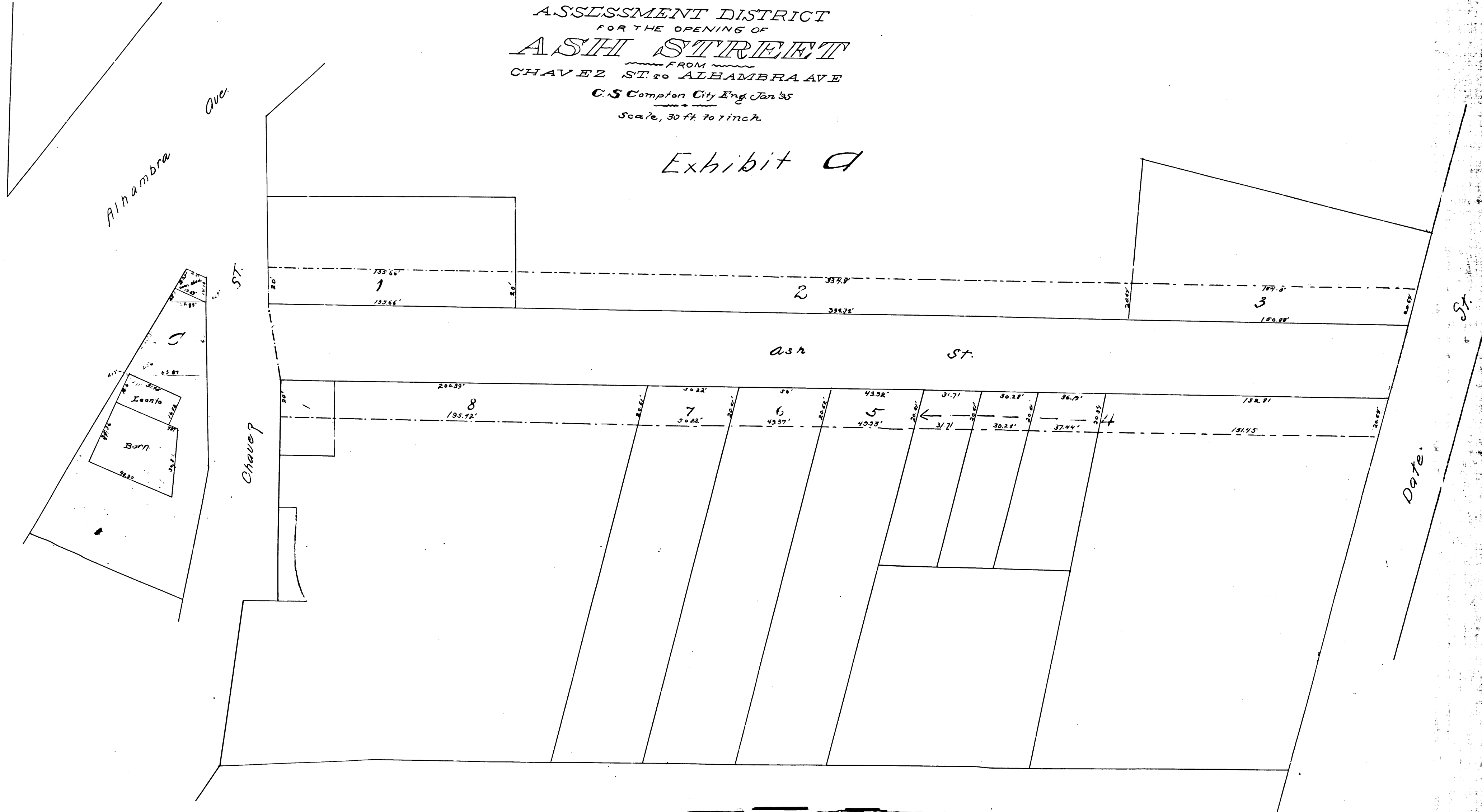


Filed at request of  
City Clerk, May 28, 1895  
at 51 min. past 3 P.M.  
E.C. Hodgeman  
Co. Recorder  
A. Caldwell,  
Deputy

MAP  
OF THE  
ASSESSMENT DISTRICT  
FOR THE OPENING OF  
**ASH STREET**  
FROM  
CHAVEZ ST. TO ALHAMBRA AVE  
C.S. Compton City Eng. Jan 35  
Scale, 30 ft. to 1 inch

Exhibit A

Main St



R.F. 25