

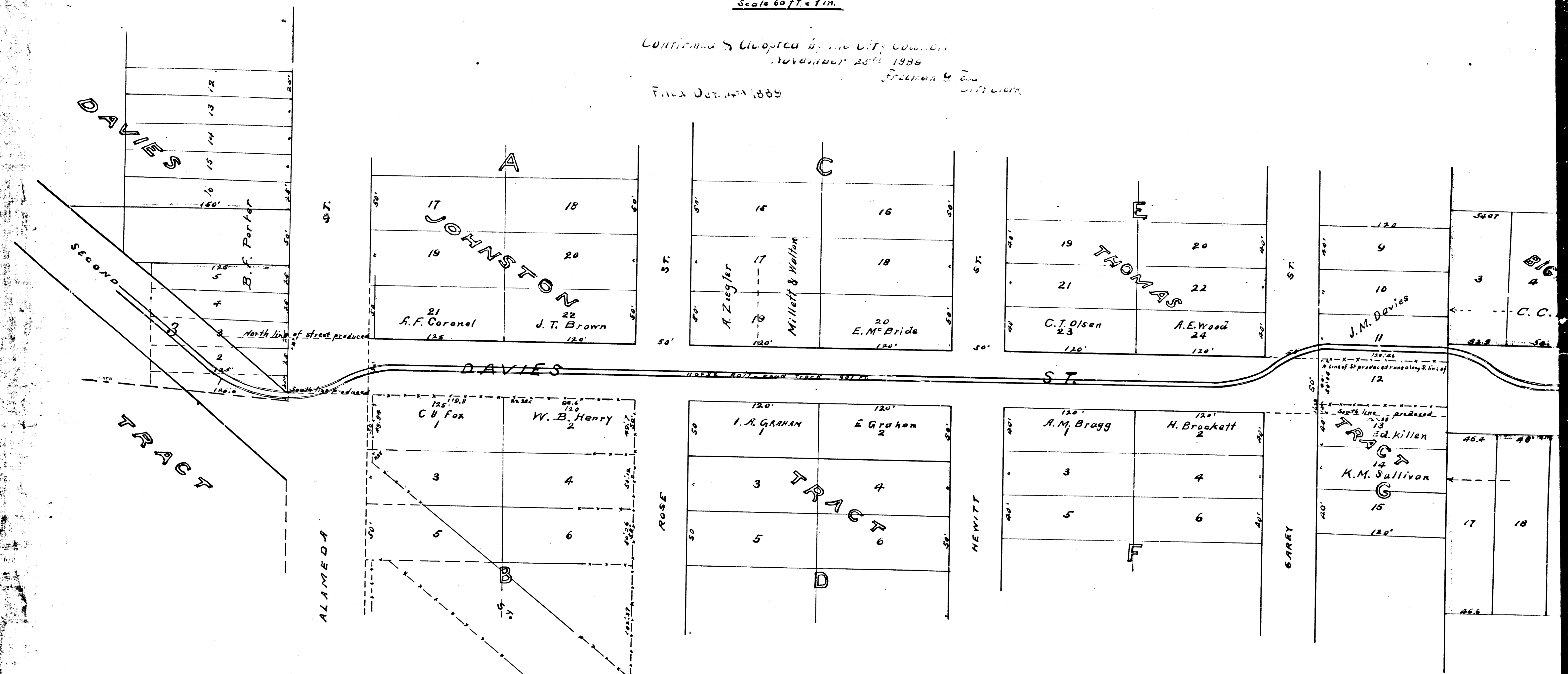
map
of
Davies Street.
from

Second St. to Bigelow Tract.
Platted July 1889 - Fred. Eaton, City Eng.
Scale 60 ft. = 1 in.

Filed at the request of City Clerk
November 30th 1889
JOHN W. FRANCIS
County Recorder

Confirmed & Adopted by the City Council
November 25th 1889
Frederick G. Eaton
City Clerk

Filed Oct. 14th 1889



Same map as filed April 27/91
and now 2^d Street
E.T.W

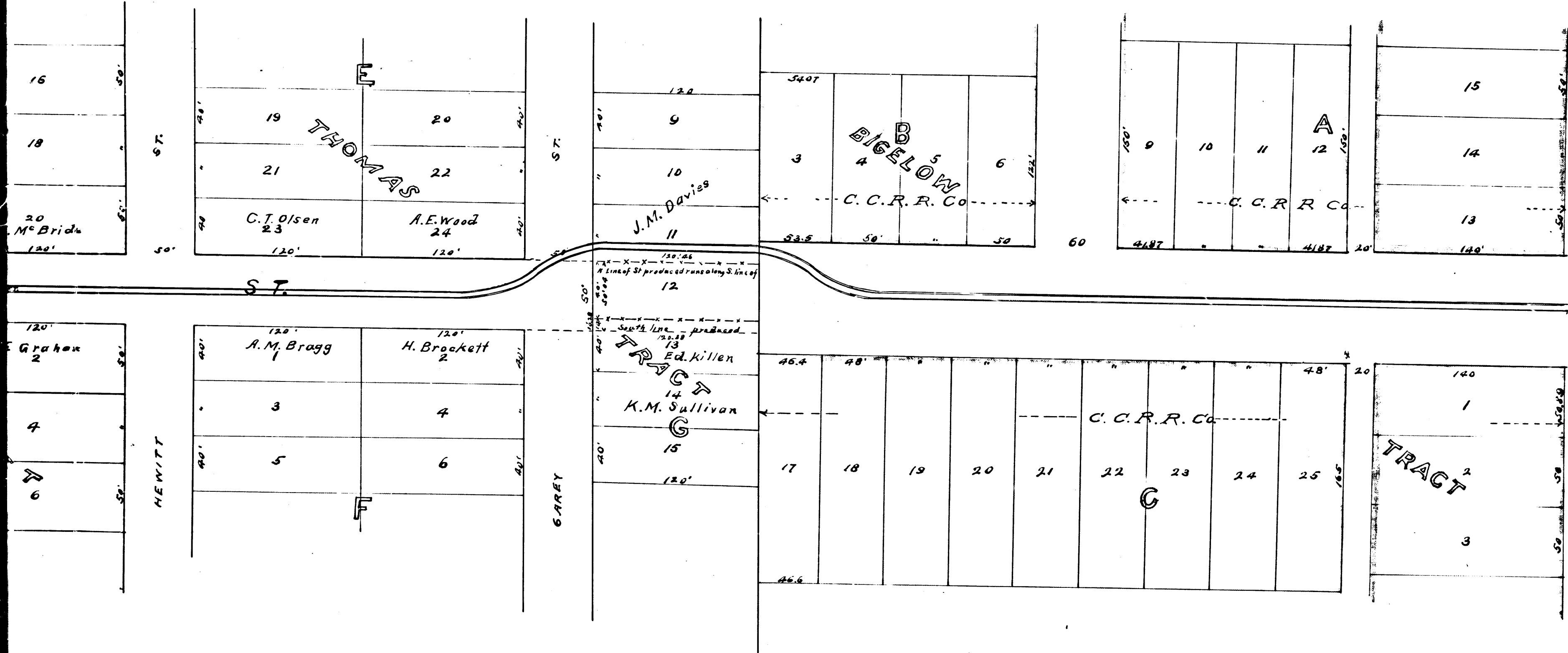
R.F.	33
A1	OF A2

et.

Tract
City Eng.

Filed at the Registry of City Clerk
November 30th 1889
JOHN W. FRANCIS
County Recorder

City Clerk
1889
Francis W. ...



Same map as filed April 27/91
and now 2^d Street
E.T.W

R.F. 33
A 2 OF A 2