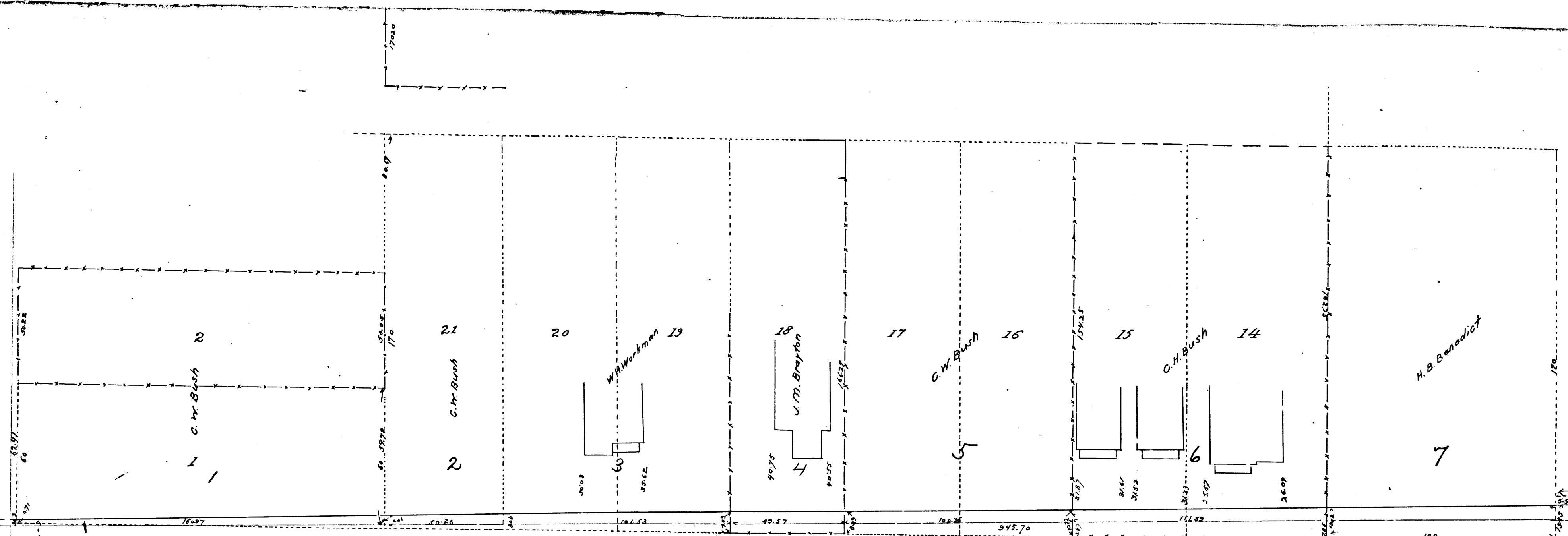


AVE.

LOUISIANA

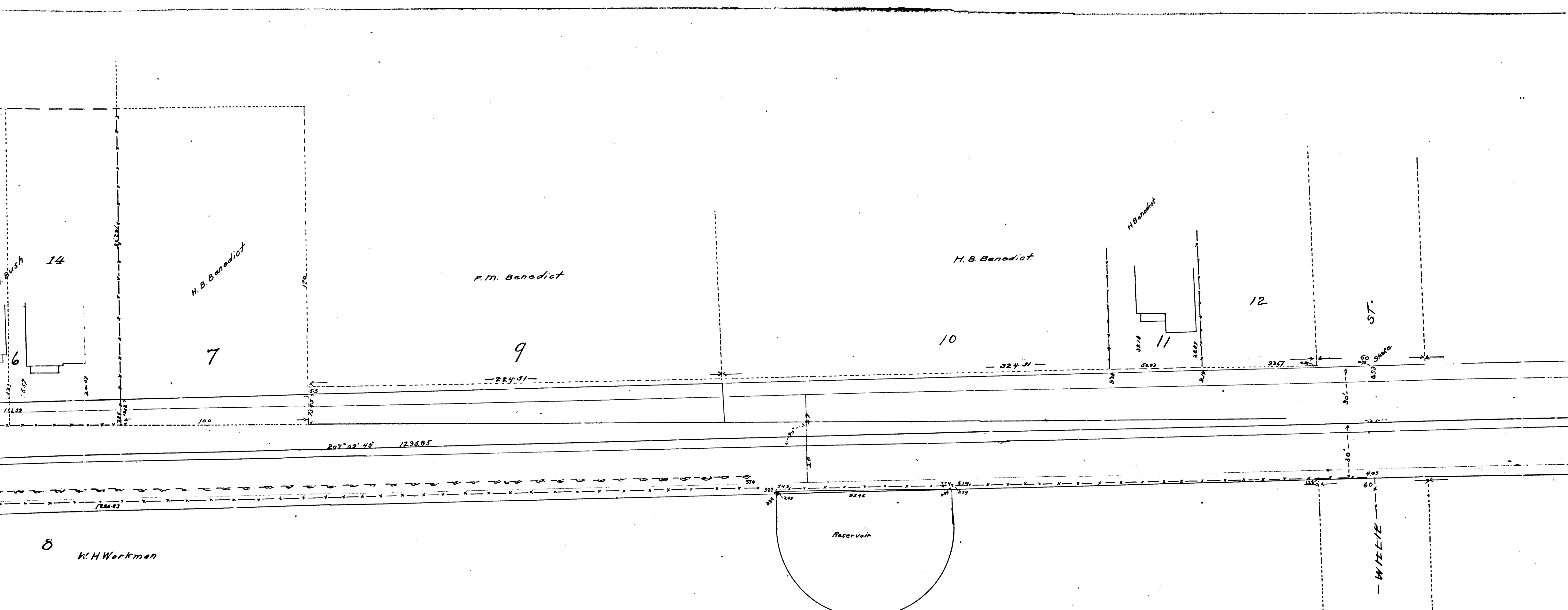


8 W. H. Workman

Notes.  
 Pencil lines on the original appear in purple ink.  
 The blue lines represent street lines.

Filed Jan. 27, 1890, at the request of the City Clerk.  
 John W. Francis, County Recorder.

R.F. 36  
 A1 OF A4



Filed Jan. 27, 1890, at the request of the City Clerk.  
 John W. Francis, County Recorder.

	R.F.	36
A 2	OF	A 4

MAP  
OF  
**CHICAGO STREET**

BETWEEN  
LOUISIANA AND (STEVENSON AVE.) SECOND STREET.

J. E. Hollenbeck

Scale, 30 ft to 1 in ch  
Exhibit A.

L. W. Dennis

13

Sht: 7

15

14

J. E. Hollenbeck

17

	R.F.	36	
A 3	OF	A 4	

ST.

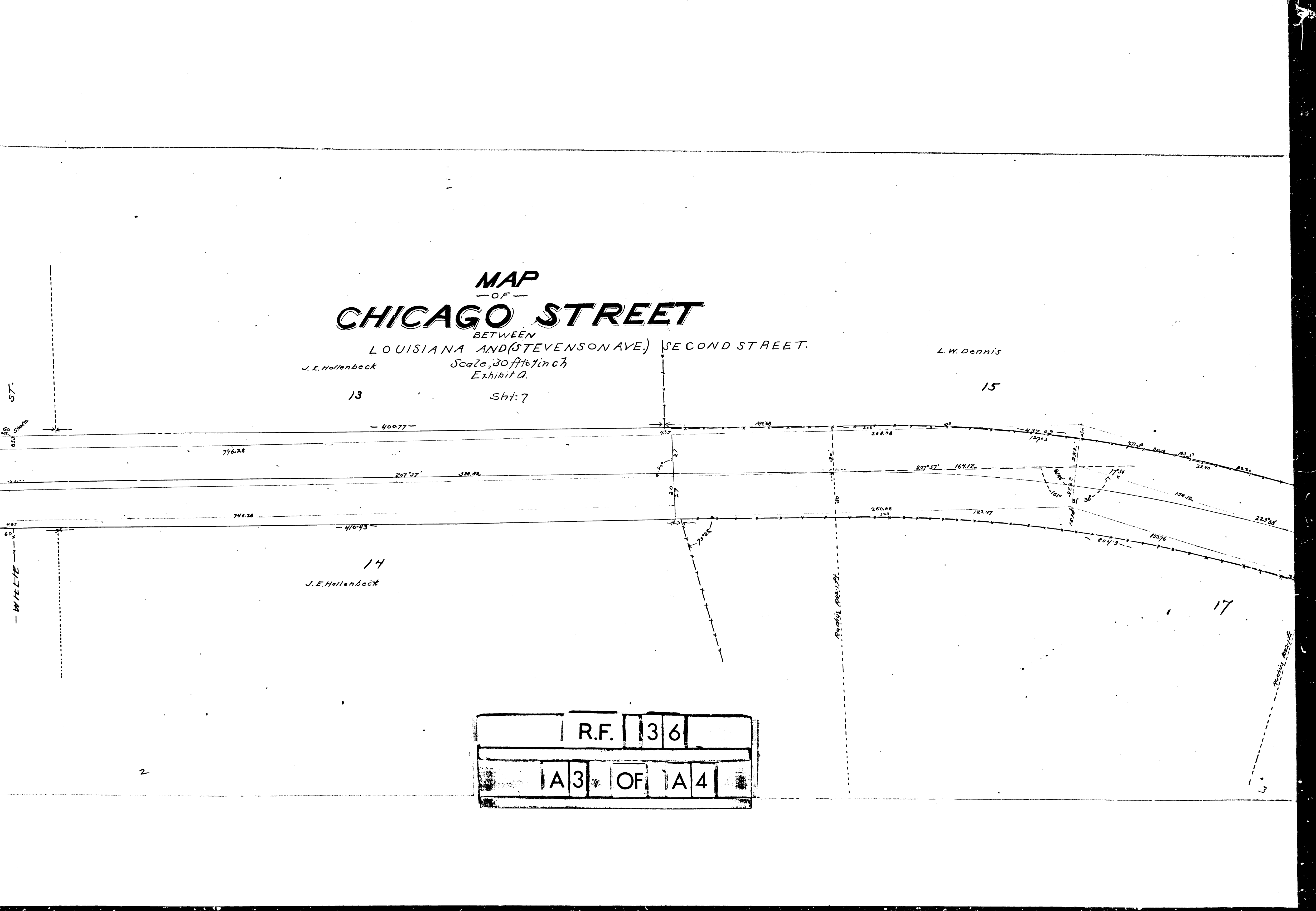
45' Shake

60'

WILLYE

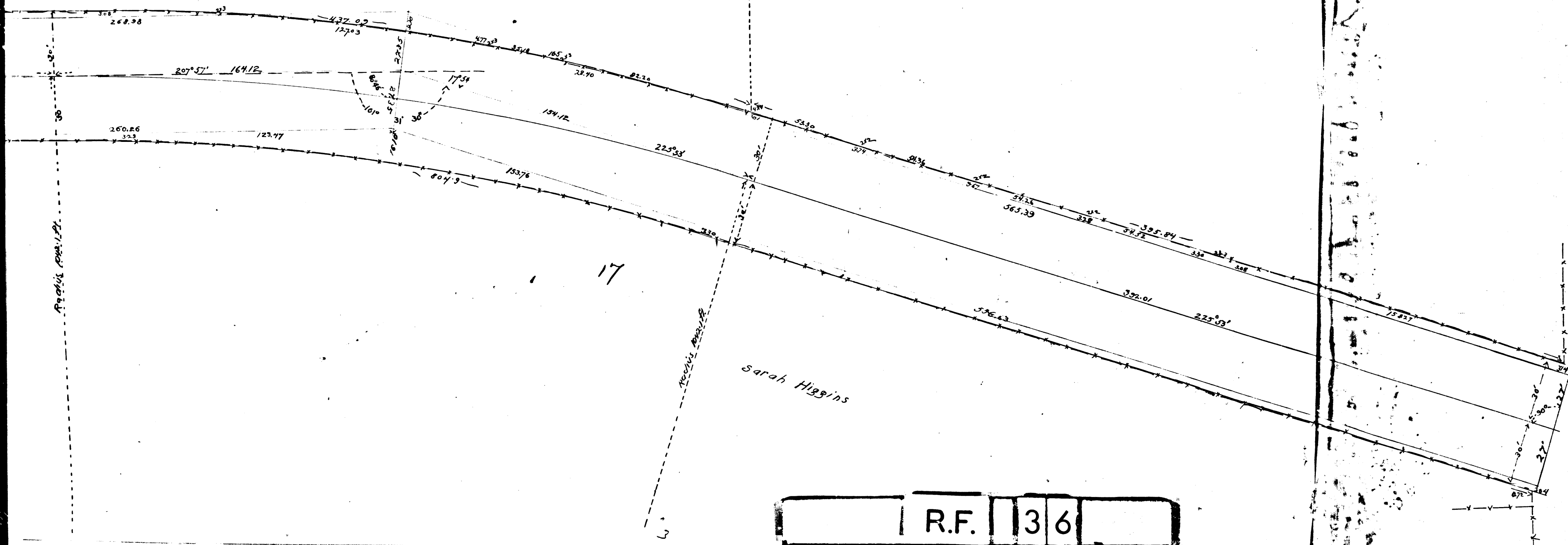
2

3



L. W. Dennis

15



Sarah Higgins

17

R.F.	36	
A4	OF	A4

SECOND ST