

R.F. 39
 A1 OF A10

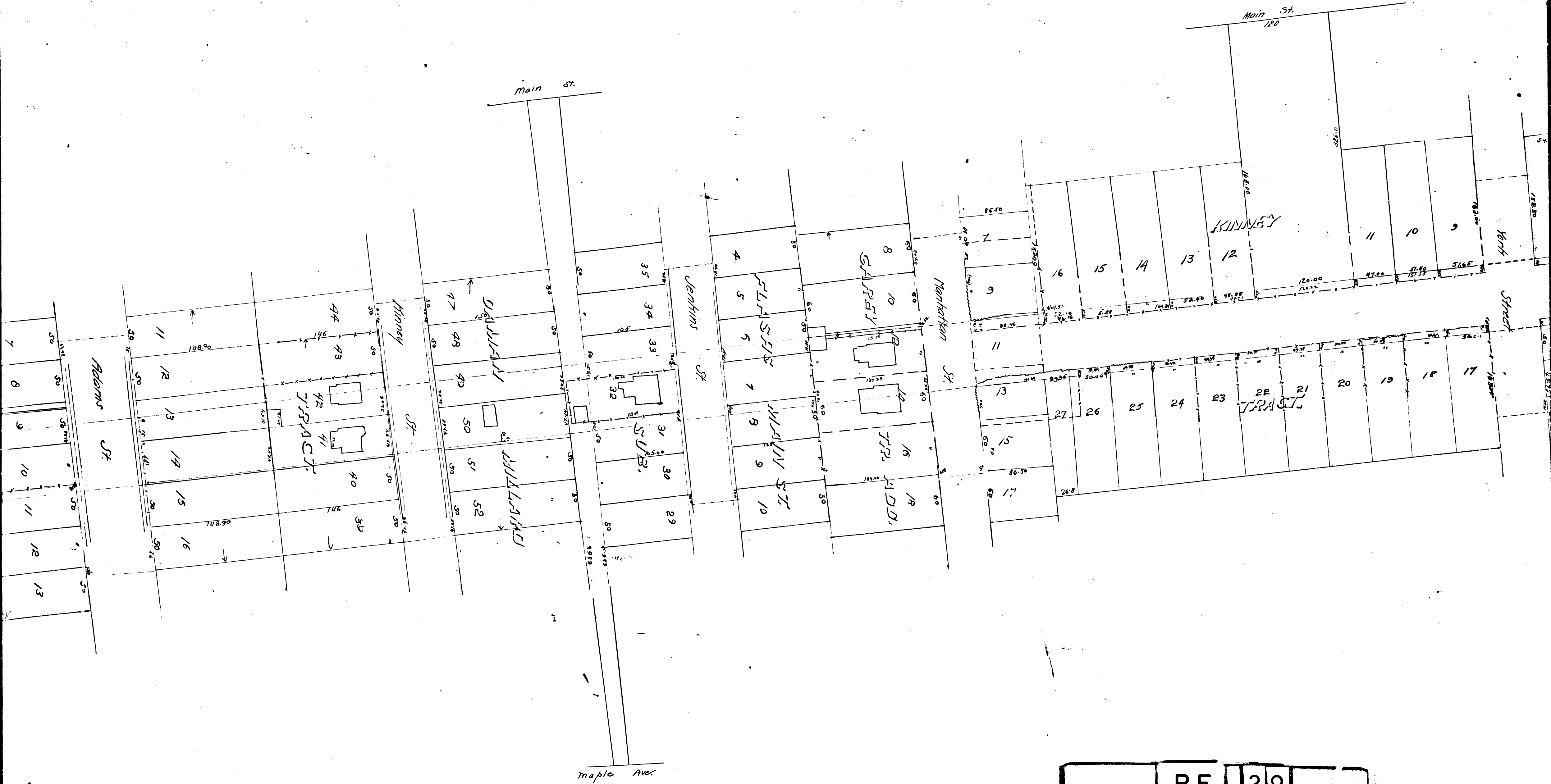
Filed at the request of F.G. Teed, City Clerk.
 May 1, 1891, at 10 min past 11 A.M.
 J.A. Kelley, County Recorder.





R.F. 39
 A 2 OF A 10

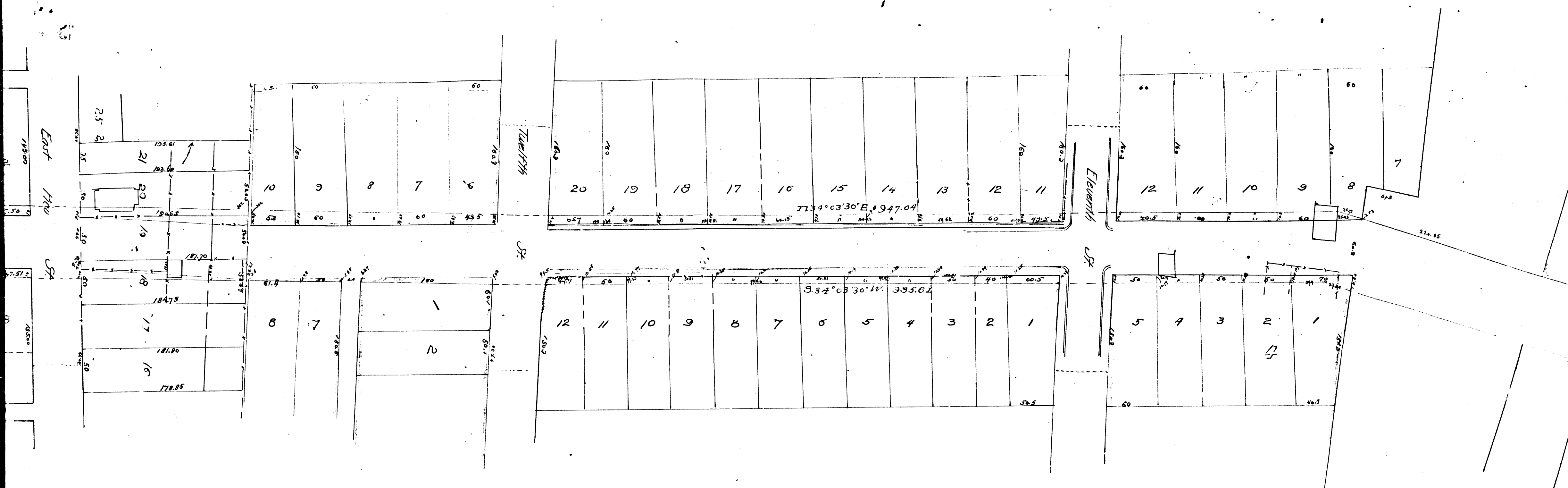
21



R.F.	39
A 3	OF A 10

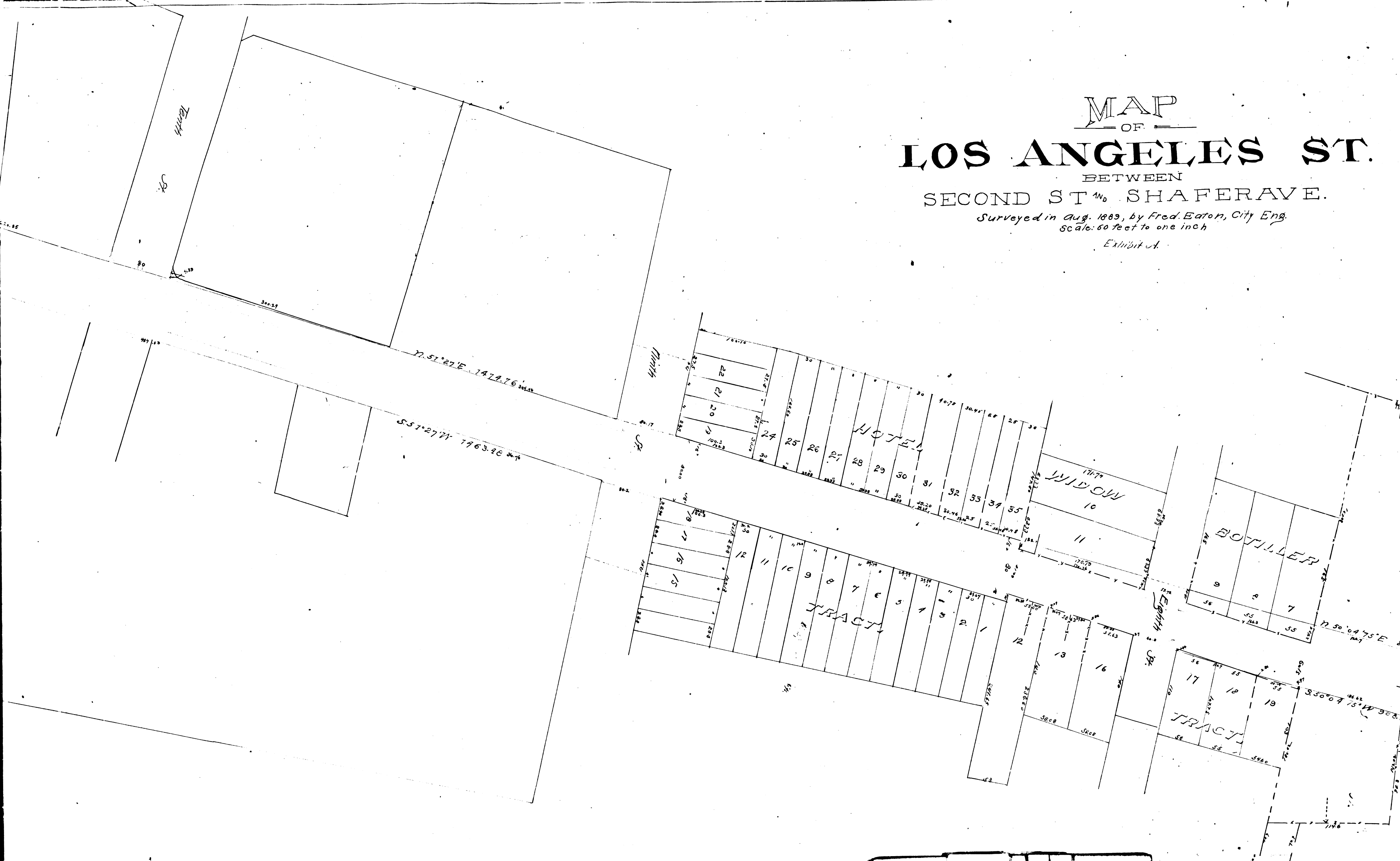


R.F.	39	
A 5	OF	A 10



R.F.	39	
A 6	OF	A 10

MAP
 OF
LOS ANGELES ST.
 BETWEEN
 SECOND STND SHAFER AVE.
Surveyed in Aug. 1883, by Fred Eaton, City Eng.
Scale: 60 feet to one inch
 Exhibit A.

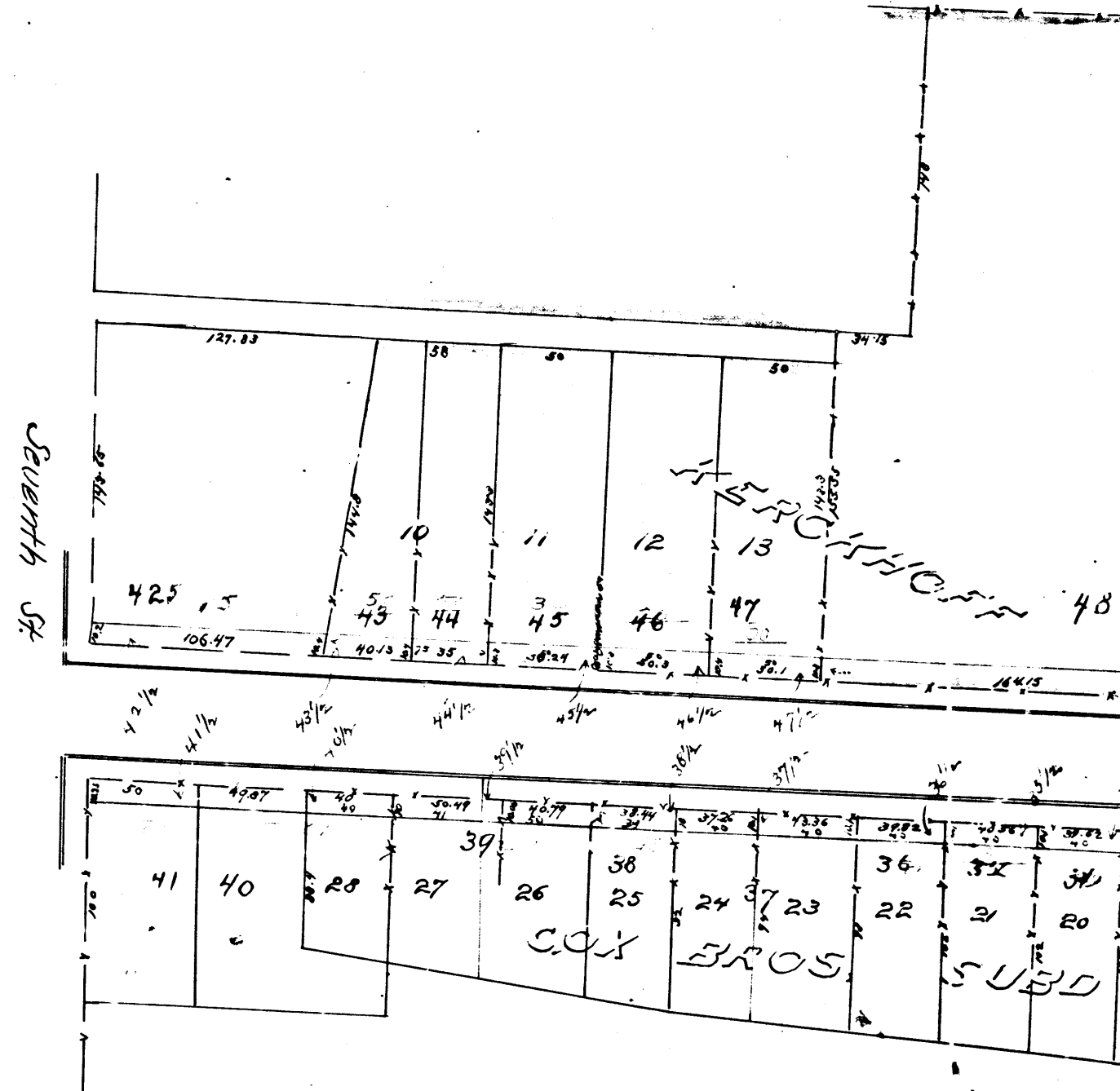
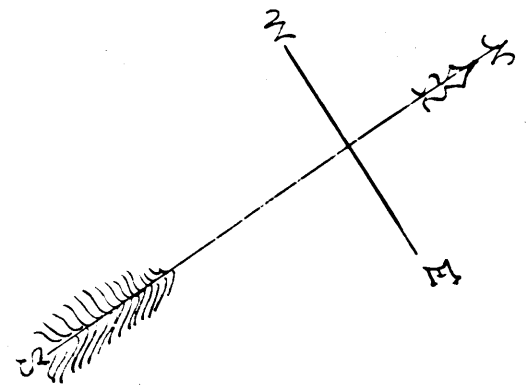


R.F.	39	
A7	OF	A10

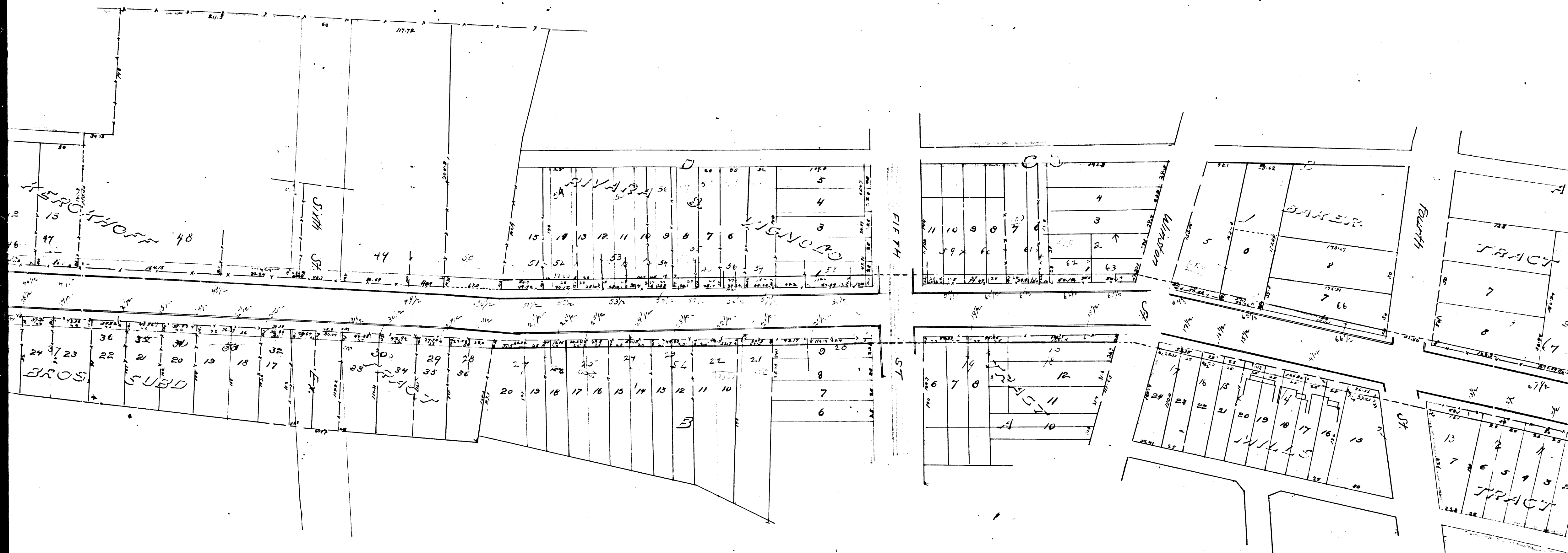
ES ST.

ERAVE.

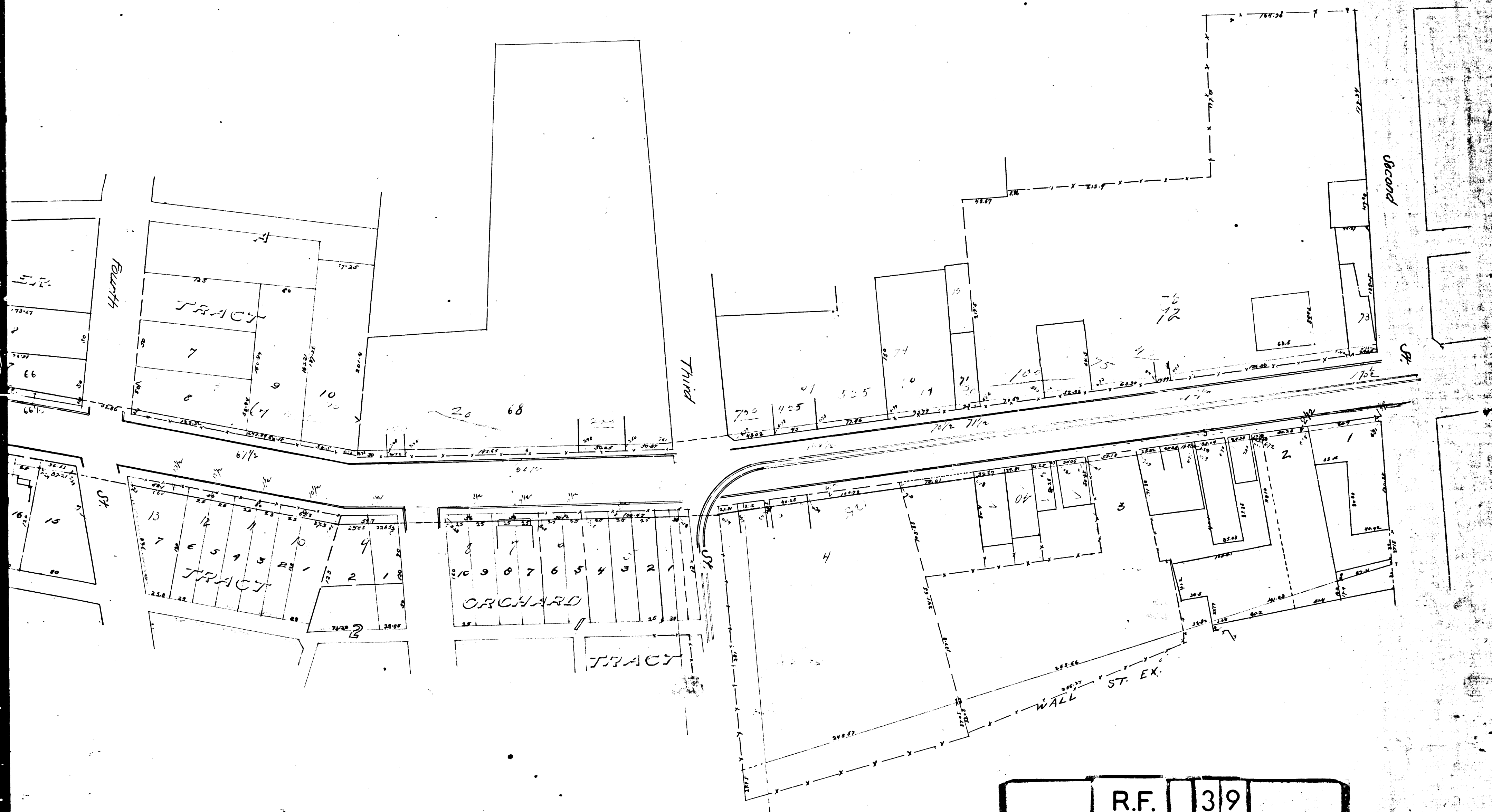
n, City Eng.



R.F. 39
A 8 OF A 10



R.F.	39	
A9	OF	A10



R.F.	39
A10	OF A10