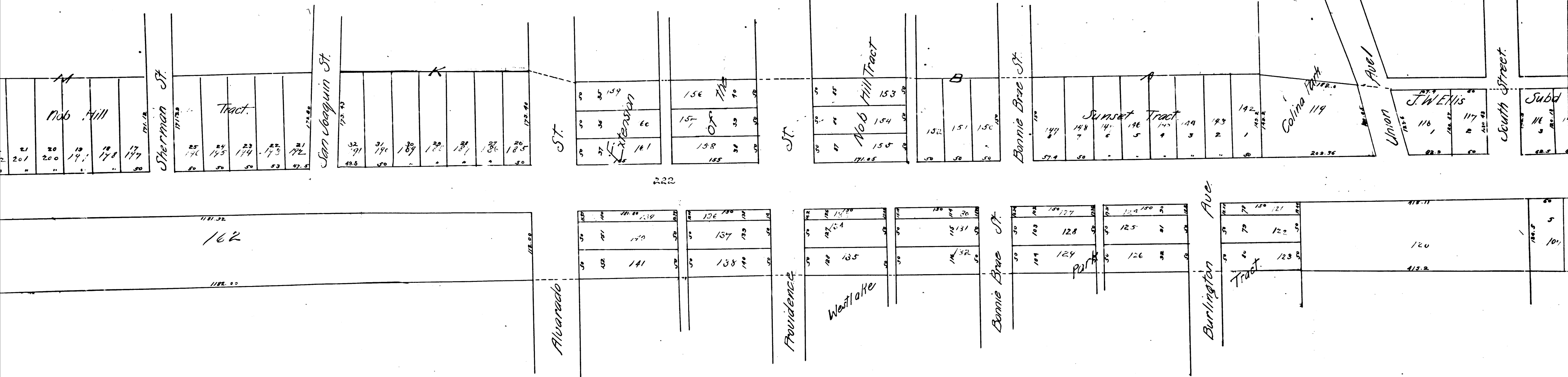
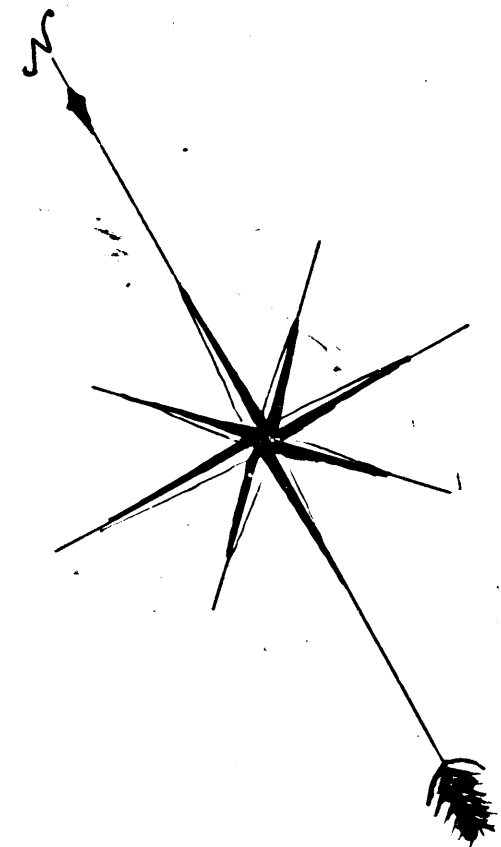


R.F.	40	
A1	OF	A4

ASSESSOR
 OPENING, WIDE
 ——— SIXTH
 PEARL ST. AND THE WE
 J.H. DICKMAN
 Scale



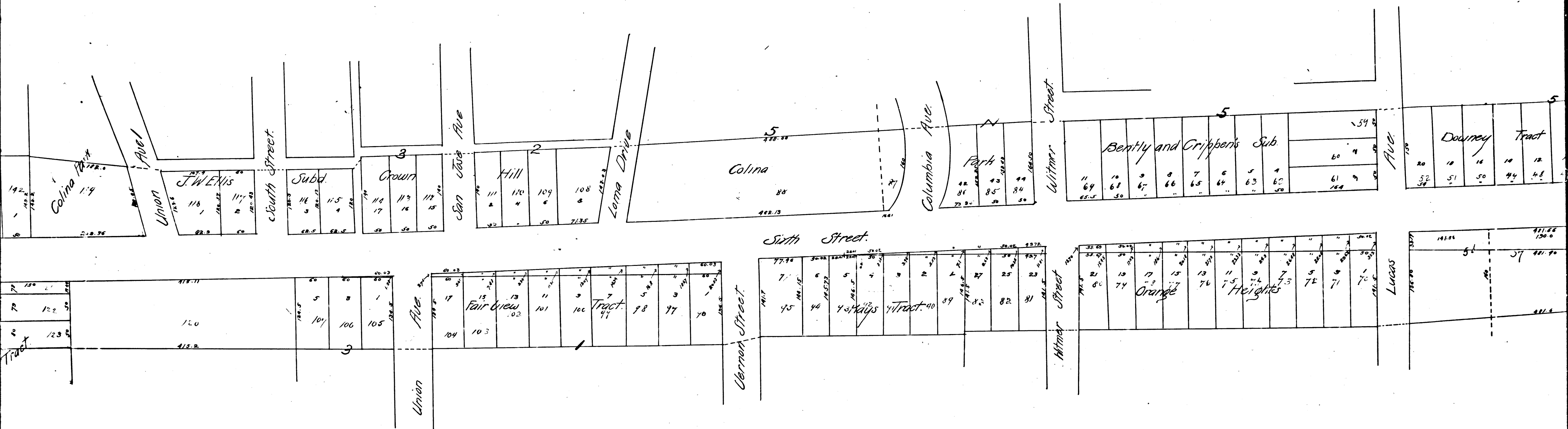
222

R.F. 40
 A 2 OF A 4

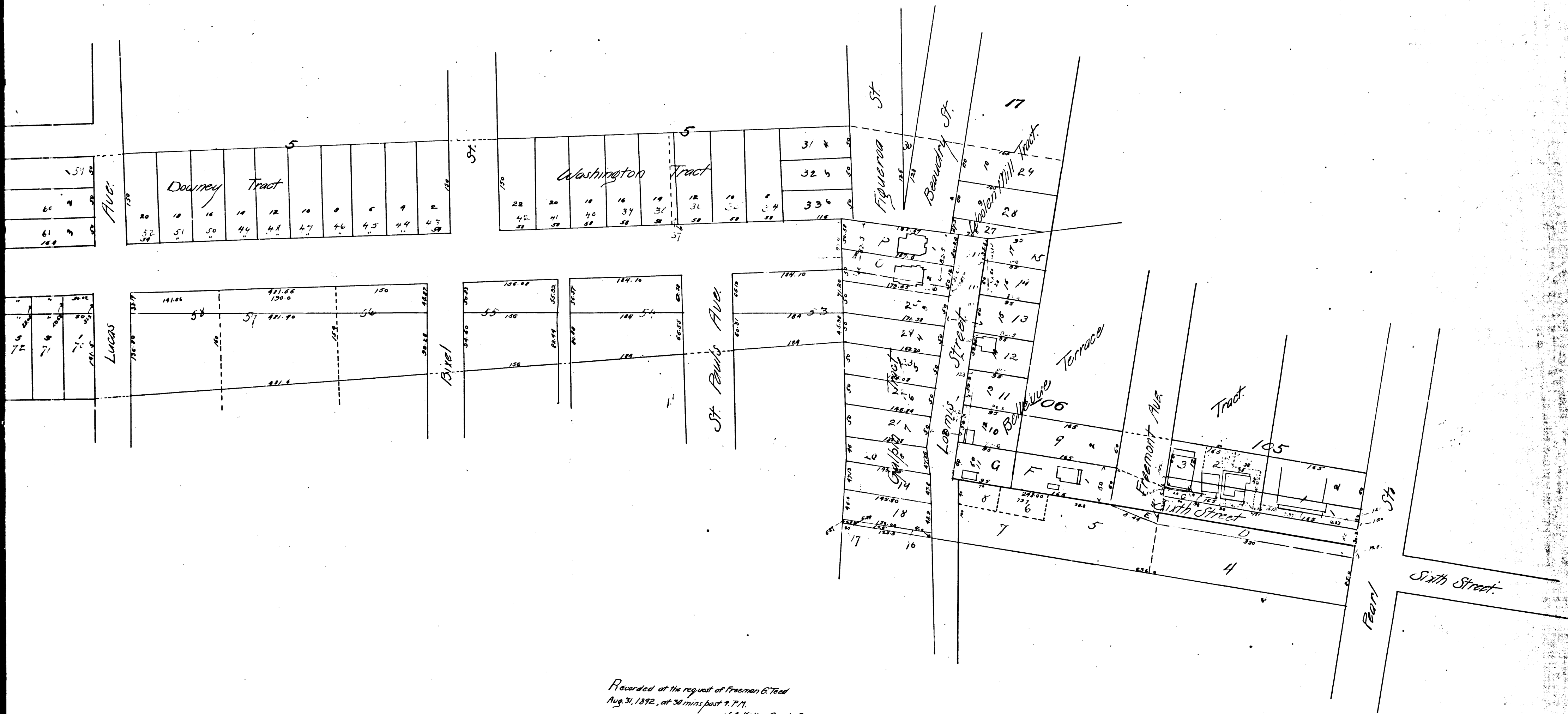
MAP
OF THE
ASSESSMENT DISTRICT
FOR THE
OPENING, WIDENING AND EXTENDING
OF
SIXTH STREET
BETWEEN
PEARL ST. AND THE WEST LINE OF THE GALPIN TRACT
J.H. DOCKWEILER-CITY ENG. MARCH 1892.

Scale; 100 ft. to 1 inch.

Exterior Boundaries of District of Assessment, thus
Land to be taken for Opening, Widening & Extending, thus



R.F. 40
A 3 OF A 4



Recorded at the request of Freeman E. Teed
 Aug. 31, 1892, at 30 mins past 9 P.M.
 J. A. Kelly, County Recorder.

R.F. 40
 A 4 OF A 4