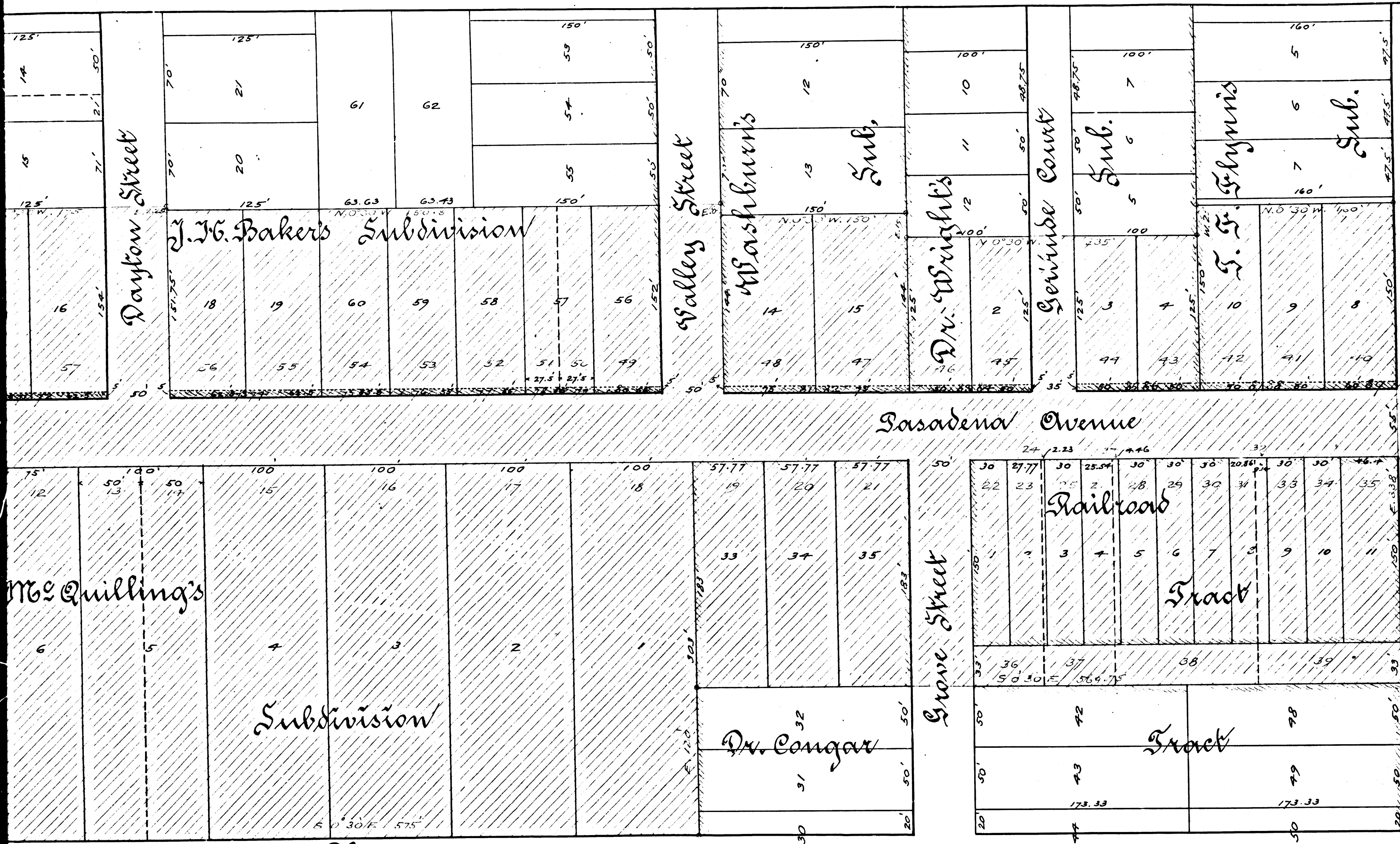


Showing the assessment district and the land to be taken for the widening of Basadena Avenue in the City of Basadena on its East side between the North line of Elevado Drive and the South line of Colorado Street, also showing the lands assessed and the relative location of each district, block, lot or portion of lot and its dimensions. Each block, lot or portion of lot taken or assessed is designated and described by the numbers marked thereon in red ink. Herein "To" is used for the word number, and "ft." for the word feet. The marks "and" mean respectively feet and inches. Figures in black ink next to property lines show each the length of said lines in feet. Other black figures show number of lots "Sub" is used for the word Subdivision. Grey shading shows the portions of land to be taken for the widening of said Avenue. A section-lining shows area covered by assessment district. Red figures and letters along the boundary of the assessment district denote length and direction of each course. The plat is drawn to a scale of 60 feet to one inch. June, 1894. W. B. Clapp, City

R.F. 42  
A1 OF A2





the assessment district and the land to be taken for the widening of Pasadena Avenue in Pasadena on its East side Between the North line of Elevation Drive and the South line of Slot, also showing the lands assessed and the relative location of each district, block, lot or portion and their dimensions. Each block, lot or portion of lot taken or assessed is designated and described by a number marked thereon in red ink. Herein "ft." is used for the word number, and "ft." for the word feet. "and" mean respectively feet and inches. Figures in black ink next to property lines show length of said lines in feet. Other black figures show number of lots "Sub" is used for the word Subdivision. Grey shading shows the portions of land to be taken for the widening of said Avenue. Red shading shows area covered by assessment district. Red figures and letters along the boundaries of assessment district denote length and direction of each course. The plat is drawn to a scale of 60ft.

June 1894. W. B. Clapp, City Engineer

State of California } S.S.  
 County of Los Angeles }  
 City of Pasadena }  
 I, Herman Dyer, Clerk of the City of Pasadena, do hereby certify the attached plat to be a full, true and correct copy of the plat of the Assessment District for the widening of Pasadena Avenue, from the South line of Colorado Street to the North line of Elevation Drive, as confirmed and adopted by the Board of Trustees of the City of Pasadena, on the 19th day of November 1894.

In testimony whereof, I have hereunto set my hand and affixed the corporate seal of said City, this 23rd day of November 1894.

Herman Dyer  
 Clerk of the City of Pasadena

Filed October 8th 1894  
 Herman Dyer, City Clerk  
 Confirmed and adopted by the Board of Trustees of the City of Pasadena, November 19th 1894, by resolution No. 635. Herman Dyer, Clerk of the City of Pasadena  
 Filed at the request of Herman Dyer  
 Nov 24th 1894, at 2:41 p.m. Recorder of the City

R.F. 42  
 A 2 OF A 2