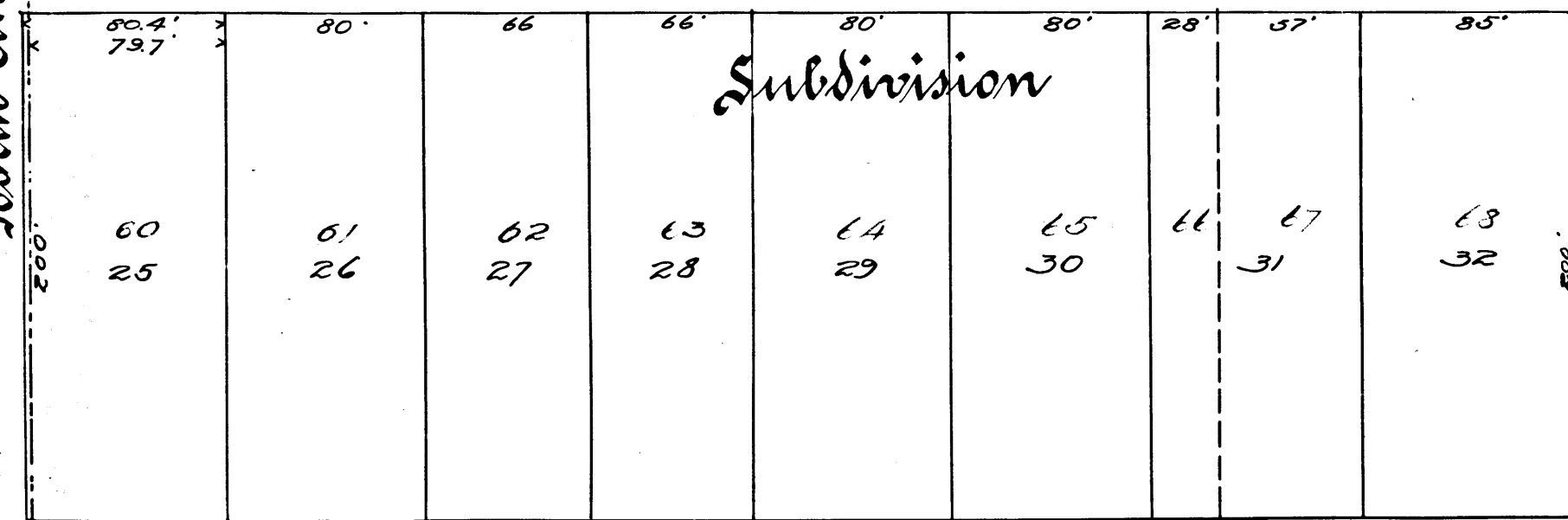
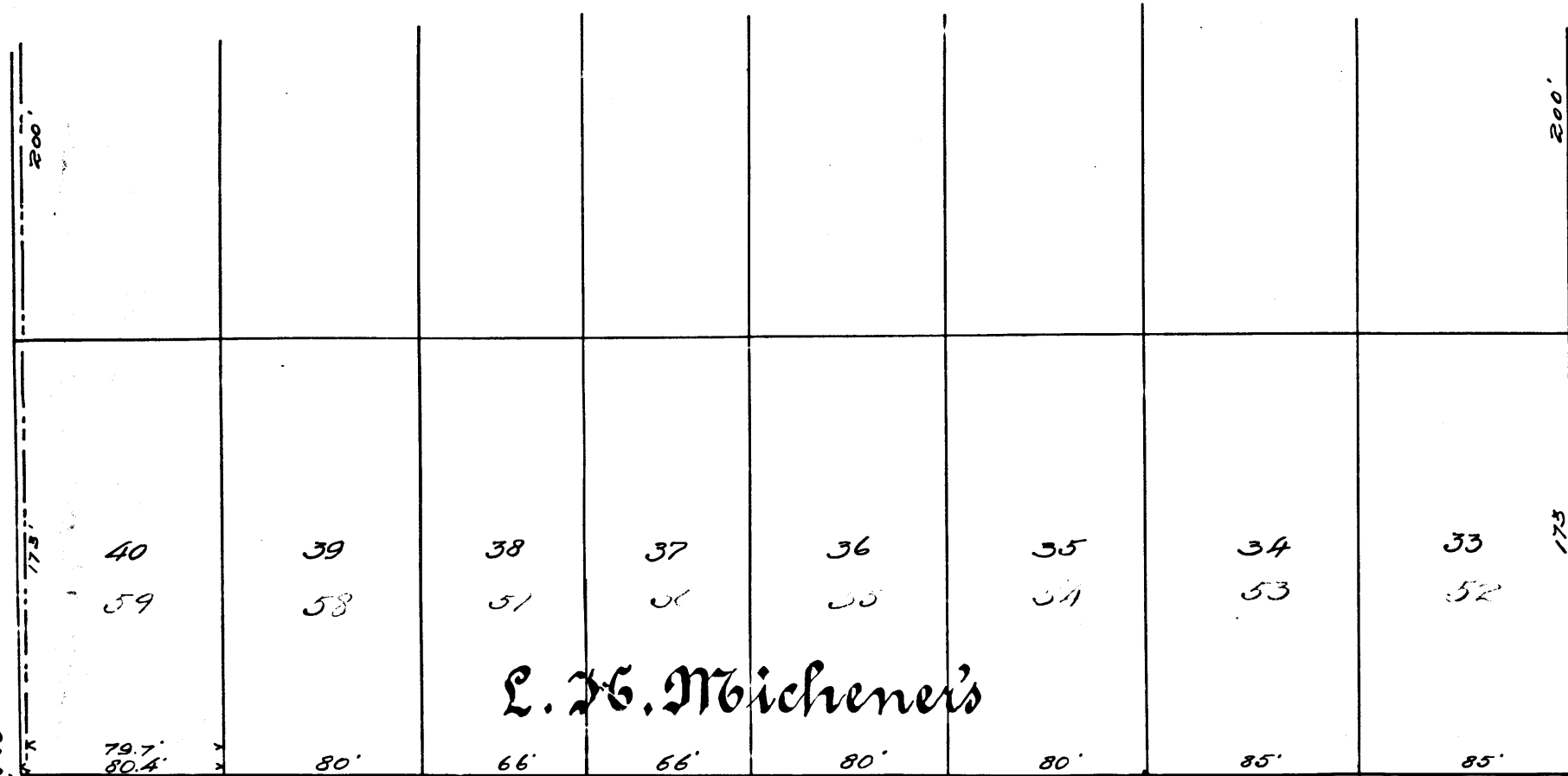


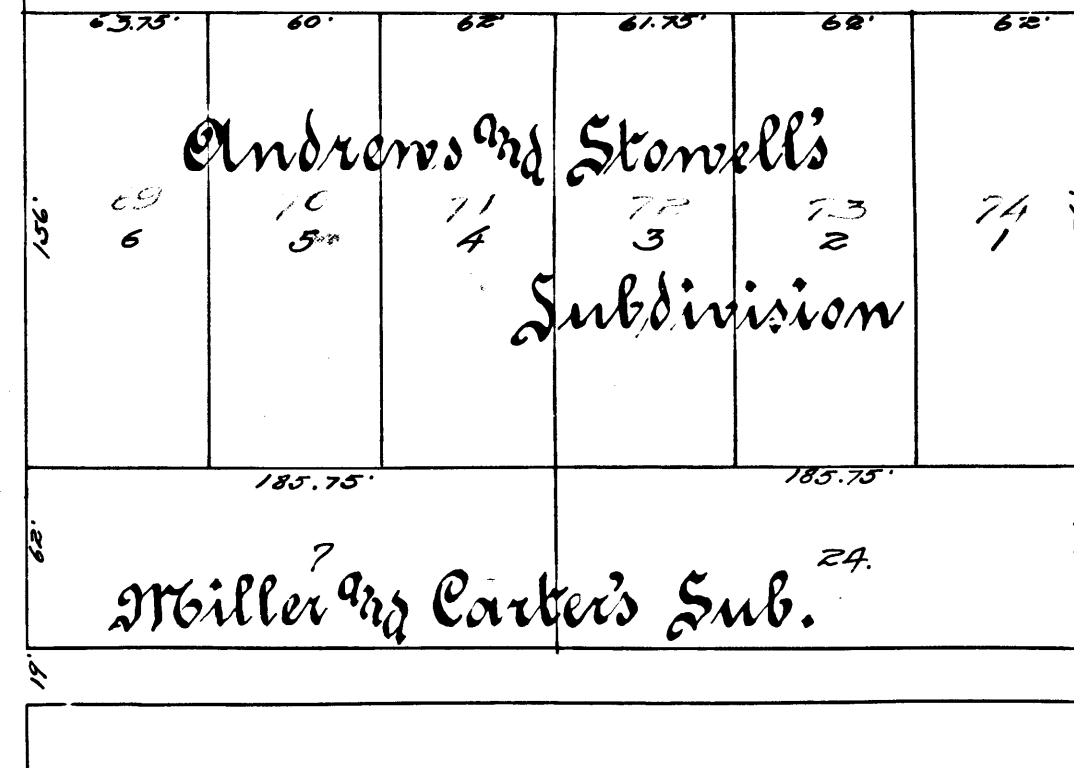
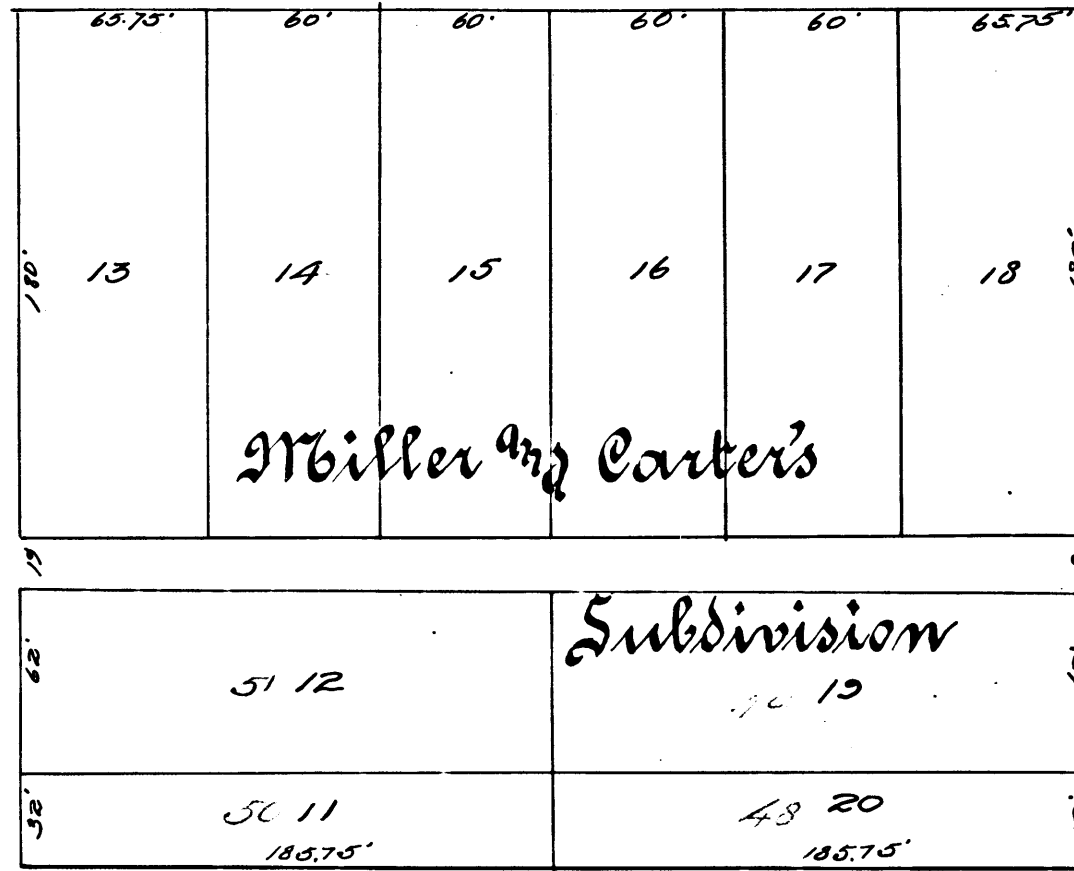
North City Limits



Index # 8

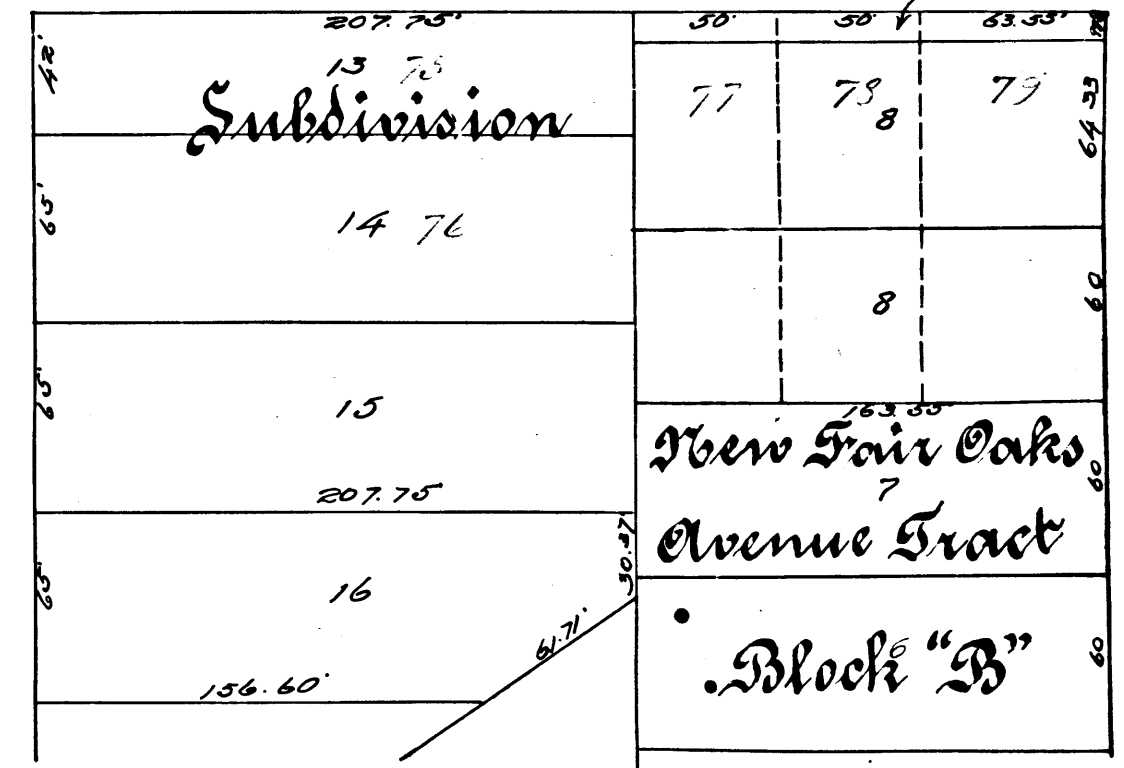
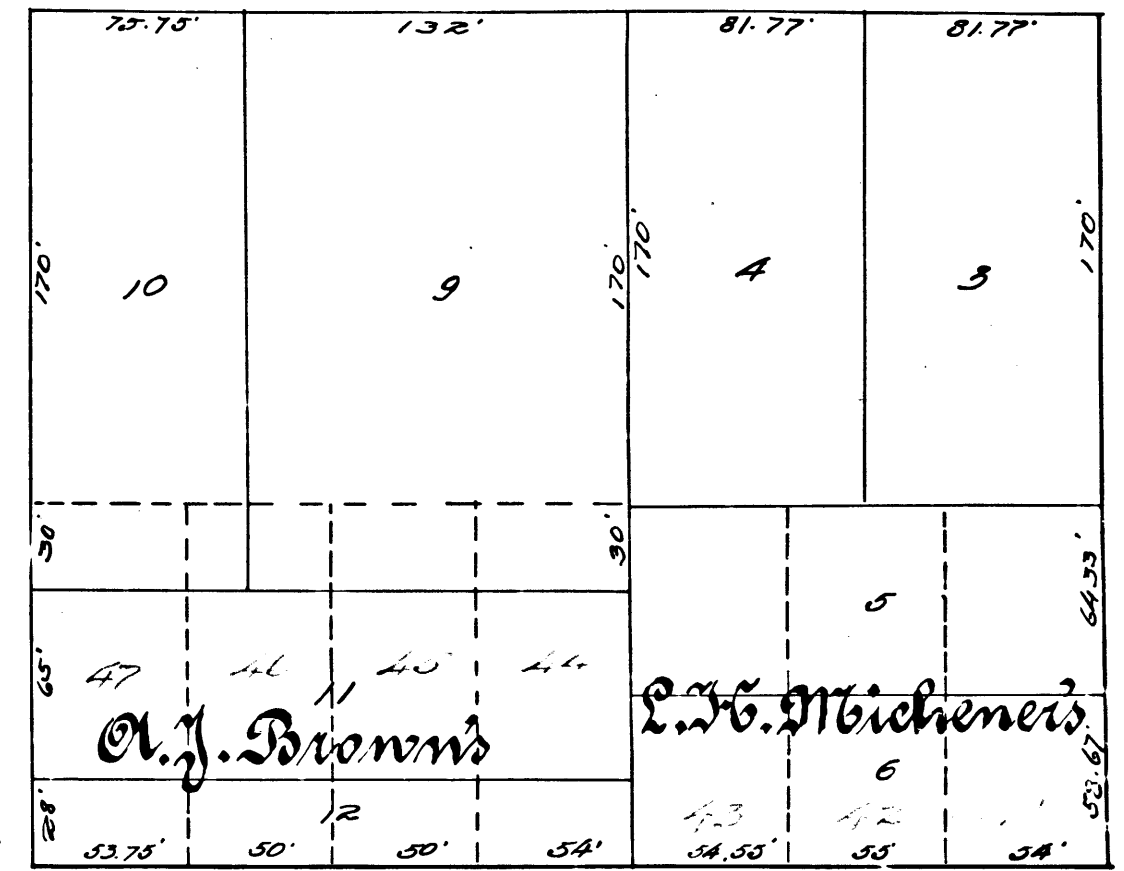
Street

Illinois

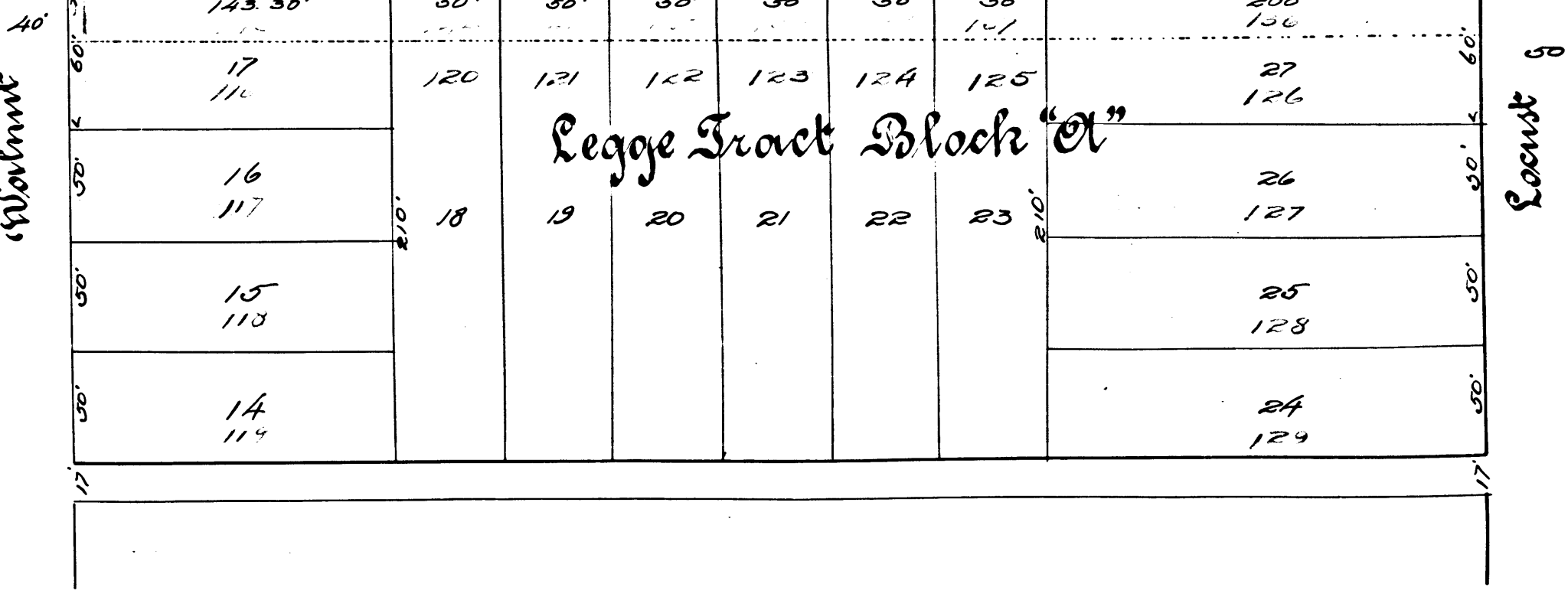
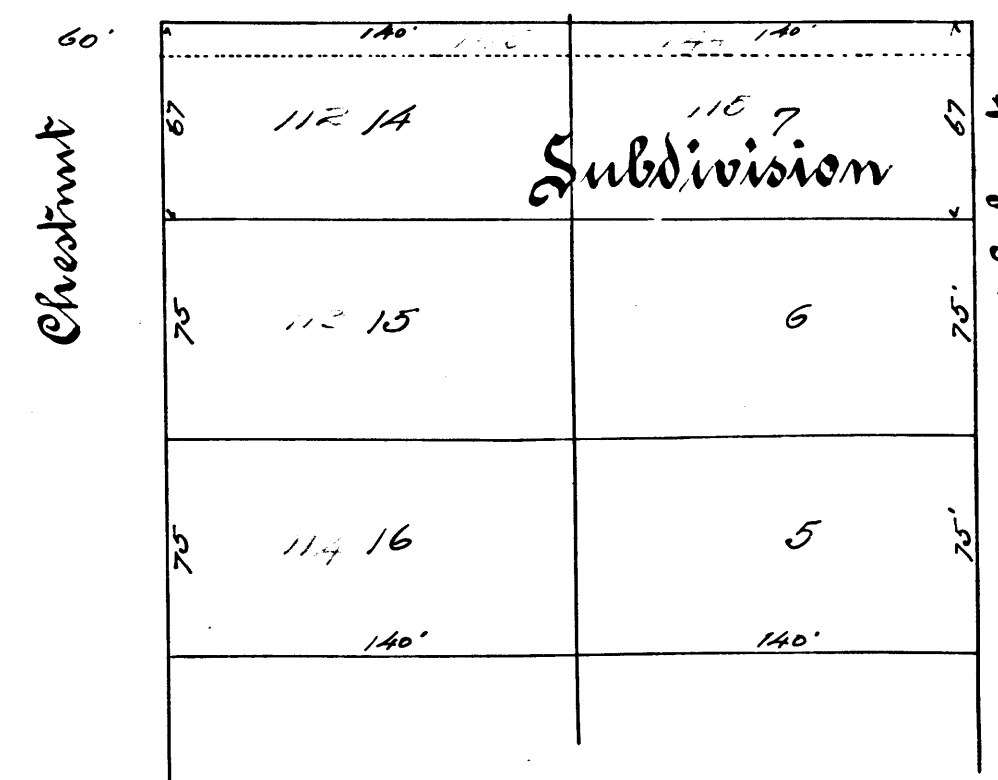
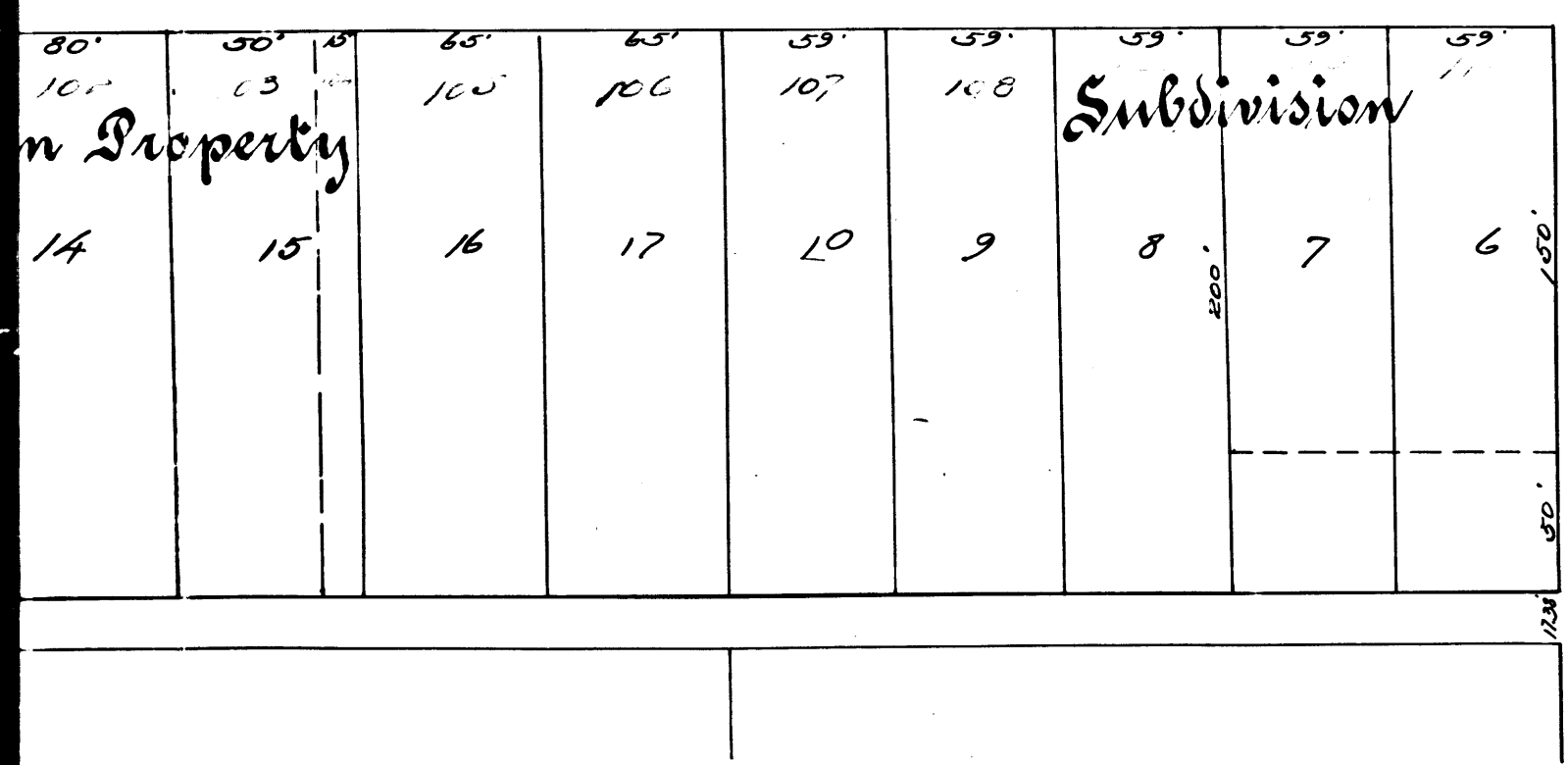
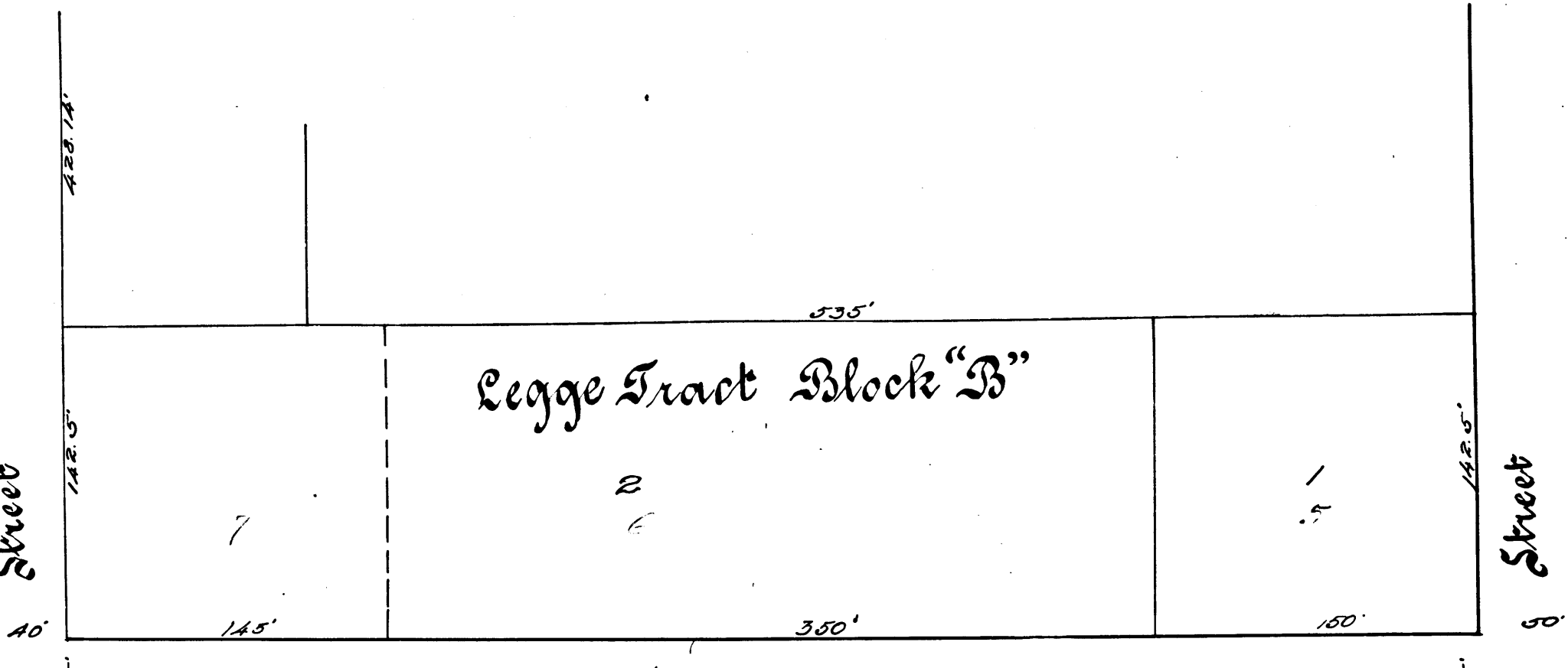
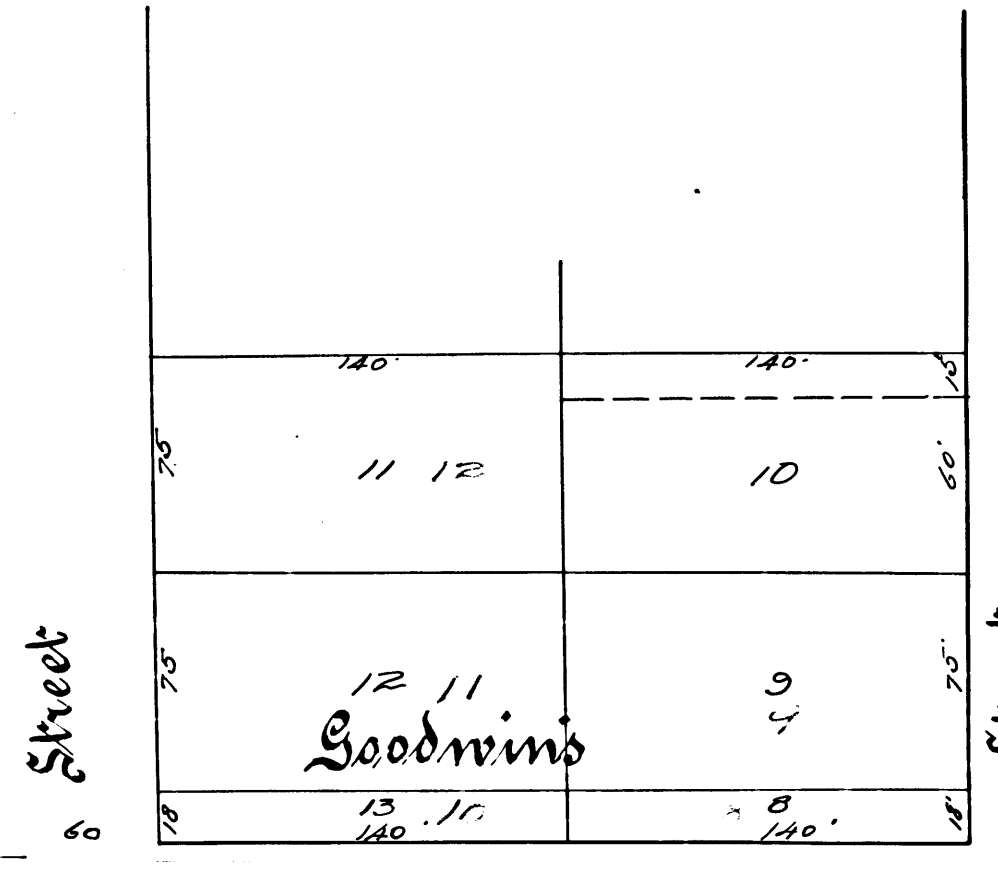
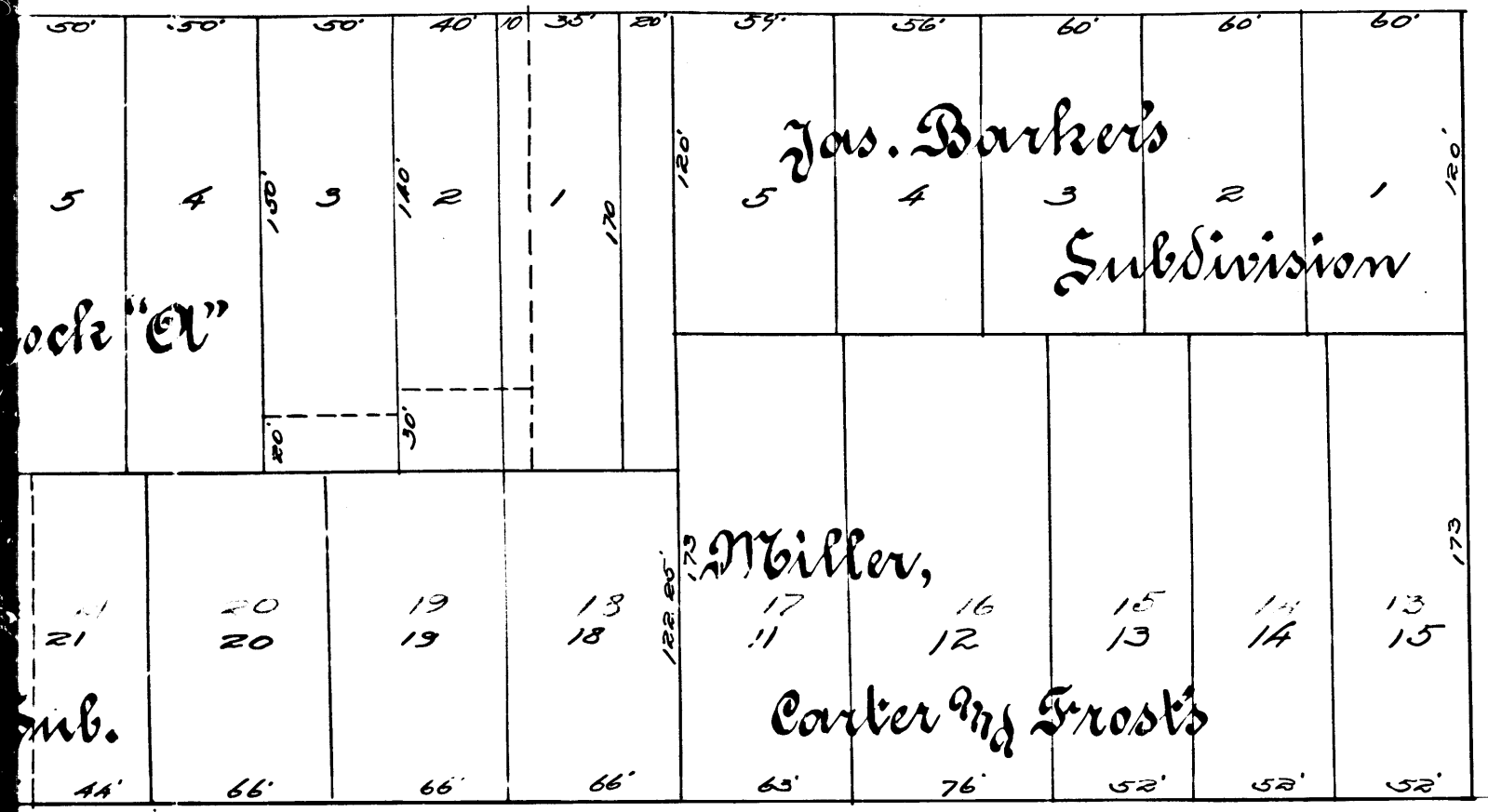


Street

Deoria



R.F. 43
 A1 OF A4



R.F. 43
A 3 OF A 4



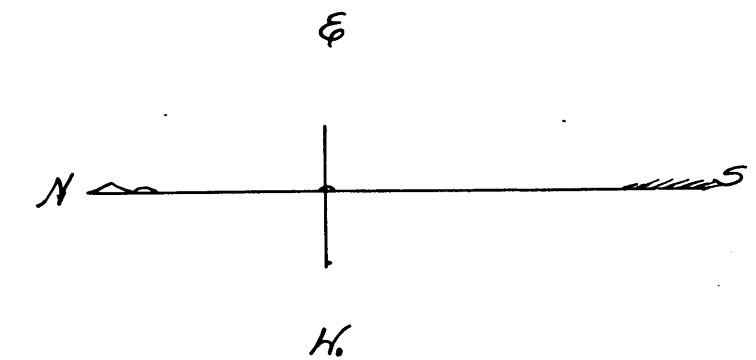
Index #8 Diagram

Exhibiting Raymond Avenue and its intersecting streets from the North line of Colorado Streets to the North City limits in the City of Pasadena and showing the assessment district and the land to be taken for the widening of said Raymond Avenue from the North line of Locust Street to South line of Chestnut Street, also showing the lands assessed and the relative location of each district, block, lot or portion of lot or parcel of land and its dimensions Each district, block, lot, or portion of lot or parcel of land taken or assessed is designated and described by the numbers marked thereon in red ink

Herein the mark, means feet, Figures in black ink next to property lines show the length of said line in feet. Other figures in black ink show the numbers of the lots. Continuous black lines mean original property lines. Broken black lines mean subdivisions of original lots. Colored shadings show the boundaries of subdivisions named. Red bordering shows the assessment district. Green border shows the land to be taken for the widening of said Avenue. The diagram is drawn to a scale of 60 feet to one inch

Pasadena Cal
August, 1895

H. B. Clapp,
City Engineer.



Filed January 15th 1896.

Confirmed and adopted by the Board
of Trustees of the City of Pasadena.
Jan. 6th 1896
Herman L. Lutz
Clerk of the City of Pasadena.

