

Map
 Showing Land to be taken and District of Assessment
 For the opening of

PARK GROVE AVENUE

FROM
 23rd Street to the Present North termination of said Park Grove Ave.
 as laid out in St. James Park.

City of Los Angeles Cal.

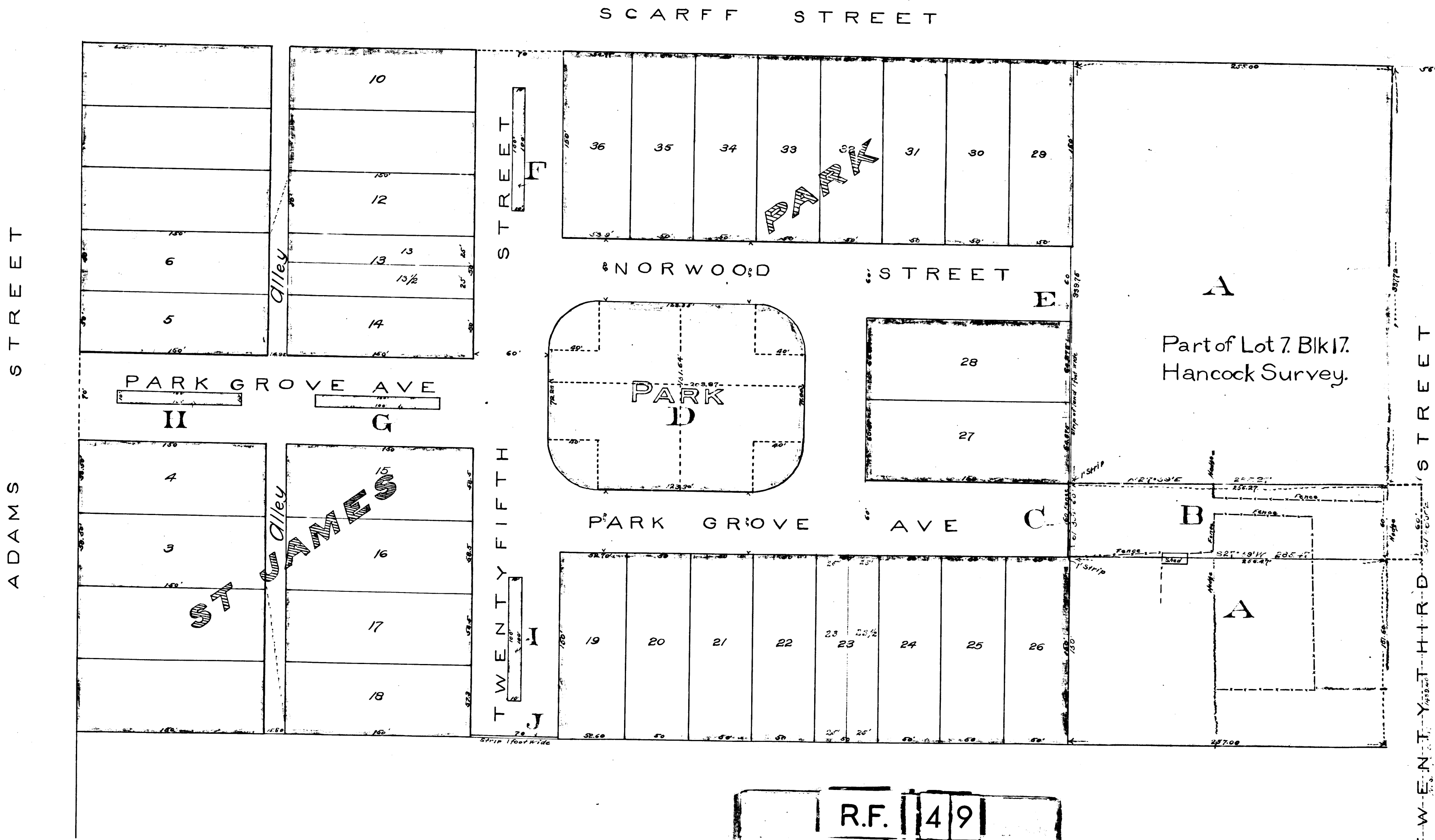
J.H. Dockweiler City Engineer
 July 1898

FILED Dec. 3, 1898
 at 10 Min past 1 P.M.

Scale 1 inch = 50 feet.

Note
 Red color shows land to be taken
 Green color shows exterior boundaries
 of district of assessment.

Ordinances N^o 5119 and 5216 (New Series)



R.F. 49