

Filed at the request of
C. A. Luckenbach, Feb. 5, 94.

Arthur Bray County Recorder.

MAP

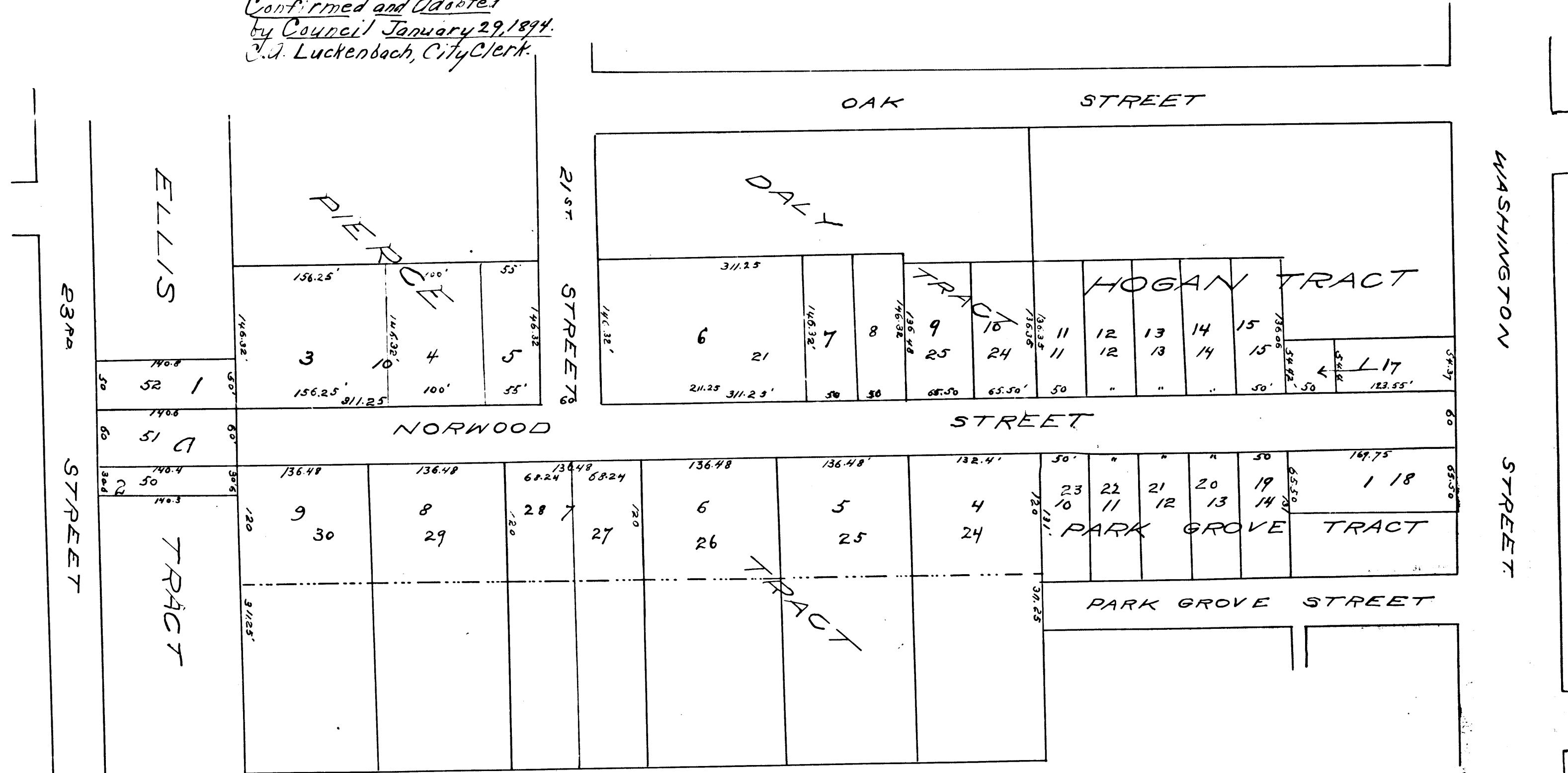
SHOWING THE ASSESSMENT DISTRICT FOR THE EXTENSION OF NORWOOD STREET

INTO TWENTYTHIRD STREET
IN THE
CITY OF LOS ANGELES; CAL.

Dec. 1893 J. H. Dockweiler, City Engineer

Scale; 1" = 100 FT.

Filed Dec. 19th 1893
C. A. Luckenbach, City Clerk.
Confirmed and Adopted
by Council January 29, 1894.
J. J. Luckenbach, City Clerk.



R.F. 51