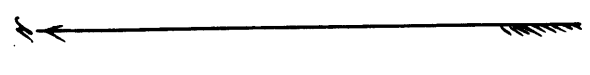
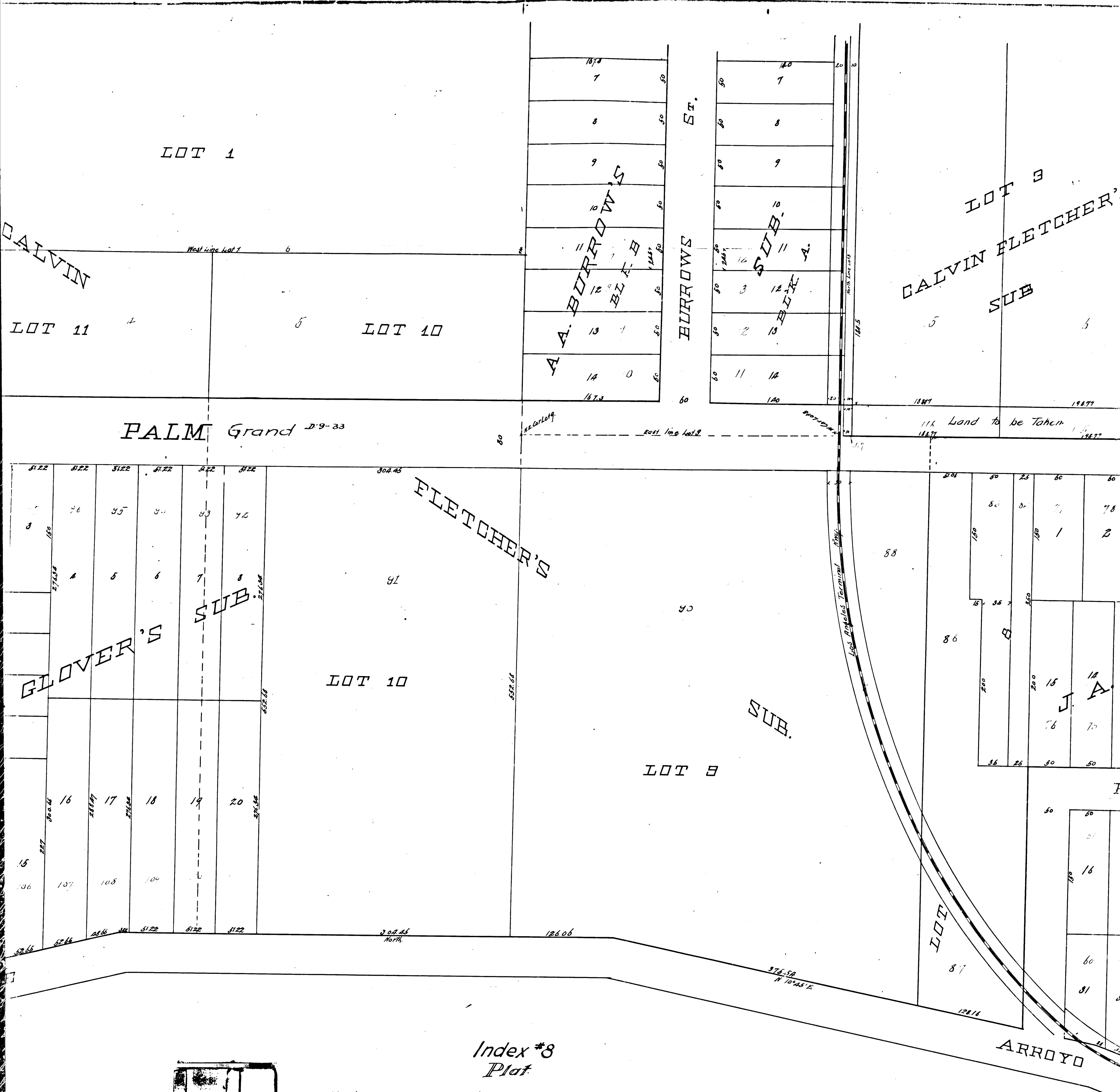




Index #8

R.F.		53	
A 1		OF A 3	





CALVIN

LOT 1

LOT 11

LOT 10

PALM Grand 21-9-33

A. BURROWS  
BLK. B

BURROWS ST.

SUB. A

LOT 3  
CALVIN FLETCHER'S  
SUB

GLOVER'S

SUB.

LOT 10

FLETCHER'S

SUB.

LOT 8

LOT

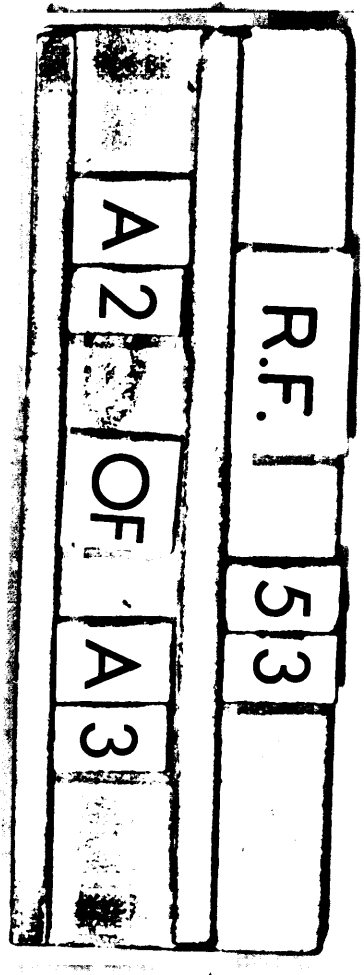
ARROYO

Index #8  
Plat

Showing the Assessment District and the land to be taken for the widening of Palm Avenue across Lots 3 and 6 of Calvin Fletcher's Subdivision in the City of South Pasadena; also showing the relative location of each district, block, lot, portion of lot or parcel of land and its dimensions.

Hereon;  
Each block, lot, or portion of lot taken or assessed is designated by the number marked thereon in red; Black lines show property lines; Black figures next to property lines show the length of said lines in feet; Other black figures show the numbers of the lots; Brown and yellow shadings show the boundaries of the subdivisions named; Red shading shows the boundary of the assessment district; Blue shading shows the boundary of the land to be taken; The abbreviations Sub. and Blk. mean respectively subdivision and Block, Ave. and St. mean respectively Avenue and Street.

Scale 60 ft to 1 inch.



South Pasadena

California  
Dec. 5, 1891

J. D. Allen  
City Eng.

LOT 3  
CALVIN FLETCHER'S  
SUB

OAK PLACE

LOCKWOOD  
2ND  
DRIVE

TRACT  
RE-PLAT

LOCKWOOD  
12BLK A  
TRACT

ST.

AVE.

J. A. GATES

MAGNOLIA

LOT 6  
CALVIN FLETCHER'S  
SUB.

FOREST AVE

SUB

MISSION

ARROYO DRIVE

R.F. 53  
A3 OF A3

Filed at req. City Clerk of Pasadena  
May 11, 1897

Index #8

