

MAP  
OF THE  
ASSESSMENT DISTRICT  
FOR THE WIDENING OF

SEVENTH ST

BETWEEN  
HOOVER ST. and VERMONT

Scale 60 ft to 1 inch

Exhibit "A"

Filed Jun. 18, 1897.  
Confirmed & adopted by the council  
Nov 1st 1897

N.  
S

28	27	26	25	24	23	22	21	20	19	18	17	16	15	14	13	12	11	10	9
39	38	37	36	35	34	33	32	31	30	29	28	27	26	25	24	23	22	21	20
7149	.138	.137	.136	.135	.134	.133	7132	729131	498130	50.25	60.25	.127	.126	.125	.124	.123	.122	589° 57'	15" N. E 39'

Seventh

75	74	73	72	71	70	69	68	67	66	65	64	63	62	61	60	59	58	57	56	55
36	35	34	33	32	31	30	29	28	27	26	25	24	23	22	21	20	19	18	17	16
7475	7470	7260	72	71	70	69	68	67	66	65	64	63	62	61	60	59	58	57	56	55

R.F. 57  
A 1 OF A 2

VERMONT



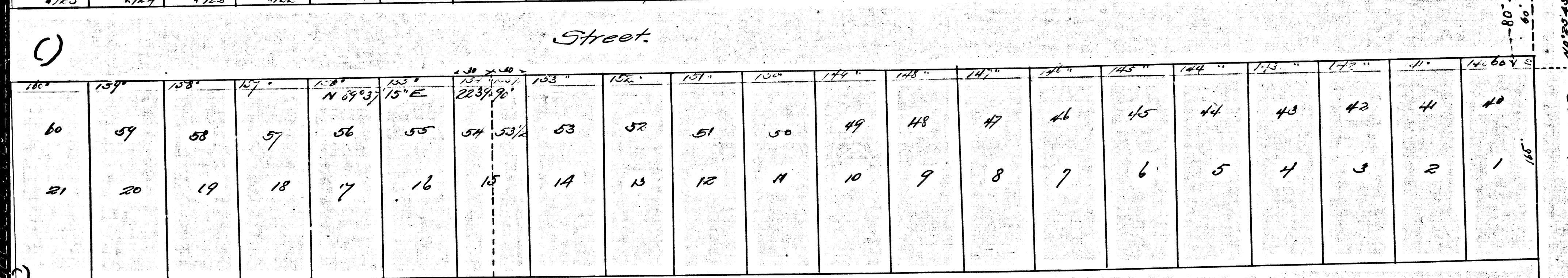
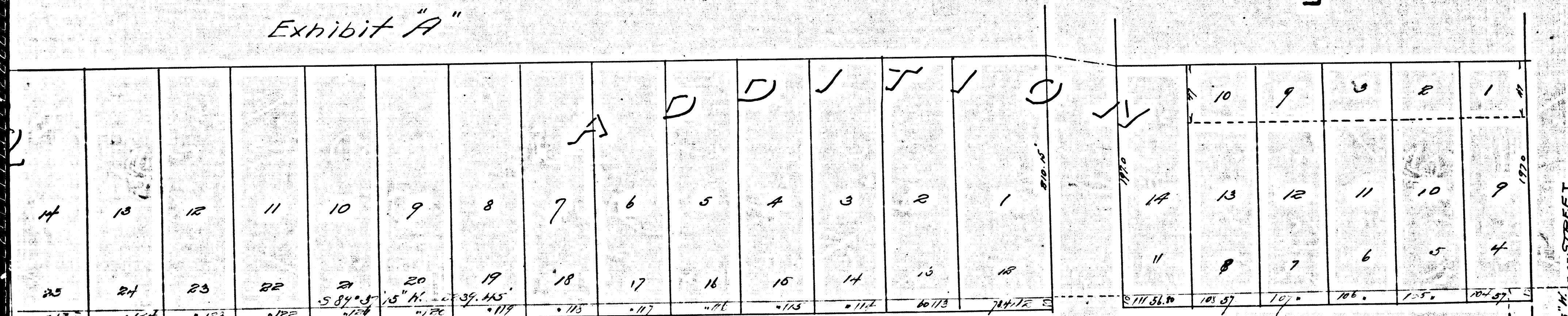
MAP  
OF THE  
ASSESSMENT DISTRICT  
FOR THE WIDENING OF

EVENTH STREET

BETWEEN  
HOOVER ST. and VERMONT AVE

Scale 60 ft to 1 inch

Exhibit "A"



R.F. 57  
A 2 OF A 2

Filed Mar 6th, 1897