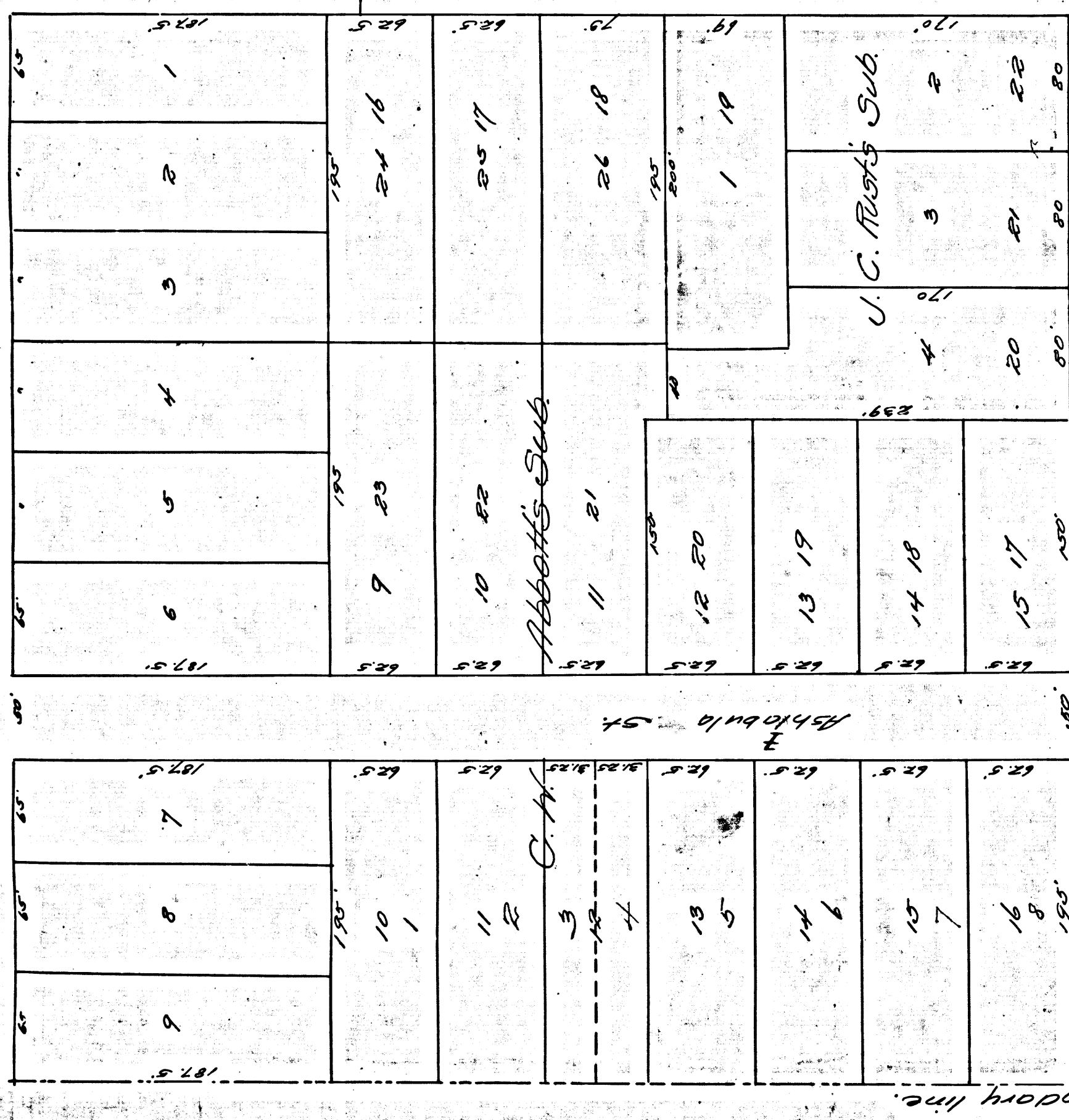
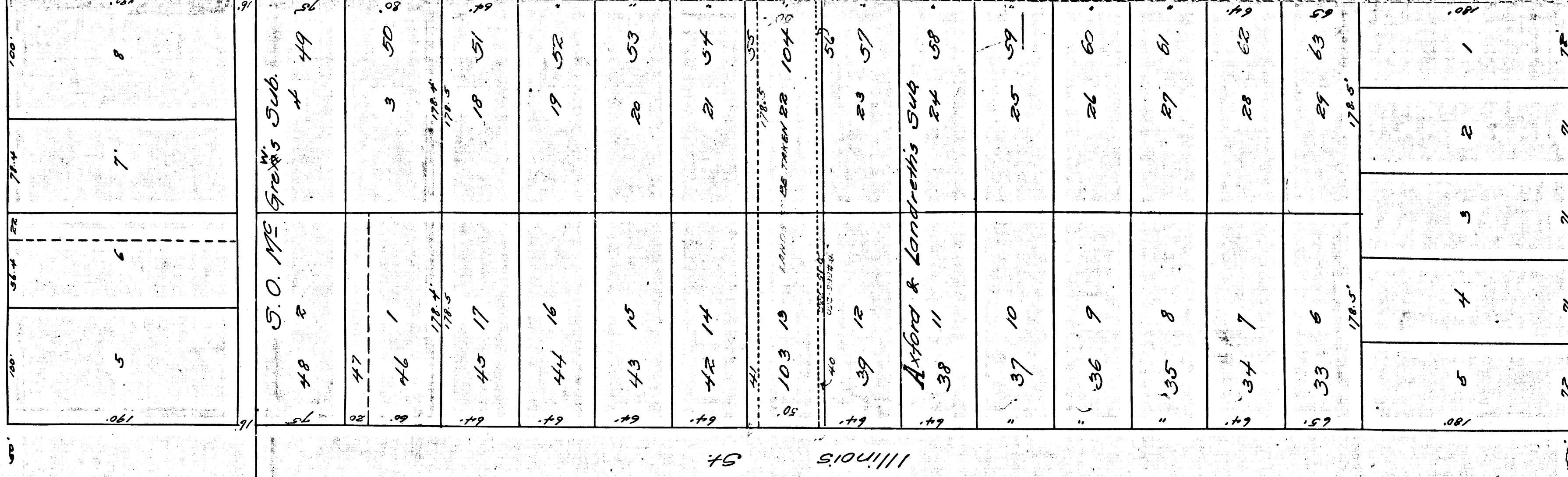
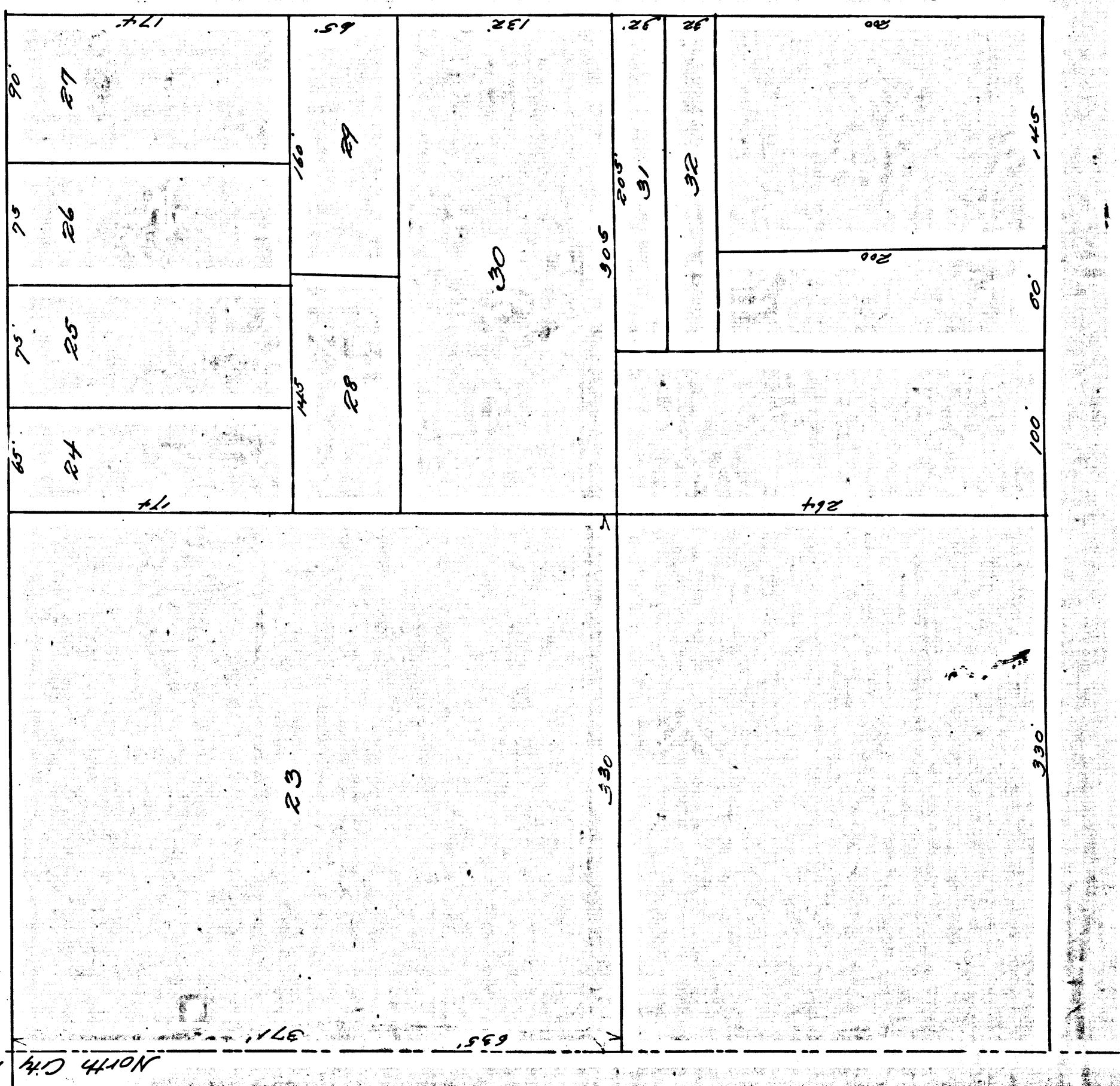


Los Robles



Ashkuba 57



Garfield Avenue

Illinois

R.F. 59  
A1 OF A2

Filed Nov 25 1896

Orange

A 2 OF A 2 R.F. 59

Index #8

Diagram.

Showing the assessment district & the land to be taken for the extension of Garfield Ave. in the City of Pasadena from Illinois St. to Brite St., also showing the lands assessed & the relative location of each district block, lot, portion of lot or parcel of land and its dimensions each block, lot or portion of lot when or assessed, as designated and described by the number marked there on, in red ink.

Herein the mark '1' means 'feet'. Figures in black ink next to property lines show each the length of said line in feet. Other black figures show the numbers of the lots. Continuous black lines show original lot lines, broken black lines show subdivisions of original lots. Blue and yellow shadings show the boundaries of subdivisions named. Red shading shows the boundaries of the assessment district. Green shading shows the boundaries of lands to be taken. The diagram is drawn to a scale of 60 feet to one inch.

M.B. Clapp  
City Engineer.

Pasadena Cal

Confirmed and adopted by Resolution No. 909 of the Board of Trustees of the City of Pasadena Nov. 16th 1916

