

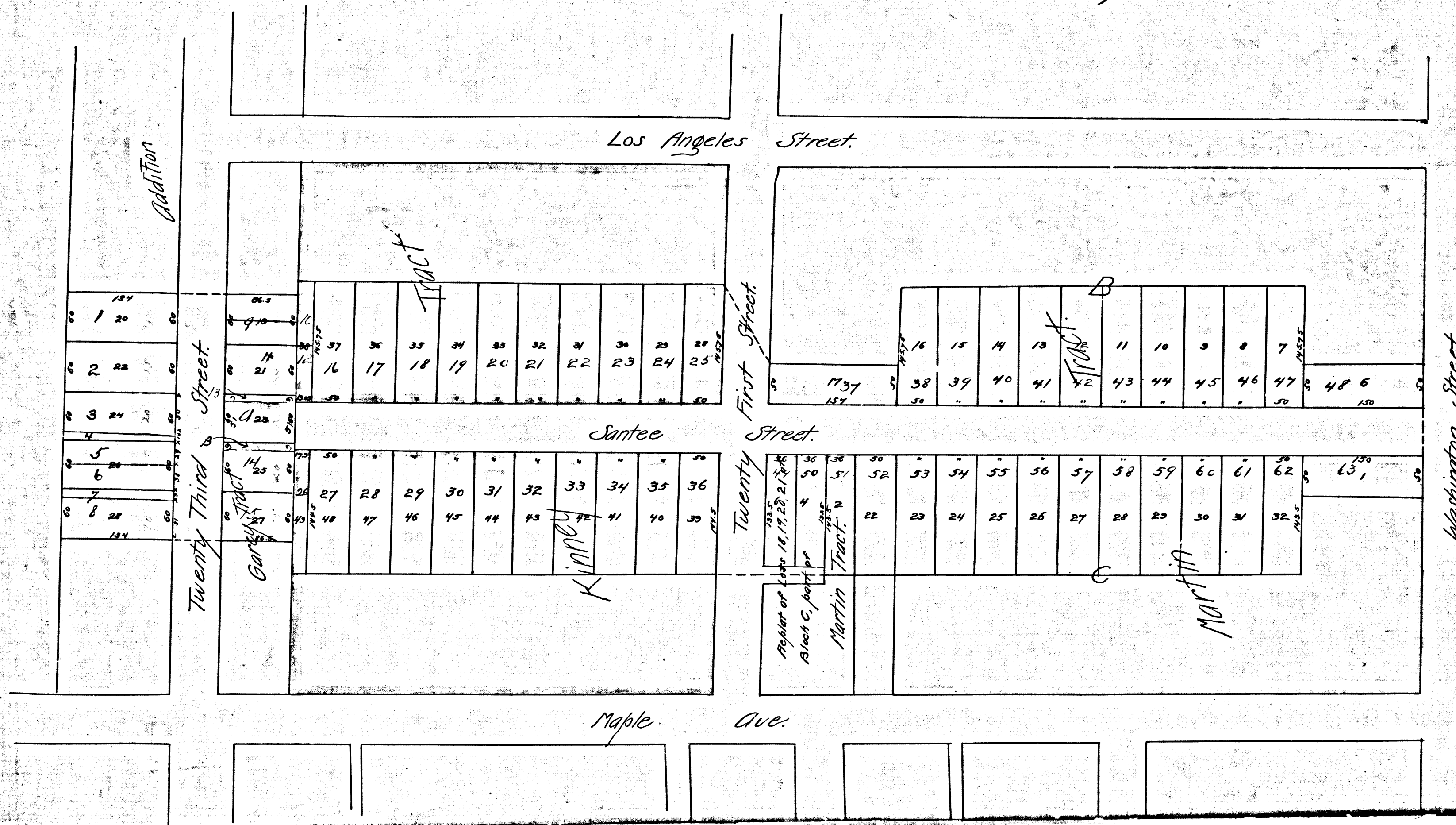
MAP
OF THE
ASSESSMENT DISTRICT
FOR THE OPENING OF
SANTEE STREET
BETWEEN
TWENTYFIRST AND TWENTYTHIRD STREETS

SCALE - 100 FT TO 1 INCH
C.S. COMPTON CITY ENG, MAY, 1895

Exhibit 'A'

Filed at request of City Clerk
July 5, 1895, at 3:35 mins past 2 P.M.
E.C. Hodgeman
County Recorder

Pencil lines on original are here shown in green ink.



Approved
Jul. 5, 1895
C. F. W.

R.F. 62