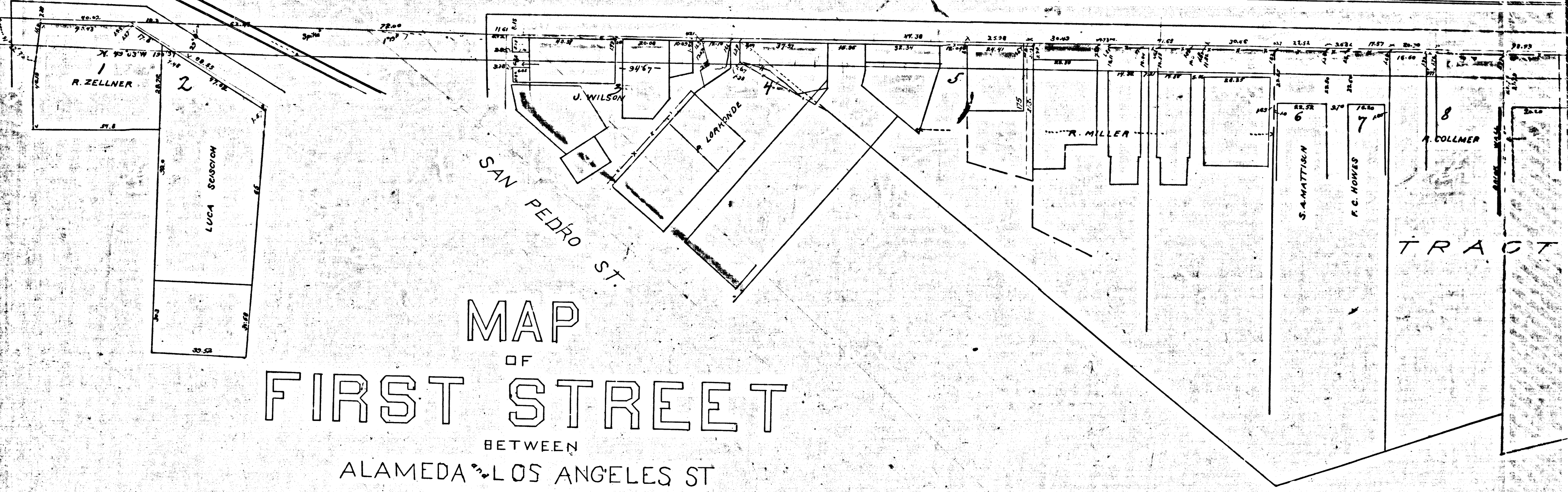
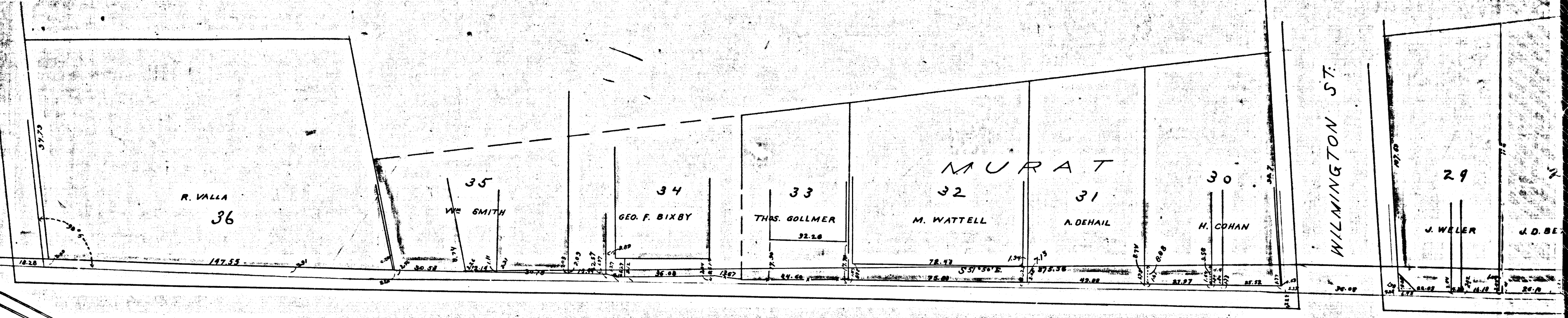


ST.

LOS ANGELES

WILMINGTON ST.

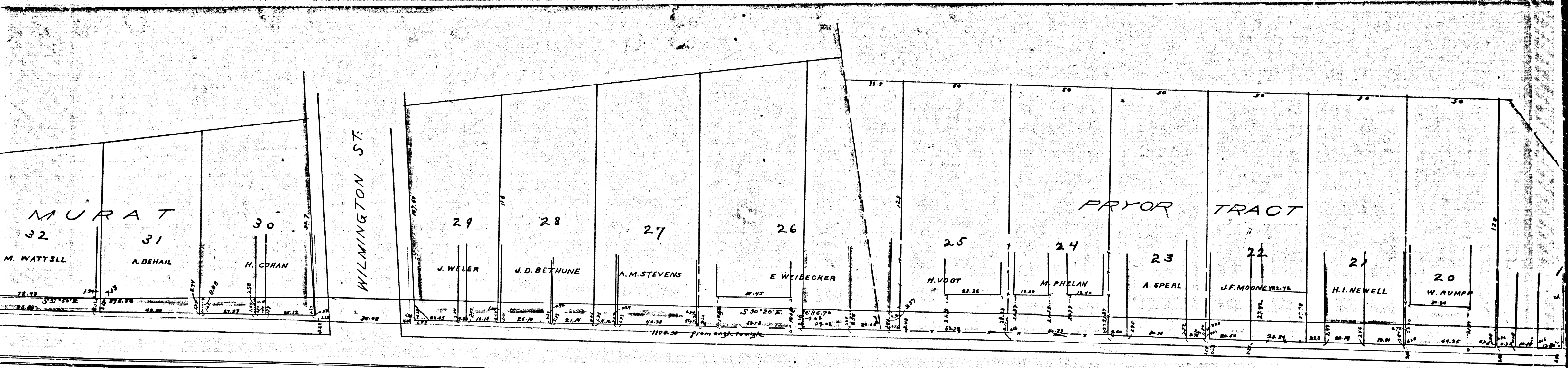


MAP  
OF  
FIRST STREET

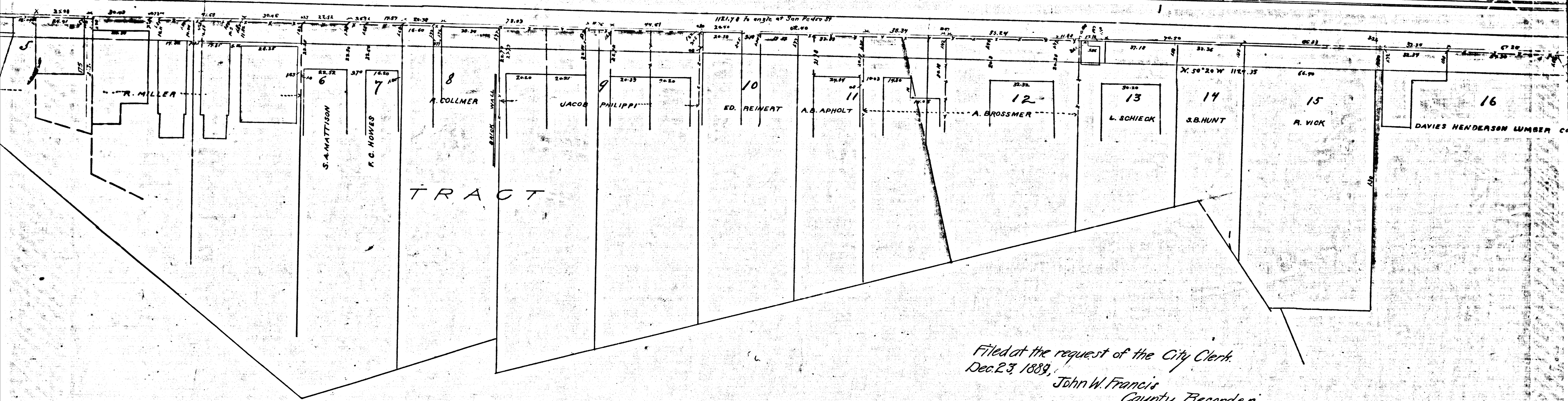
BETWEEN  
ALAMEDA & LOS ANGELES ST

Scale 30 feet to one inch.  
Exhibit A

	R.F.	64	
	A1	OF	A3

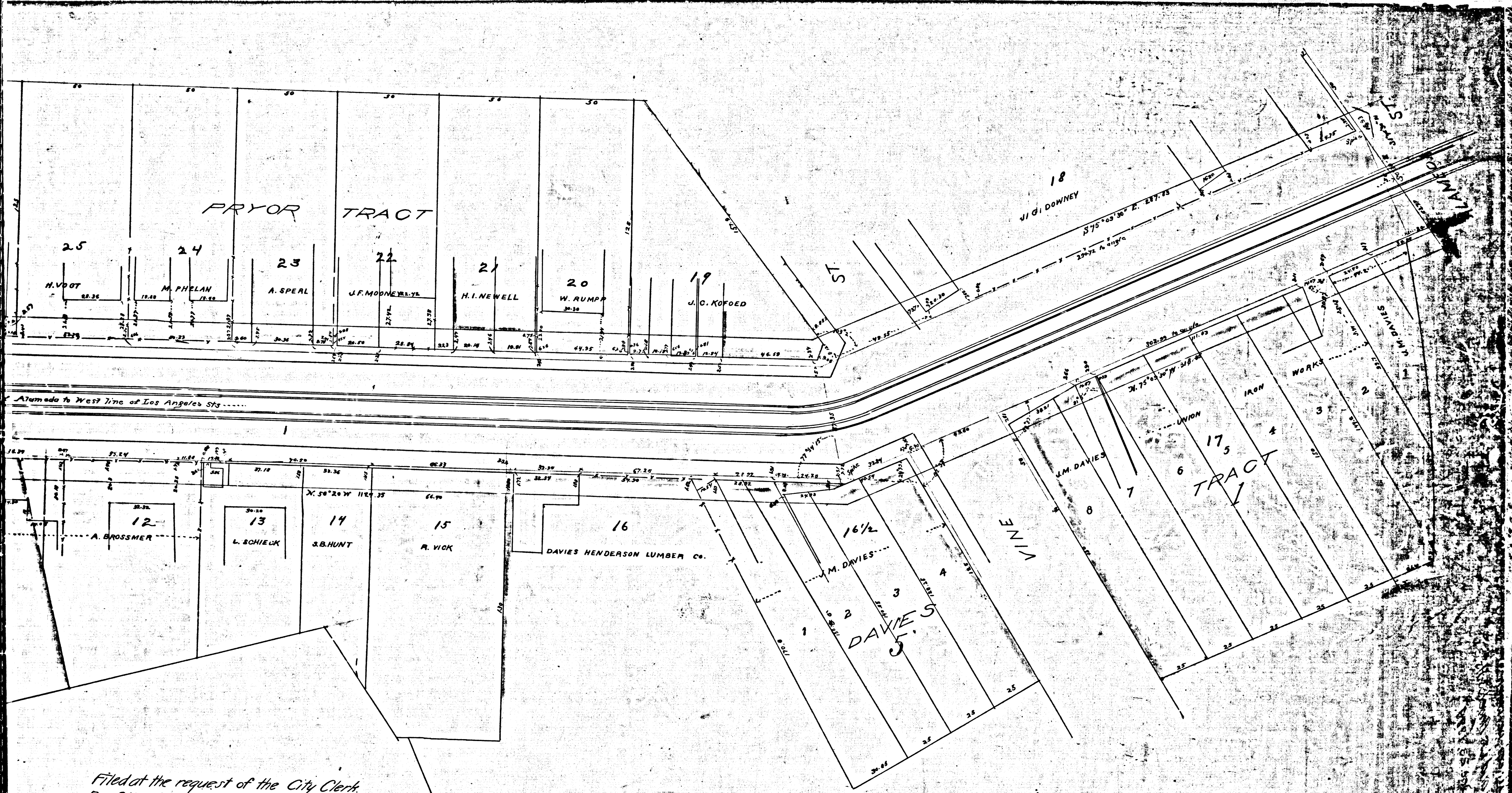


1618.25 From West line of Alameda to West line of Los Angeles St.



Filed at the request of the City Clerk.  
 Dec. 23, 1889,  
 John W. Francis  
 County Recorder.

R.F. 64  
 A2 OF A3



Filed at the request of the City Clerk.  
 Dec. 23, 1889.  
 John W. Francis  
 County Recorder.

R.F.	64
A 3	OF A 3