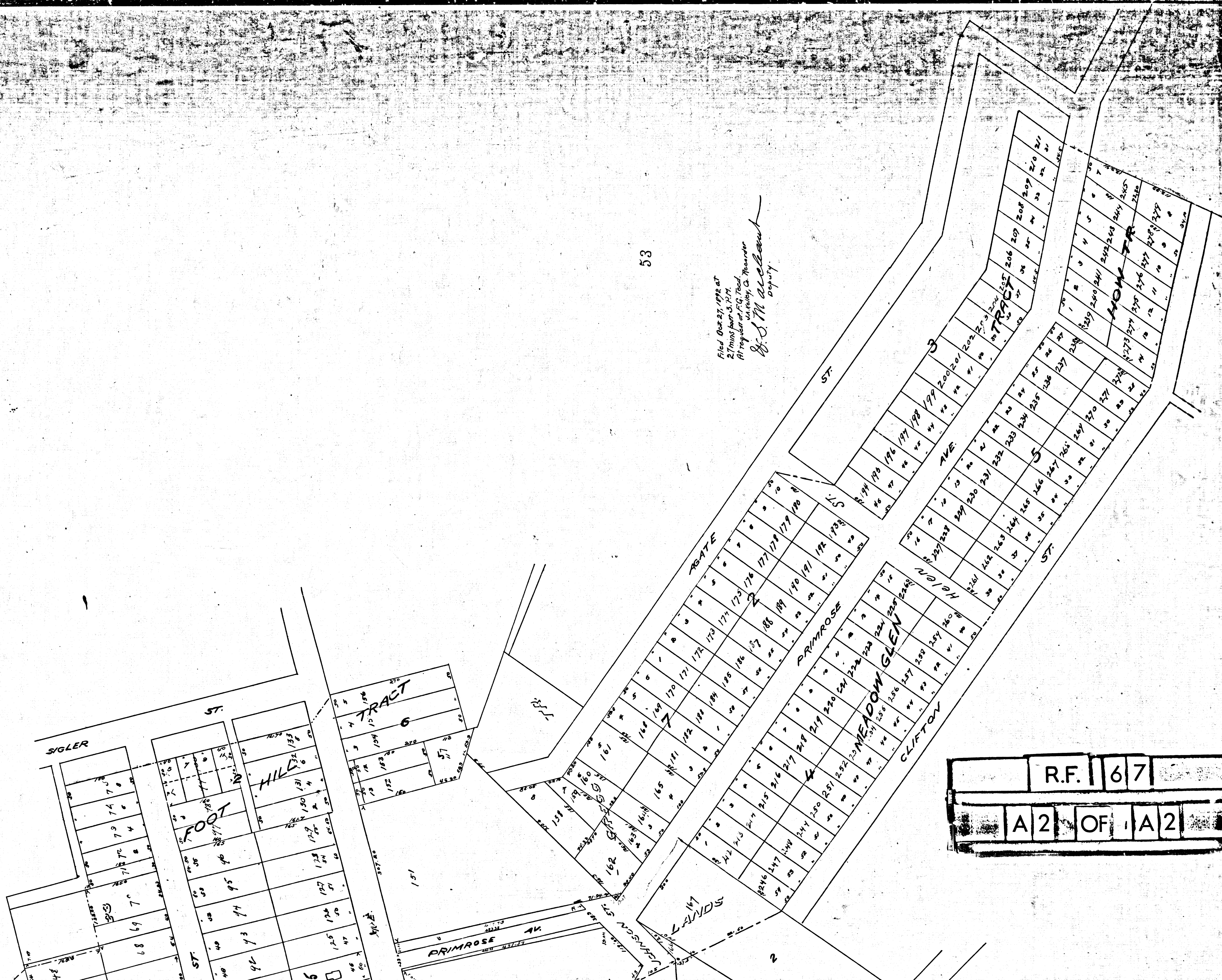


MAP
 -OF-
 ASSESSMENT DISTRICT
 -FOR THE-
OPENING OF PRIMROSE AV.
 BETWEEN
 PASADENA AVE. & JOHNSON ST.
 SECT 20 - 100 FEET TO 1 inch.
 J.H. Doctwater, City Eng. July 1892
 Los Angeles City - Cal.

Filed August 23 1892
 Freeman & Red
 City Clerk
 By G.O. Leach City Engineer

R.F. 67
 A1 OF A2

Note - Land proposed to be taken shown colored
 green, the boundary line of assessment district



Filed Oct 27, 1922 at
 2:10 PM
 At register of F.G. Todd,
 County Clerk,
 G.S.M. Alcant
 Deputy

53

R.F. 67
 A 2 OF 1 A 2