

Adopted & confirmed by Council
 Jan 25' 1897

Filed Feb 4. 1897

R.F.	69	
A1	OF	A2

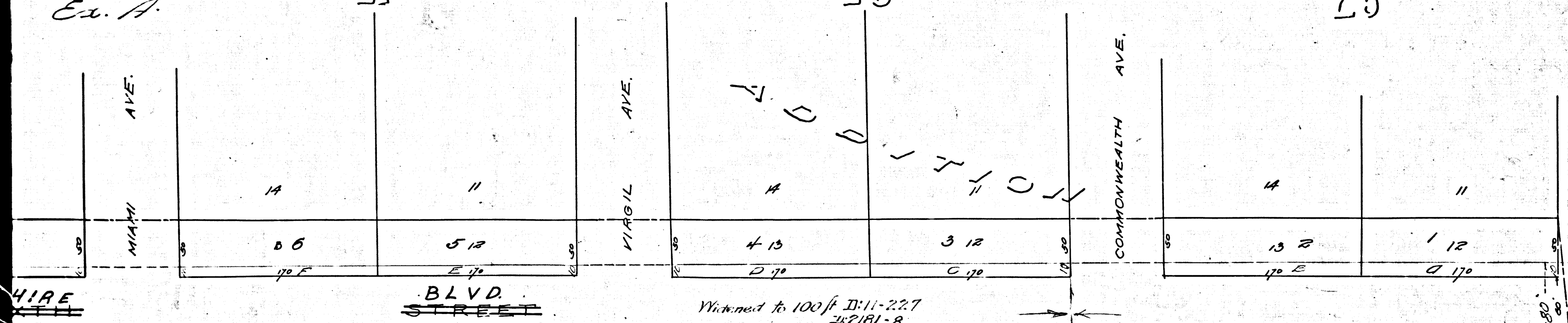
MAP
 OF THE
 ASSESSMENT DISTRICT
 FOR THE WIDENING OF
SIXTH STREET
 BETWEEN
 HOOVER ST. & VERMONT AVE.
 Scale 60 ft to 1 inch.

UNIVERSITY
Ex. A.

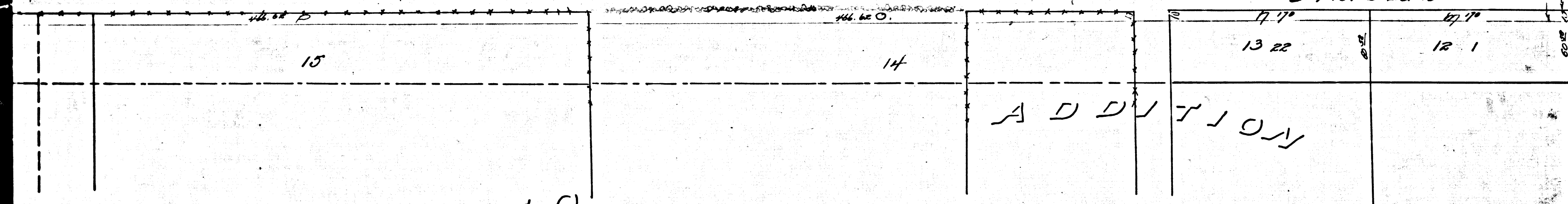
27

28

25



Widened to 100 ft. D:11-227
21-2181-8



2 SHATTU 1

MAP
OF THE
ASSESSMENT DISTRICT
FOR THE WIDENING OF
XTH STREET
BETWEEN
HOOVER ST and VERMONT AVE.
Scale 60 ft to inch.

R.F.	69	
A 2	OF	A 2

Sixth changed to Wilshire Blvd.