

Recorded at the request of Freeman G. Teed,
 Dec. 17th, 1892 at 12 min past 7 P.M.

C. A. Kelly, County Recorder.

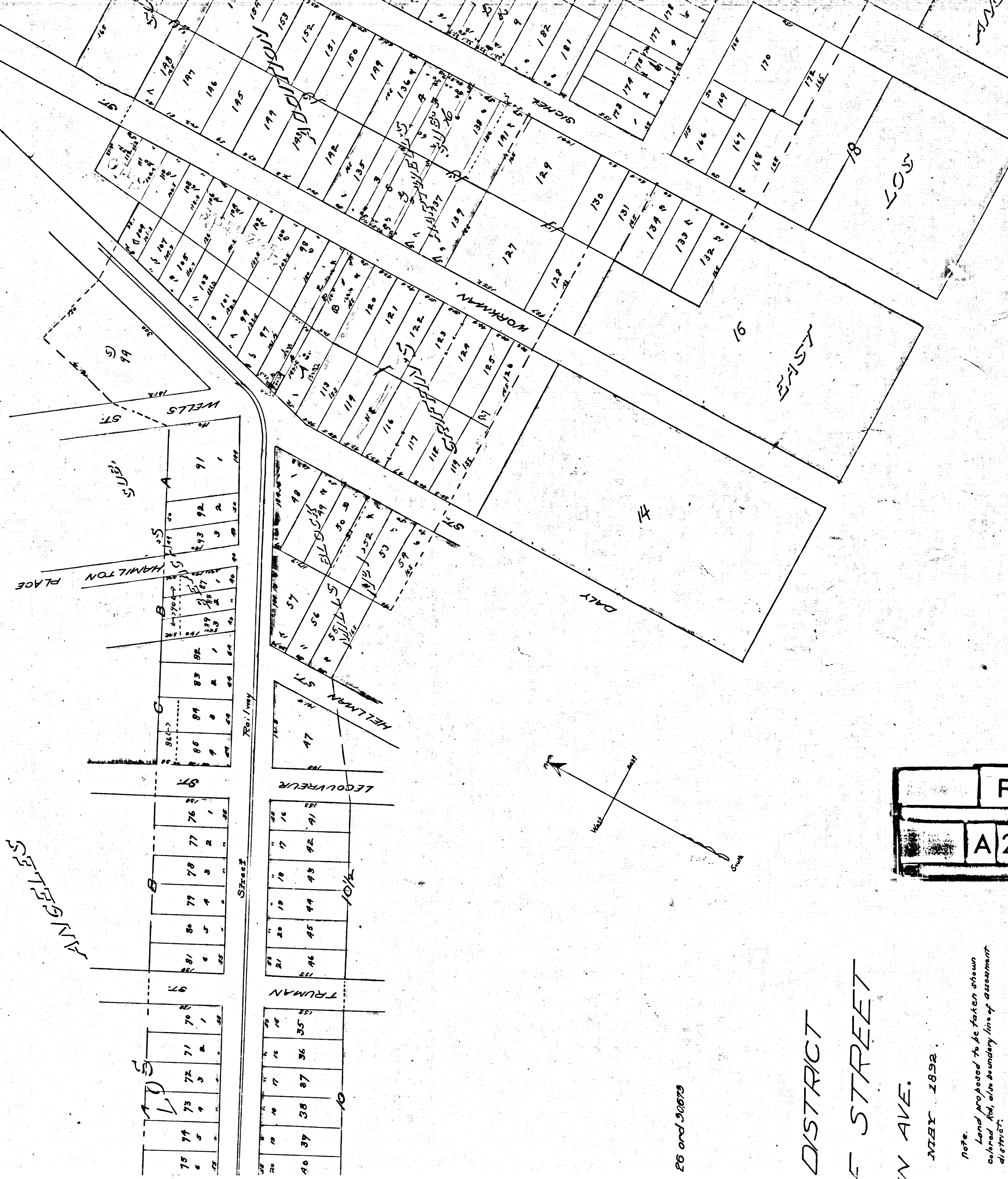
Hoff St changed to Ave 26 and 30573

MAP
 OF
 ASSESSMENT DISTRICT
 FOR THE
 OPENING OF HOFF STREET
 BETWEEN
 DALY ST. & GRIFFIN AVE.

J. H. DOCKWELLER, CITY ENG. NBY 1892.

Note.
 Land proposed to
 be colored red, also boundary
 district.

A1 OF A4 R.F. 70



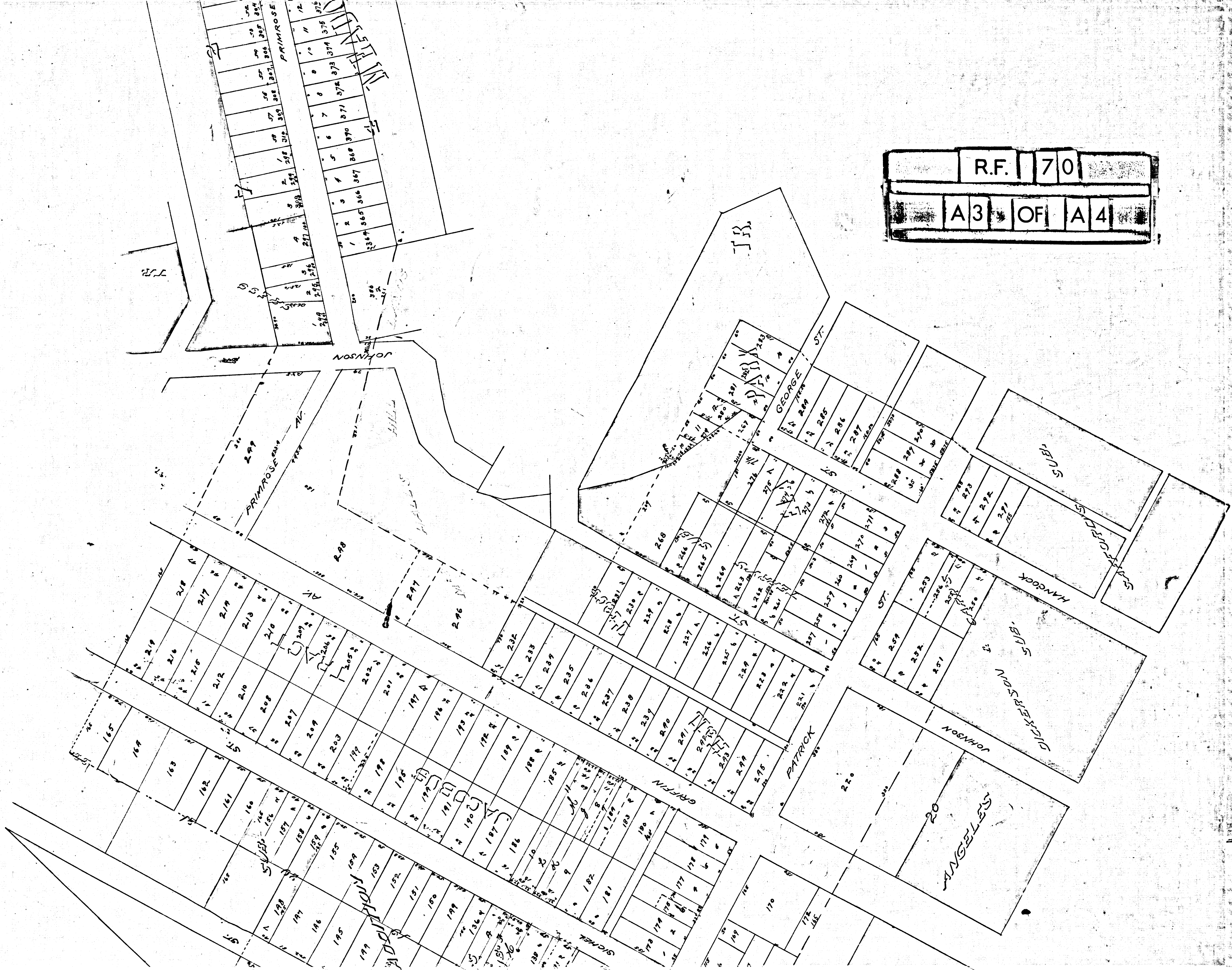
R.F. 70
A 2 OF A 4

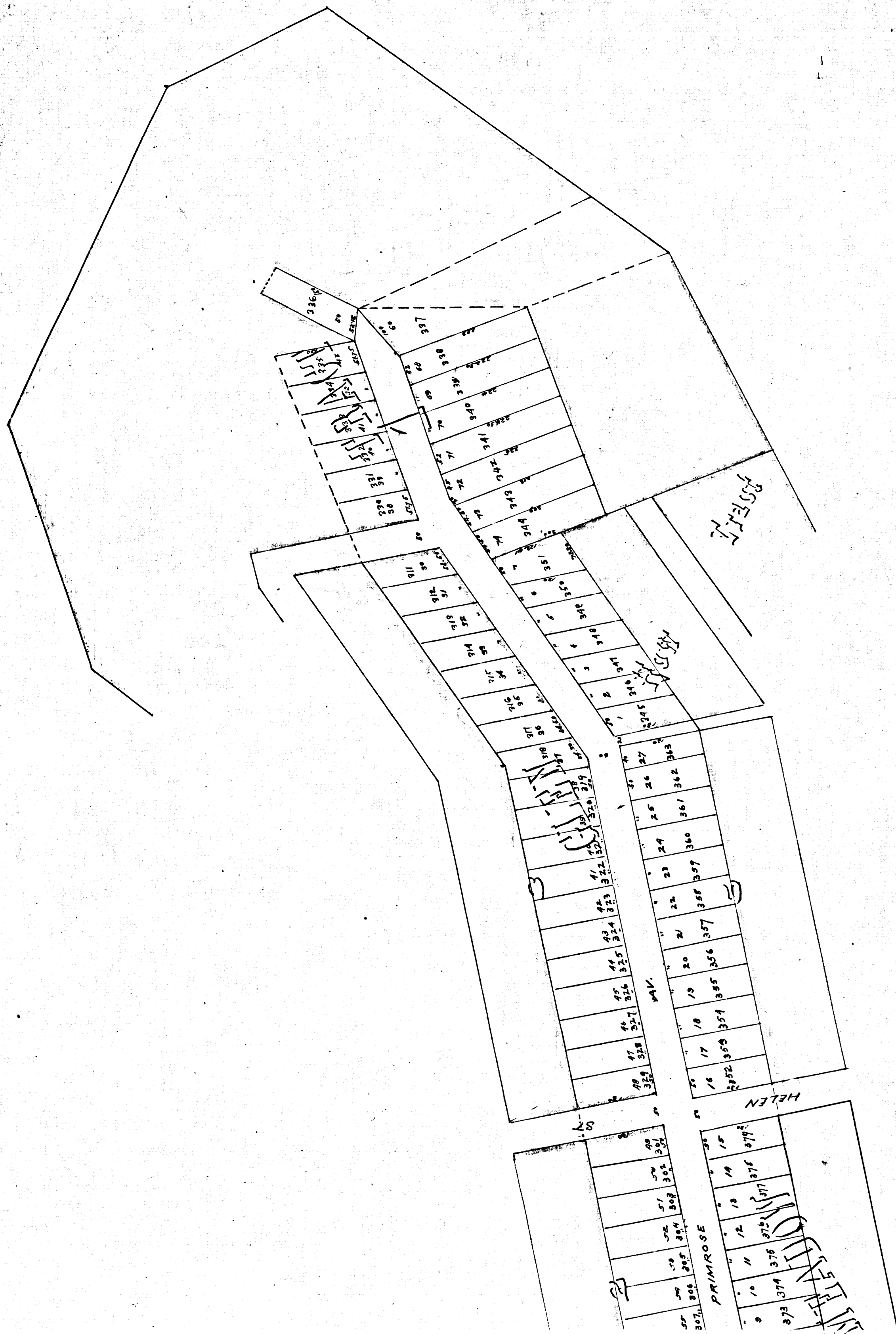
26 and 30073

DISTRICT
STREET
N AVE.

MAY 1892.

Note.
Land proposed to be taken shown
colored Red, also boundary line of assessment
district.





R.F. 70
A4 OF A4