

6
URMISTON

7
TRACT

HARDIN

24th ST.

23rd ST.

22nd ST.

21st ST.

HOOVER ST.

Electric Railway

UNION AVE.

LOUCHEED'S SUB OF LOTS 30, 31, 32 & RE-SUB OF LOTS 17, 18, 23, 24, 25 OF THE HOOVER TRACT

	R.F.	71	
	A1	OF	A3

MAP
 For the opening and widening of
HOOVER STREET

Between
 WASHINGTON ST. and the intersection of BUSH and HOOVER

CITY of LOS ANGELES

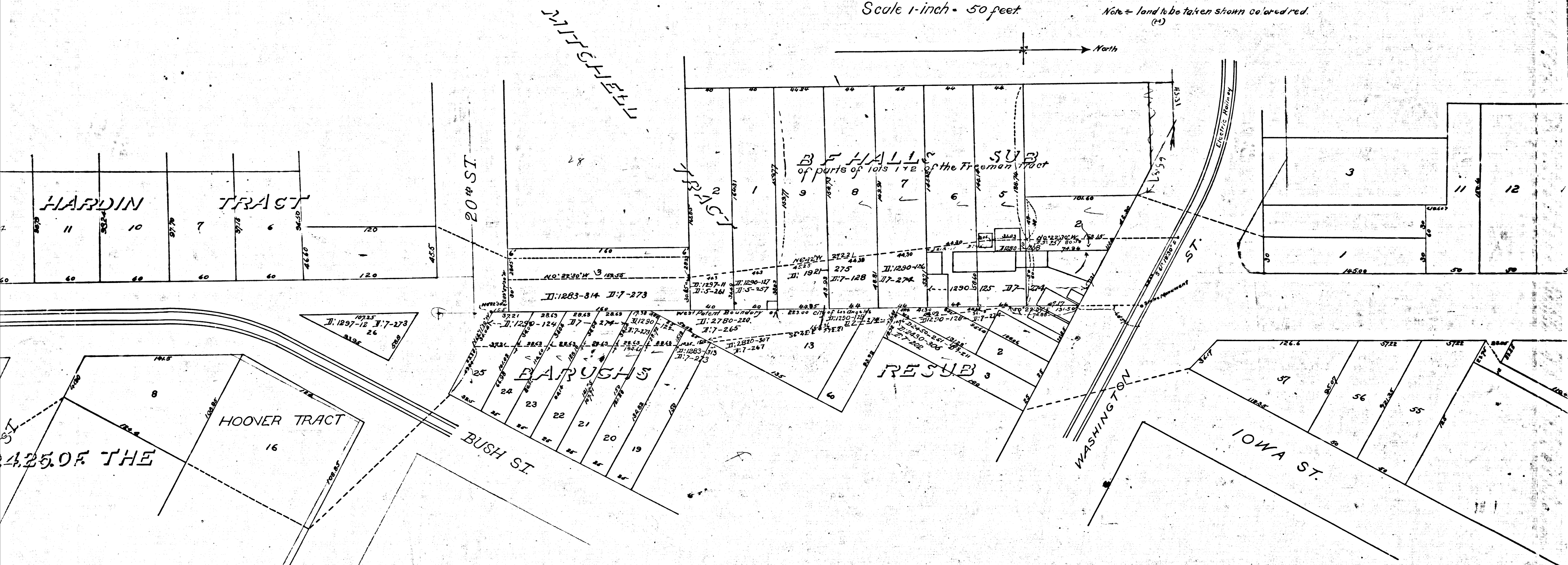
J.H. Dockweiler City Engineer

Dec 1897

Scale 1-inch = 50 feet

Ordinance N°4520

Note = land to be taken shown colored red.



R.F. 71
 A2 OF A3

Filed Nov. 25, 1898
at 4 min. past 3 P.M.

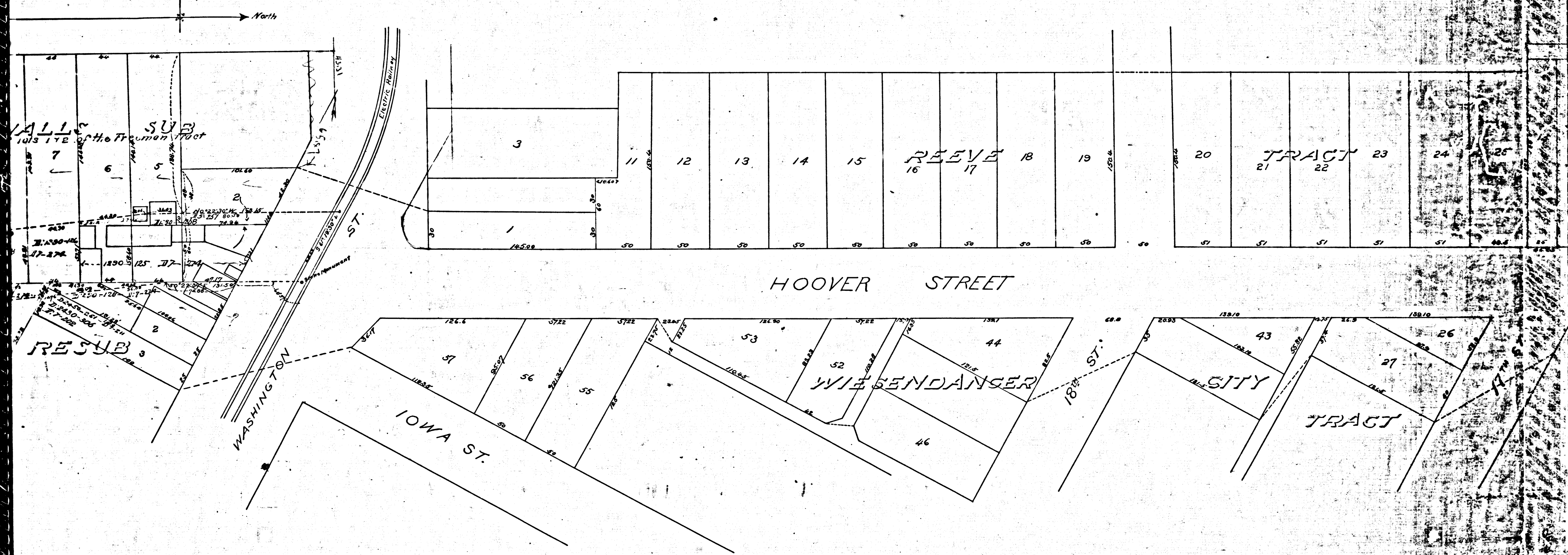
MAP
Opening and widening of
R STREET

Between
and the intersection of BUSH and HOOVER
of LOS ANGELES
Schweiler City Engineer

Dec 1897
Scale 1-inch = 50 feet

Ordinance N°4520

Note = land to be taken shown colored red.
(H)



R.F.	71	
A3	OF	A3