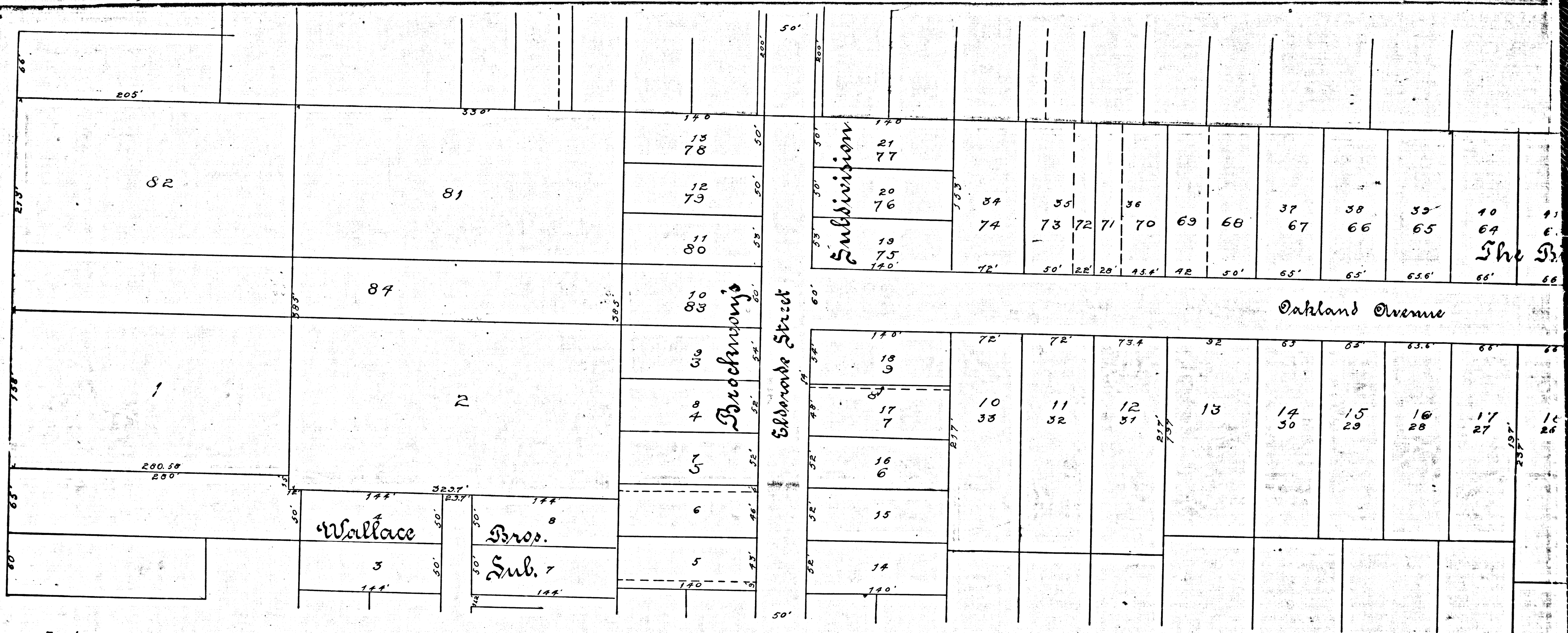
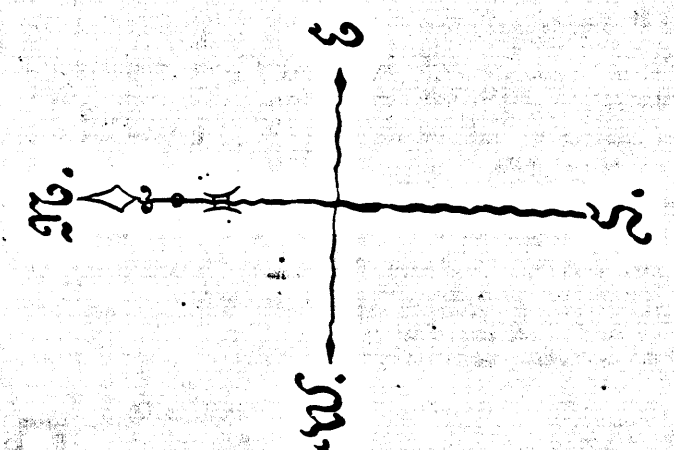


Colorado Street



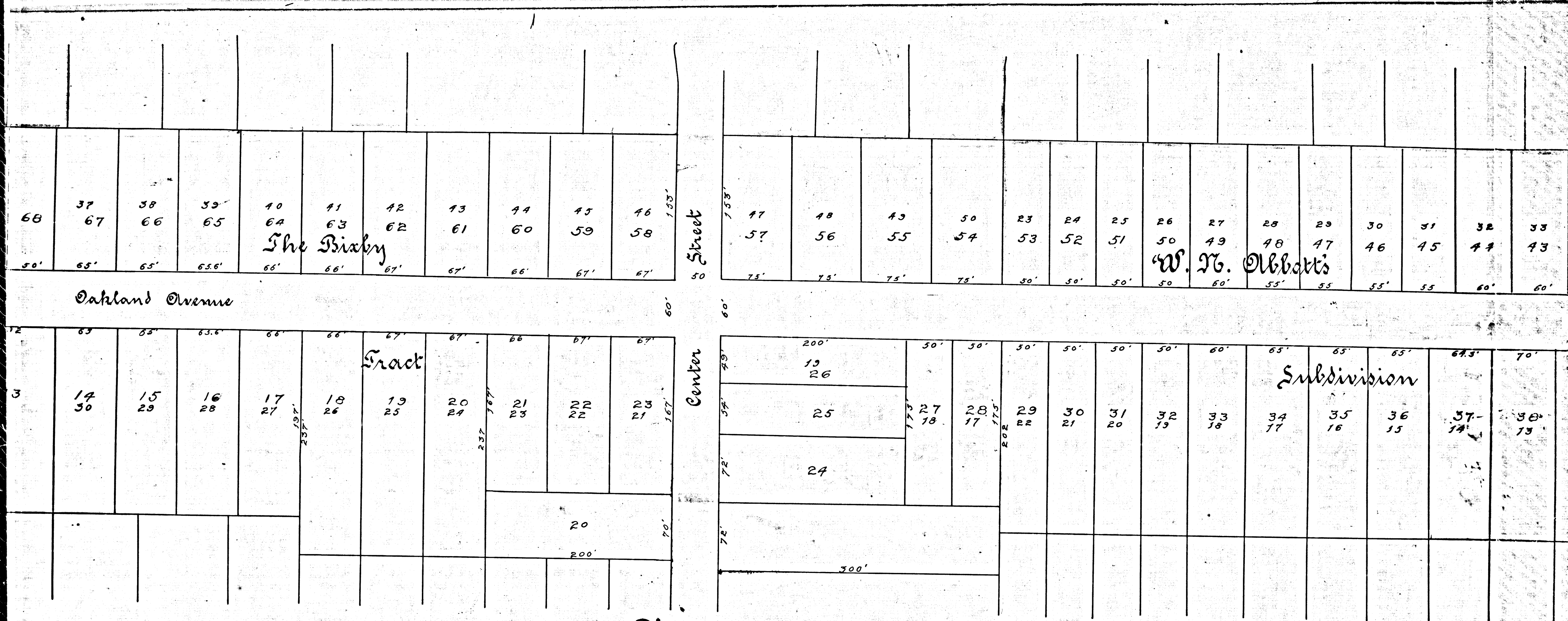
Index #8

R.F. 72  
 A1 OF A3



Showing the  
 Colorado Street  
 blocks, but an  
 Herein the  
 lines show the  
 lines show the  
 scale of 60 feet

Sasadena Cal.  
 April, 1895



### Diagram

Showing the assessment district and the land to be taken for the extension of Oakland Avenue in the City of Pasadena from Eldorado Street to Colorado Street, also showing the lands assessed and the relative location of each district, lot, block or portion of lot and its dimensions. Each block, lot or portion of lot taken or assessed is designated and described by the numbers marked thereon in red ink. Herein the mark ' means feet. Figures in black ink next to property lines show each the length of said line in feet. Other black figures show the numbers of the lots. Green section-lining shows portions of land to be taken for said extension of Oakland Avenue. Green fig-ures show the dimensions of said portions of land. Red section-lining shows area covered by assessment district. The diagram is drawn to a scale of 60 feet to one inch.

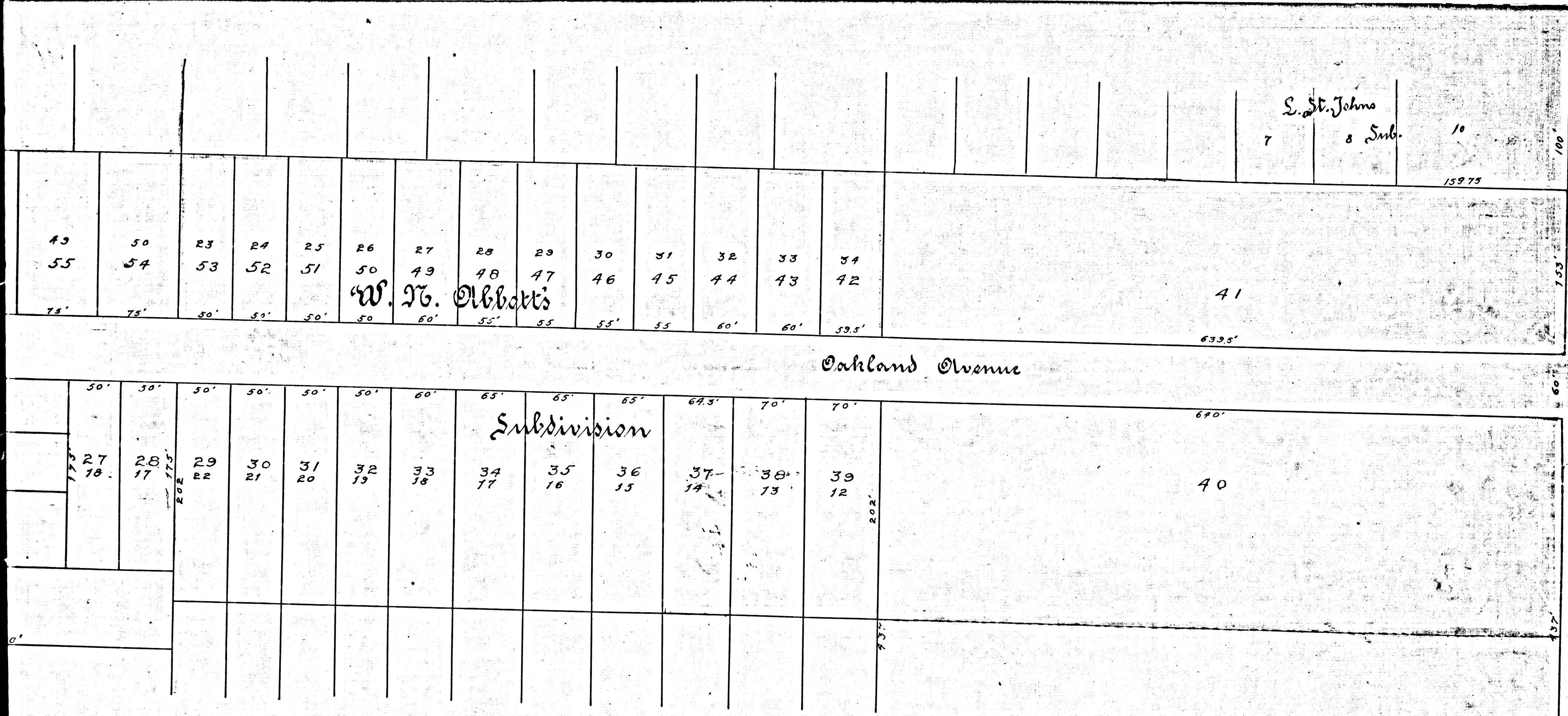
Pasadena Cal.  
April, 1895

R.F.	72	
A 2	OF	A 3

W. B. Clapp  
City Engineer.

Continued  
of the

Approved  
Filed



California Street

Oakland Avenue

S. St. Johns

8 Sub.

10

159.75

41

6395'

Subdivision

640'

40

Index #8

Copy

in the City of Pasadena from Eldorado Street to  
 block or portion of lot and its dimensions. Each  
 marked thereon in red ink.  
 the length of said line in feet. Other black fig.  
 for said extension of Oakland Avenue. Green fig.  
 assessment district. The diagram is drawn to a

W. B. Clapp  
 City Engineer.

Confirmed and adopted by the Board of Trustees  
 of the City of Pasadena July 1st 1895.  
 Herman Dyer,  
 Clerk of City of Pasadena

Approved July 3, 1895. E.T.W.  
 Filed May 13, 1895. Herman Dyer, City Clerk.

	R.F.	72	
A3	OF	A3	