

CENTRAL ARLINGTON HEIGHTS TRACT

43

R.F.	76
A1	OF A9

2232.72
2232.72
2232.72'
2232.72'

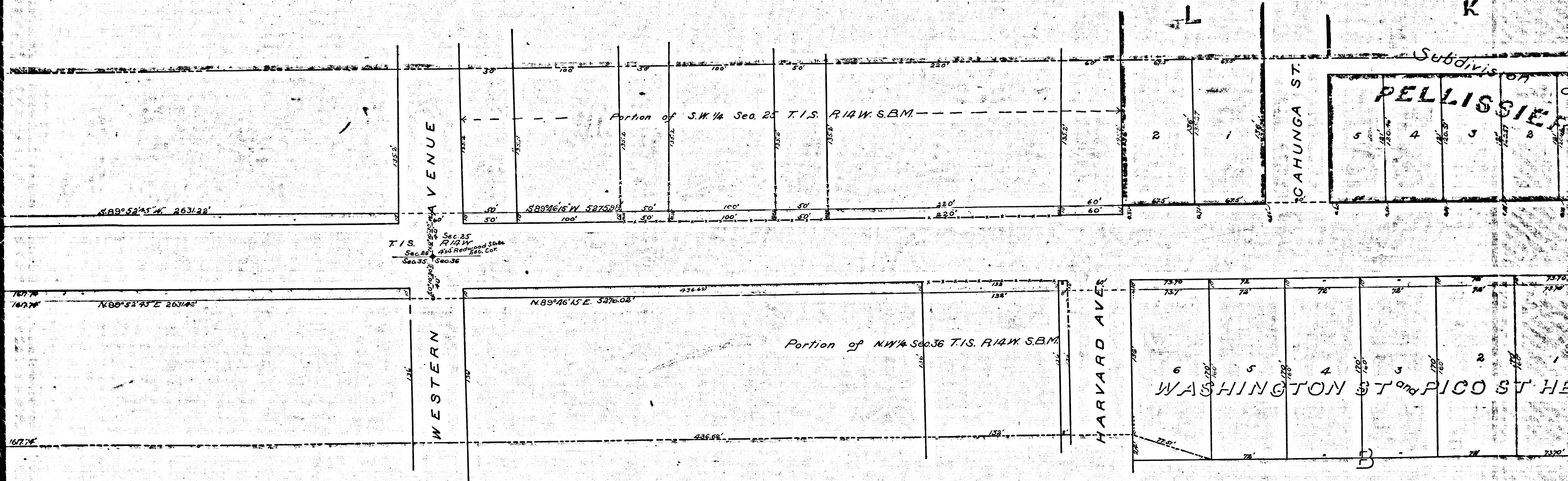
Portion of SE 1/4 Sec. 26 T. 1 S. R. 14 W. S. B. M.

167.74
167.74
167.74'

Portion of NE 1/4 Sec. 35 T. 1 S. R. 14 W. S. B. M.

30'
STREET

	R.F.	76	
	A 2	OF	A 9



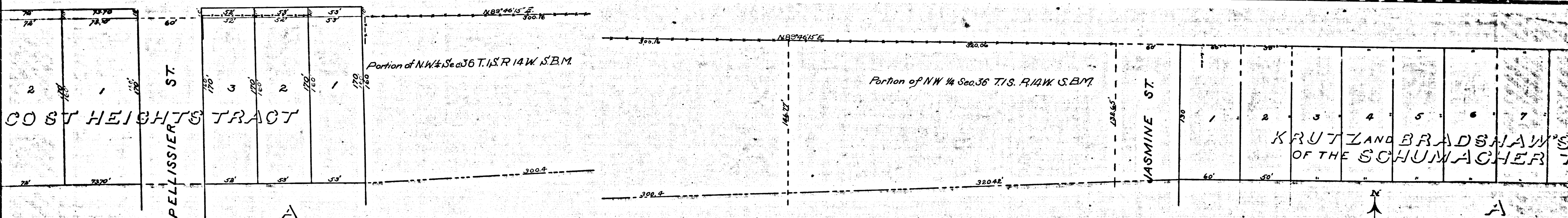
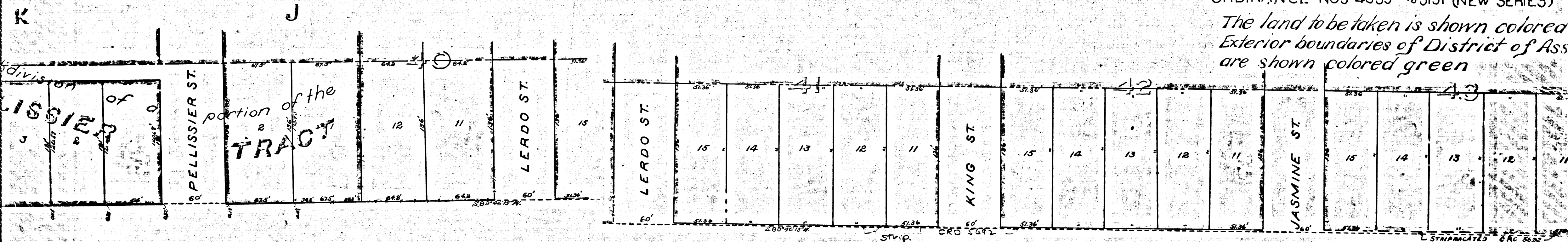
R.F. 76
 A3 OF A9

Filed Nov 29 1898
at 20min 10pm

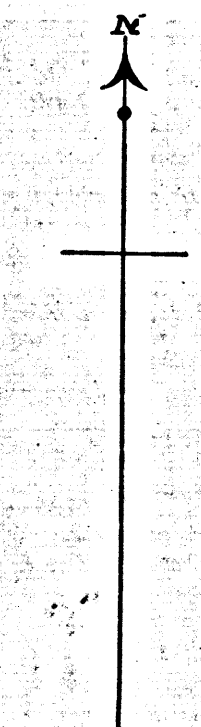
MAP SHOWING
Land to be taken and the
DISTRICT OF ASSESSMENT
for the opening and widening of
PICO STREET
between
ALVARADO ST and the WEST CITY L
CITY OF LOS ANGELES
CAL

J. H. DOCKWEILER CITY ENGINEER
JUNE 1898 SCALE 1 INCH = 50
ORDINANCE NOS 4959 to 5151 (NEW SERIES)

The land to be taken is shown colored
Exterior boundaries of District of Ass
are shown colored green



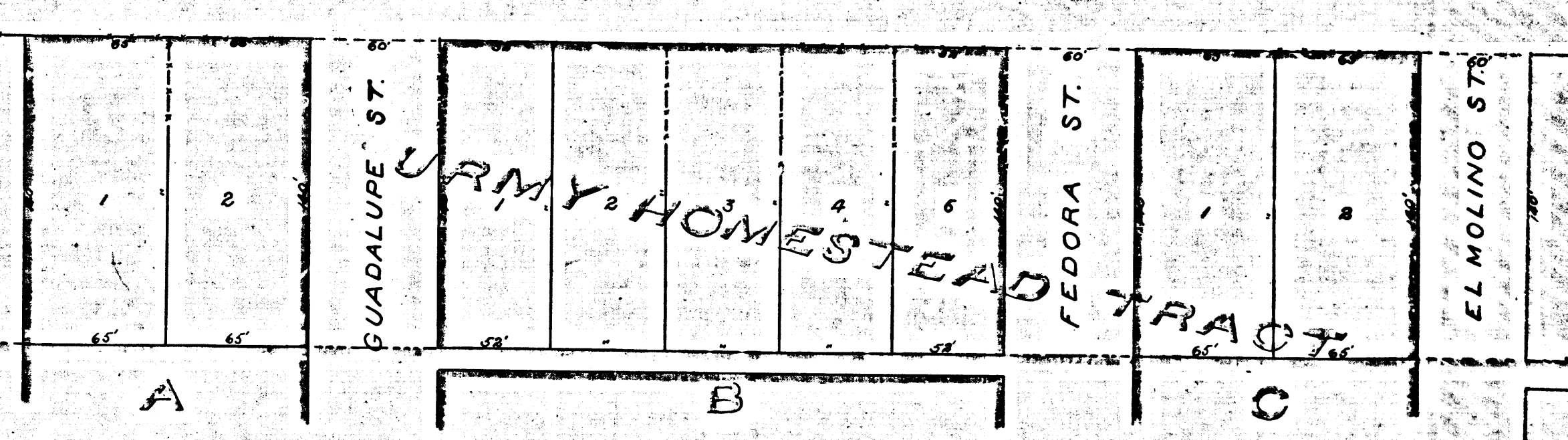
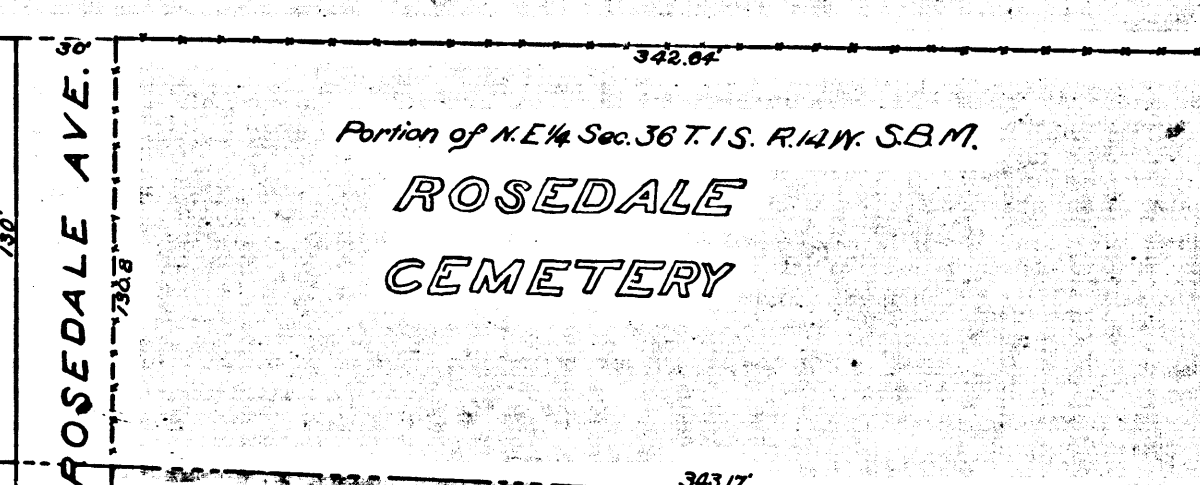
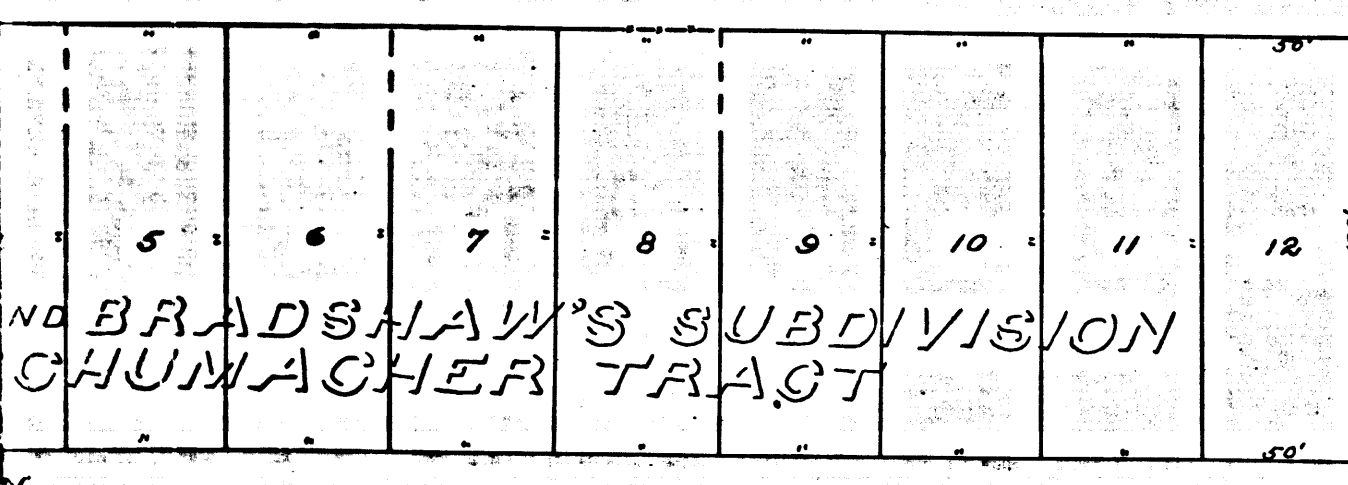
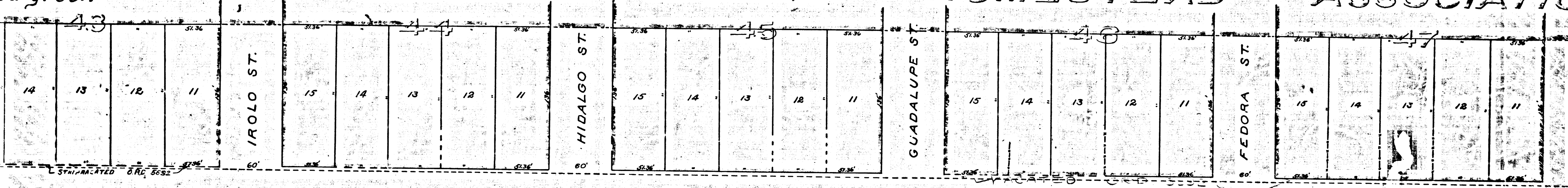
R.F. 76
A 4 OF A 9



SHOWING
 en and the
 ASSESSMENT
 ing and widening of
STREET
 een
 at the WEST CITY LINE
 OS ANGELES
 AL
 ER CITY ENGINEER
 1898 SCALE 1 INCH = 50 FEET
 59 No 5151 (NEW SERIES)

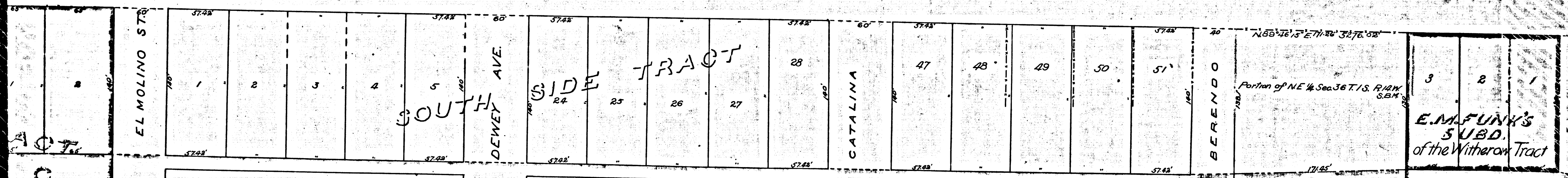
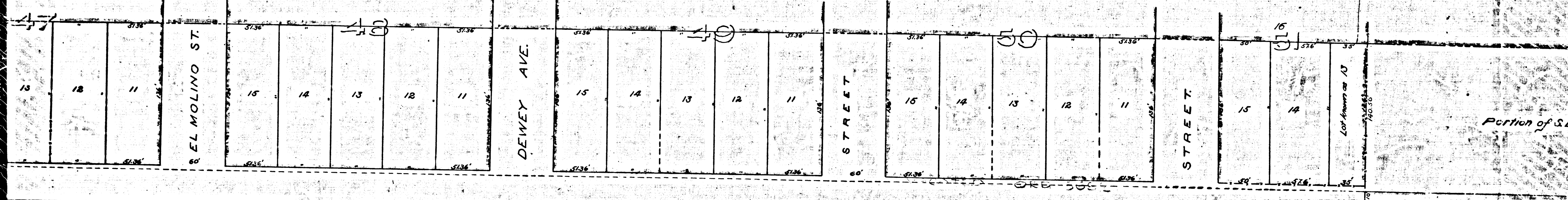
ken is shown colored red.
 es of District of Assessment
 ed green

ELECTRIC RAILWAY HOMESTEAD ASSOCIATION

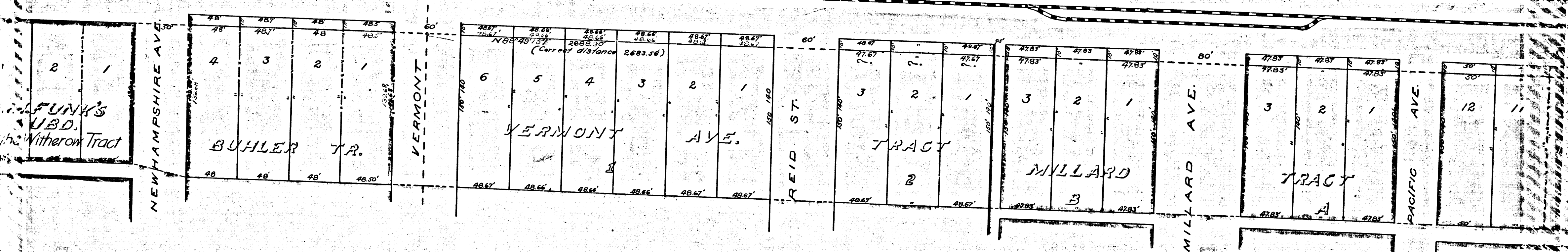
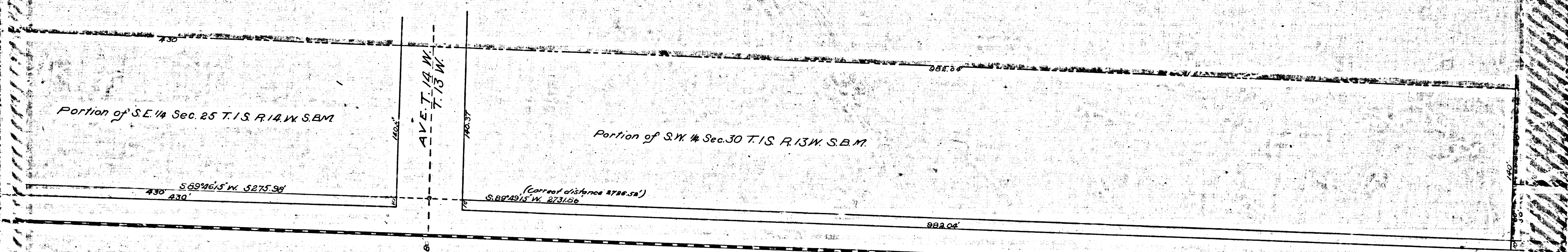


R.F. 76
 A 5 OF A 9

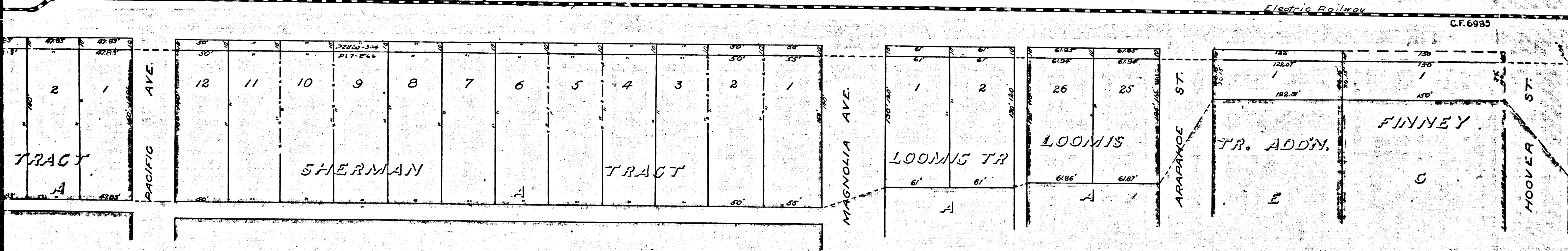
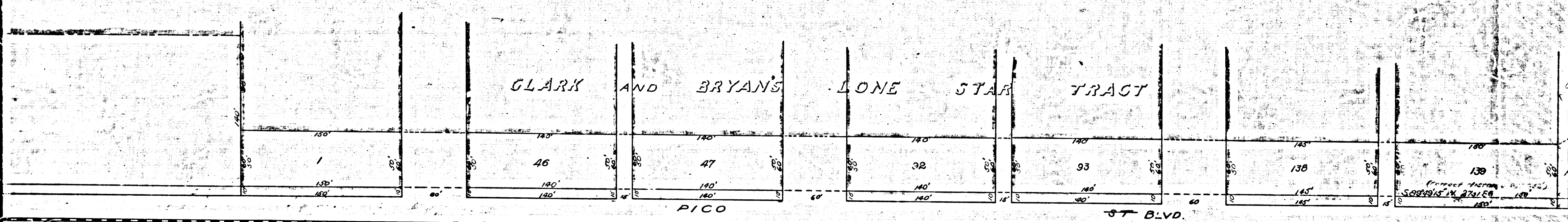
SOCIATION



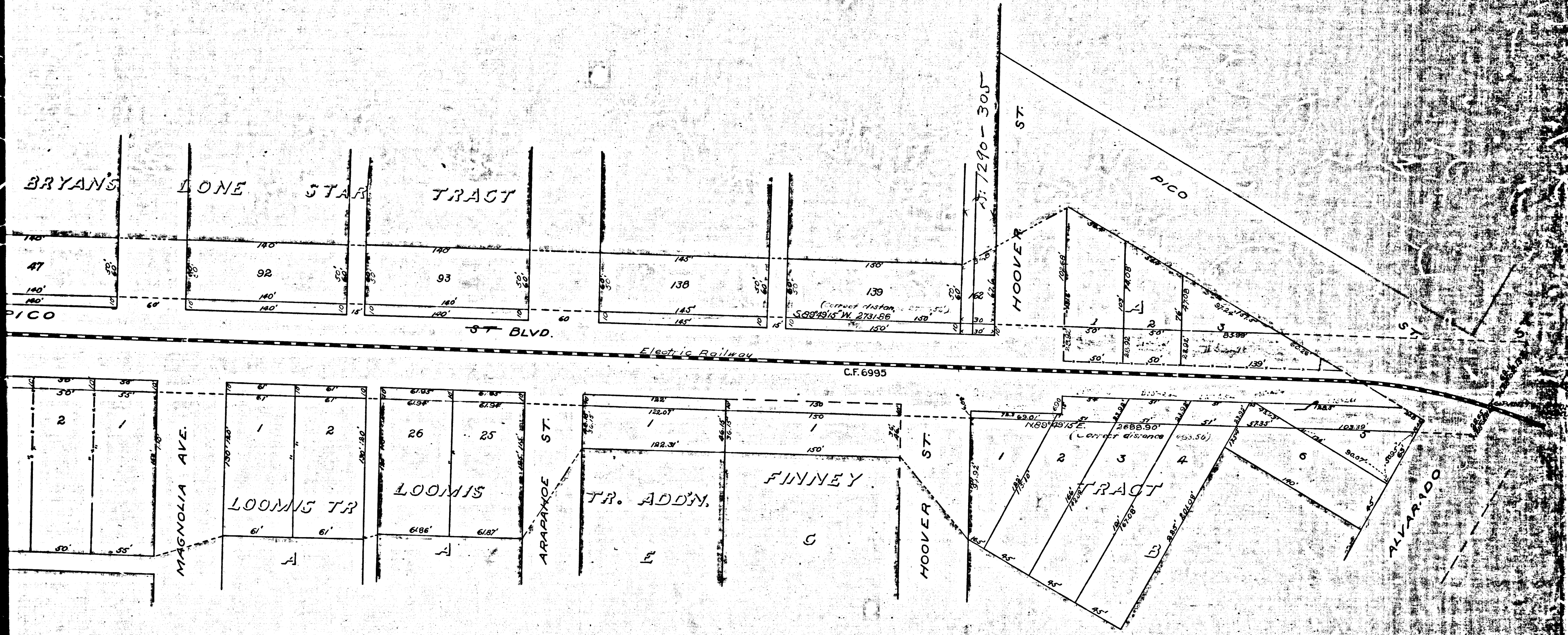
	R.F.	76	
	A 6	OF	A 9



R.F. 76
A7 OF A9



R.F. 76
A 8 OF A 9



R.F.	76	
A 9	OF	A 9