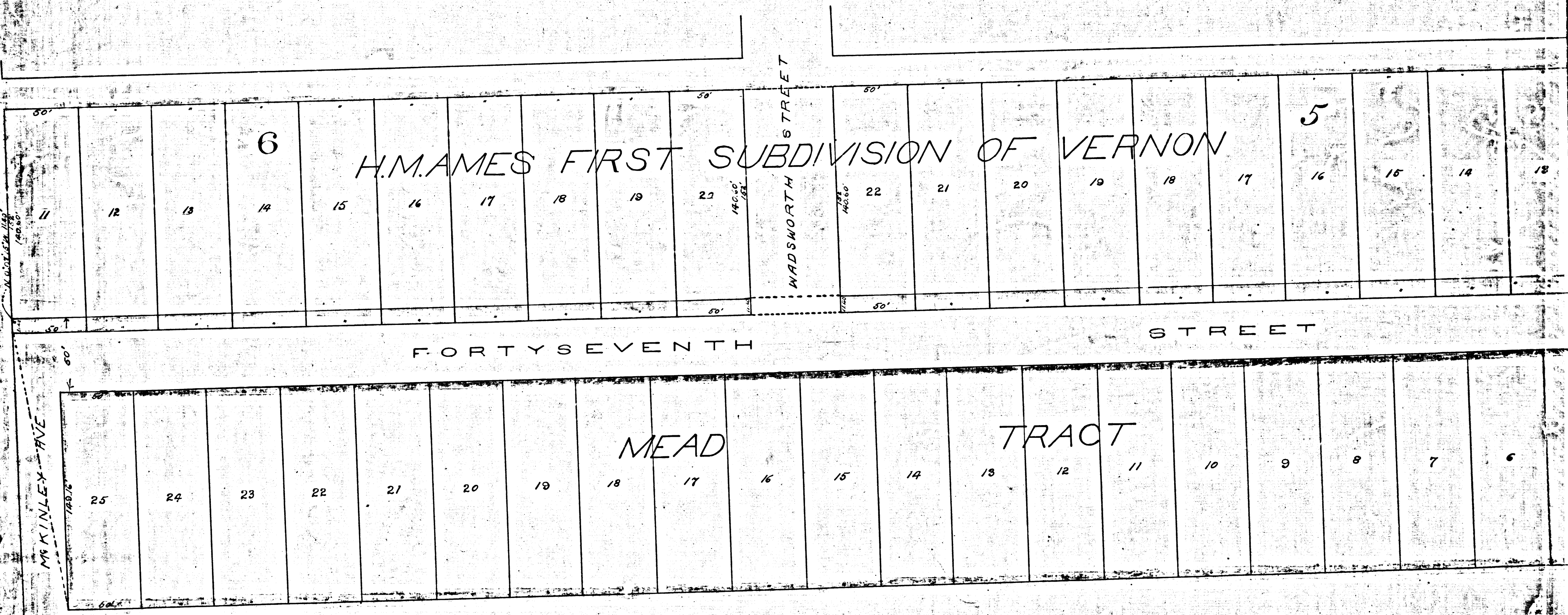


MAP
 OF THE
 ASSESSMENT DISTRICT
 FOR THE WIDENING OF
FORTYSEVENTH STREET
 BETWEEN
 CENTRAL AVE and the W-line of block 6 of H.MAMES first SUB. of VERNON
 IN THE
 CITY OF LOS ANGELES
 SCALE 40 ft 1 INCH
 ORDINANCE NO 4832 N.S.

Sht. 7

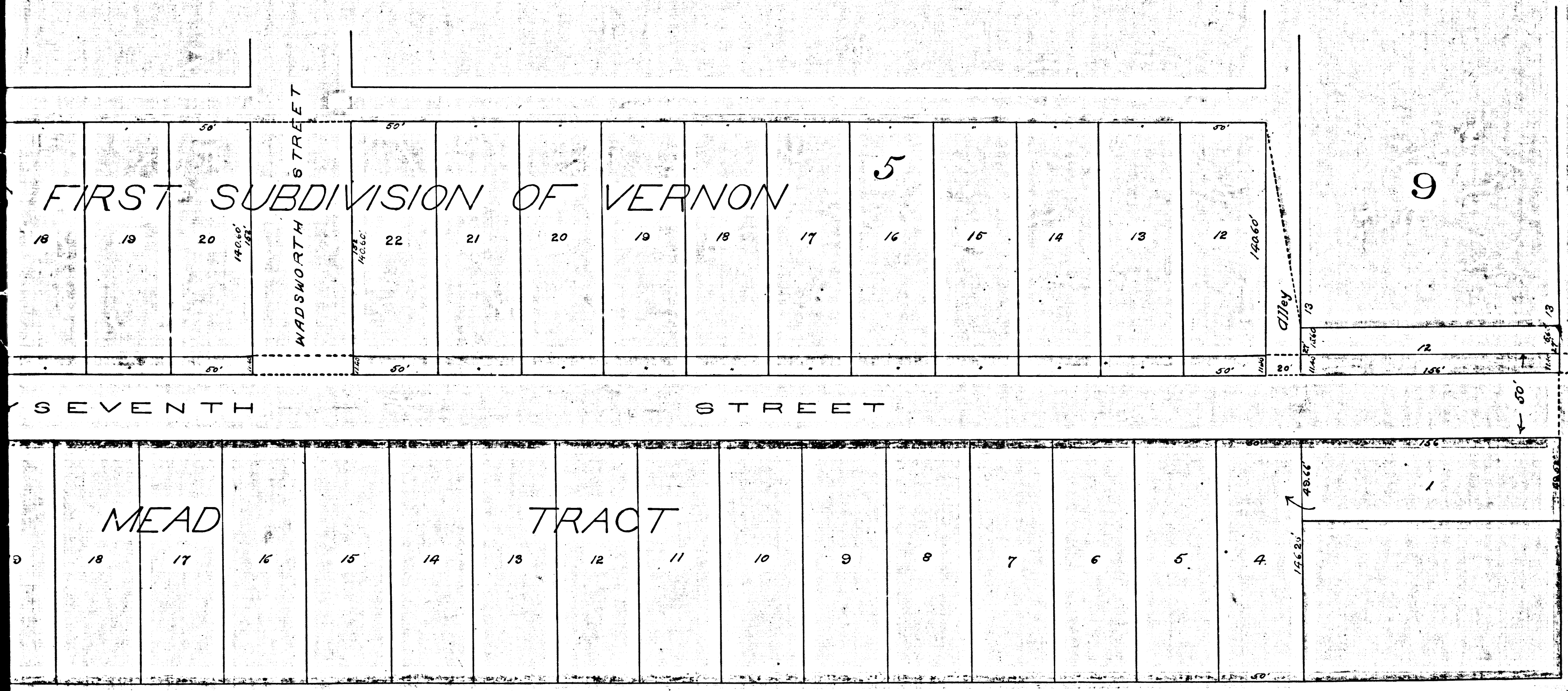
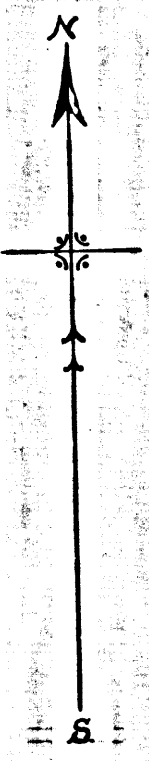


R.F. 77
 A1 OF A2

MAP
 OF THE
 ASSESSMENT DISTRICT
 FOR THE WIDENING OF
FORTYSEVENTH STREET
 BETWEEN
 CENTRAL AVE and the W-line of block 6 of H.MAMES first SUB. of VERNON
 IN THE
 CITY OF LOS ANGELES

Filed June 15/1898
 at 49 min past 2 P.M.

SCALE 40 ft 1 INCH
 Sht. 7
 ORDINANCE NO 4832 N.S.



CENTRAL AVE
 50 ft from the corner of section 1 as 1/4 and 1/2 E. 1/4
 50 ft from the corner of section 1 as 1/4 and 1/2 E. 1/4
 50 ft from the corner of section 1 as 1/4 and 1/2 E. 1/4
 50 ft from the corner of section 1 as 1/4 and 1/2 E. 1/4

R.F. 77
 A 2 OF A 2