

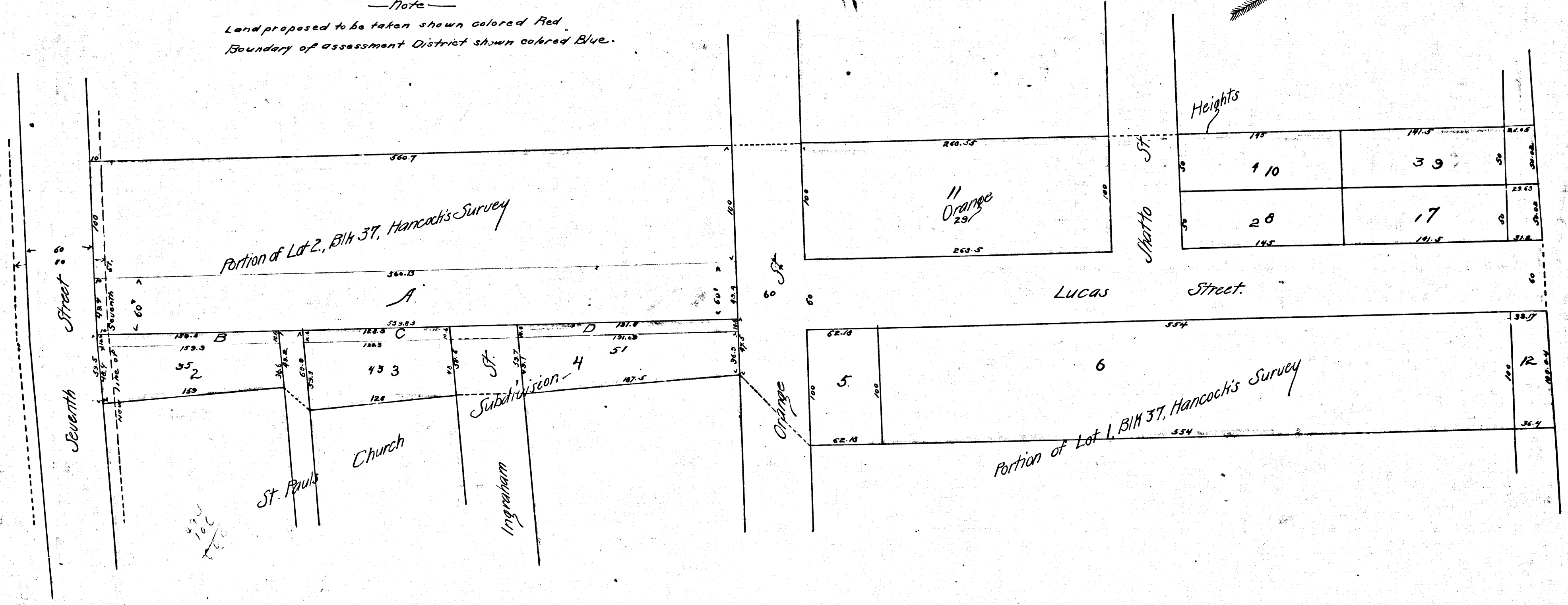
MAP  
 OF THE  
 ASSESSMENT DISTRICT  
 FOR THE  
 OPENING AND EXTENDING  
 OF  
**LUCAS AVENUE**  
 FROM  
 ORANGE ST TO SEVENTH ST.

J. H. Dockweiler City Engr. June 1892.

Scale 60 feet to 1 inch.

*Note*  
 Land proposed to be taken shown colored Red.  
 Boundary of assessment District shown colored Blue.

Filed at the request of  
 C. A. Luchenbach.  
 March 10, 1893.  
 Arthur Bray  
 County Recorder.



R.F. 79