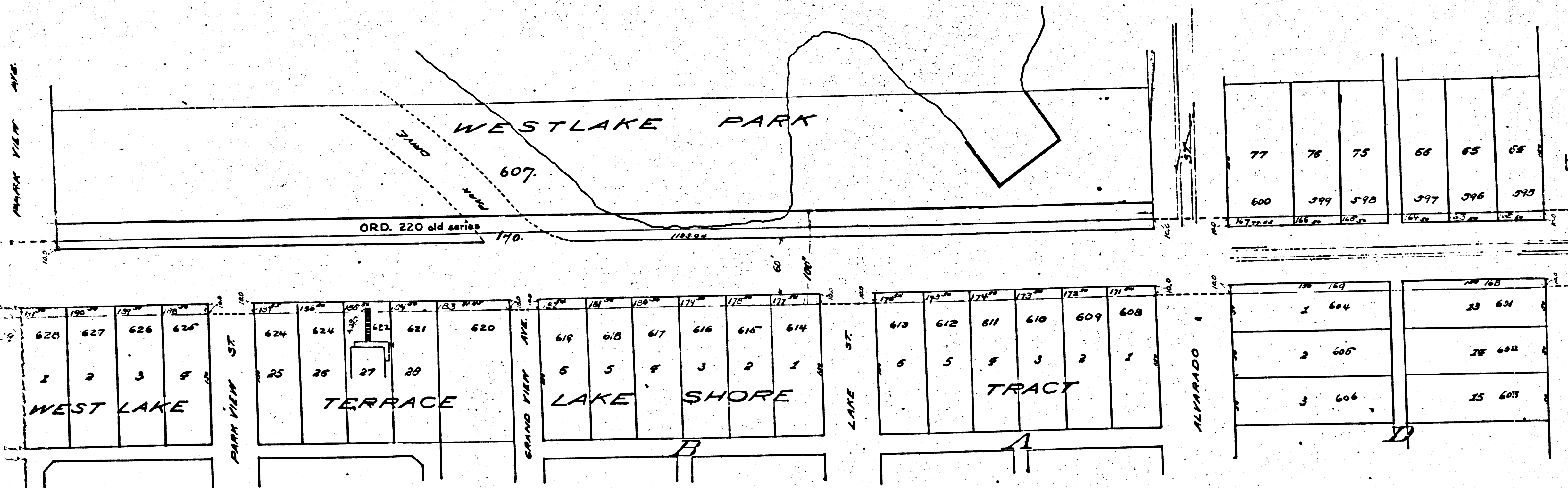
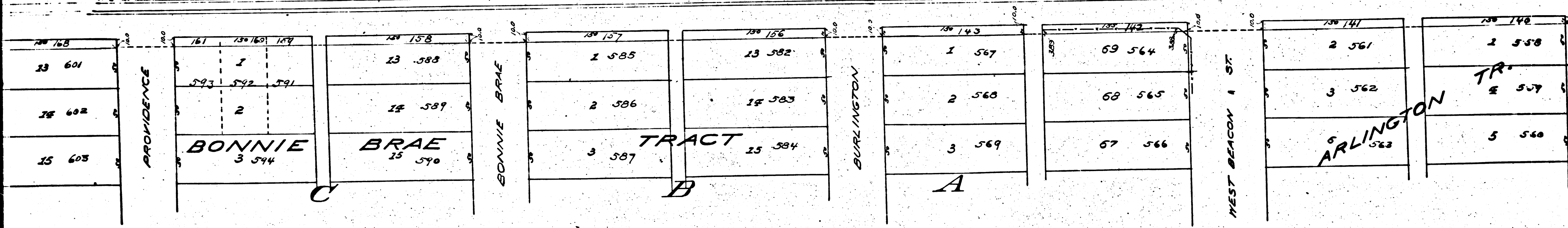
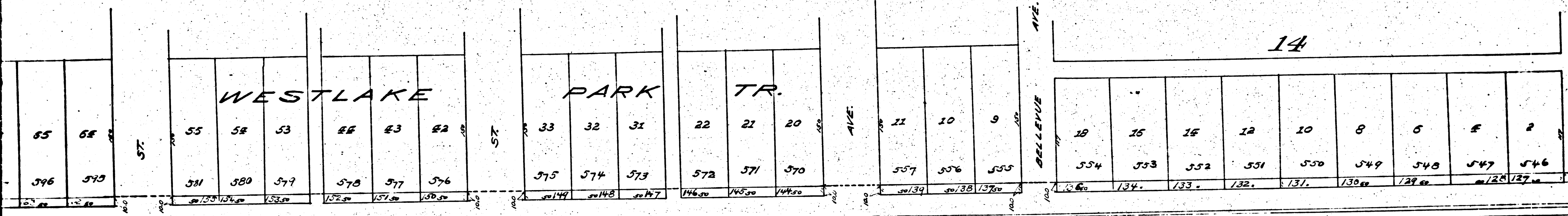


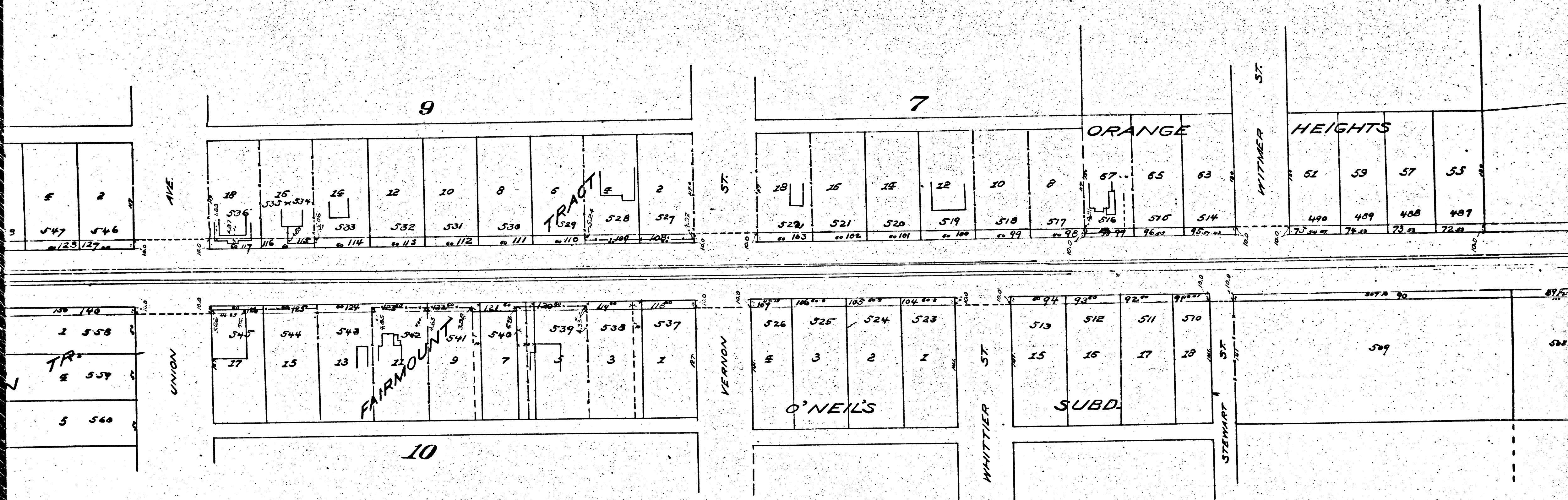
R.F. 80  
 A 1 OF A 8



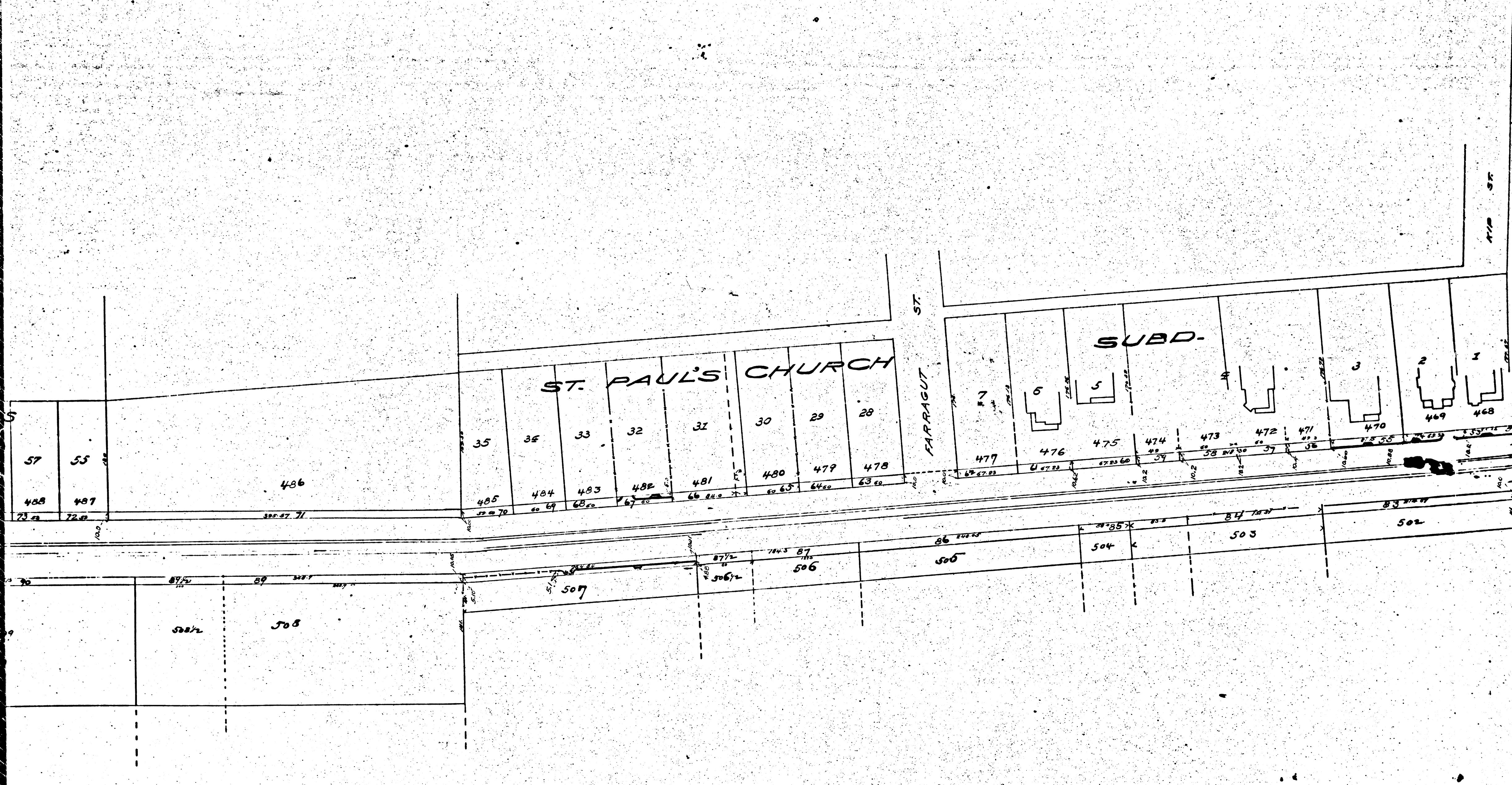
R.F. 80  
A 2 OF A 8



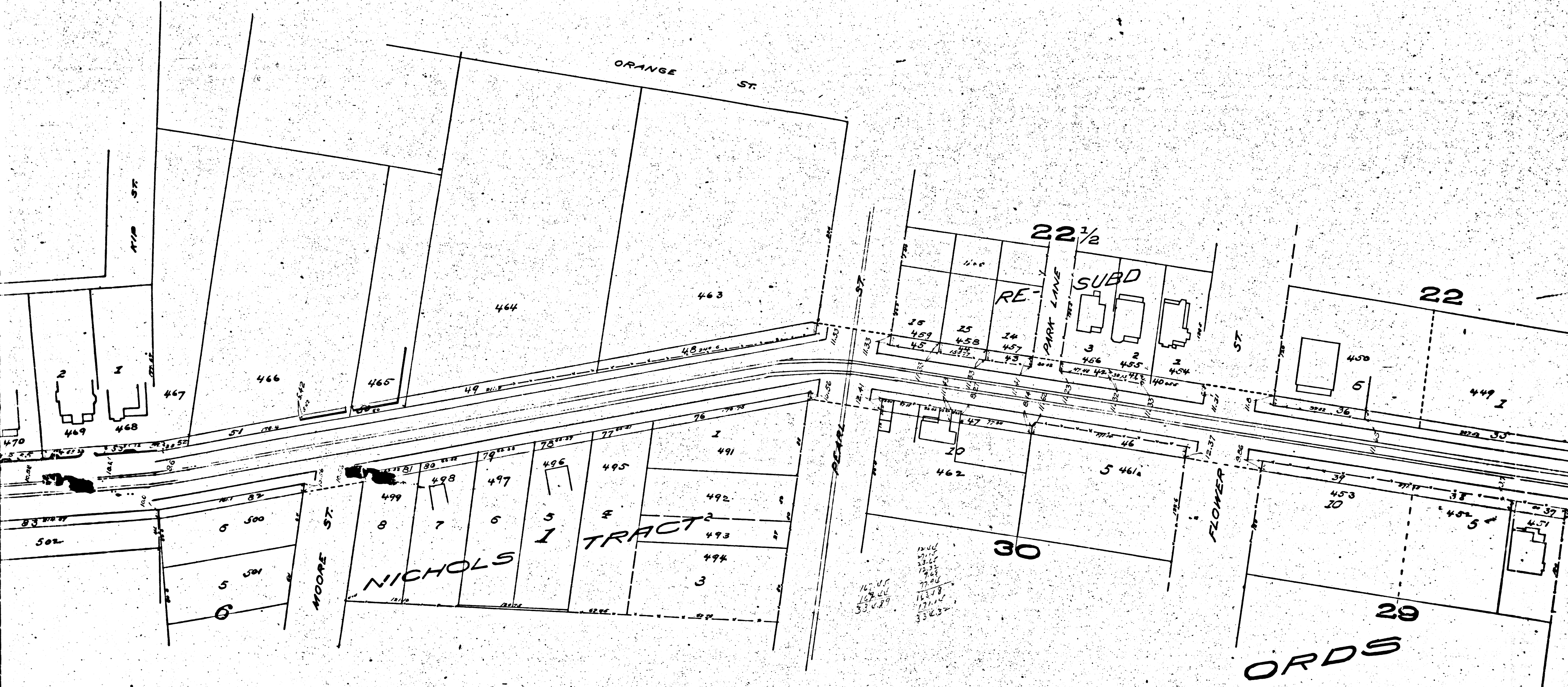
R.F. 80  
 A 3 OF A 8



R.F. 80  
 A 4 OF A 8



R.F. 80  
 A 5 OF A 8



R.F. 80  
 A 6 OF A 8

MAP  
OF THE  
ASSESSMENT DISTRICT  
FOR THE WIDENING OF  
**SEVENTH STREET**  
BETWEEN  
MAIN ST. AND WEST CITY B'DY  
SCALE - 60 FEET TO 1 INCH

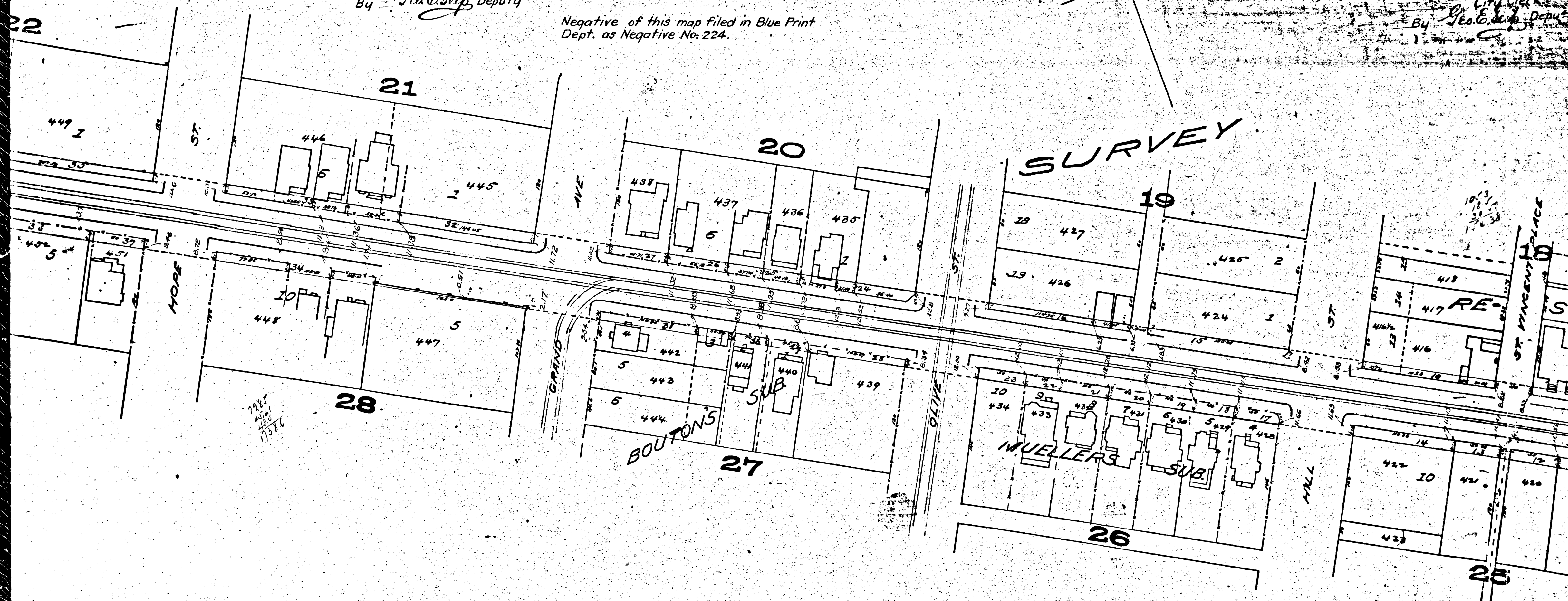
J.H. Dockweiler City Engr. Oct. 1891.

Filed Feb. 6<sup>th</sup> 1892  
FREEMAN G. TEED,  
City Clerk.  
By Geo. E. Ship Deputy

Exhibit "A"

Negative of this map filed in Blue Print  
Dept. as Negative No. 224.

Confirmed and Adopted by Council  
at its meeting of April 18<sup>th</sup> 1892  
FREEMAN G. TEED,  
City Clerk.  
By Geo. E. Ship Deputy



R.F. 80  
A 7 OF A 8

STATE OF CALIFORNIA } ss.  
CITY OF LOS ANGELES

I, Freeman G. Teed, City Clerk of the City of Los Angeles, do hereby  
Certify the foregoing to be a full true and correct copy of Map and  
Plan of Assessment district for the widening of  
Seventh Street from Main to West City Boundary with  
Amended Report of Commissioners as prepared & adopted by Council  
at its meeting of April 18<sup>th</sup> 1892 and as published under No. 1036 of 1894  
In testimony whereof I have hereunto set my hand and  
affixed the corporate seal of said City, at my office,  
this 28<sup>th</sup> day of April A.D. 1892

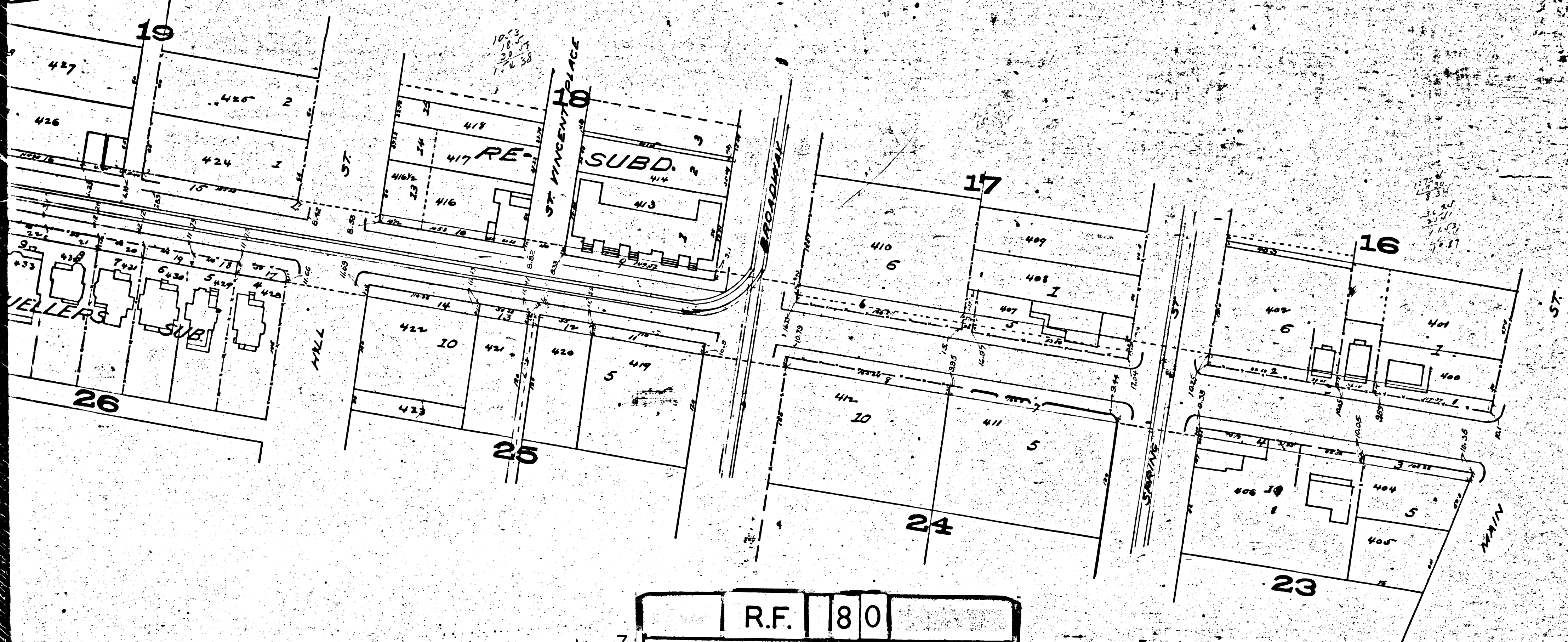


Freeman G. Teed  
City Clerk of the City of Los Angeles  
By Geo. E. Seip Deputy

Confirmed and Adopted by Council  
at its meeting of April 18<sup>th</sup> 1892

Freeman G. Teed,  
City Clerk  
By Geo. E. Seip, Deputy

SURVEY



R.F. 80  
A 8 OF A 8