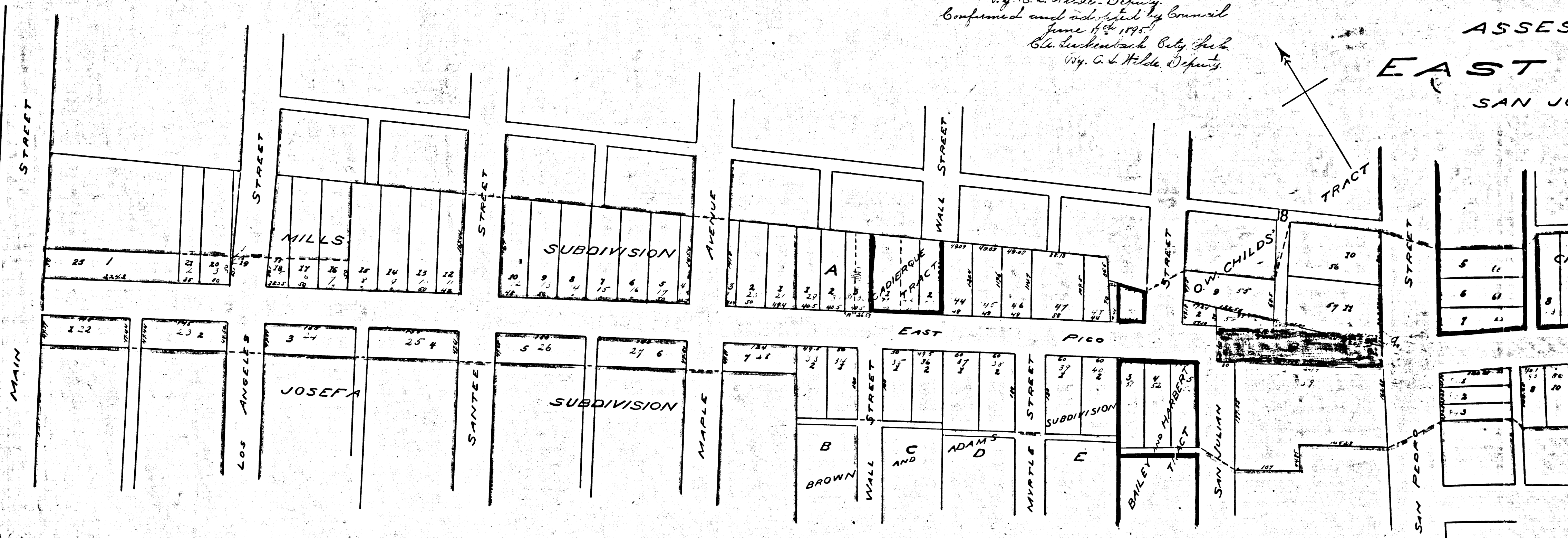
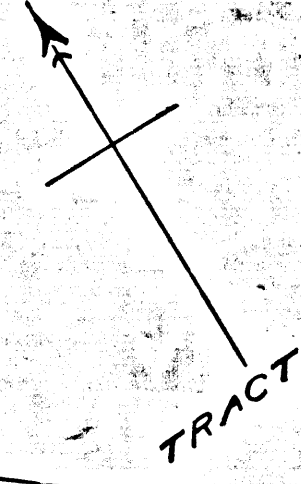


Filed May 11th 1895
 C. L. Schenk
 City Clerk
 By C. L. Hilde, Deputy
 Confirmed and adopted by Council
 June 14th 1895
 C. L. Schenk, City Clerk
 Wm. C. Hilde, Deputy

ASSES
 EAST
 SAN JU

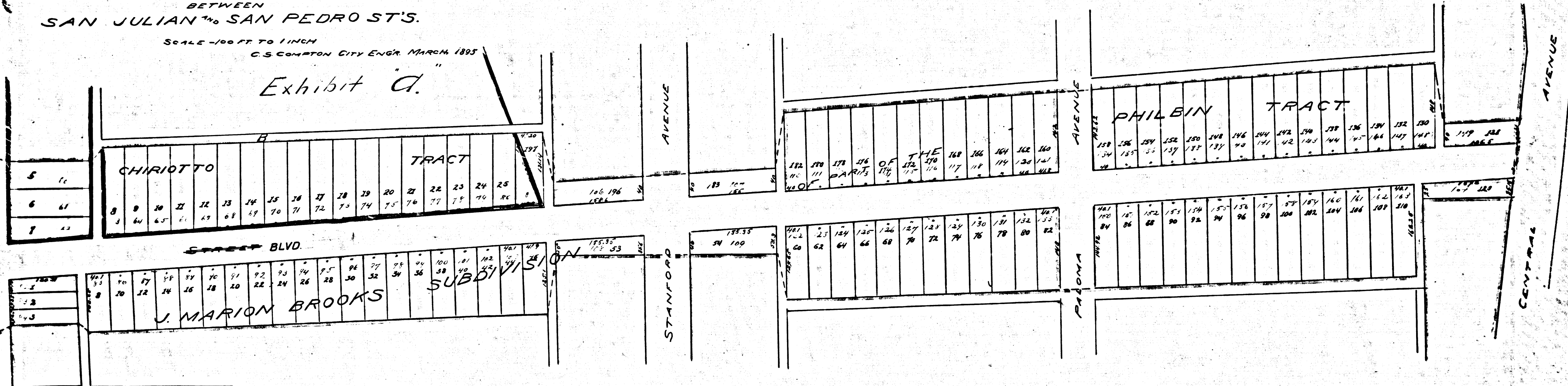


R.F. 81
 A1 OF A2

MAP
OF THE
ASSESSMENT DISTRICT
FOR THE OPENING OF
EAST PICO STREET
BETWEEN
SAN JULIAN AND SAN PEDRO ST'S.

SCALE - 100 FT. TO 1 INCH
C.S. COMPTON CITY ENGR. MARCH 1895

Exhibit "d."



R.F. 81
A 2 OF A 2