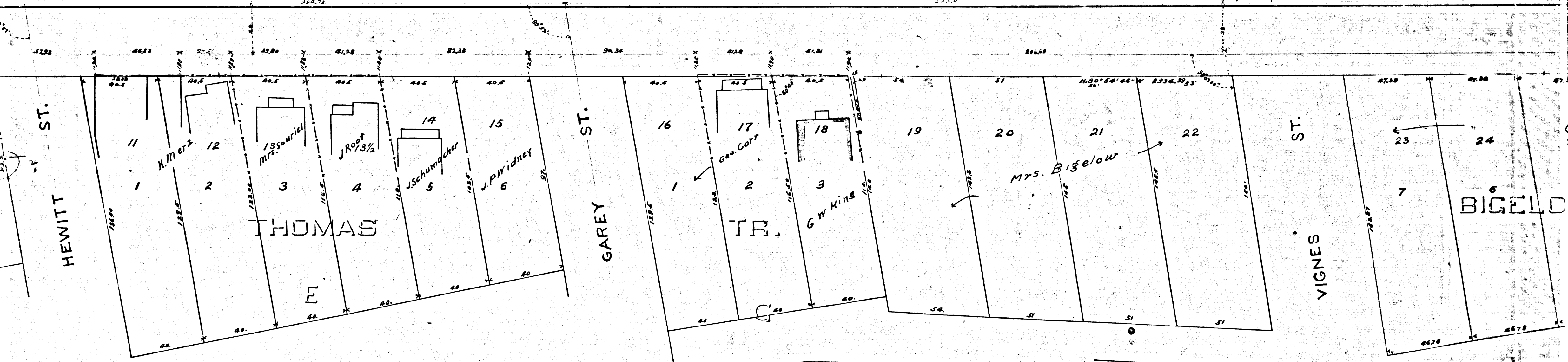
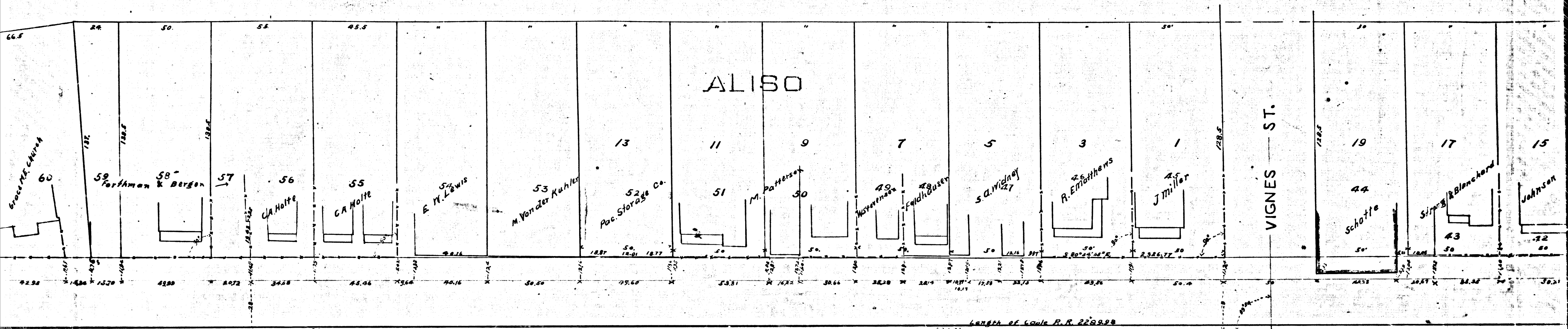


R.F.	82	
A1	OF	A4



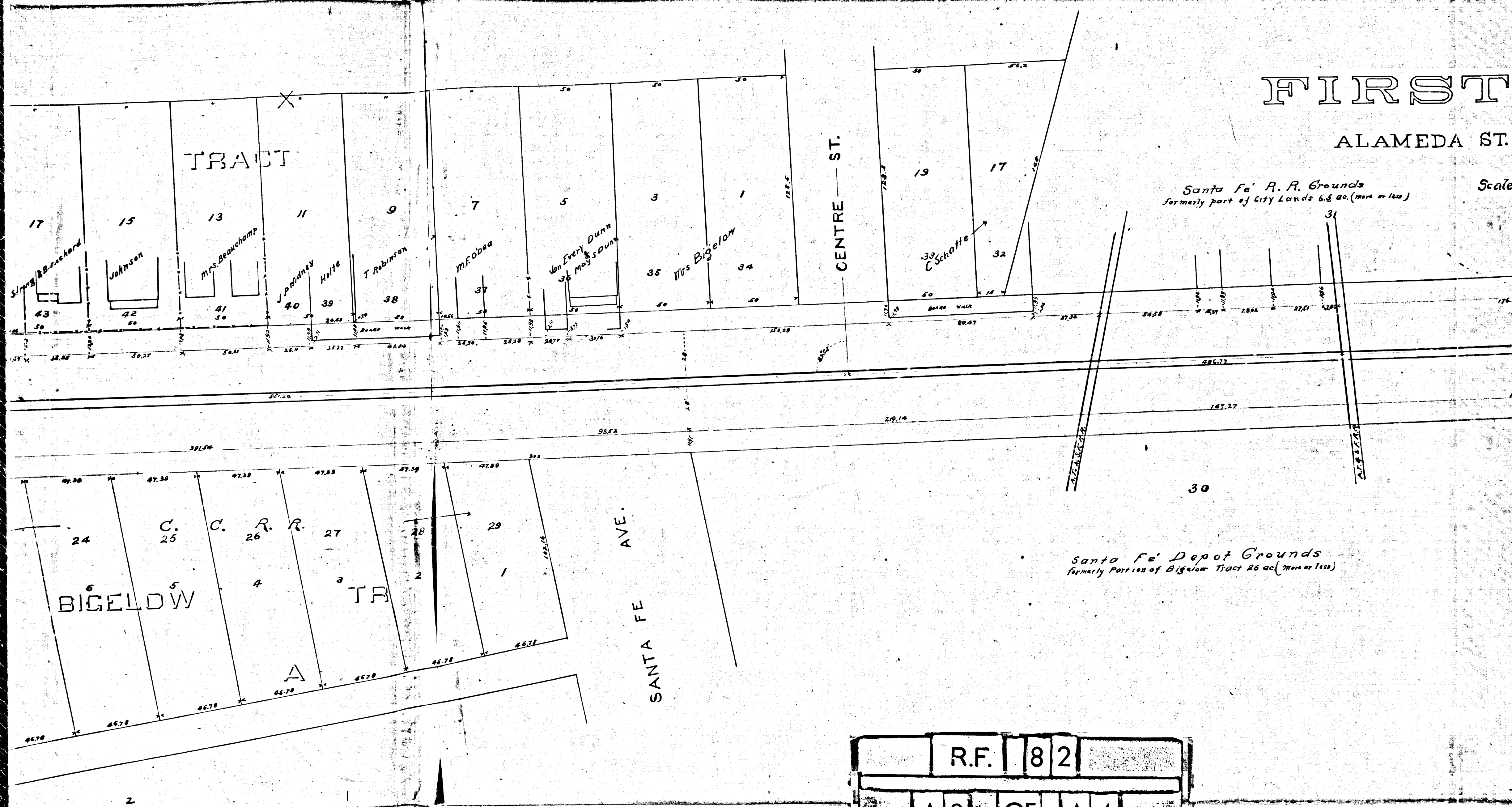
R.F. 82
 A2 OF A4

FIRST

ALAMEDA ST.

Santa Fe R. R. Grounds
formerly part of City Lands 6.5 ac. (more or less)

Scale-



	R.F.	82	
	A3	OF	A4

MAP OF FIRST STREET FROM ALAMEDA ST. TO THE LOS ANGELES RIVER

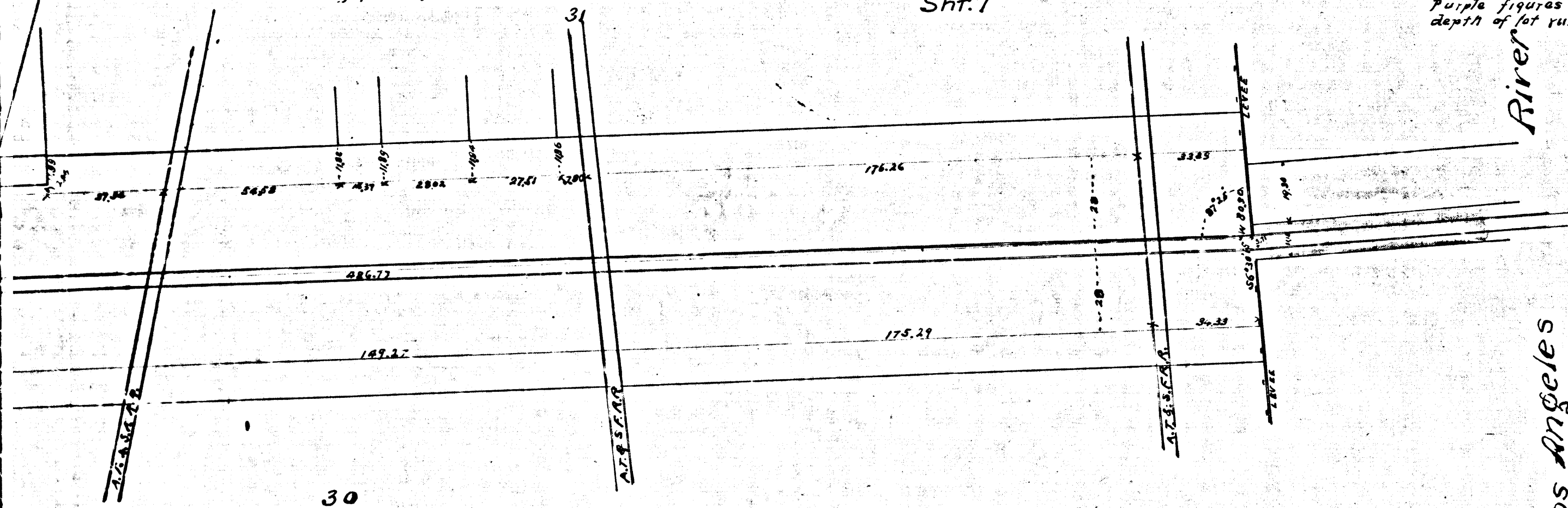
FILED IN RECORDERS OFFICE
AT REQUEST OF CITY CLERK
DEC. 10th 1889

JOHN W. FRANCIS CO. RECORDER
for W. F. X. PARKER
DEPUTY

Santa Fe' R. R. Grounds
formerly part of City Lands 6.5 ac. (more or less)

Scale - 30 feet to one inch
Sht. 7

Note: Figures in black are from records. Where showing depth of lot they run to 80ft. street, and are 10ft less than recorded. Purple figures are approximate and where showing depth of lot run to the old line of street.



This Map filed by Commissioners
Sept. 23rd 1889

Freeman G. Seed (copy)
City Clerk

Confirmed and Adopted by the Council of
the City of Los Angeles at its meeting
of Oct. 28th 1889

Freeman G. Seed
City Clerk
by Geo. E. Seip Deputy
(copy)

Santa Fe' Depot Grounds
formerly Portion of Bigelow Tract 26 ac. (more or less)

	R.F.	8	2	
	A	4	OF	A
	4			4