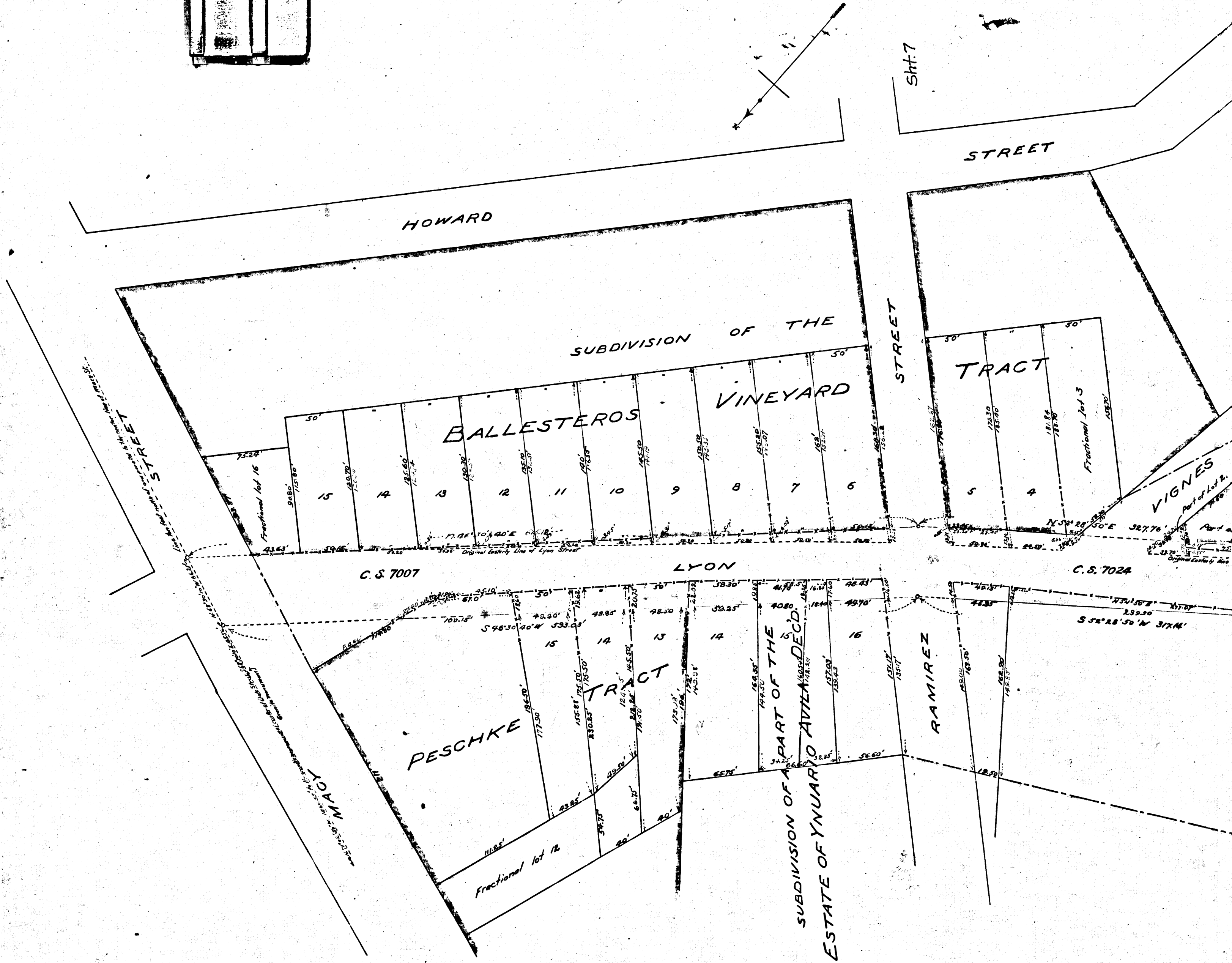


MAP
 SHOWING LAND TO BE TAKEN AND DISTRICT OF ASSESSMENT
 FOR THE
WIDENING AND STRAIGHTENING
 OF
LYON STREET
 BETWEEN
ALISO STREET AND MACY STREET
 IN THE
CITY OF LOS ANGELES
J.H. Dockweiler, City Engineer, August, 1898
 Scale - 50 feet to 1 inch.
 Ordinances 172517 and 5236 (New Series).

R.F. 183
 ALL OF A2

NOTE:
 Land to be taken, shown colored red.
 Exterior boundaries of Assessment district are shown colored green.
 Blue lines and figures show property lines and dimensions in those
 cases where the actual holdings differ from the recorded subdivisions.



OF ASSESSMENT

NING

Filed Nov 30 1898
at 2 o'clock PM

REET

1897, 1898

colored green.
shown in these
subdivisions.

| | | | |
|-----|------|-----|--|
| | R.F. | 83 | |
| A 2 | OF | A 2 | |

