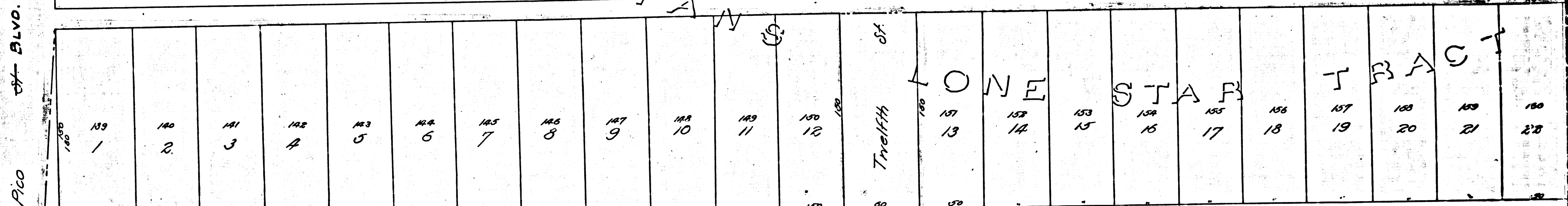


CLARK & BRYAN

LONE STAR TRACT



PICO ST BLVD.

PICO

A Lot 162 Clark and Bryans Lone Star Tract

N 0° 27' 30" W 222.32

B

C

FINNEY TRACT A

Granite Monument

1916

1916

1916

PICO ST

PICO

25

25

27

27

R.F. 89

A1 OF A4

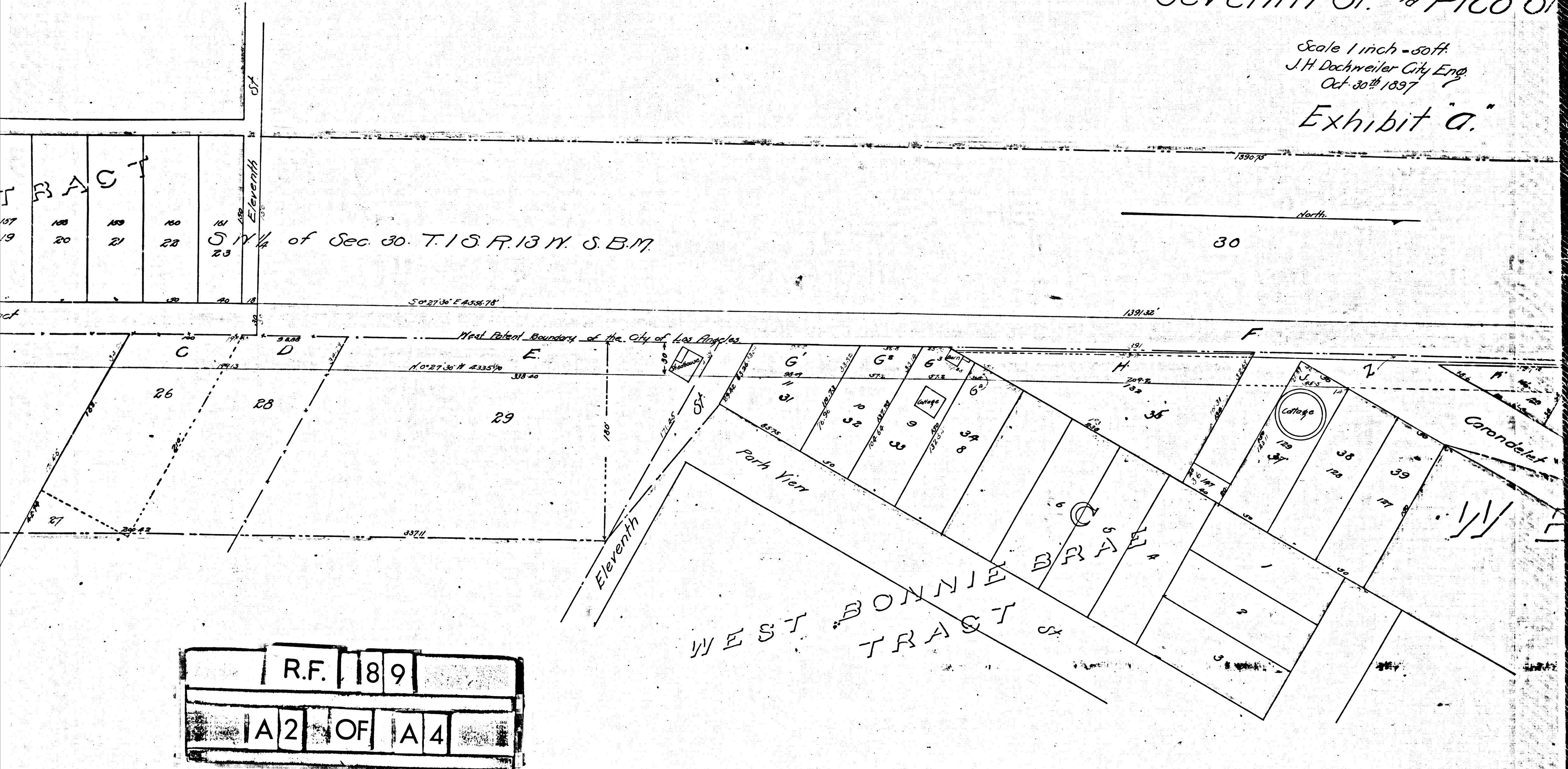
Confirmed and adopted by Council.  
March 21, 1898  
C. H. Hance, City Clerk.

Filed April 1, 1898

Map  
Showing the District of Assessment for the proposed opening  
**Hoover Street**  
between  
**Seventh St. and Pico St.**

Scale 1 inch = 50 ft.  
J. H. Dochweiler City Eng.  
Oct. 30<sup>th</sup> 1897

Exhibit "a."

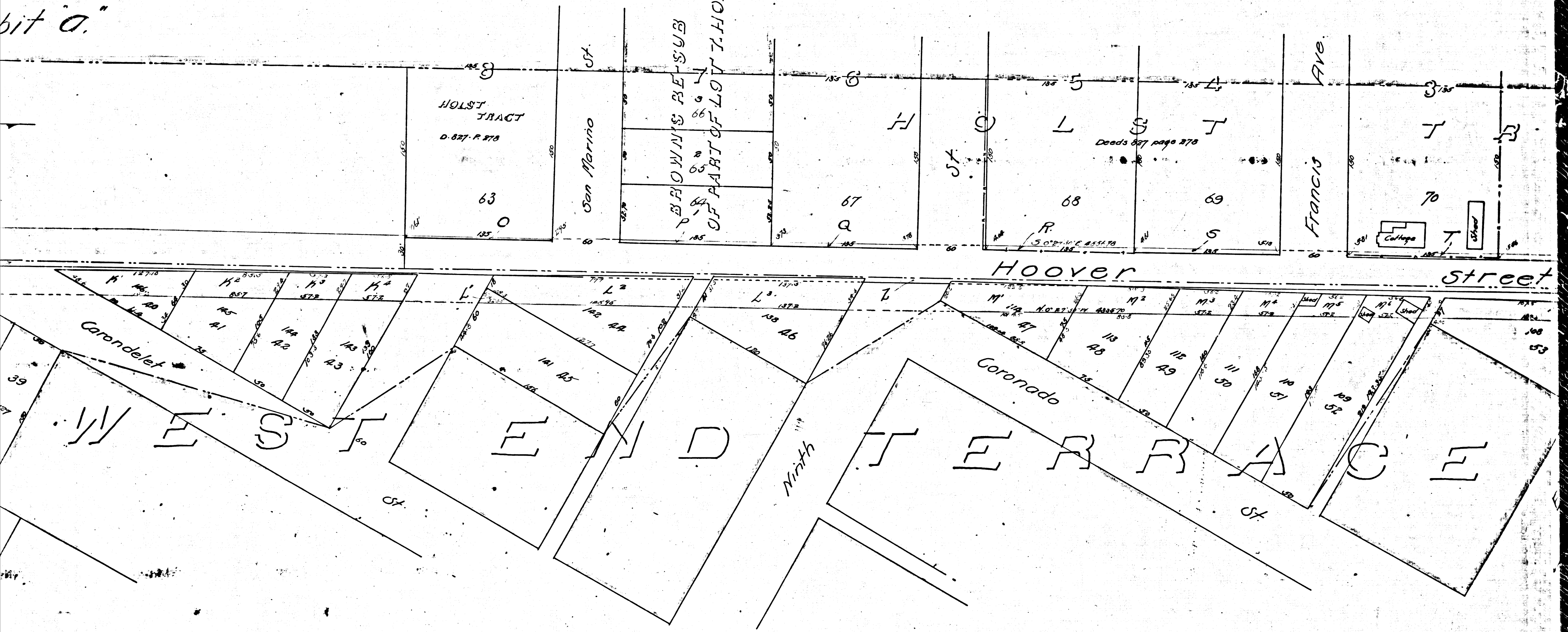


R.F.	189	
A2	OF	A4

the proposed opening & widening of  
Street  
and Pico St.

h = 50 ft.  
City Eng.  
1897  
bit a.

R.F. 89  
A 3 OF A 4



R.F. 89  
 A 4 OF A 4

