

Government map of City of St. Louis
Map of 1896

MAP
of the
ASSESSMENT DISTRICT
for the straightening of
MAIN STREET
BETWEEN
REPUBLIC ST. and MARCHESSAULT
UNDER ORDINANCE NO. 3262
Scale 1"=20'
Feb. 1896
C.S. Compton & City Eng

Exc.

S
ST.

NEW
HIGH

REPUBLIC ST.

R.F. 90
A1 OF A2

MAIN
ST.

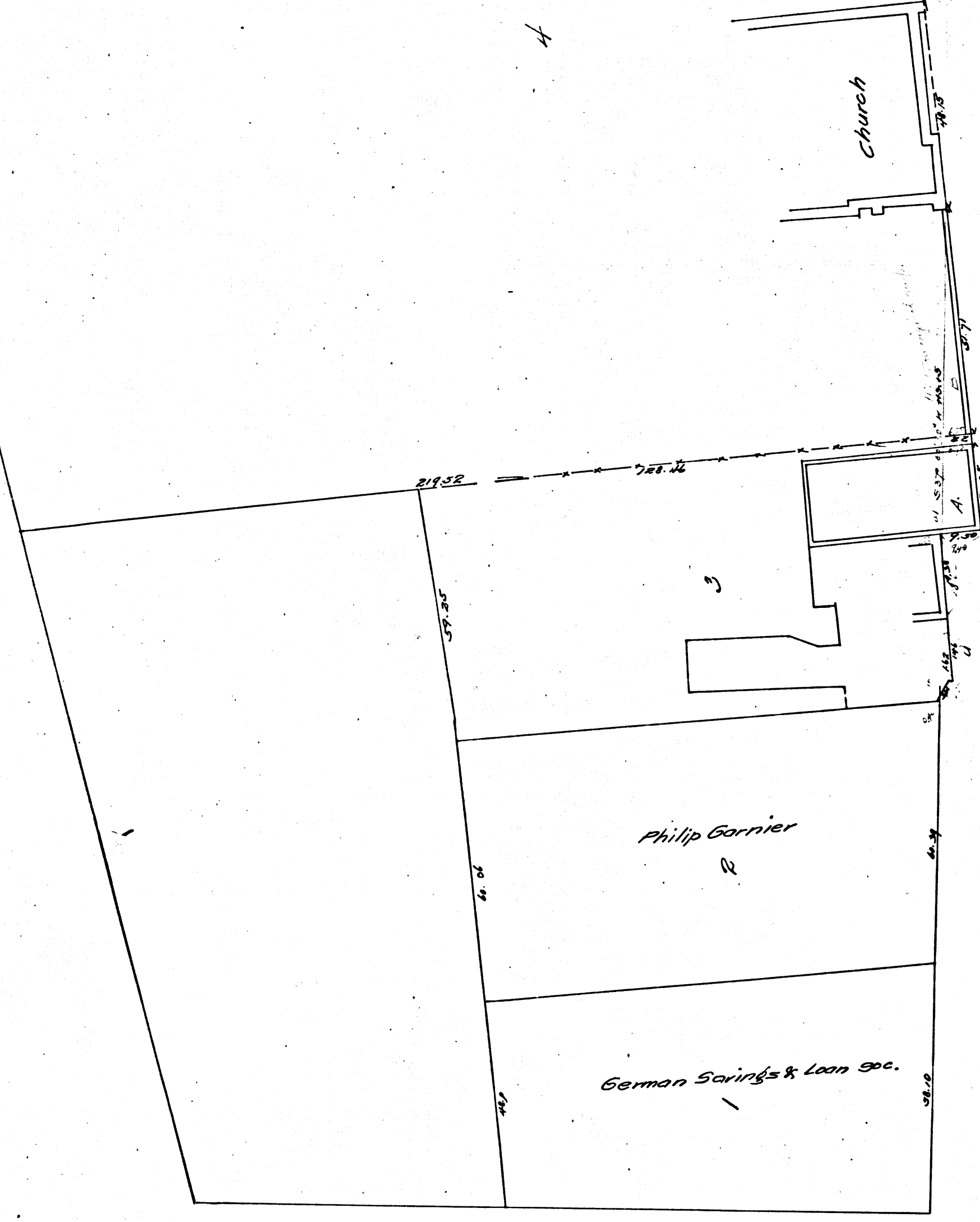
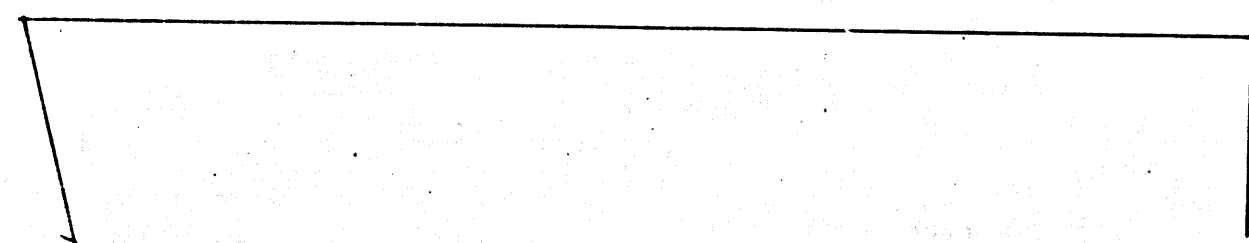
PLAZA ST.

PLAZA

Church

Philip Garnier

German Springs & Loan Soc.



Filed May 29 1896

MAP
of the
Assessment District
for the straightening of
MAIN STREET
BETWEEN

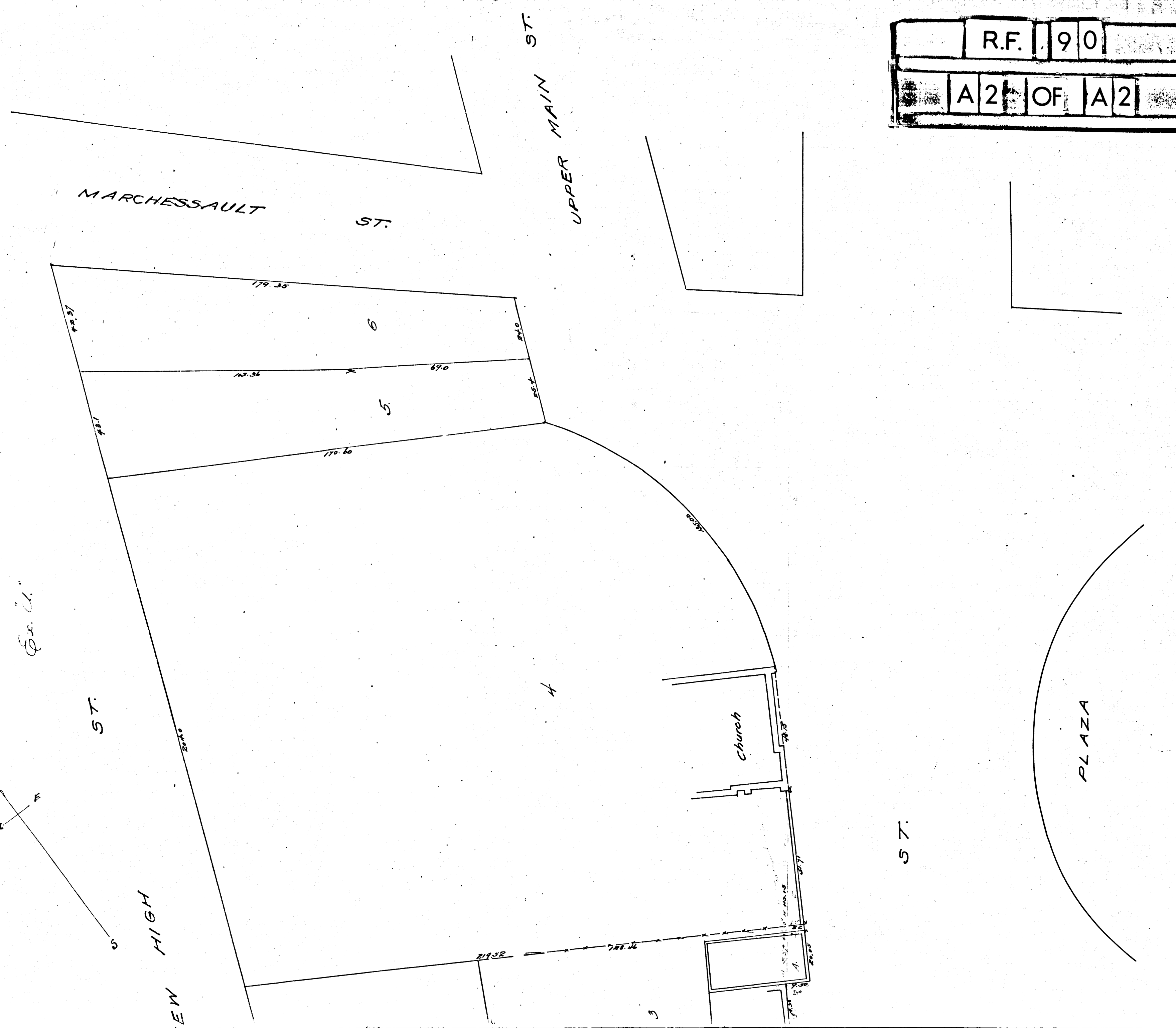
PUBLIC ST. and MARCHESSAULT

UNDER ORDINANCE NO 3212

Scale 1" = 20'

Feb. 1896 C.S. Compton & City Eng

Ex. U.



R.F.	90
A 2	OF A 2