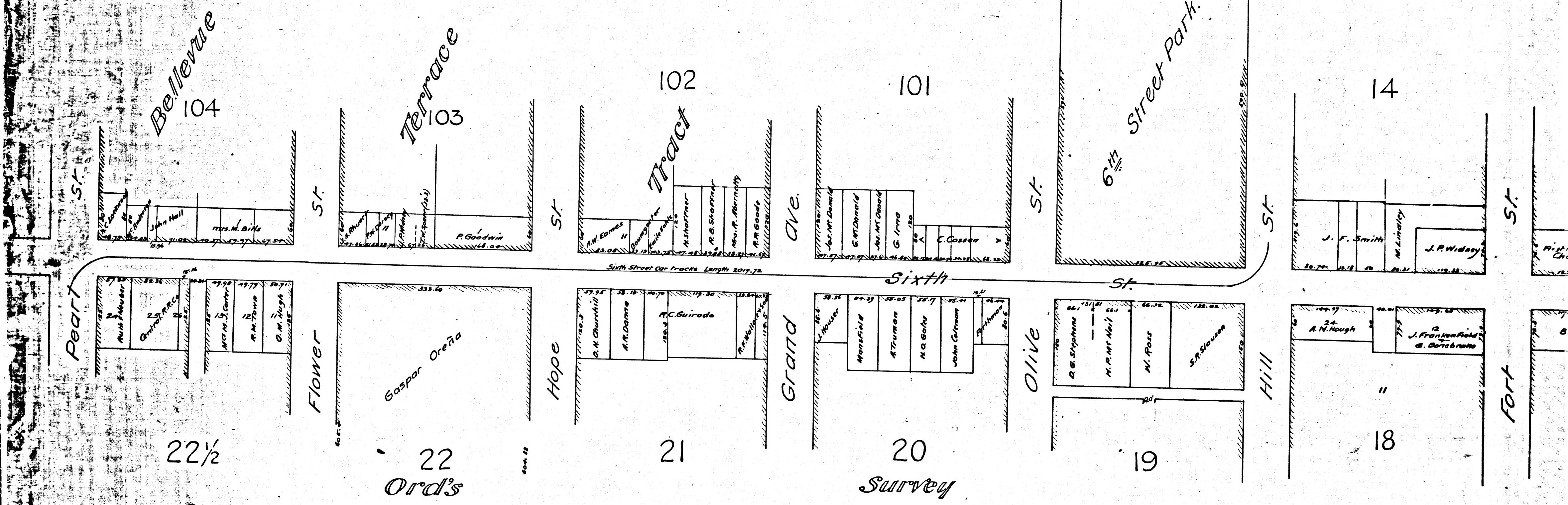


# SIXTH

PEARL ST.  
SHOWING PROPERTY

MAIN S  
Scale  
July 1889.

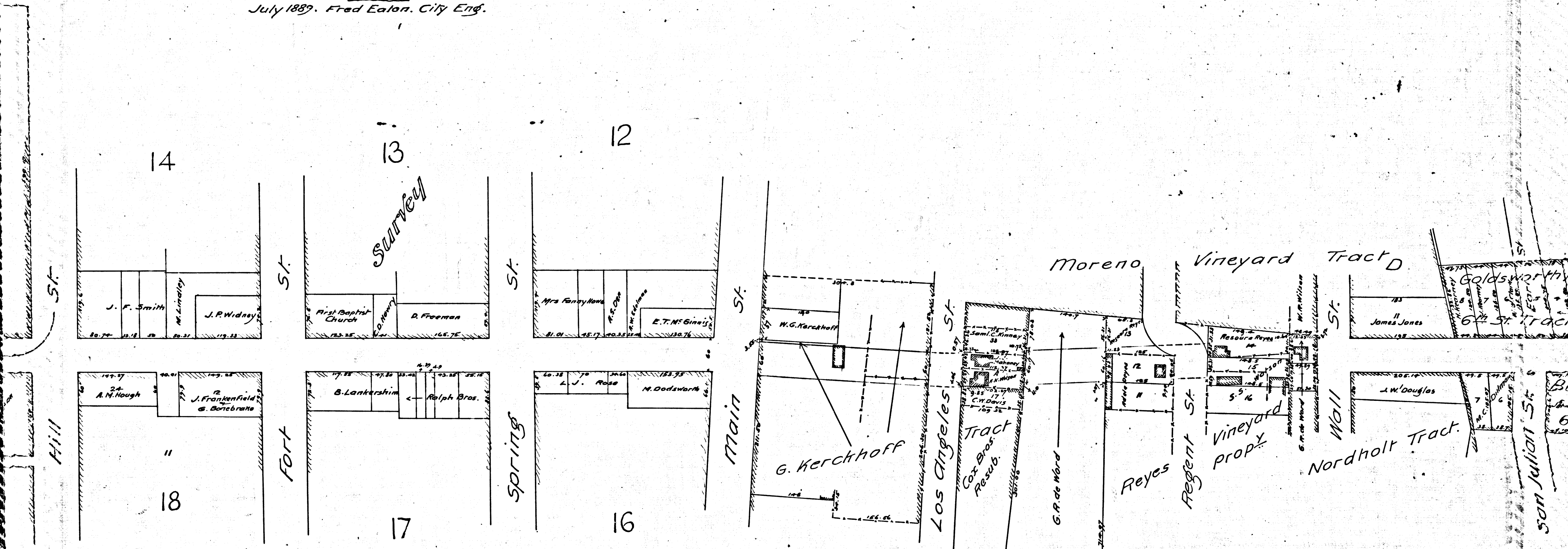


Handwritten notes in the bottom left corner, including 'L. B. King' and 'Pearl St.'.

R.F. 91  
A 1 OF A 4

# MAP SIXTH STREET

BETWEEN  
PEARL ST. AND ALAMEDA ST.  
SHOWING PROPERTY ASSESSED FOR OPENING  
BETWEEN  
MAIN ST. AND WALL ST.  
Scale 100 ft. to 1 inch  
July 1889. Fred Eaton. City Eng.



R.F. 91  
A 2 OF A 4

Ords

Hill

18

Fort

17

Springs

16

Main

St.

12

St.

Survey

13

St.

14

St.

Moreno

Vineyard Tract D

St.

James Jones

Goldsborough's  
6th St. Tract

G. Kerckhoff

Los Angeles

Tract  
Cox Bros.  
Resub.

G.P. de Ward

Reyes

Regent St.

Vineyard  
prop.

Nordholt Tract.

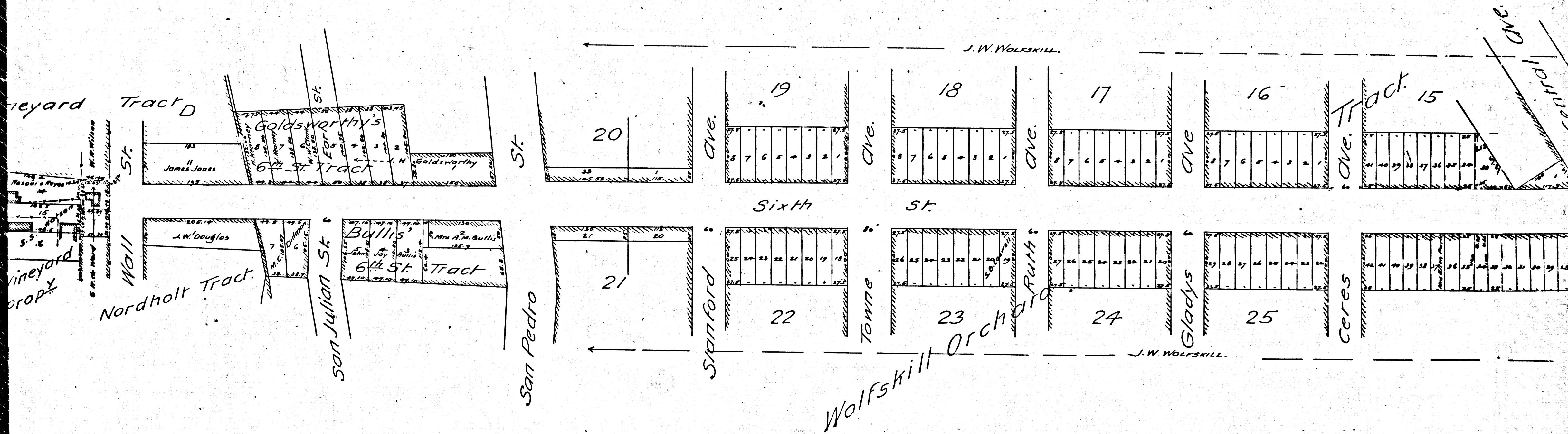
Wall

J.W. Douglas

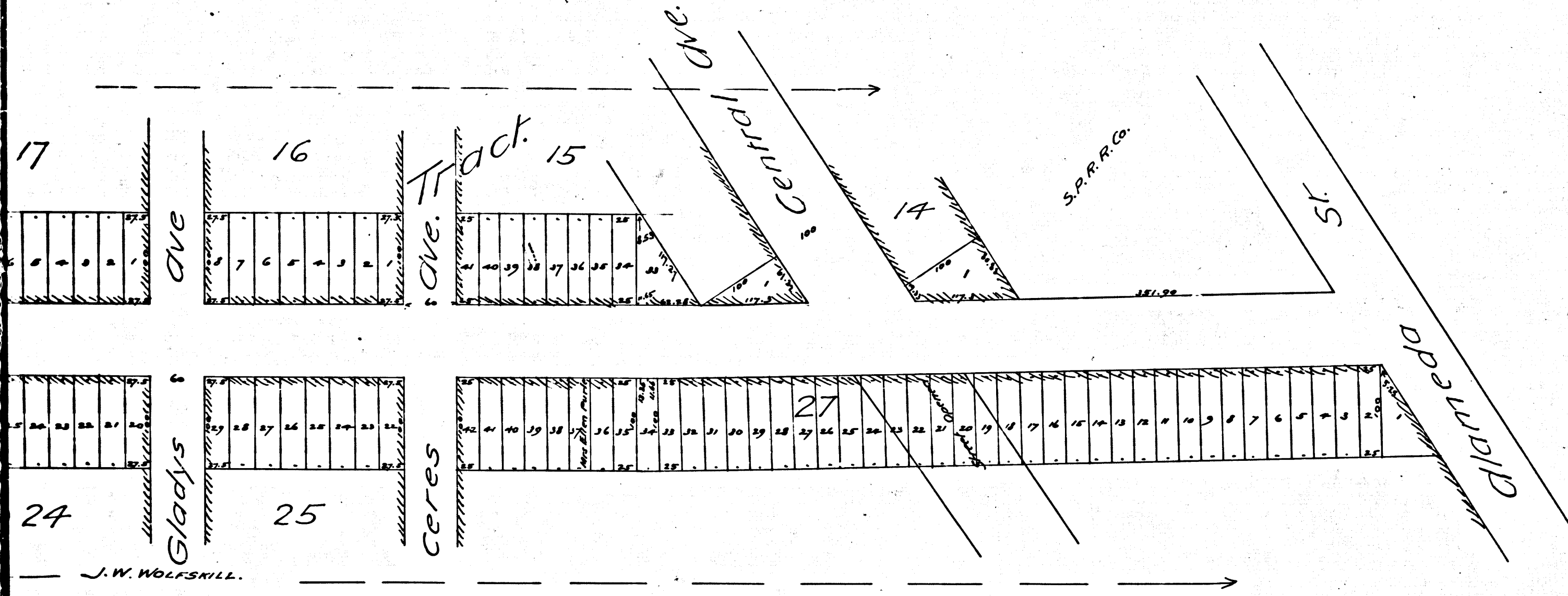
San Julian St.

Bull

6th St.



R.F. 91  
 A3 OF A4



Filed at the request of  
 City Clerk Nov 30, 1889.  
 No. 4  
 Recorder's Office

J. W. WOLFSKILL.

	R.F.	91	
A 4	OF	A 4	