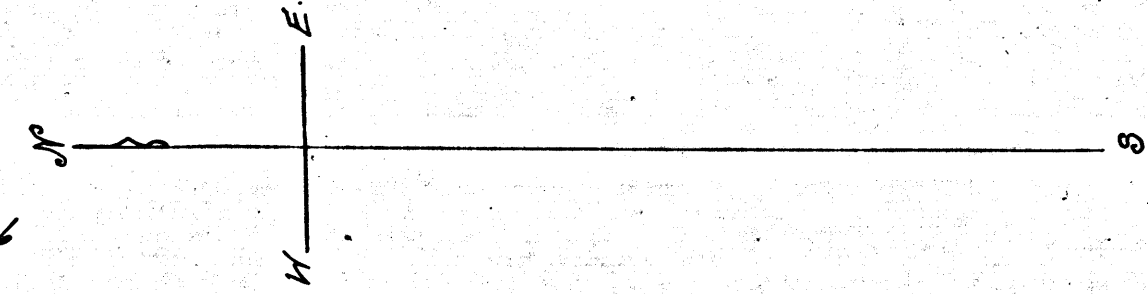


Diagram.

Showing the Assessment dist. and the land to be taken for the widening of Lake Avenue in the City of Pasadena from the South line of Colorado to the South line of San Pasqual Street, also showing the lands assessed & the relative location of each district, block, lot, portion of lot or parcel of land and its dimensions each block, lot, or portion of lot taken or assessed is designated by the numbers marked thereon in red ink. Herein the mark ' means feet. Figures in black ink next to property lines show each the length of said line in feet. Other figures in black ink show the numbers of the lots. Green shows portion of lands to be taken for the widening of said Lake Avenue. Green figures show the dimensions of said portions of land. Red show the boundaries of assessment district. Solid black lines show original lot lines. Broken black lines show subdivisions of original lots. Blue and yellow shadings show the boundaries of subdivisions named The diagram

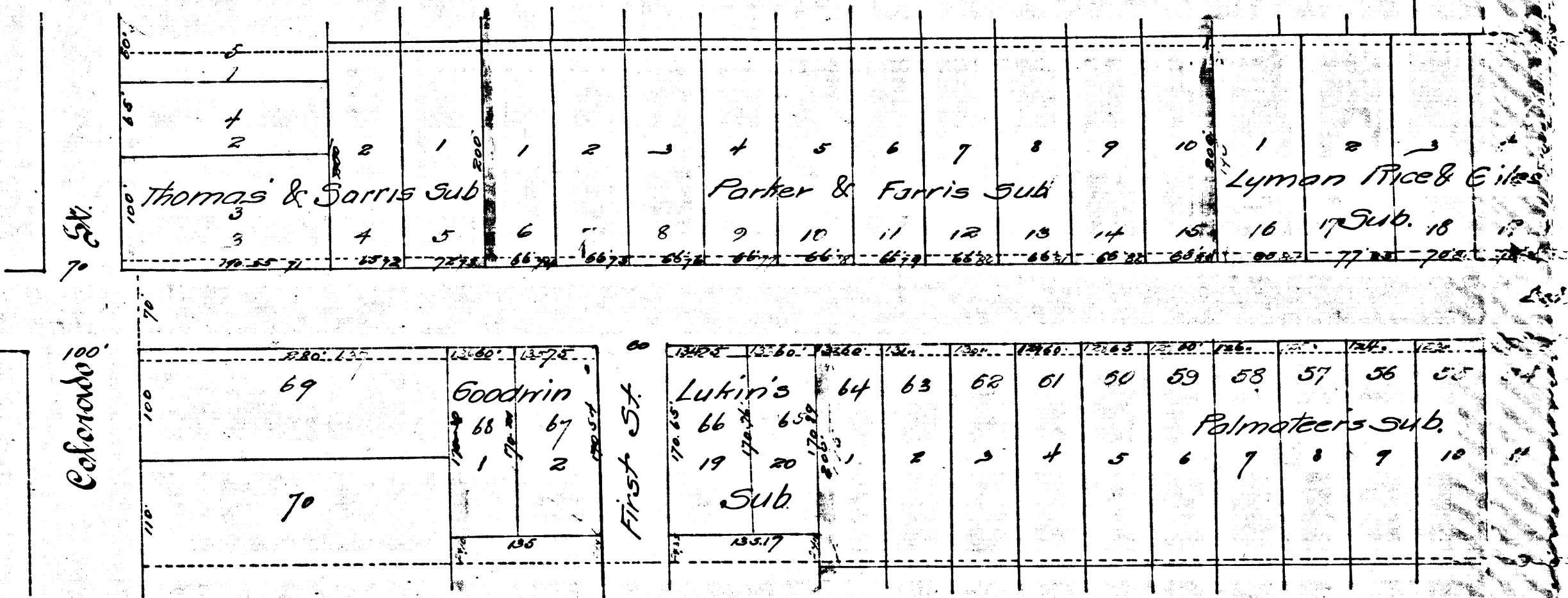
Pasadena Cal. May 1896
H. B. Clapp City Engineer.

Confirmed and Adopted by
Resolution No 935 of the Board
of Trustees Pasadena Aug 24 1896

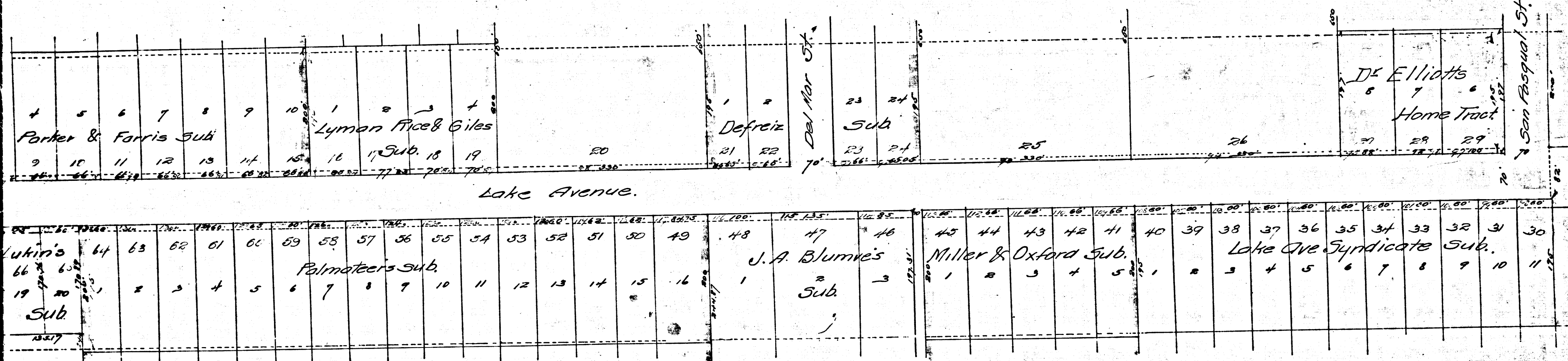


- SEE D. 6-202
 : : : : 203
 : : : : 204
 : : : : 205
 : : : : 207

Index #8



	R.F.	94	
A1	OF	A2	



Lake Avenue.

Index #8

R.F. 94
 A 2 OF A 2