

Filed at the request of Freeman G. Teed, City Clerk.
 Dec. 29, 1892, at 5 P.M. past 1 P.M.
 J. A. Kelly, Co. Recorder.

R.F. 98
 A1 OF A2

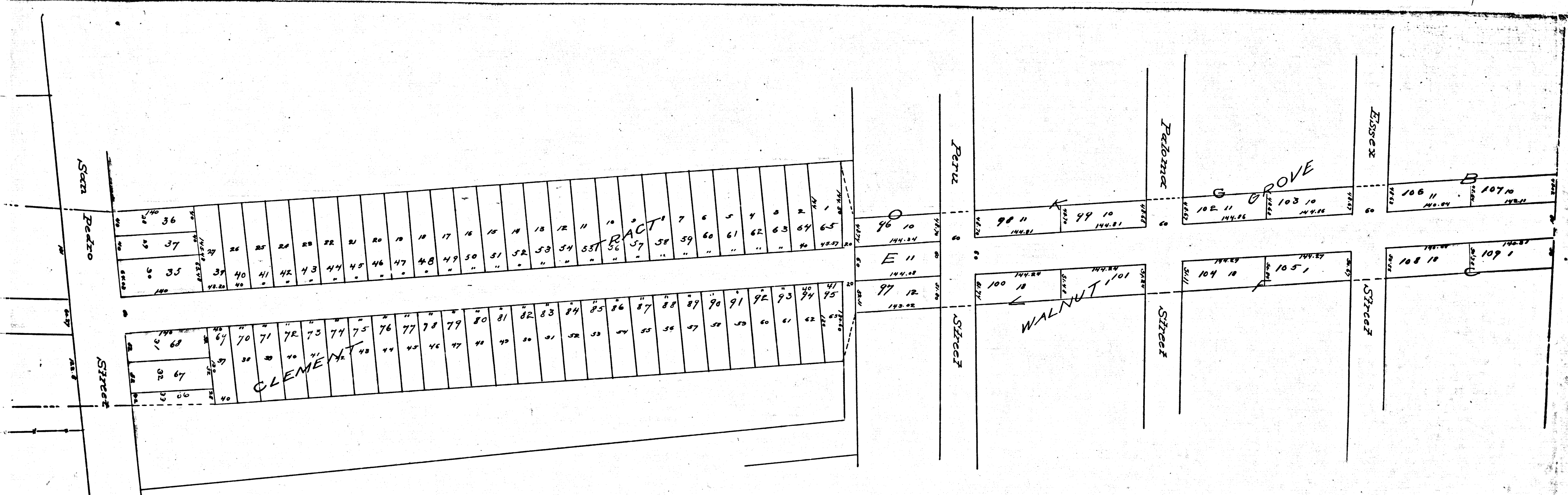


Exhibit A
MAP
 OF
ASSESSMENT DISTRICT
 FOR THE
OPENING OF SIXTEENTH STREET
 BETWEEN
MAPLE AVE. & PERU ST.

J. H. DOCKWEILER CITY ENG. MAY 1892.

R.F. 98
 A2 OF A2