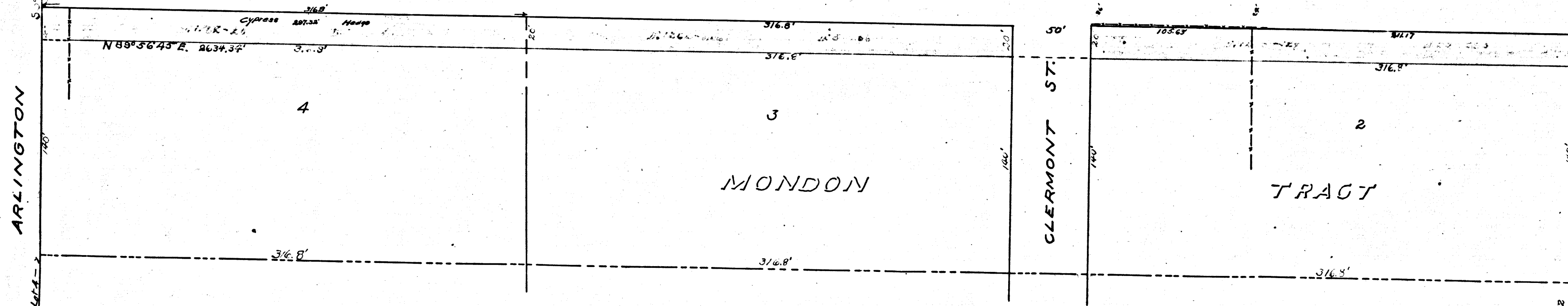


Center of Section 35

WASHINGTON



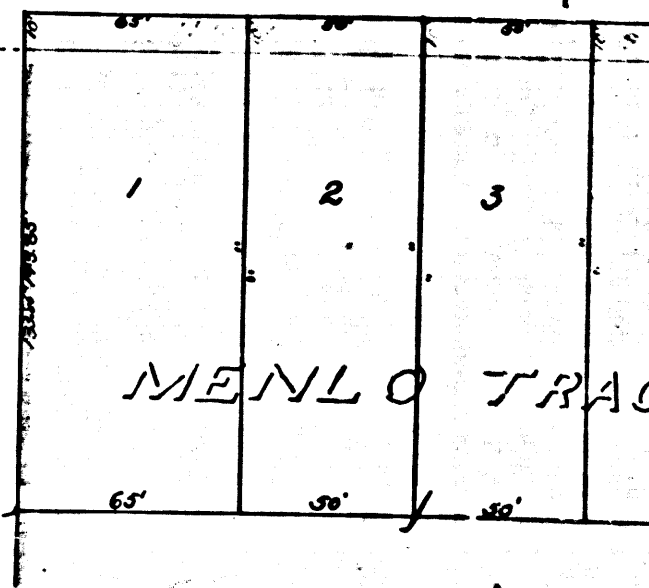
ARLINGTON ST.

CLERMONT ST.

MONDON

TRACT

MARY ST.



MENLO TRACT

R.F. 100  
A1 OF A9

111233-277

113-267

1018.44'

73'

73'-29'

111233-277

113-267

285.85'

200.56'

200.66'

ST.

60'

ST.

HERMOSA

733.36'

735'

735'

111277-1

1115-270

849'

N60°37'45" E

1	2	3	4
MENLO TRACT			
65'	30'	30'	68.8'

R.F.	100
A 2	OF A 9

T. J. S. R. 14 W.

AVE.

T. J. S. R. 14 W.

WASHINGTON ST.  
HEIGHTS

OXFORD AVE

AND PICO ST.  
TRACT

DENBYS  
ADDITION

2 1

2 1

4

3

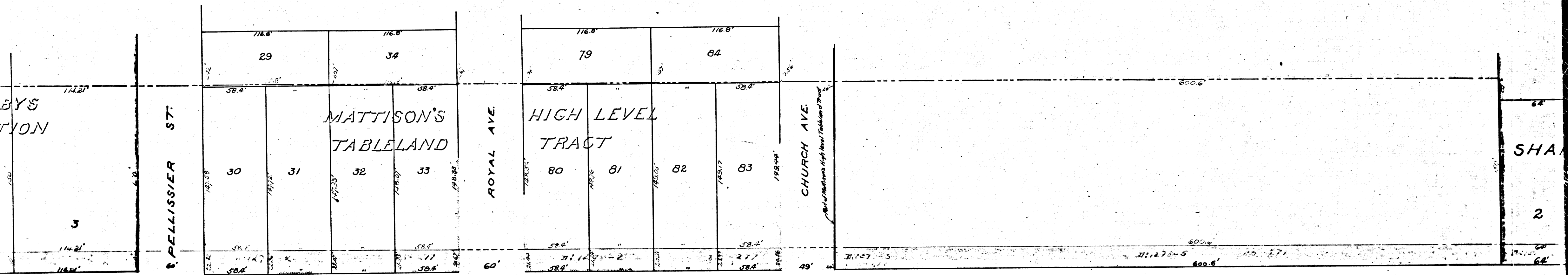
SEC. 35

WESTERN

SEC. 36

R.F. 100

A 3 OF A 9

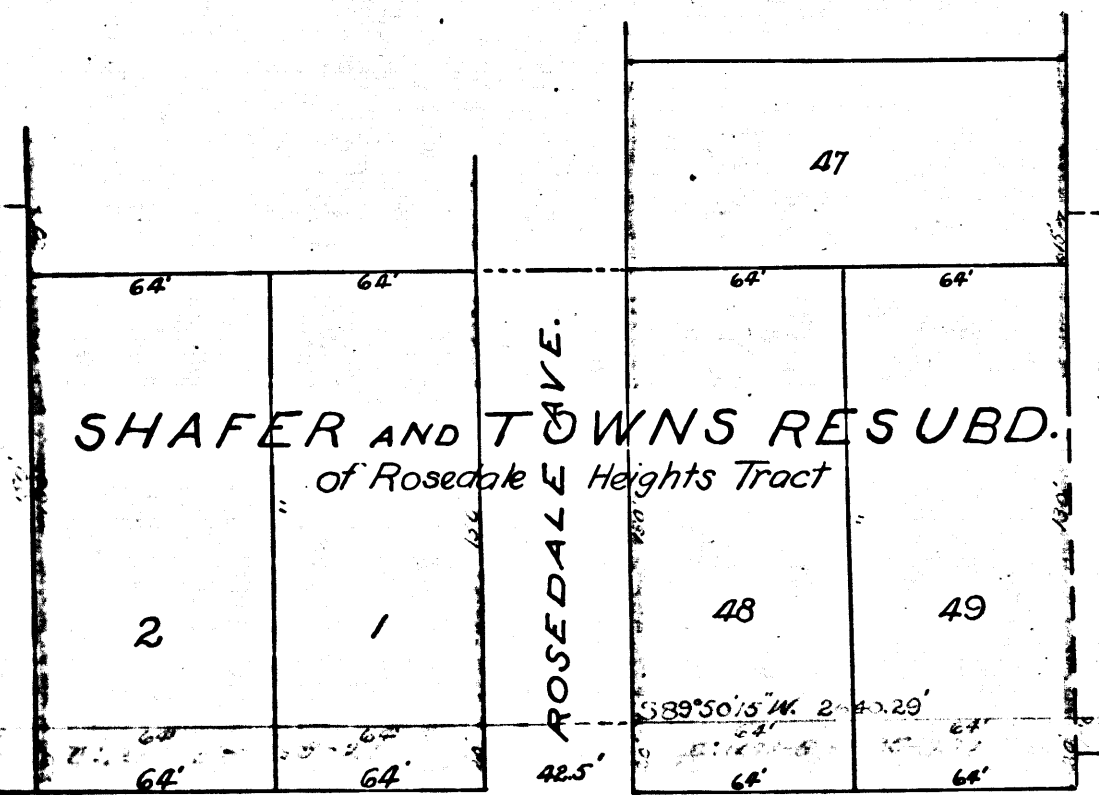
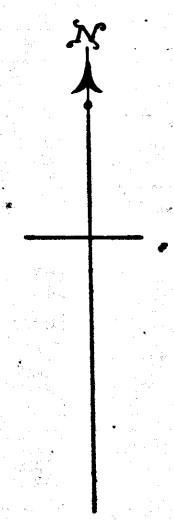


3

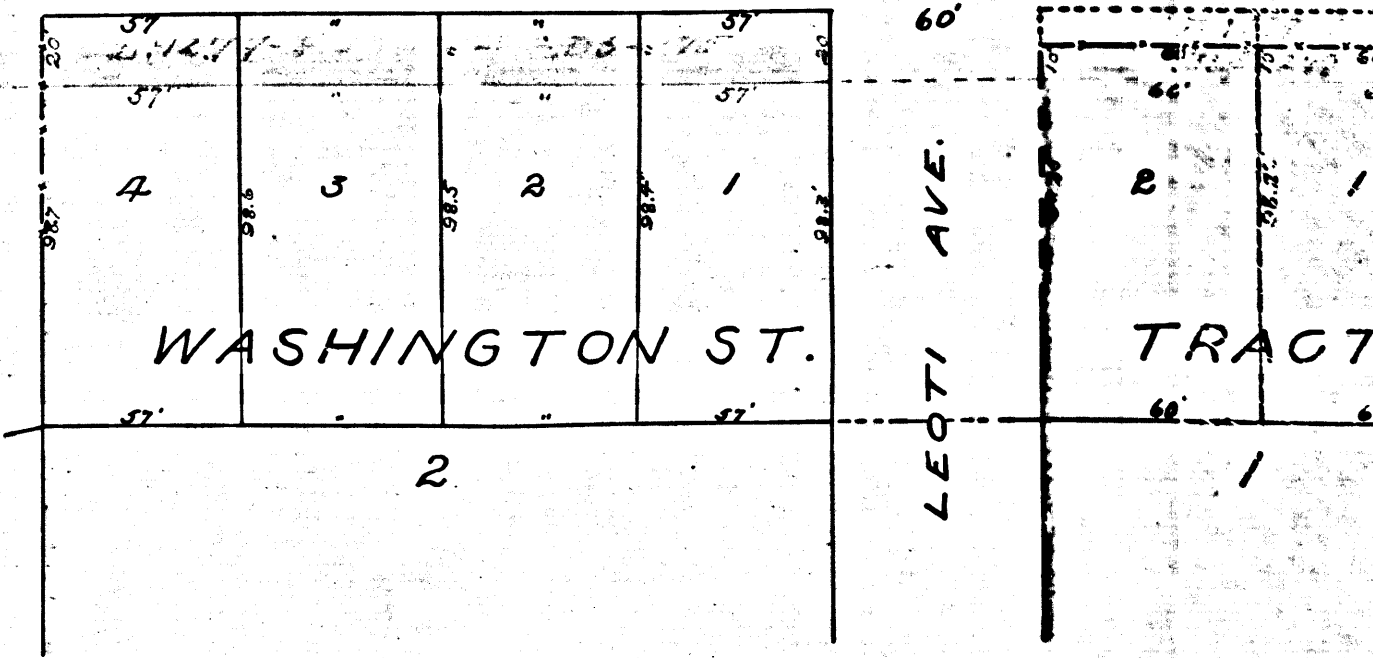
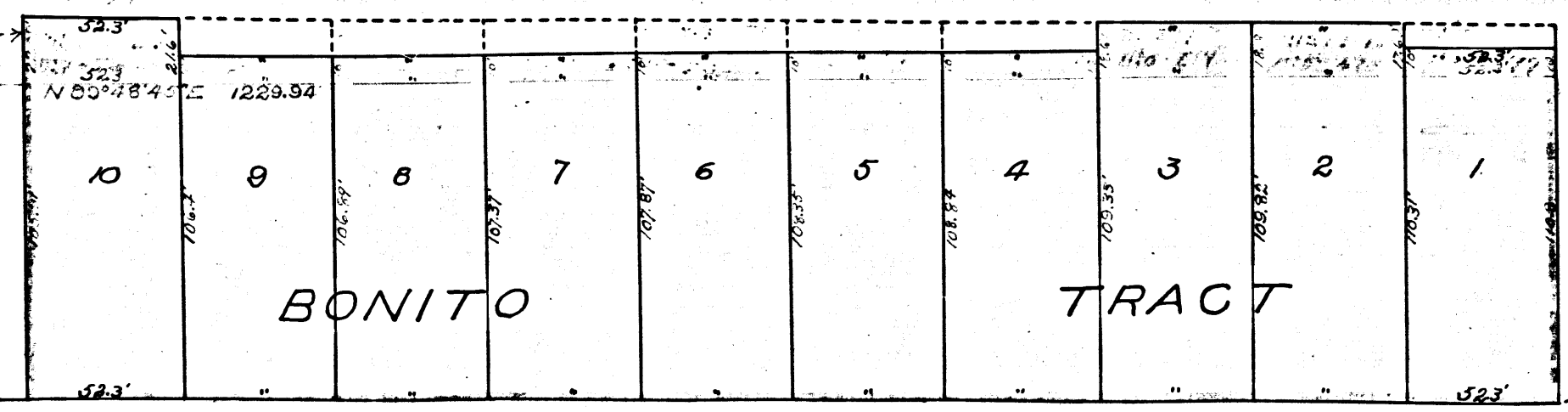
R.F.	100
A 4	OF A 9

4

MAP SHOWING  
ASSESSMENT  
FOR THE WASHINGTON  
TRACT  
FROM WEST PATENT BOUNDARY TO  
CITY OF LOS ANGELES  
under Ordinance 4557 (New Series)  
Scale 1 inch = 50 feet  
The land to be taken for street purposes  
The exterior boundaries of the assessment



ROSEDALE CEMETERY



R.F. 100  
A 5 OF A 9

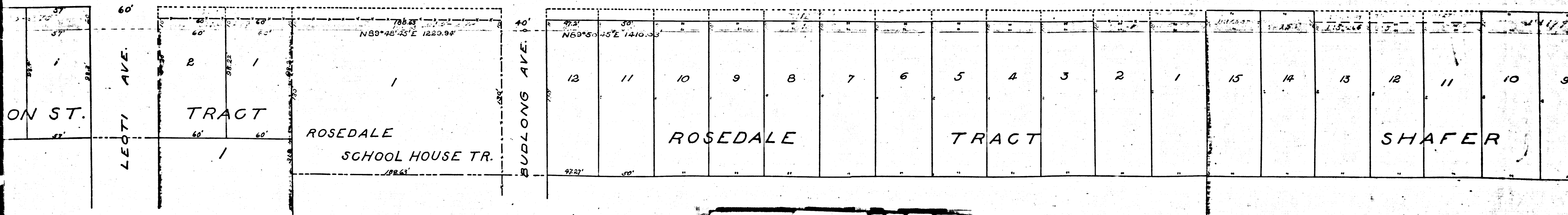
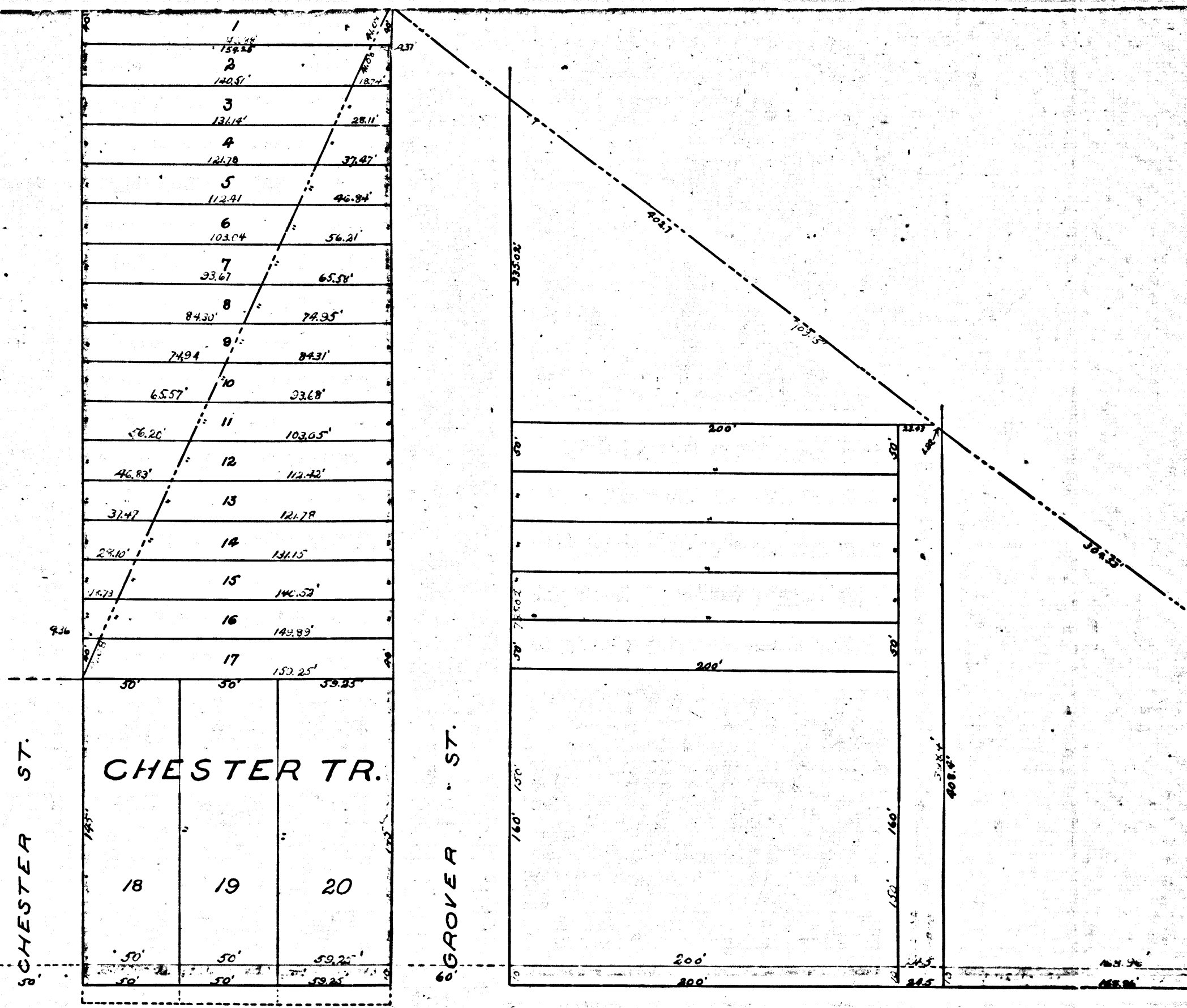
4

MAP SHOWING THE  
ASSESSMENT DISTRICT  
FOR THE WIDENING OF  
WASHINGTON STREET

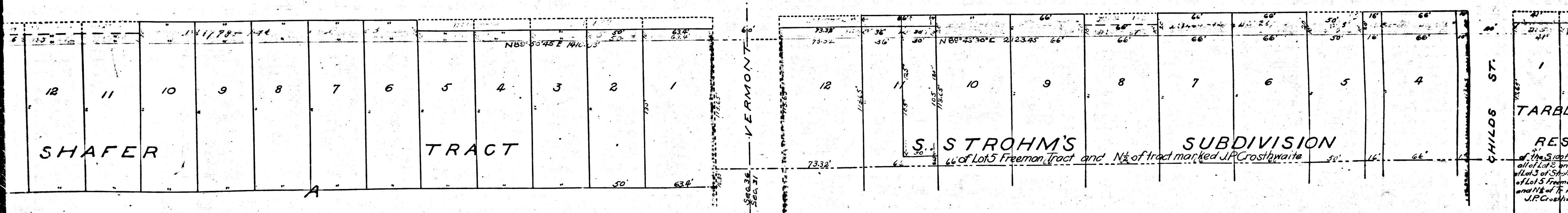
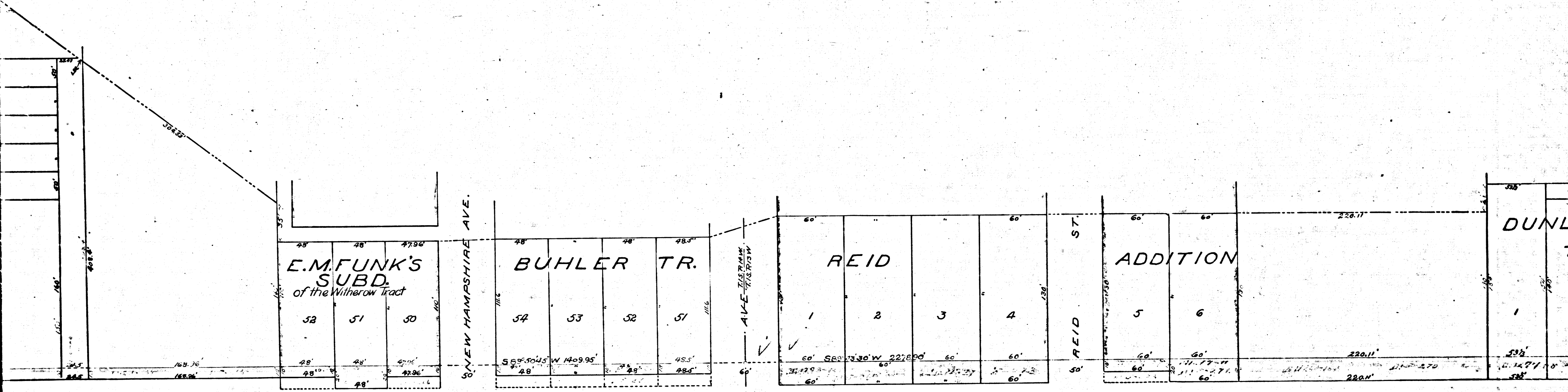
FROM WEST PATENT BDY. TO ARLINGTON STREET  
CITY OF LOS ANGELES, CAL.  
under Ordinance 4557 (New Series) approved September 25, 1897  
Scale 1 inch = 50 feet J.H. Dockweiler City Engineer  
The land to be taken for street purposes is shown colored red  
The exterior boundaries of the assessment district are shown colored green

Filed Sept. 29 1898  
at 40 min past 4 P.M.

DALE CEMETERY



R.F. 100  
A 6 OF A 9



R.F. 100  
 A7 OF A9

DUNLAP TRACT

1 2 3

AURORA TRACT

17 18 19 20 21

KENNEBEC SUBDIVISION OF BLOCK A

7 6 5 4 3 2 1

TRACT

1 2 3

REEVE

10 9 8

WASHINGTON

Electric Railway

TARBLE'S RESUBD

1 2

C.W. DAVIS' SUBD.

24 23 22

JEFFERS TR.

B A

C.W. DAVIS' SUBD.

3 2 1

SUBDIVISION

5 4 3 2 1

FREEMAN TR.

Part of Lot 2 4

R.F. 100

A 8 OF A 9

