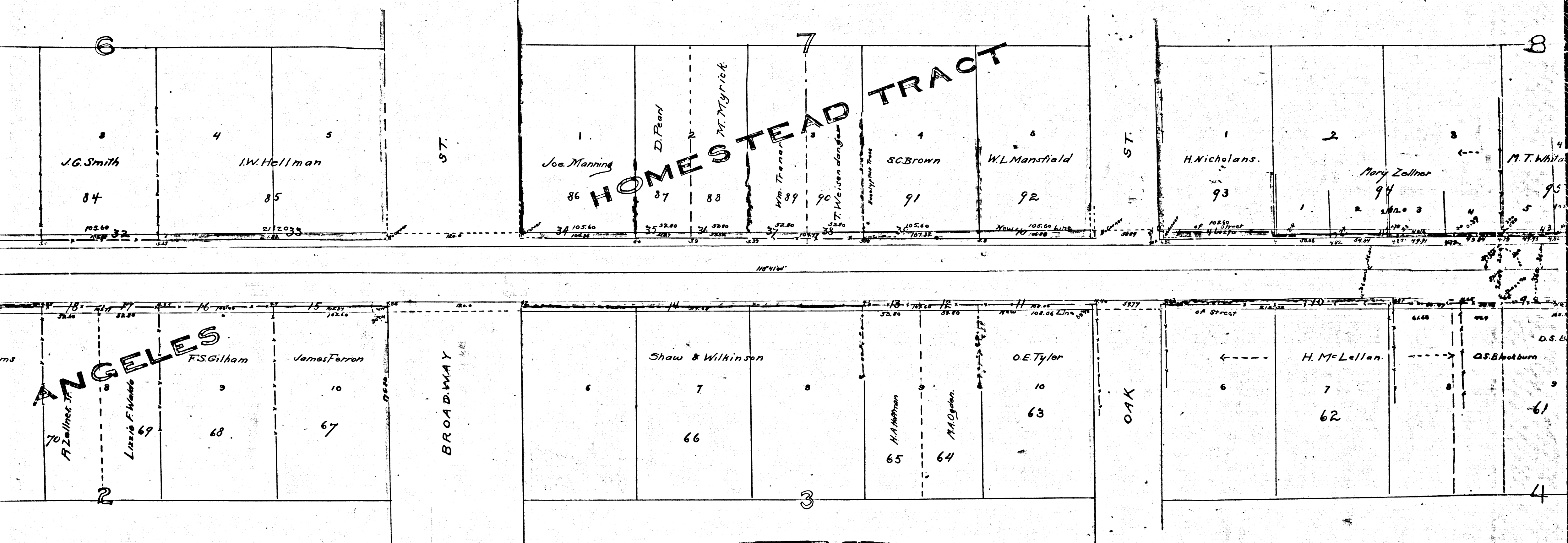
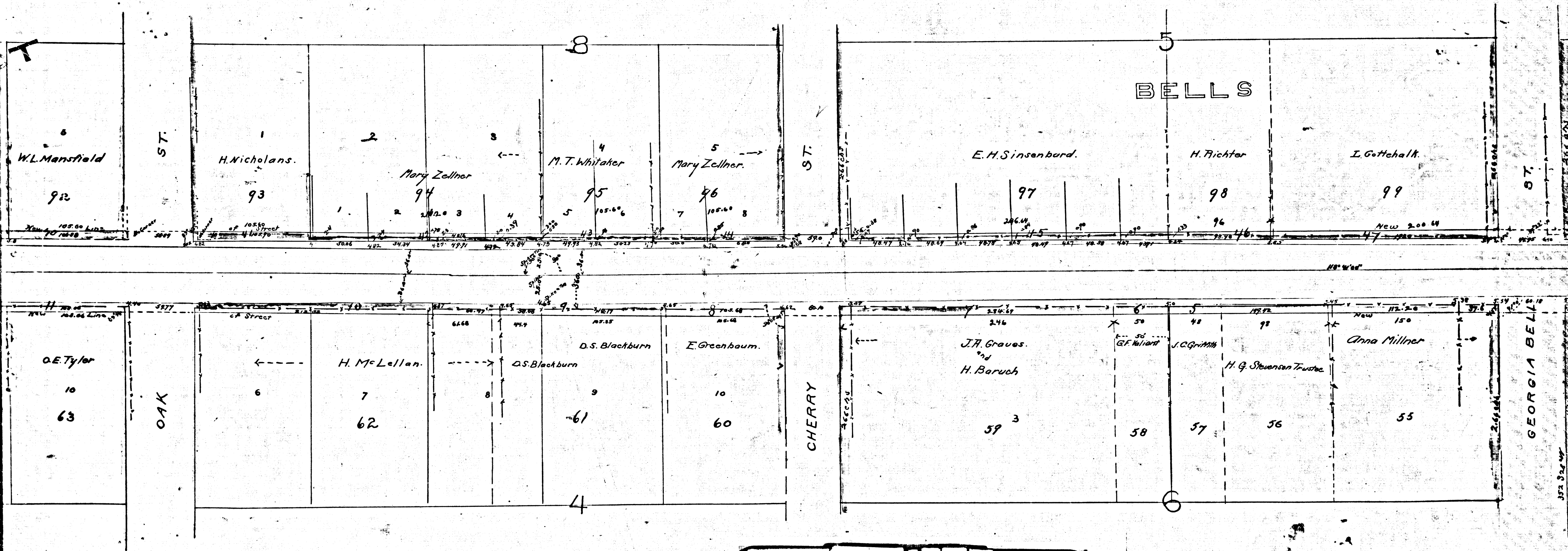


R.F. 102
 A1 OF A4



R.F. 102
 A 2 OF A 4

MAP
OCEAN STREET
 FROM
 WEST BOUNDARY OF FIGUEROA
 TO
 BUSH STREET.
 SURV JULY 1889. FRED EATON C.Y. ENG.
 SCALE 50 FT TO 1 INCH.
 Exhibit 9

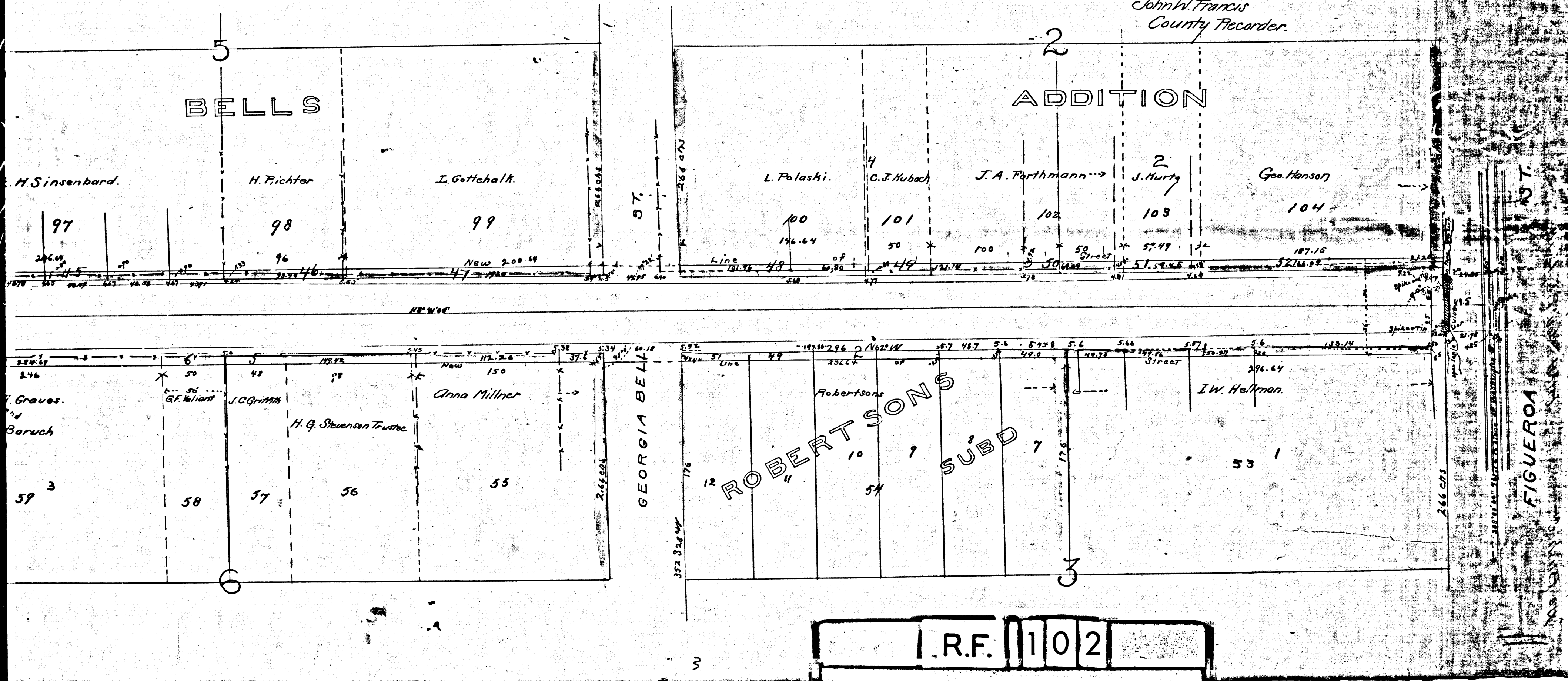


R.F. 102
 A3 OF A4

MAP
OCEAN STREET
WEST BOUNDARY OF FIGUEROA ST.

TO
BUSH STREET.
SURV JULY 1889. FRED EATON CY ENG.
SCALE 50 FT TO 1 INCH.
Exhibit 9

Filed at the request of F.G. Teed.
Nov. 26, 1890 at 14 min. past 10 AM.
John W. Francis
County Recorder.



R.F. 102
A 4 OF A 4