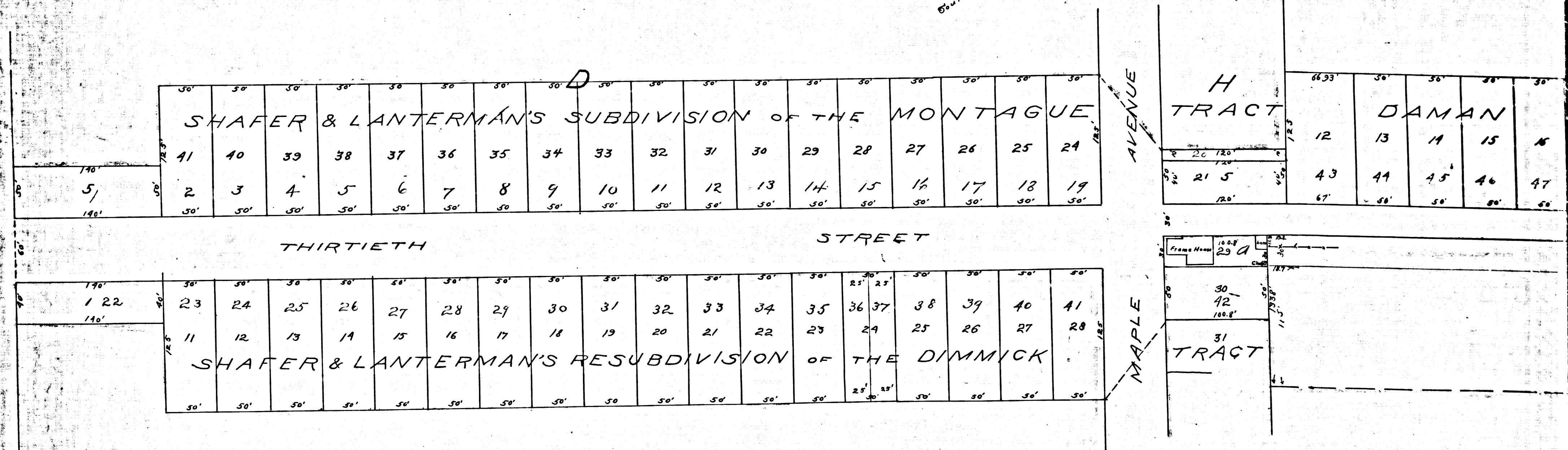
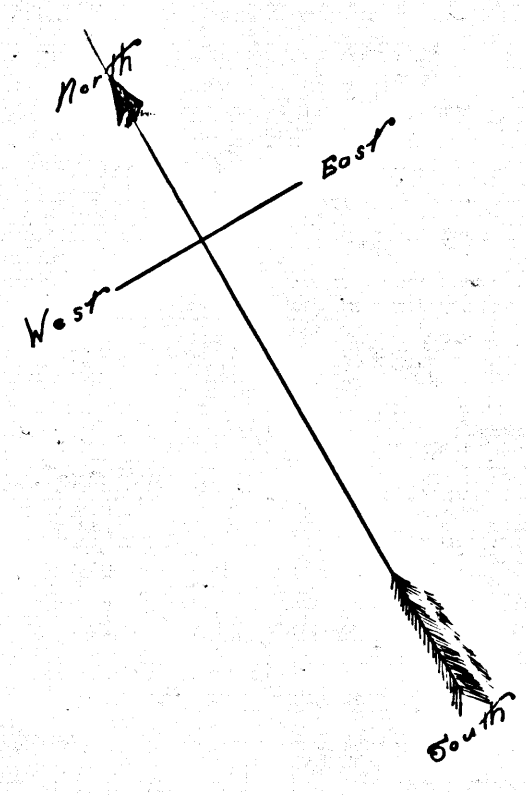


MAP
OF THE
ASSESSMENT DISTRICT
FOR THE WIDENING OF
THIRTIETH STREET
BETWEEN
MAPLE AVE AND SAN PEDRO

SCALE - 60 FT. TO 1 INCH
C.S. COMPTON CITY ENGR.

Exhibit A.



R.F. 105
A1 OF A2

MAP
OF THE
ASSESSMENT DISTRICT
FOR THE WIDENING OF
THIRTIETH STREET
BETWEEN
MAPLE AVE AND SAN PEDRO ST.

SCALE - 60 FT. TO 1 INCH
C. S. COMPTON CITY ENGR. JANY, 1895.

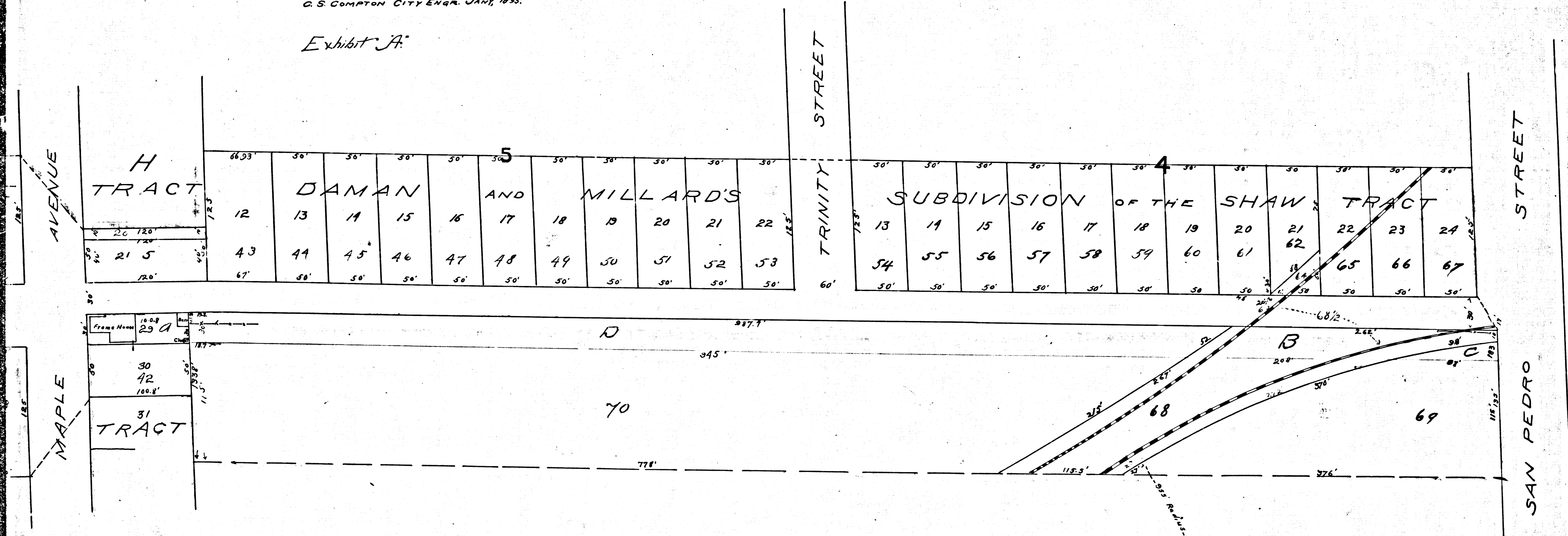
Exhibit A.

Filed March 20, 1895.

C.A. Luckenbach, City Clerk.
By C.L. Wilde, Deputy.

Filed at the request of Chas. A. Luckenbach.
May 2, 1895, at 2 mins past 2. PM.

E.C. Hodgeman, County Recorder.



R.F. 105
A 2 OF A 2