

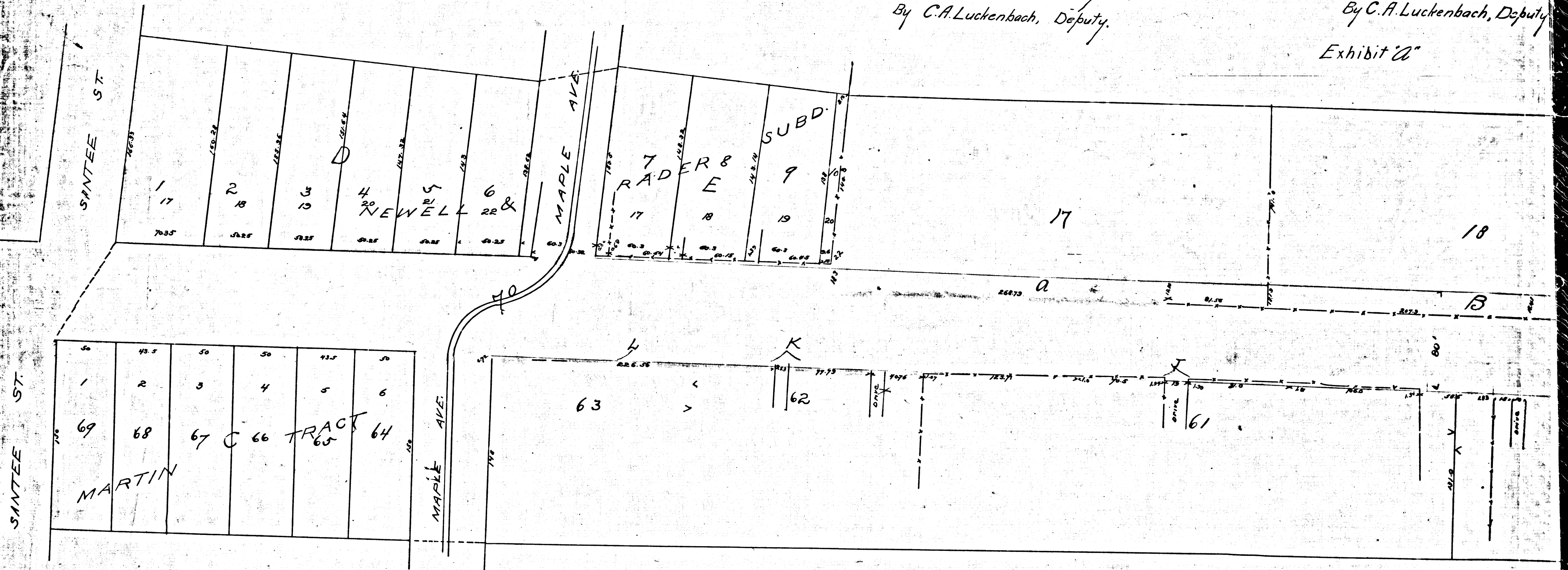
Confirmed and adopted by Council of the City of Los Angeles  
Sept. 19, 1892.

Filed August 10<sup>th</sup> 1892

Freeman G. Teed, City Clerk.  
By C.A. Luckenbach, Deputy.

Freeman G. Teed, City Clerk.  
By C.A. Luckenbach, Deputy.

Exhibit 'A'



R.F. 108  
A1 OF A3

MAP  
 OF THE ASSESSMENT DISTRICT  
 FOR THE WIDENING OF  
**WASHINGTON STREET**

BETWEEN  
 MAPLE AVE AND SAN PEDRO ST

SCALE - 50 FT. TO 1 IN.

JUNE 1892 J.H. DOCKWEILER CITY ENG.

Washington St. changed to Washington Blvd - Ord. 68401.

Filed at the request of Freeman G.  
 Oct. 1, 1912

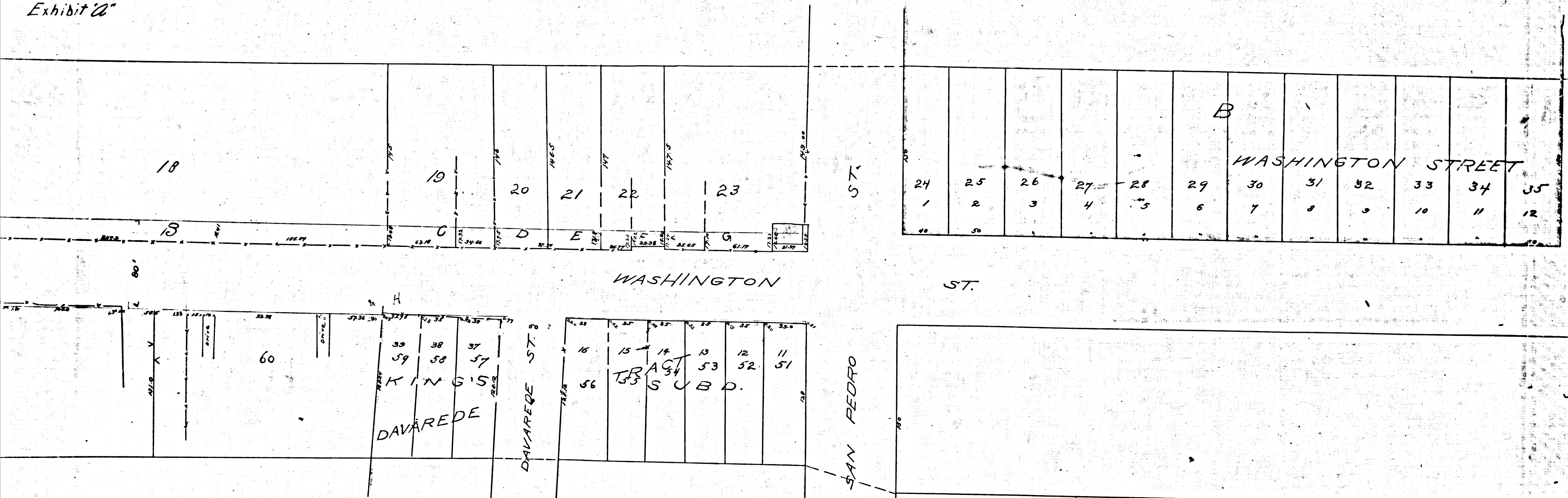
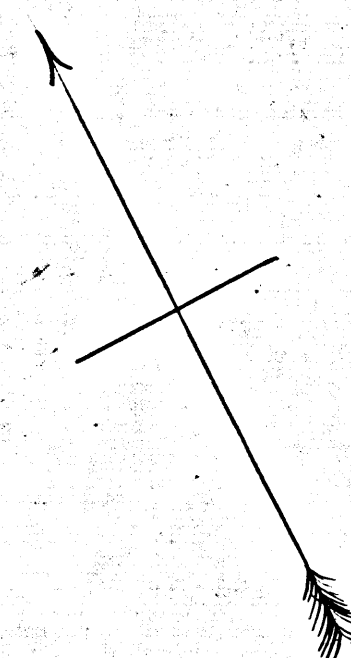
J. A. Kelley, County Rec.

Filed August 10<sup>th</sup> 1892

Freeman G. Teed, City Clerk.

By C. A. Luckenbach, Deputy.

Exhibit "A"

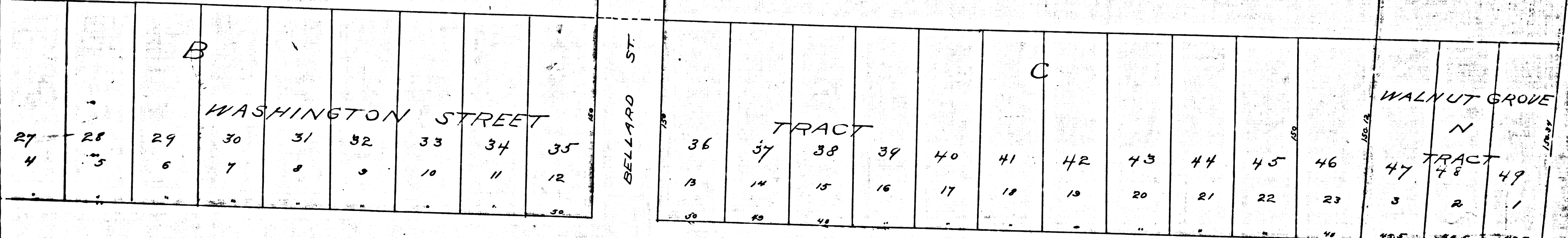


R.F. 108  
 A 2 OF A 3

Filed at the request of Freeman G. Teed

Oct. 1, 1922

J. A. Kelley, County Recorder.



150.00

50

R.F. 108

A3 OF A3