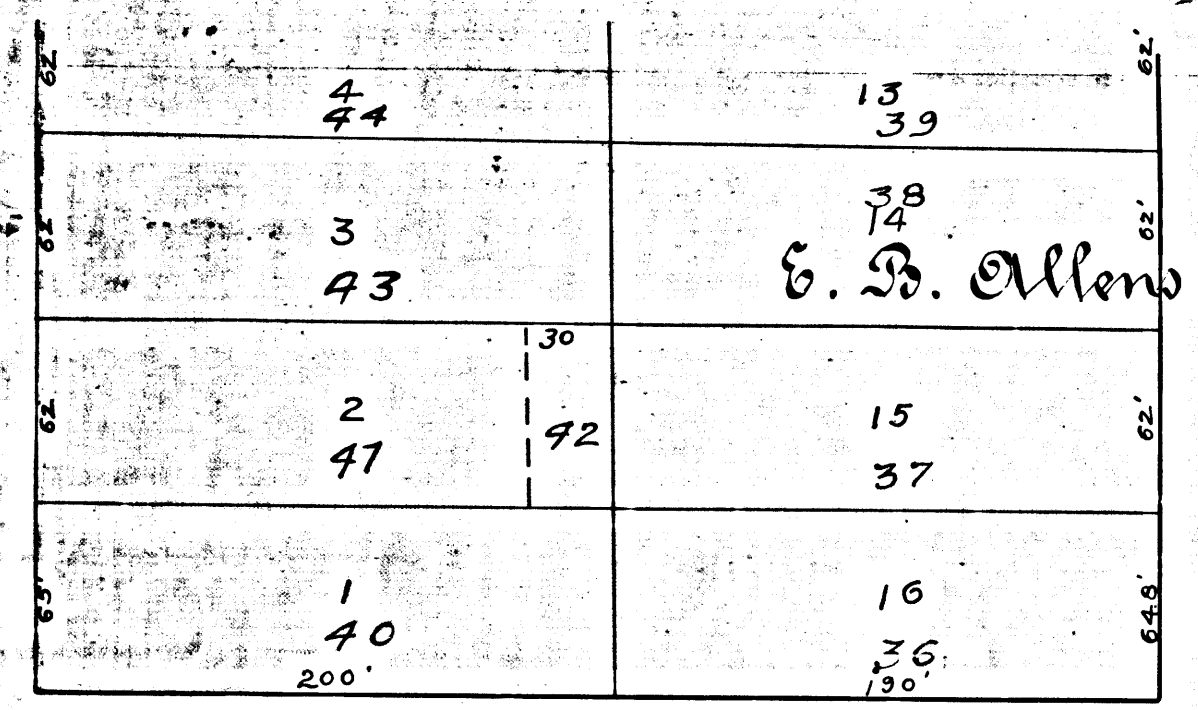
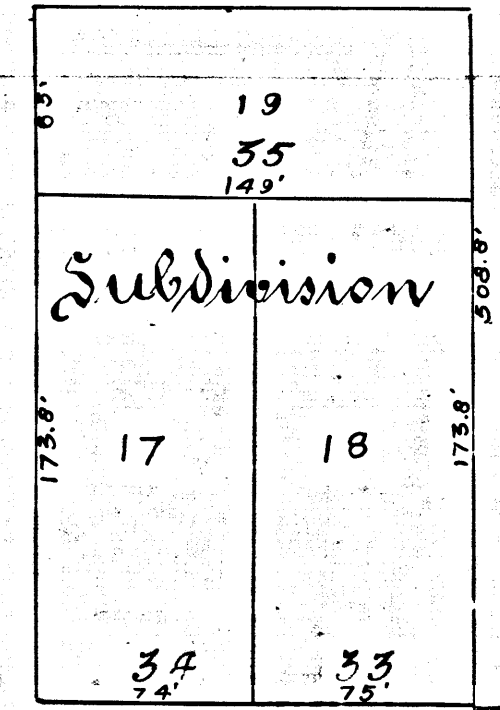


Avonmo Avenue



E. D. Allen

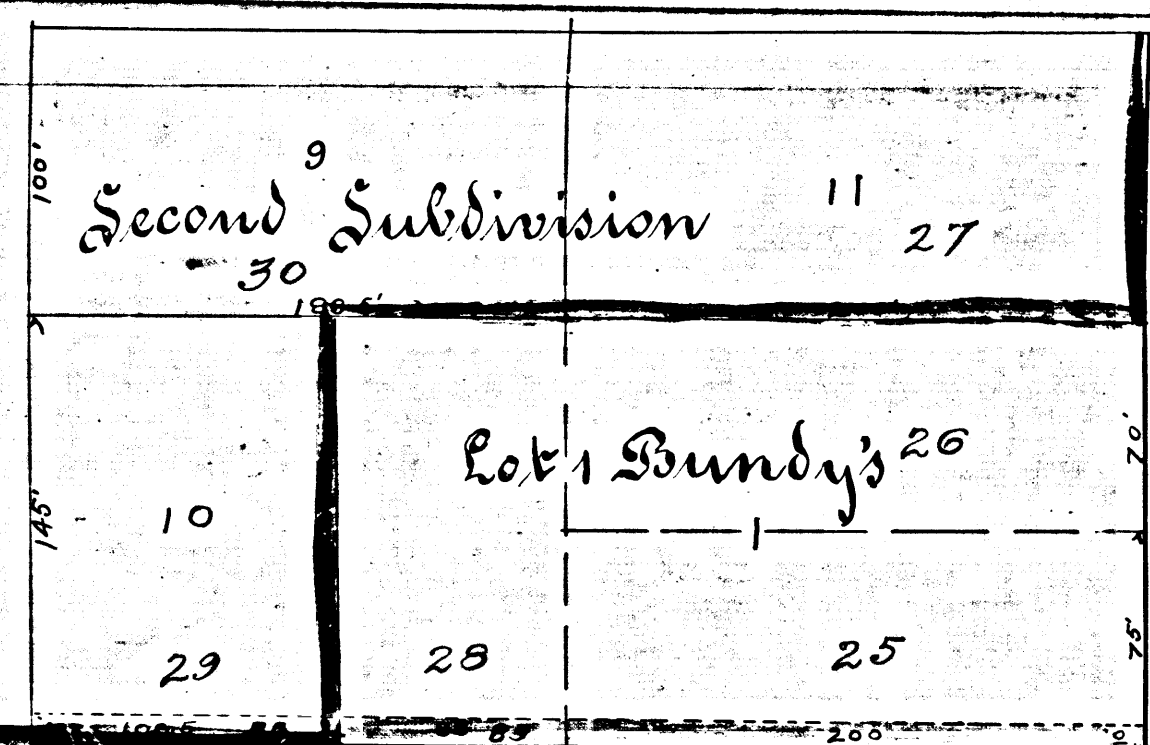
Avonmo Avenue



Subdivision

Bundy's

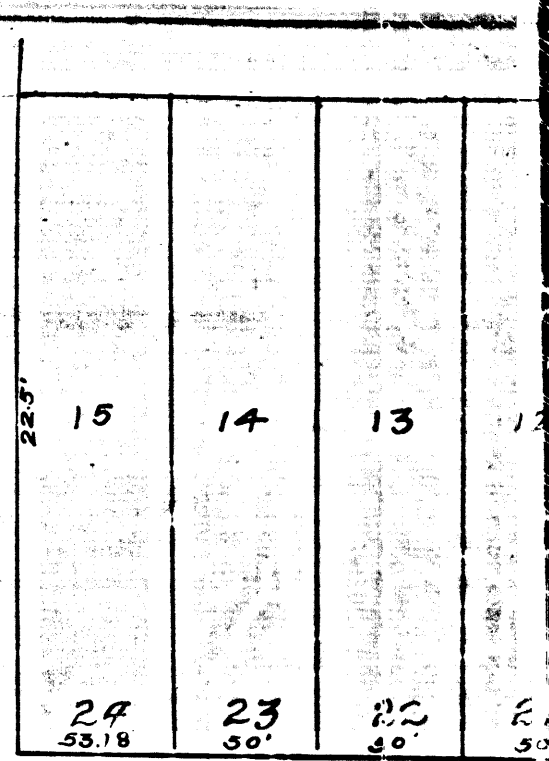
Madison Avenue



Second Subdivision

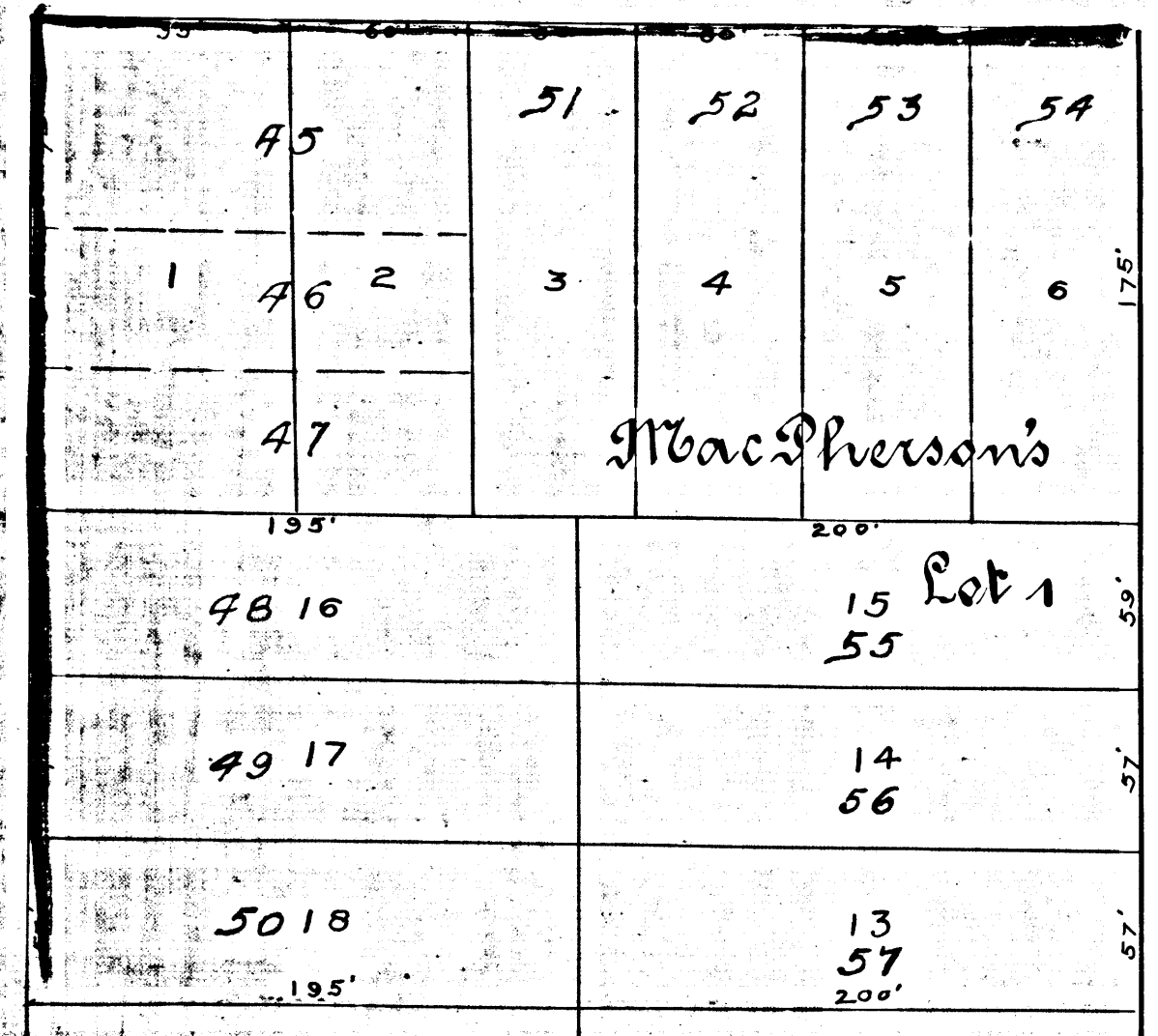
Lot 1 Bundy's

Avonmo Avenue



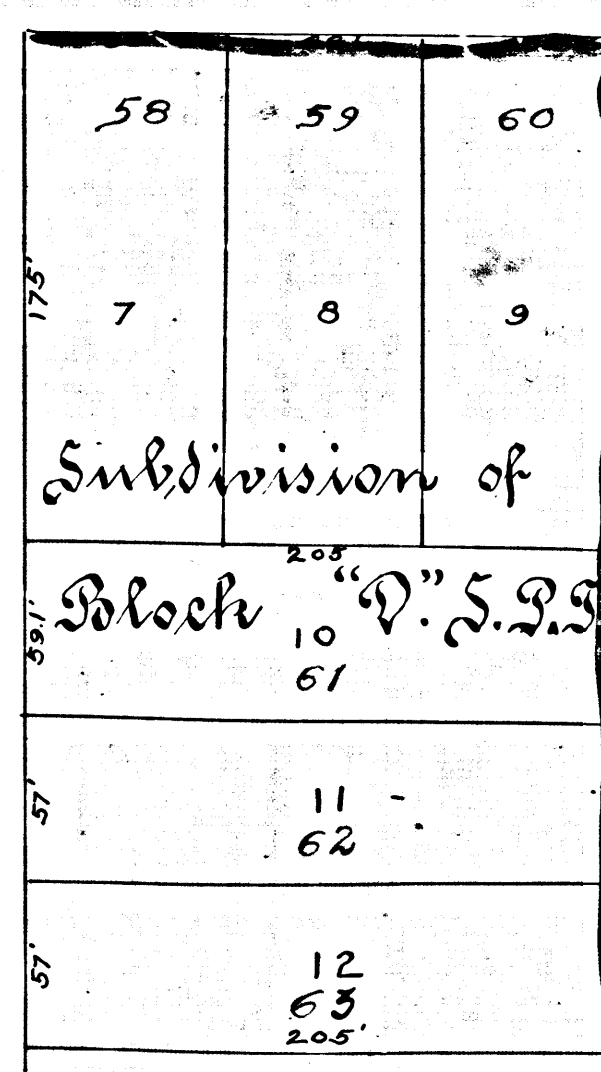
Willow Street

Leo Stokes



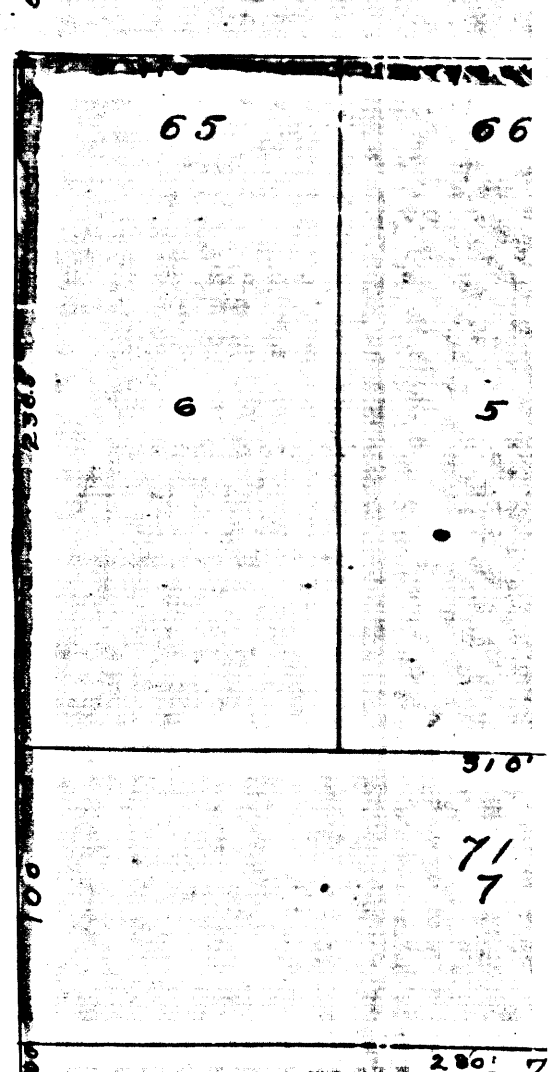
MacPherson's

Salmon Avenue

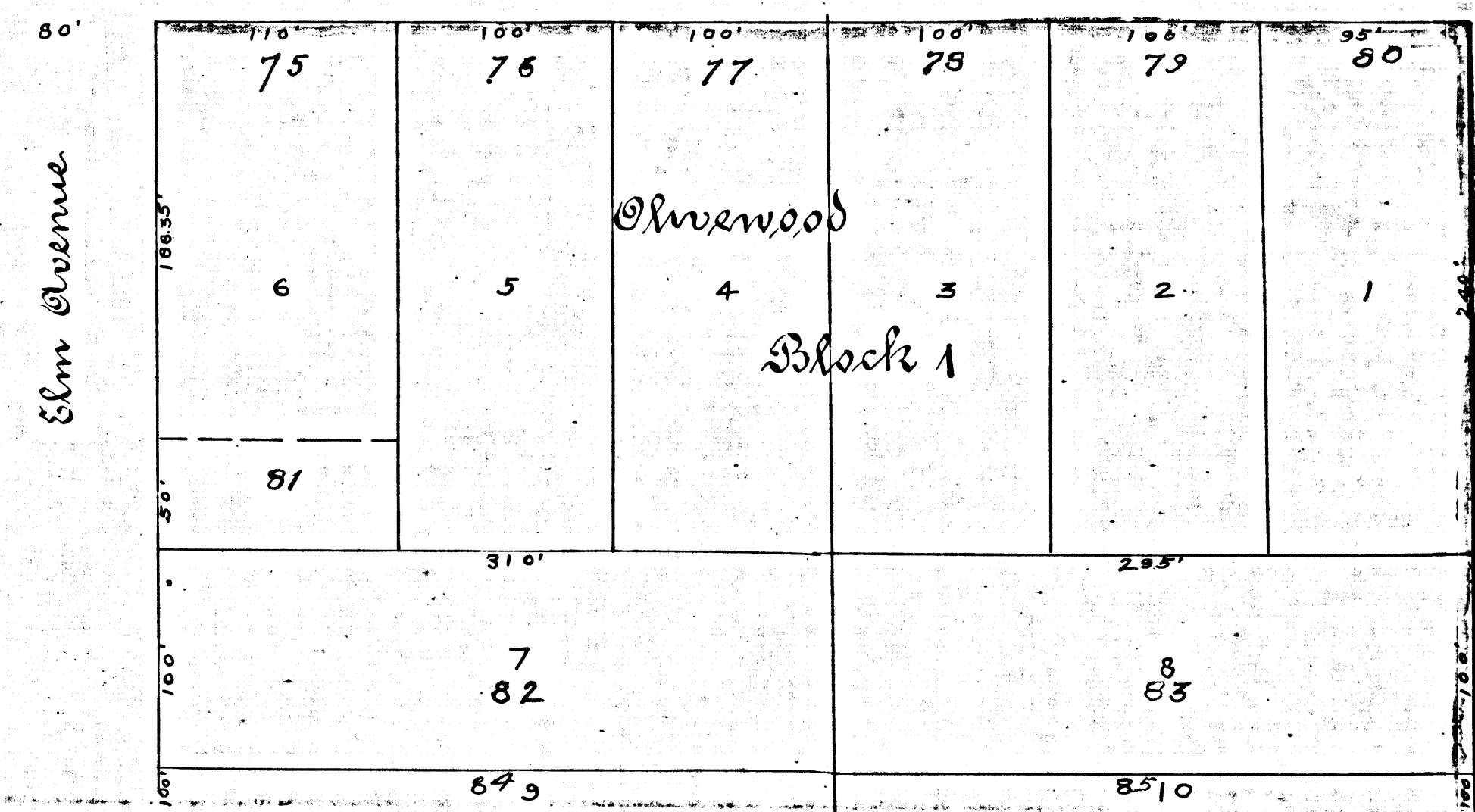
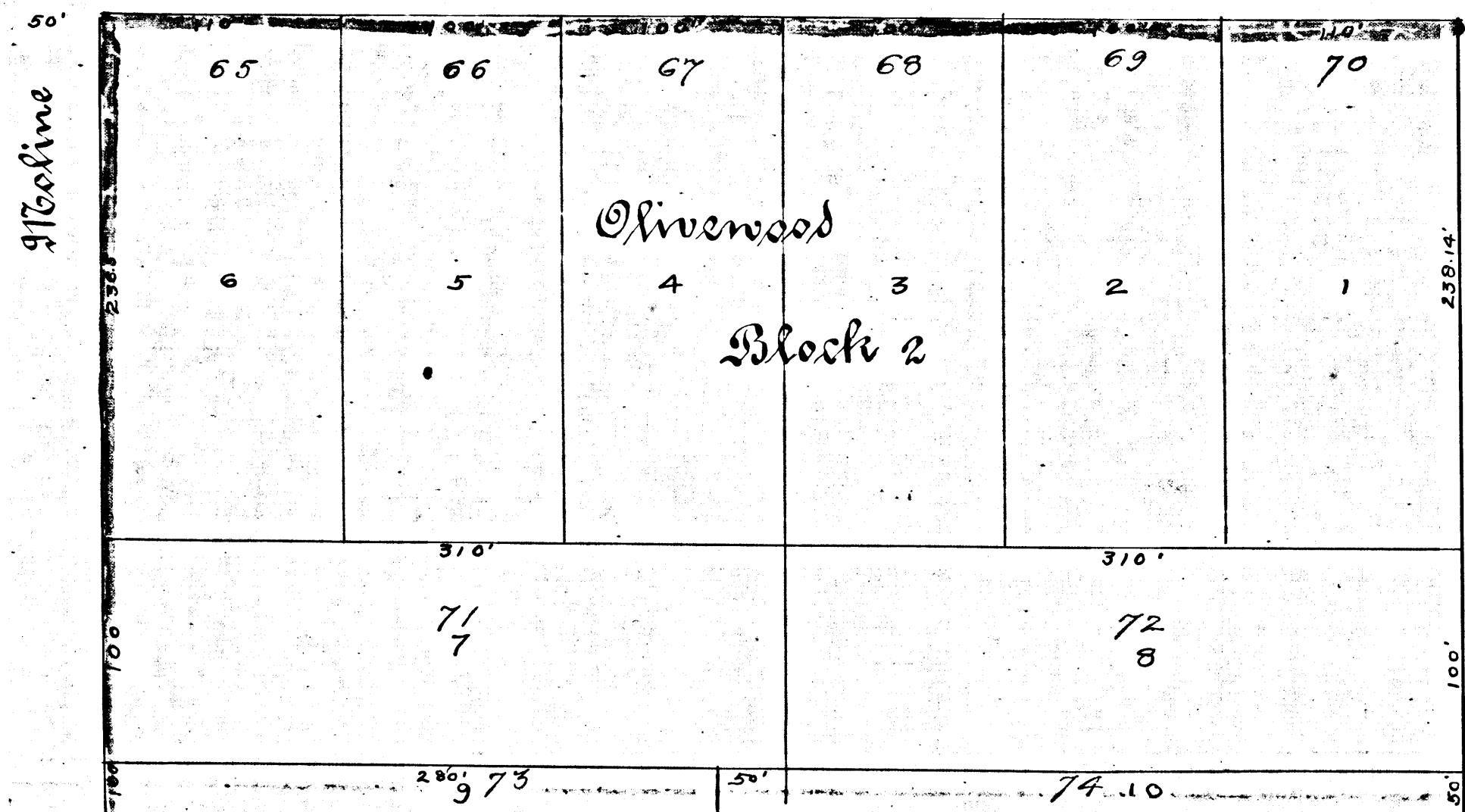
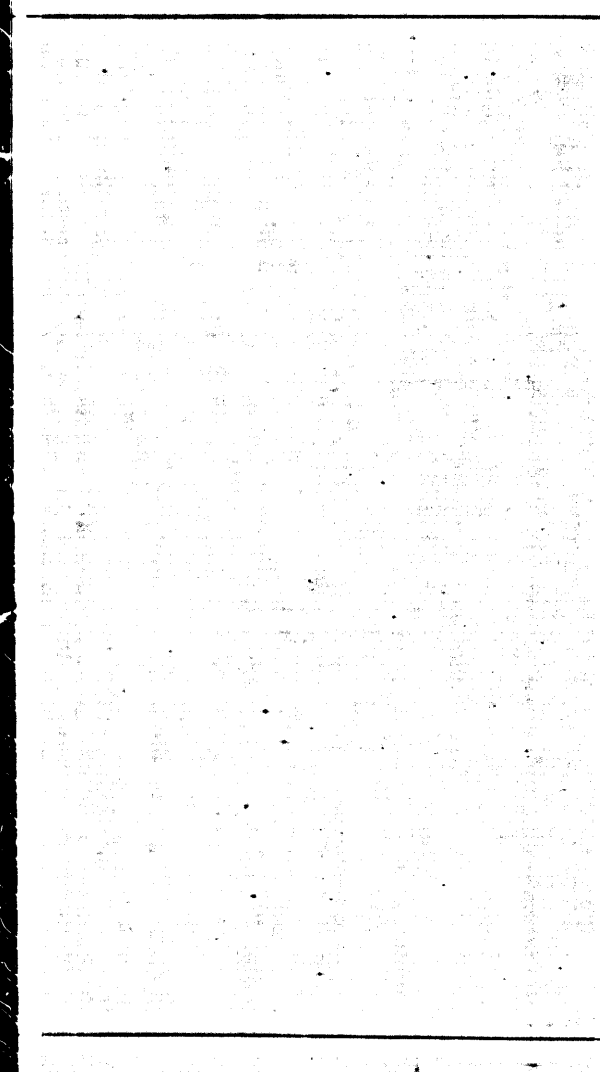
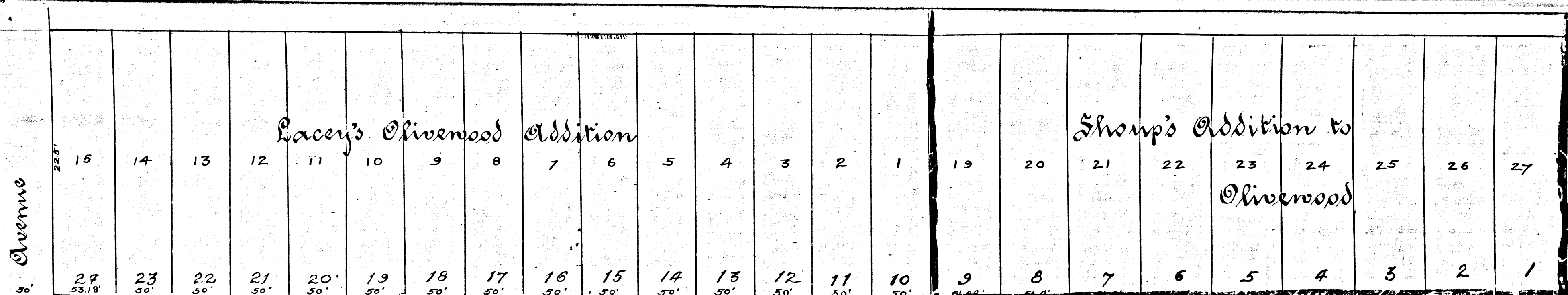
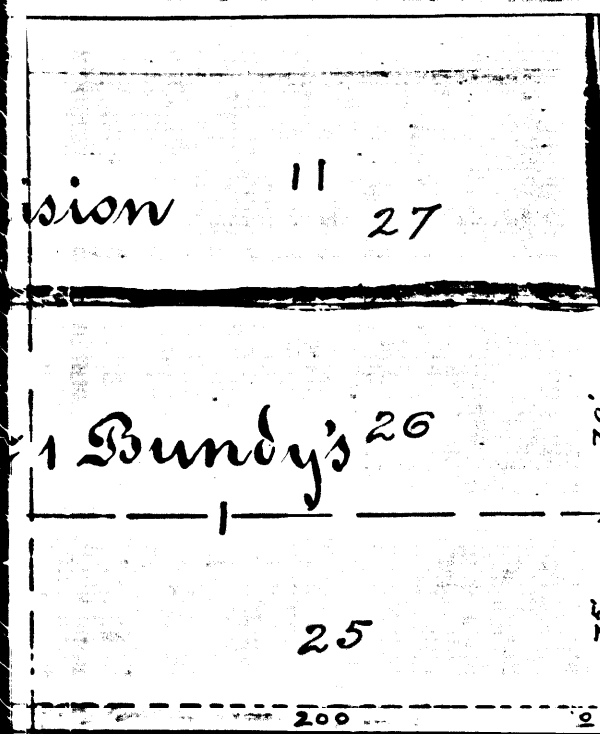


Subdivision of Block "D" S.P.S.

Madison Avenue

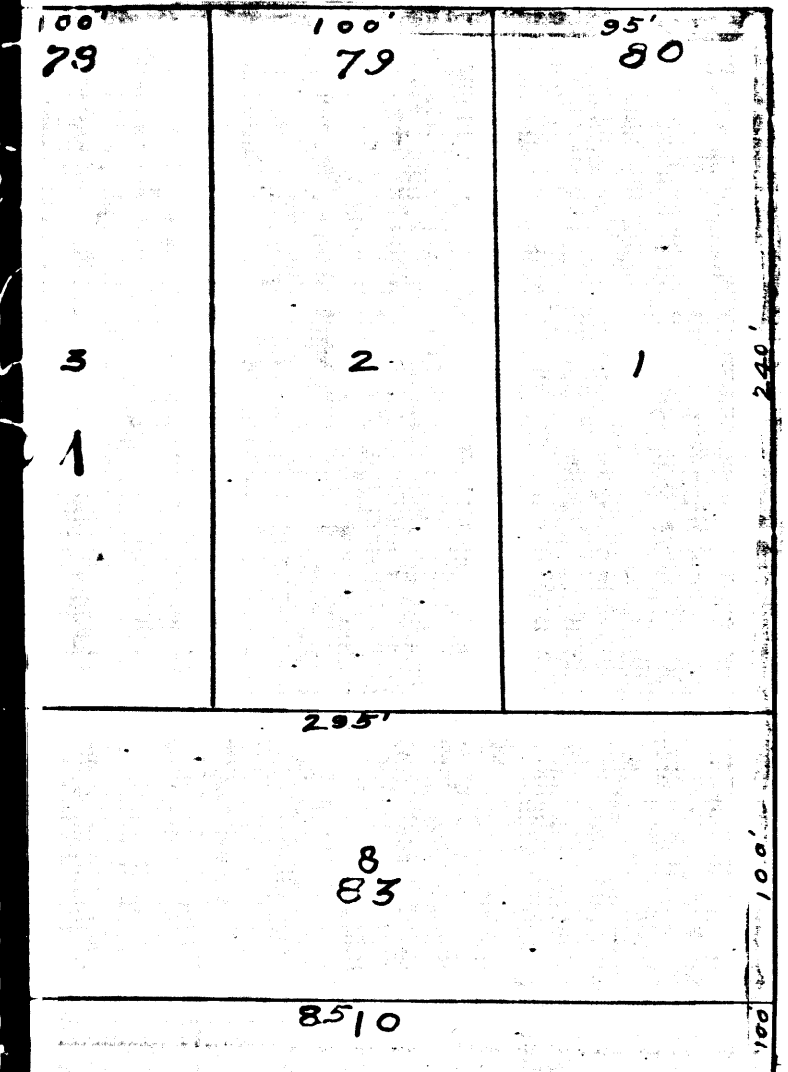
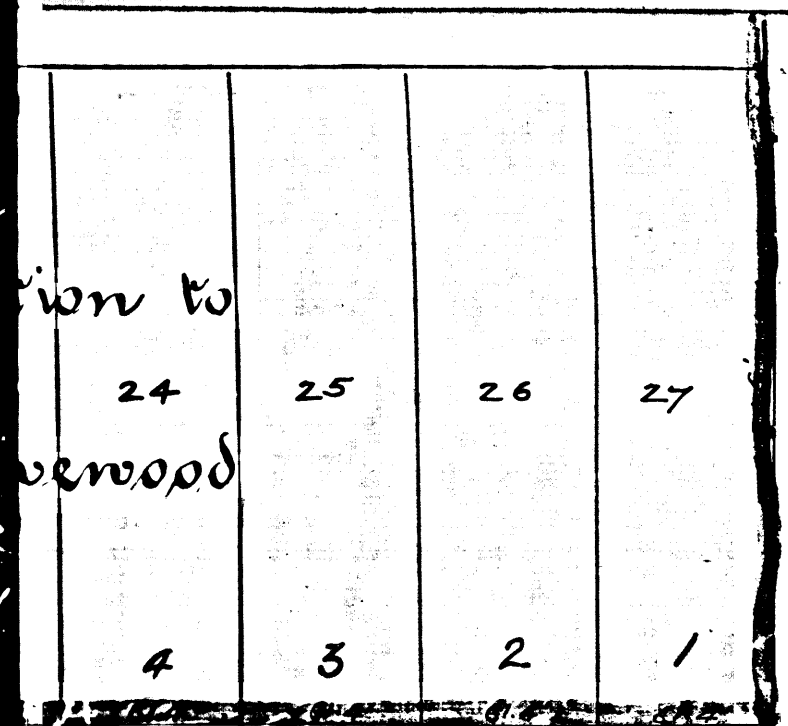


R.F. 109
A1 OF A3



R.F. 109
A 2 OF A 3

Filed Oct 17, 1895



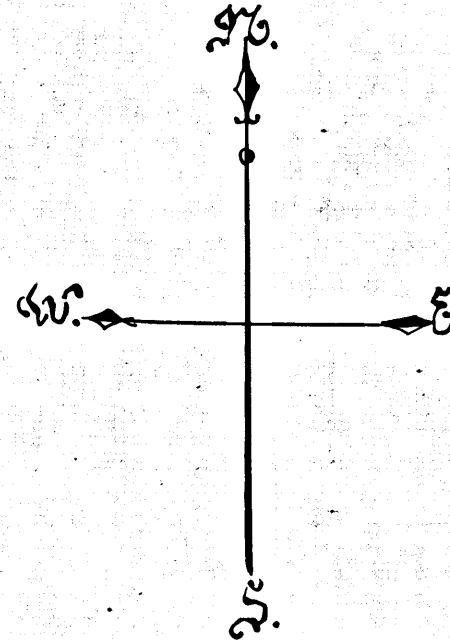
Diagram

Exhibiting Villa Street and its intersecting streets from Los Nobles Avenue to Lake Avenue in the City of Pasadena and showing the assessment district and the land to be taken for the widening of said Villa Street from the West line of Hobline Avenue to a point 273 feet West of the West line of Madison Avenue, also showing the lands assessed and the relative location of each district, block, lot or portion of lot and its dimensions. Each block, lot or portion of lot taken or assessed is designated and described by the numbers marked thereon in red ink, herein the mark 1 means feet. Figures in black ink next to property lines show each the length of said line in feet. Other black figures show the numbers of the lots. Gray shading shows portion of land to be taken for the widening of said street. Red section lining shows area covered by assessment district. Continuous black lines mean original property lines. Broken black lines mean subdivision of original lots. Dotted lines mean block subdivisions. Colored shading means boundaries of subdivisions named. The diagram is drawn to a scale of 60 feet to one inch.

Pasadena, Cal.
June, 1895

Index #8

W. B. Chapp
City Engineer



R.F. 109
A3 OF A3