

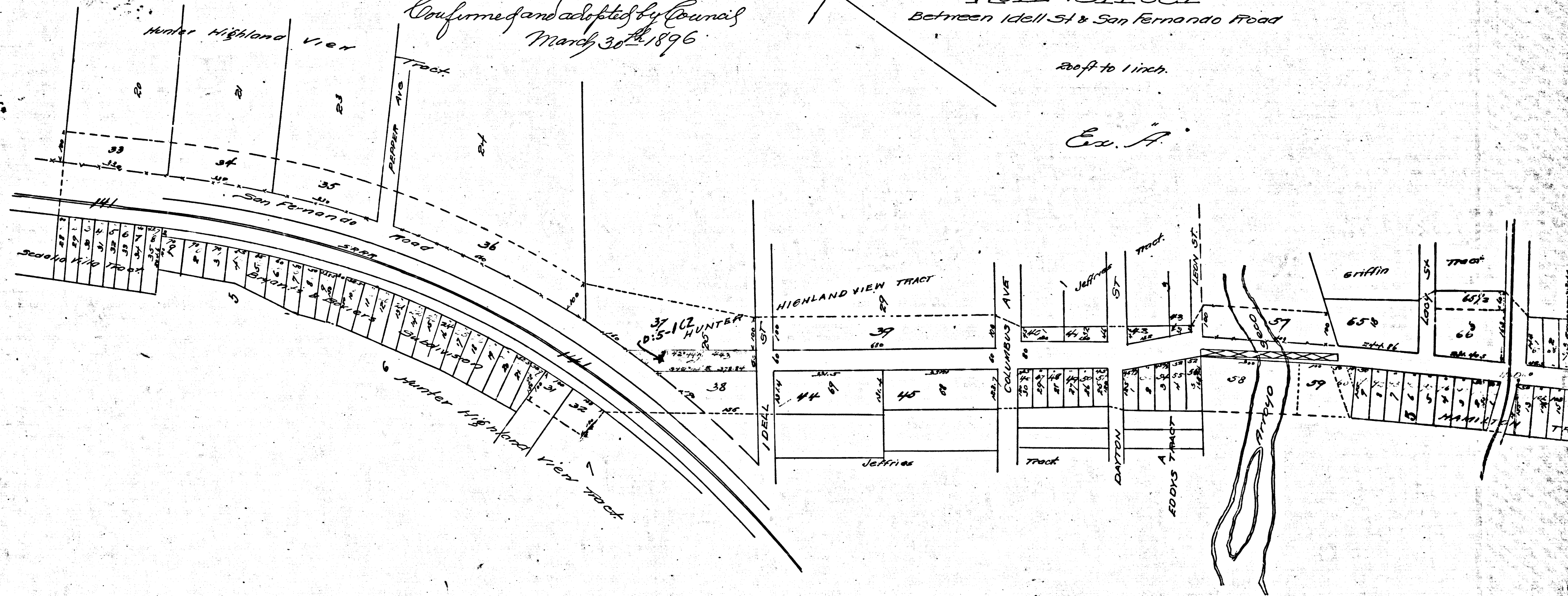
Filed Apr. 6, 1896.

Confirmed and adopted by Council
March 30th 1896

ASSESSMENT MAP
for Opening & Extending
Well Street
Between Idell St & San Fernando Road

Scale to 1 inch.

Ex. A.

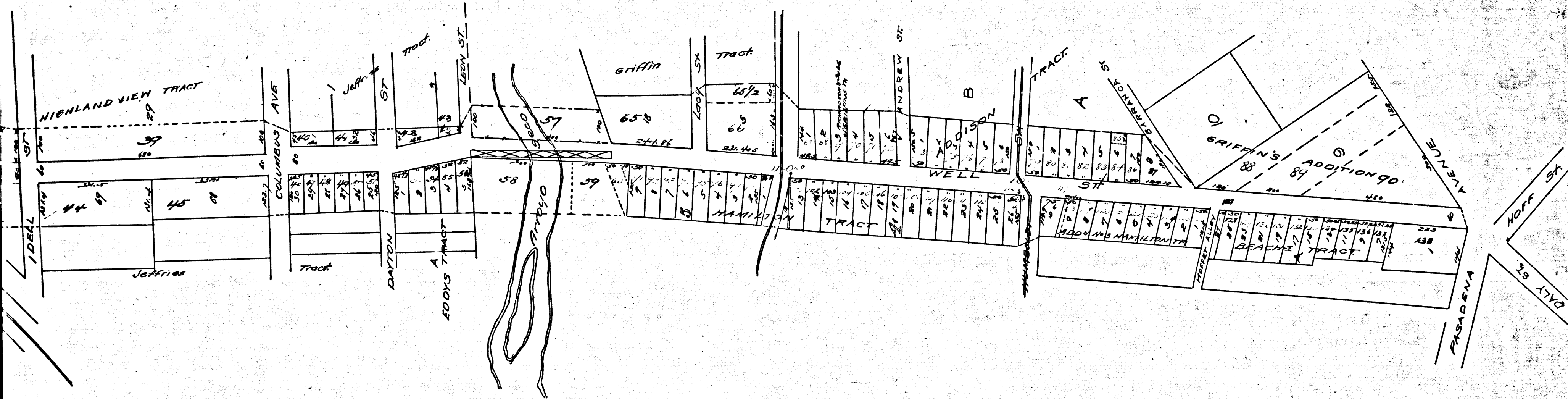


R.F. 112
A 1 OF A 2

ASSESSMENT MAP
 for Opening & Extending
 Well Street
 Between Idell St & San Fernando Road

200ft to 1 inch.

Exc. A.



R.F.	112	
A2	OF	A2