

$\Delta = 35^\circ 30'$
 $T = 180.39$
 $D =$
 $R = 568.64$
 $L = 349.65$

$\Delta = 35^\circ 30'$
 $T = 209.20$
 $D =$
 $R = 653.64$
 $L = 404.93$

$\Delta = 36^\circ 45'$
 $T = 108.02'$
 $D =$
 $R = 345.65$
 $L = 209.73$

$\Delta = 35^\circ 48'$
 $T = 79.87'$
 $D =$
 $R = 256.26$
 $L = 169.27$

$\Delta = 18^\circ 00'$
 $T = 359.95$
 $R = 4100$
 $L = 91.65$

$\Delta = 41^\circ 14'$
 $T = 101.78'$
 $D =$
 $R = 270.54$
 $L = 194.70' \text{ or.}$

$\Delta = 41^\circ 14'$
 $T = 144.43'$
 $D =$
 $R = 383.90$
 $L = 276.30' \text{ or.}$

Por. Orange Gr. Ave Vac. D:51-213, Ord H2683.

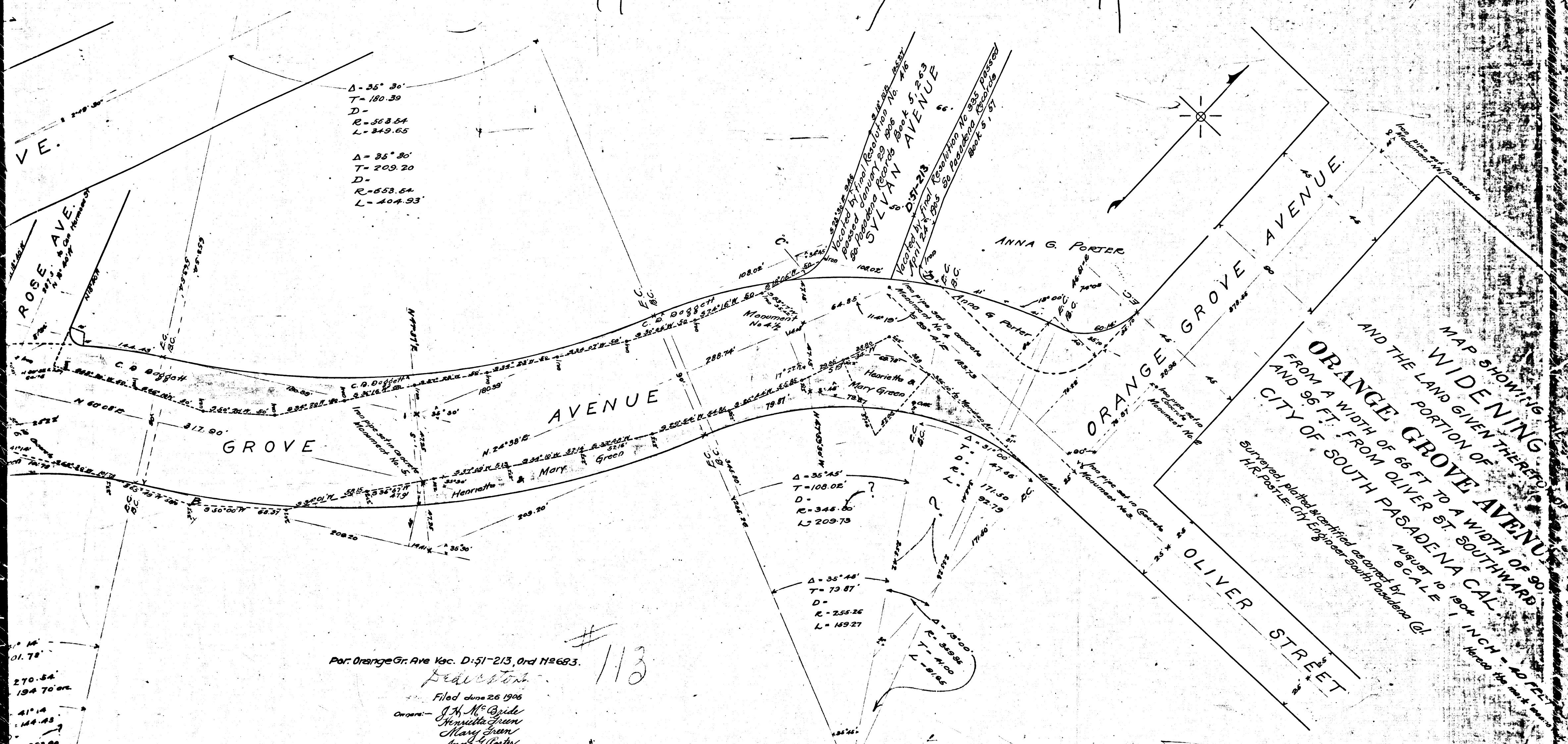
Deedators:
 Filed June 26 1905
 Owners: J.H. Mc Bride
 Henrietta Green
 Mary Green
 Anna G Porter
 C.D. Duggott

113

Index #8

| | | |
|------|-----|----|
| R.F. | 113 | |
| A1 | OF | A2 |

160



$\Delta = 35^\circ 30'$
 $T = 180.39$
 $D =$
 $R = 568.64$
 $L = 349.65$

$\Delta = 35^\circ 30'$
 $T = 209.20$
 $D =$
 $R = 658.64$
 $L = 404.93$

$10^\circ 14'$
 $01.78'$
 $270.54'$
 $194.70'$
 $41^\circ 14'$
 $144.43'$
 $R = 583.90$
 $L = 276.30'$

Par. Orange Gr. Ave Vac. D:51-213, Ord 112683.
 Dedication
 Filed June 26 1906
 Opposed by:
 J. H. Mc Bride
 Henrietta Green
 Mary Green
 Anna G. Porter
 C. D. Duggitt

113

G.E.M.

$\Delta = 35^\circ 45'$
 $T = 108.02$
 $D =$
 $R = 348.60$
 $L = 209.73$

$\Delta = 35^\circ 48'$
 $T = 73.87$
 $D =$
 $R = 255.26$
 $L = 169.27$

$\Delta = 35^\circ 00'$
 $T = 47.46$
 $D =$
 $R = 348.60$
 $L = 209.73$

MAP SHOWING
 WIDENING
 PORTION OF
 ORANGE GROVE AVENUE
 FROM A WIDTH OF 66 FT TO A WIDTH OF 90
 AND 96 FT. FROM OLIVER ST. SOUTHWARD
 CITY OF SOUTH PASADENA CAL.
 Surveyed, plotted & certified as correct by
 H.R. Postle, City Engineer South Pasadena, Cal.

SCALE 1" = 100'
 HEREON THE UNIT IS FEET

Index #8

| | |
|------|-------|
| R.F. | 113 |
| A2 | OF A2 |