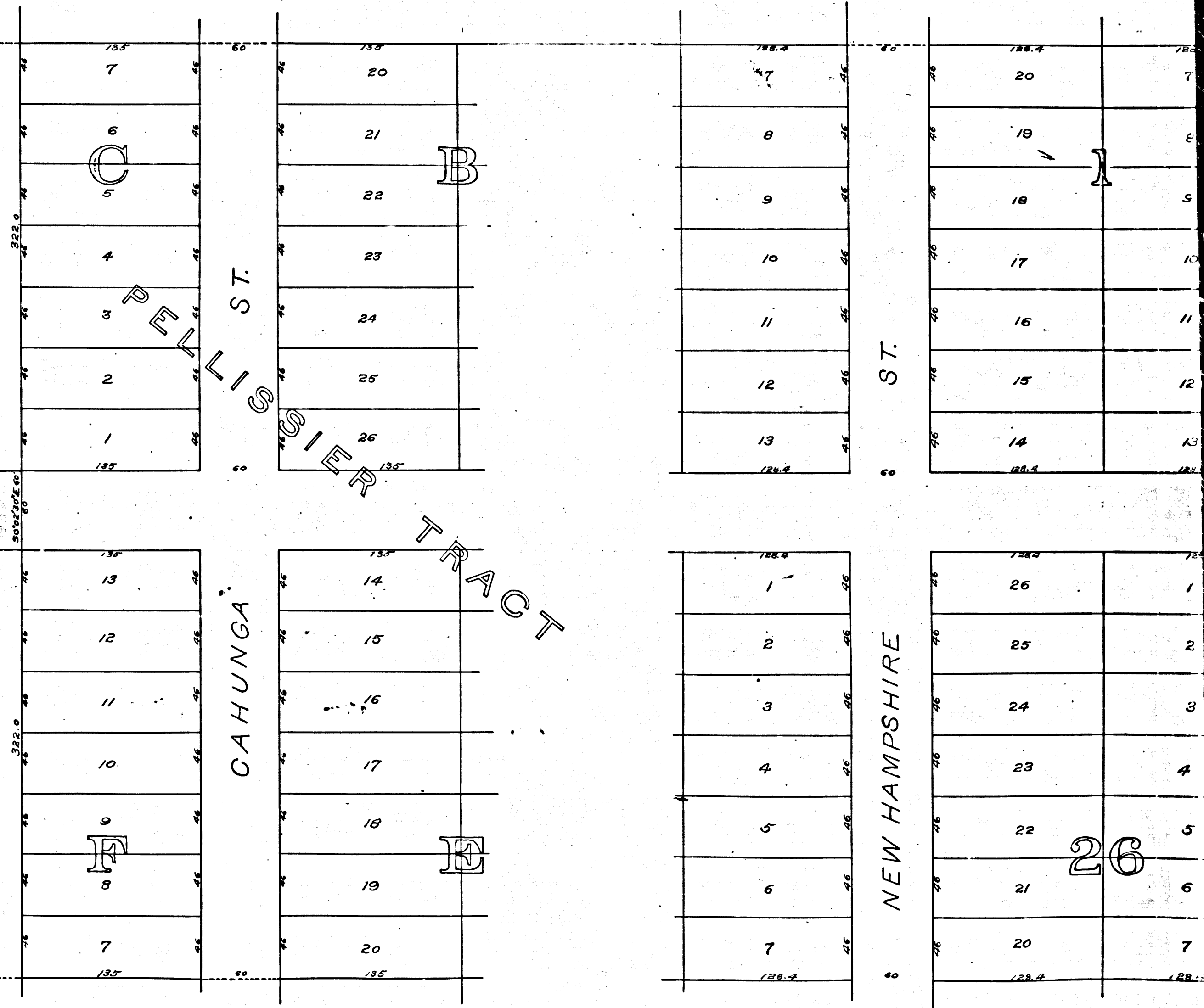


R.F. 114  
 A1 OF A3

The West Patent B

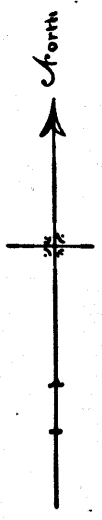
Part of the N<sup>1</sup>/<sub>2</sub> of S.W<sup>1</sup>/<sub>4</sub> of Section 25, T1S, R14W, S.B.M.

WESTERN AVE.



26

R.F. 114  
 A2 OF A3



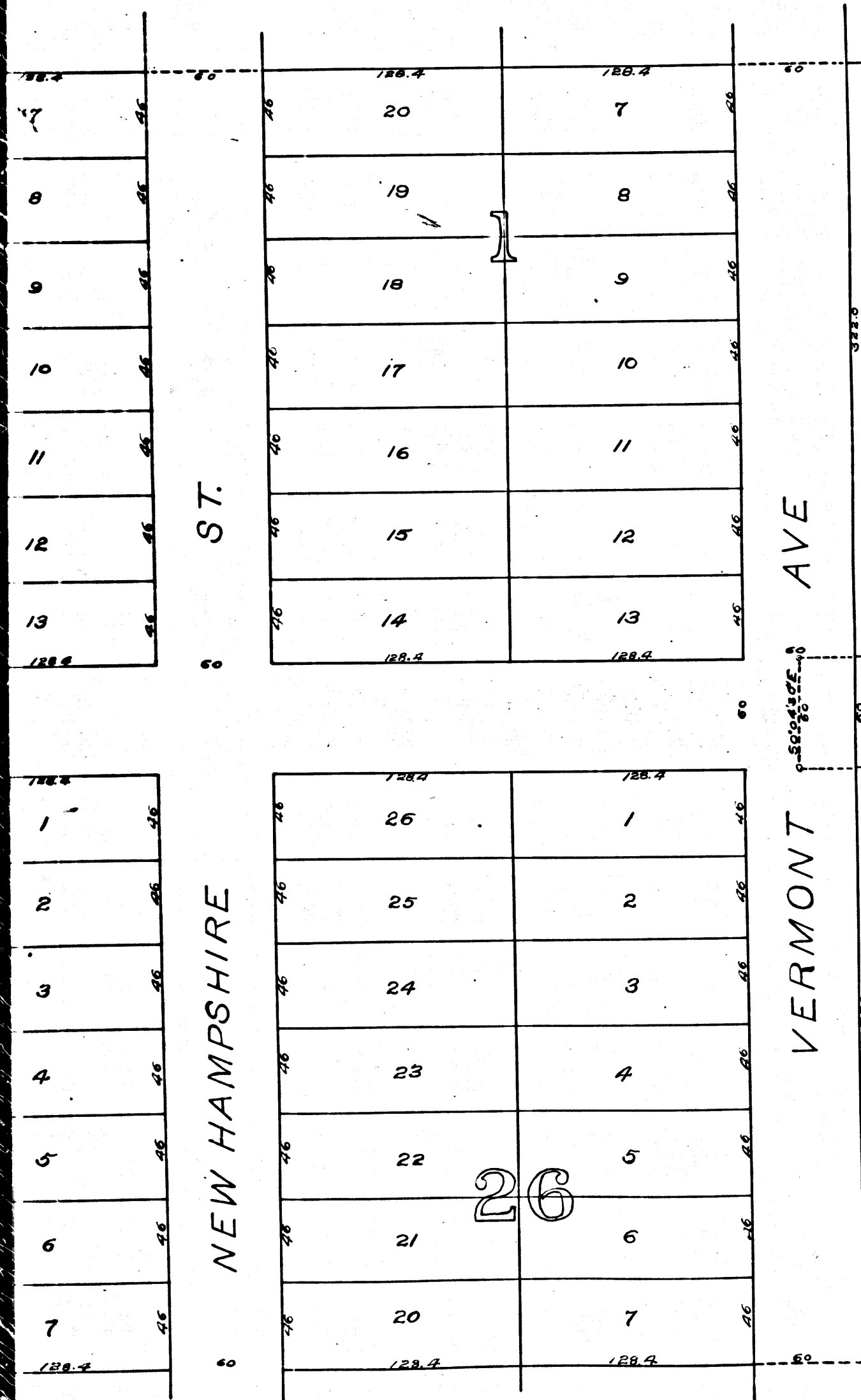
Map  
 Showing Land to be taken  
 For the opening and extending of  
**TENTH STREET**

FROM  
 The West Patent Boundary Line of the City of Los Angeles to Western Avenue

City of Los Angeles Cal.  
 J.H. Dockweiler City Engineer  
 July 1898

Scale 1 inch = 60 feet  
 Ordinances Nos 5008 and 5189 (New Series)

~~~~~ Note ~~~~~  
 Red tint shows land to be taken



*Part of the N 1/2 of S.W 1/4 of Section 30. T1S. R13W.*



R.F. 114  
A3 OF A3

Filed Nov. 19, 1898.  
at 7 min. past 10 A.M.

$\frac{1}{2}$  of S.W.  $\frac{1}{4}$  of Section 30. T1S. R13W.

2222.67

S89°42'30"W 2254.55  
2227.35

C.S. 7003

N89°42'30"E 2254.55  
2227.35

2226.83

SEE  
WEST PART BOUNDARY  
OF SECTION 30  
T1S. R13W. C.S. 7003  
BY THE GRANITE MONUMENT AS AT  
THE INTERSECTION OF THE WEST PART  
BOUNDARY LINE WITH THE CENTER LINE  
OF THE WEST PART BOUNDARY LINE.