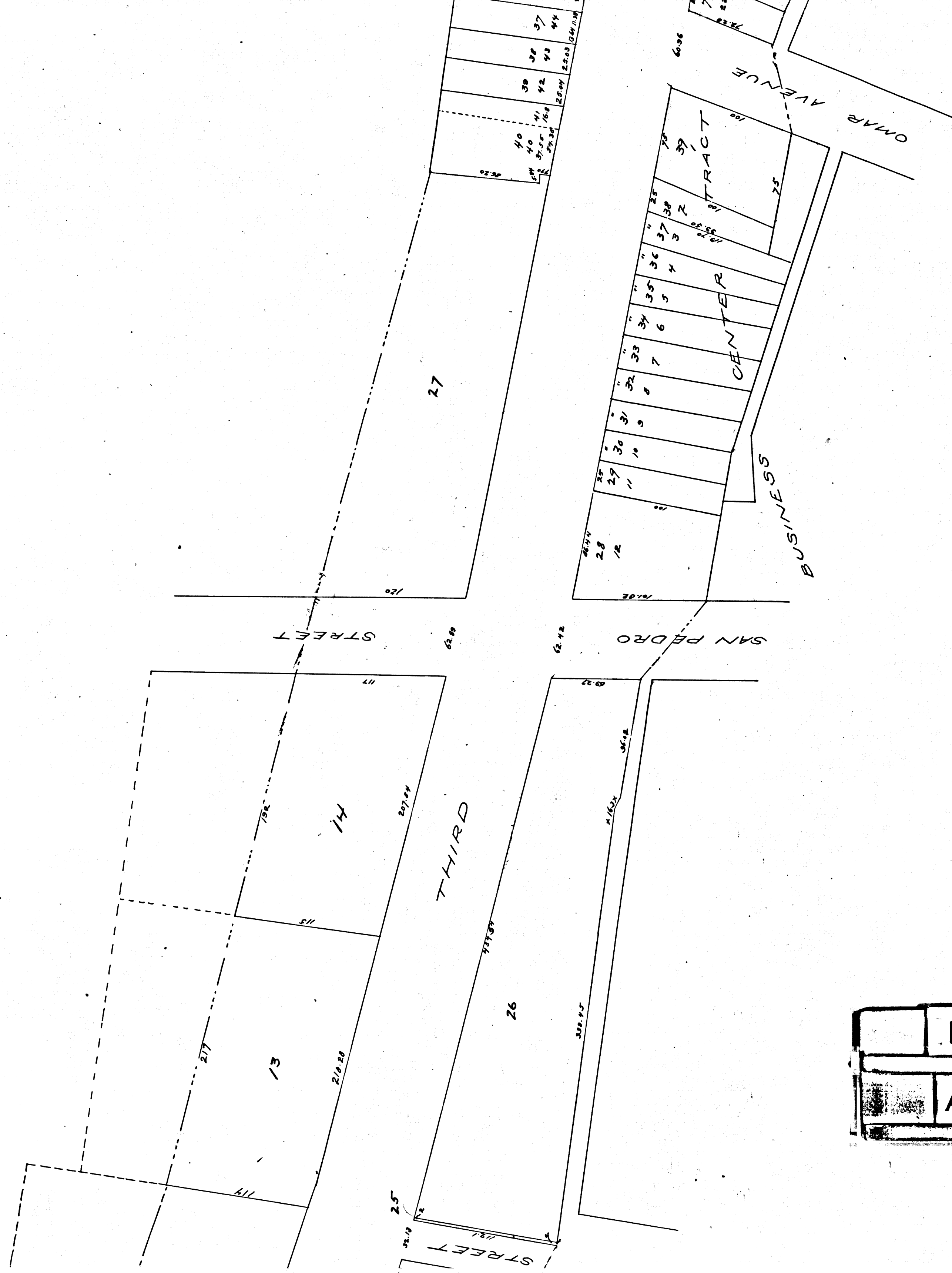


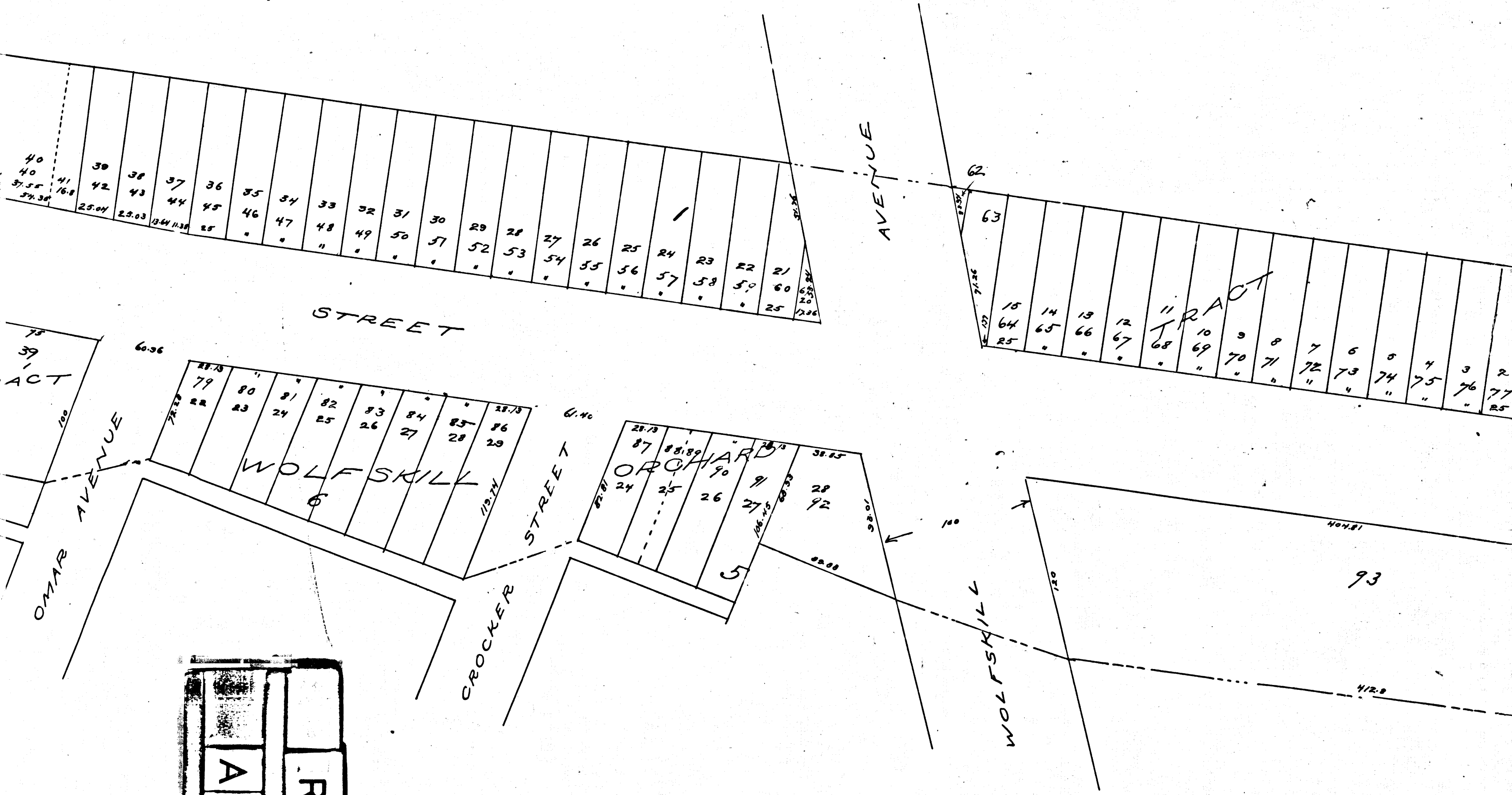
Filed at the request of
 C. A. Lichtenbach, June 21, 1914
 at 10 min past 5 P. M.
 Arthur Bray, Co. Recorder.

R.F. 115
 A1 OF A5



R.F.	115
A 2	OF A 5

MAP
 OF THE
ASSESSMENT DISTRICT
 FOR THE
WIDENING OF THIRD STREET
 BETWEEN
 ALAMEDA STREET AND THE WEST LINE BIGELOW TRACT
 IN THE
 CITY OF LOS ANGELES - CALIFORNIA
 FEB. 1894 J.H. DOCKWEILER - CITY ENGINEER
 SCALE - 50 FEET TO 1 INCH.

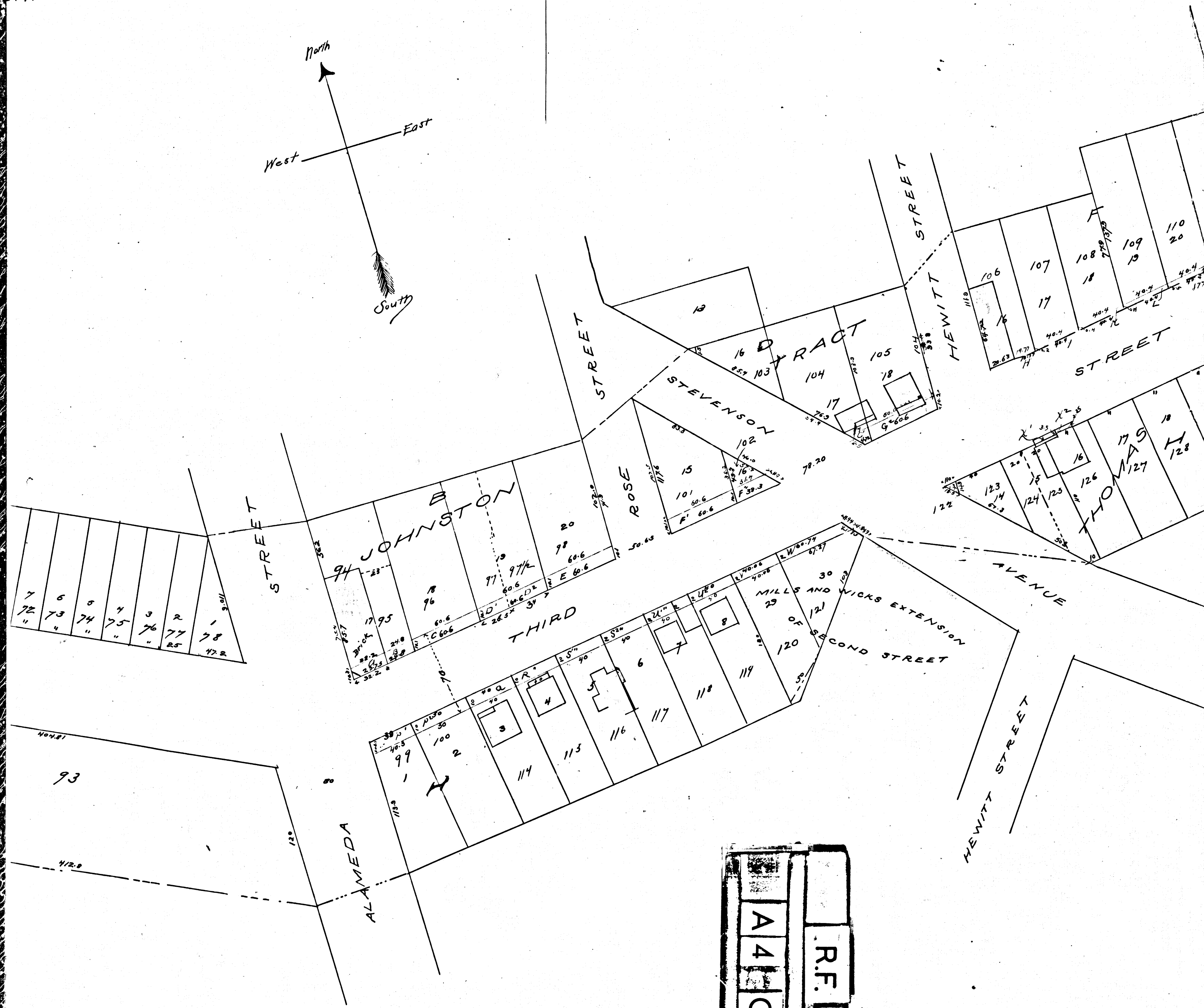
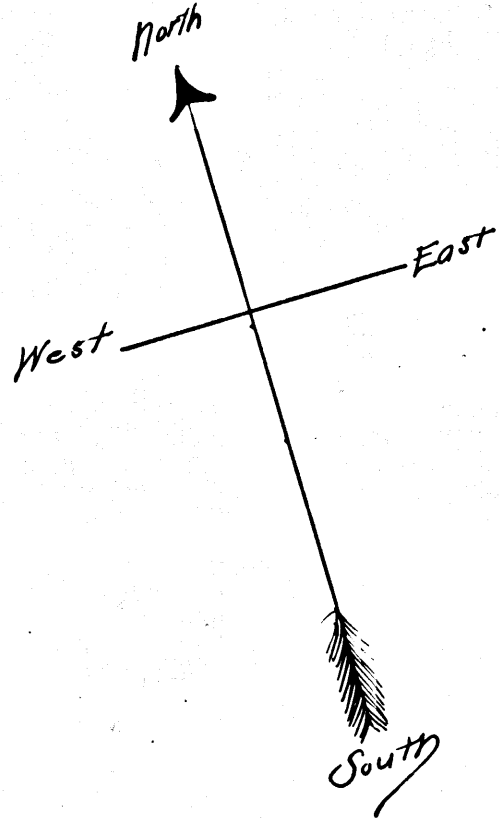


R.F. 1115
 A 3 OF A 5

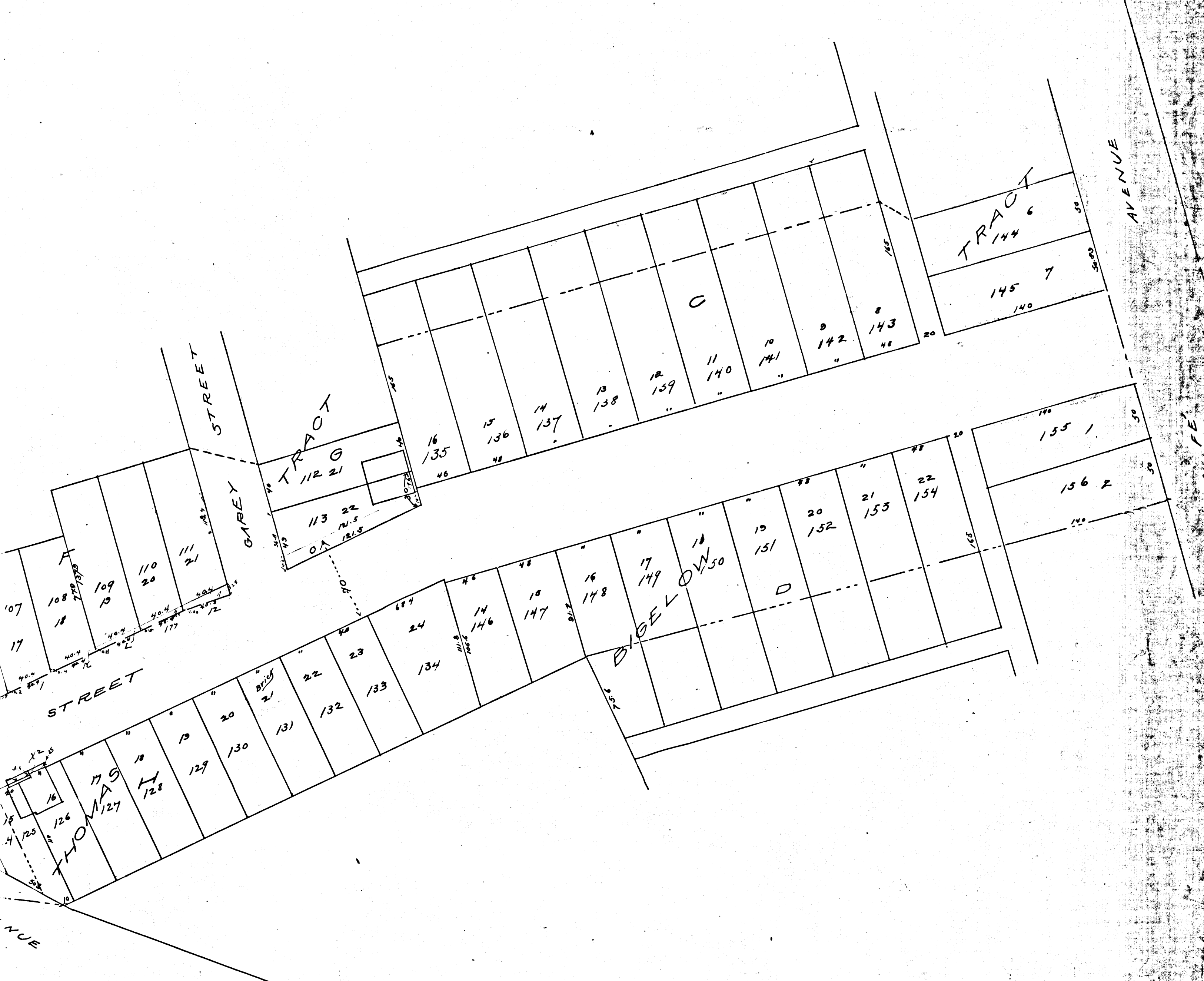
DICT
STREET

GELOW TRACT

CALIFORNIA
ENGINEER
H.



R.F. 1115
A 4 OF A 5



R.F. 1115
 AS OF AS