

91  
H.H. Metcalf

90  
J.W. Phelps

92  
City of L.A.

BOUNDARY  
CITY OF L.A.  
WEST

205.92

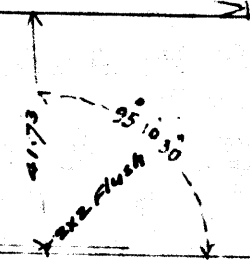
150.82

617.76

1390.5 Total

581.85

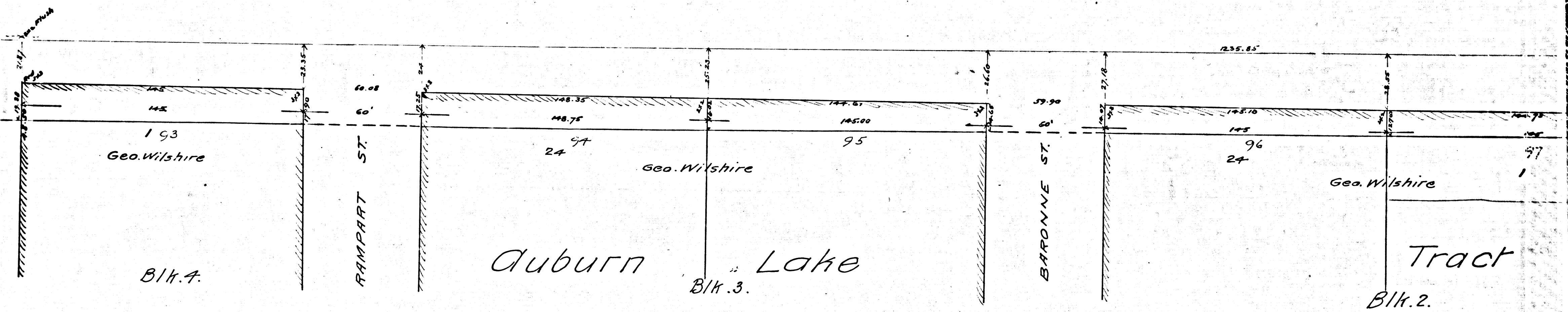
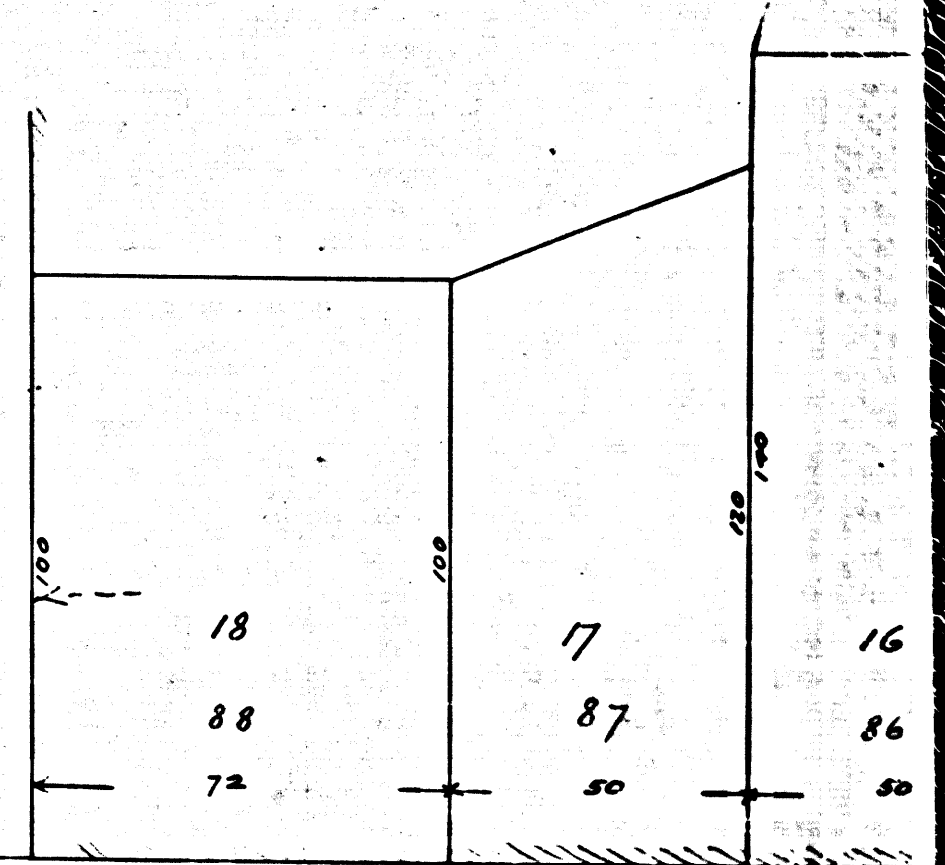
781.14



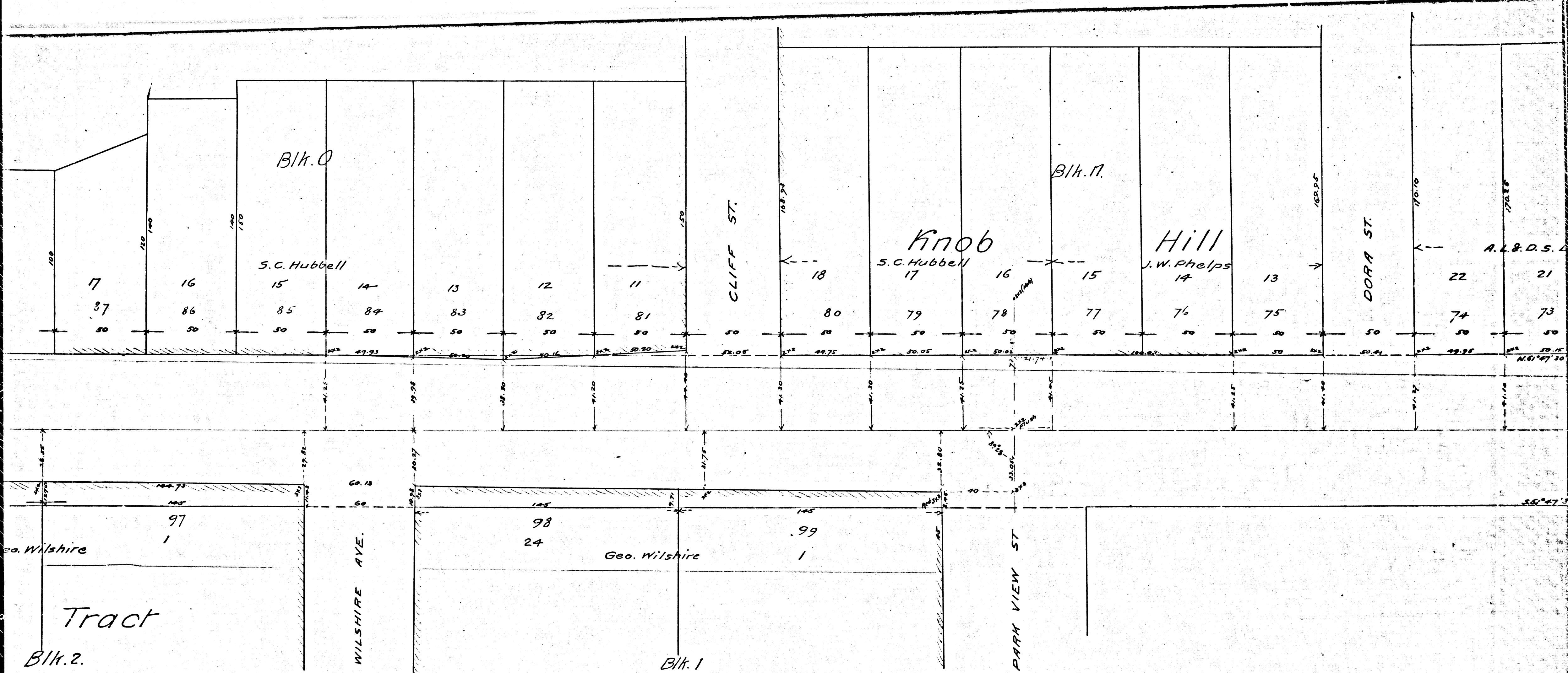
R.F. 116  
A 1 OF A 11

89  
S.C. Hubbell

627.47

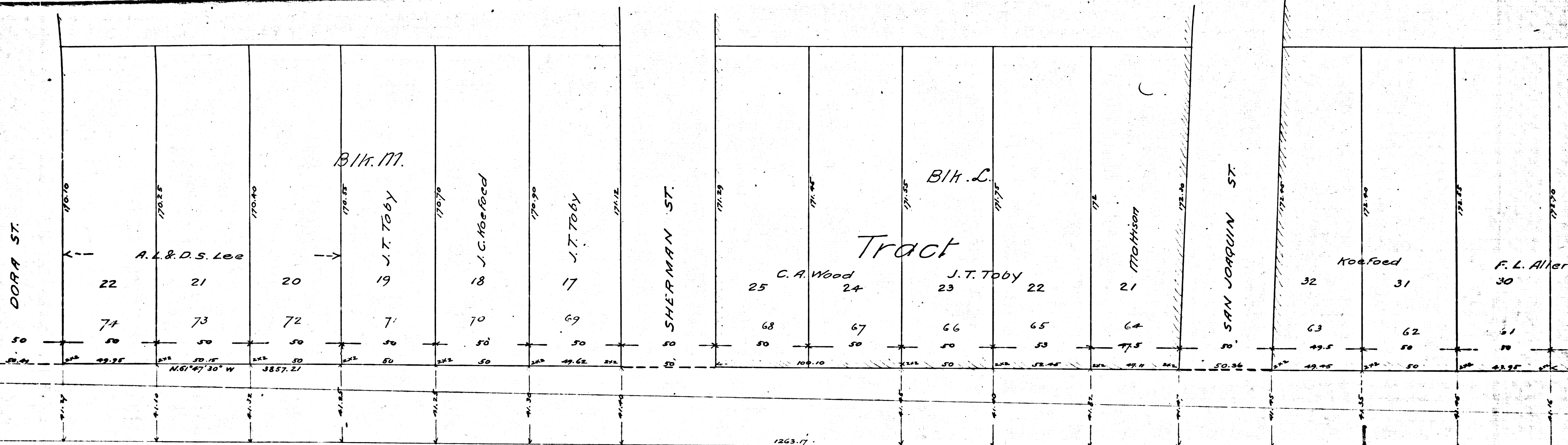


R.F. 116  
A2 OF A11



R.F. 116  
A3 OF A11



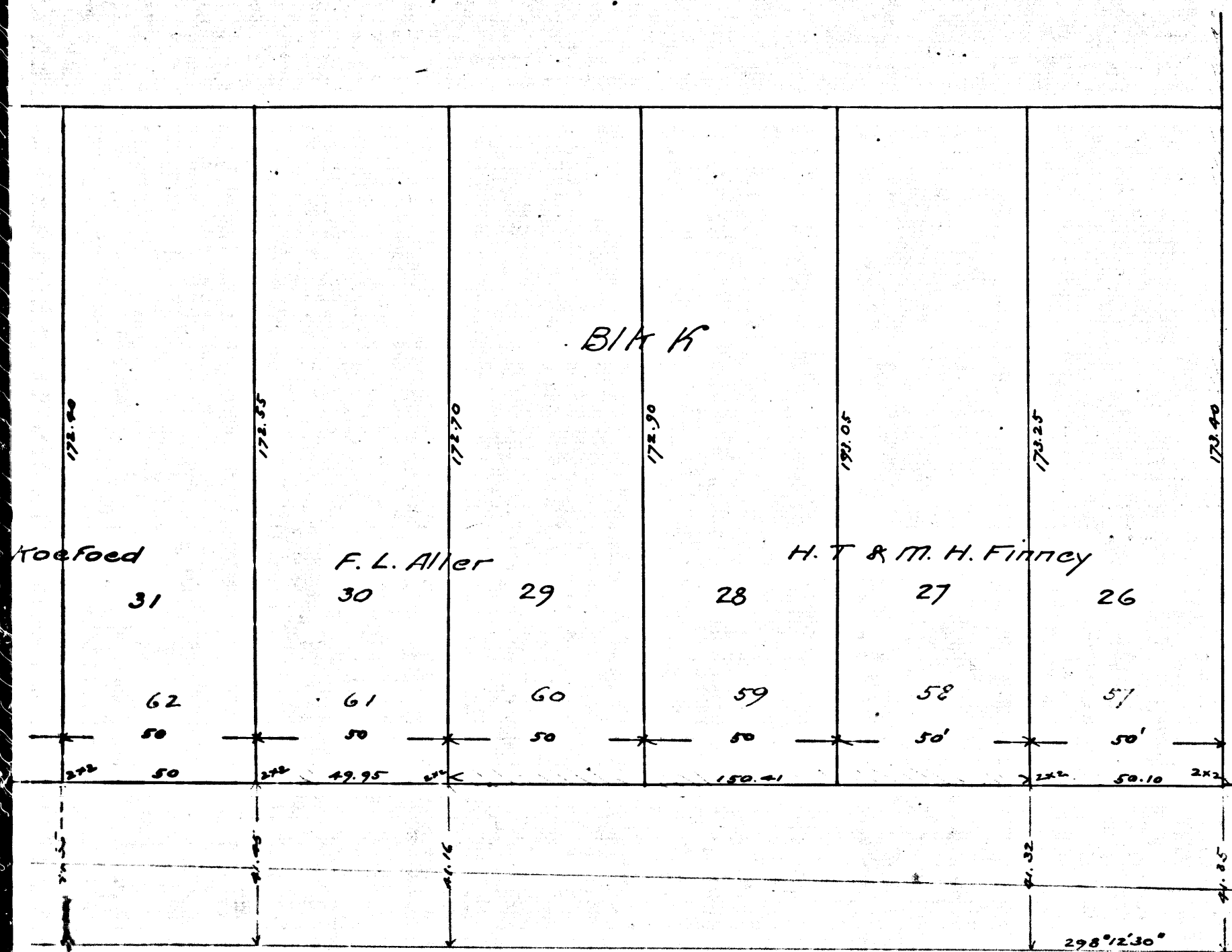


$S.61^{\circ}47'30''E$  3812.17 --1181.92--

1181.92

100  
City of L.A.

R.F. 116  
A 4 OF A 11

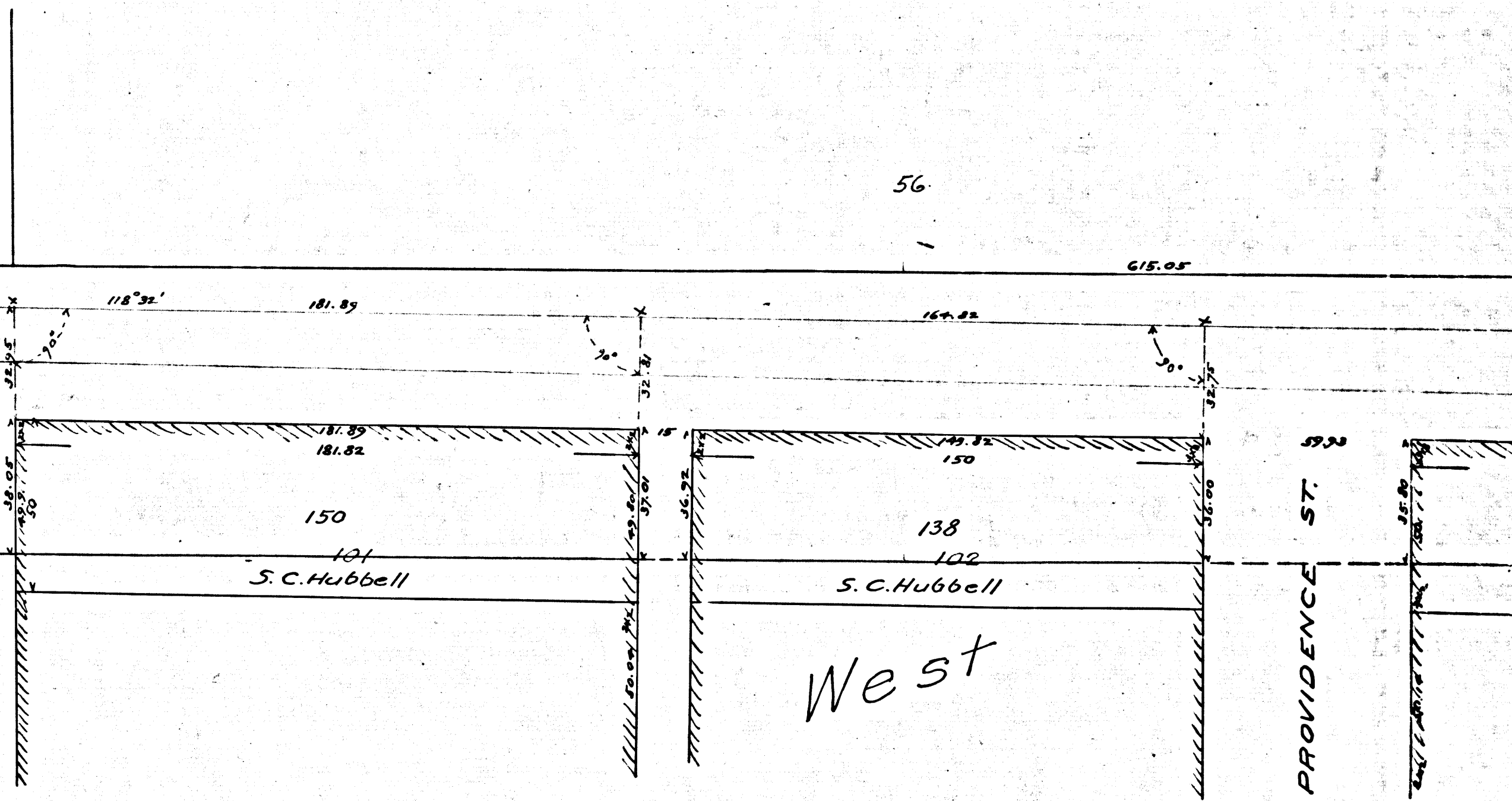


3211.8 from Transit line to center of Diamond St. ST.

5067.8 from Transit line to center of Alvarado ST.

ALVARADO ST.

Downey 1/2 Childs 1/2



West

PROVIDENCE ST.

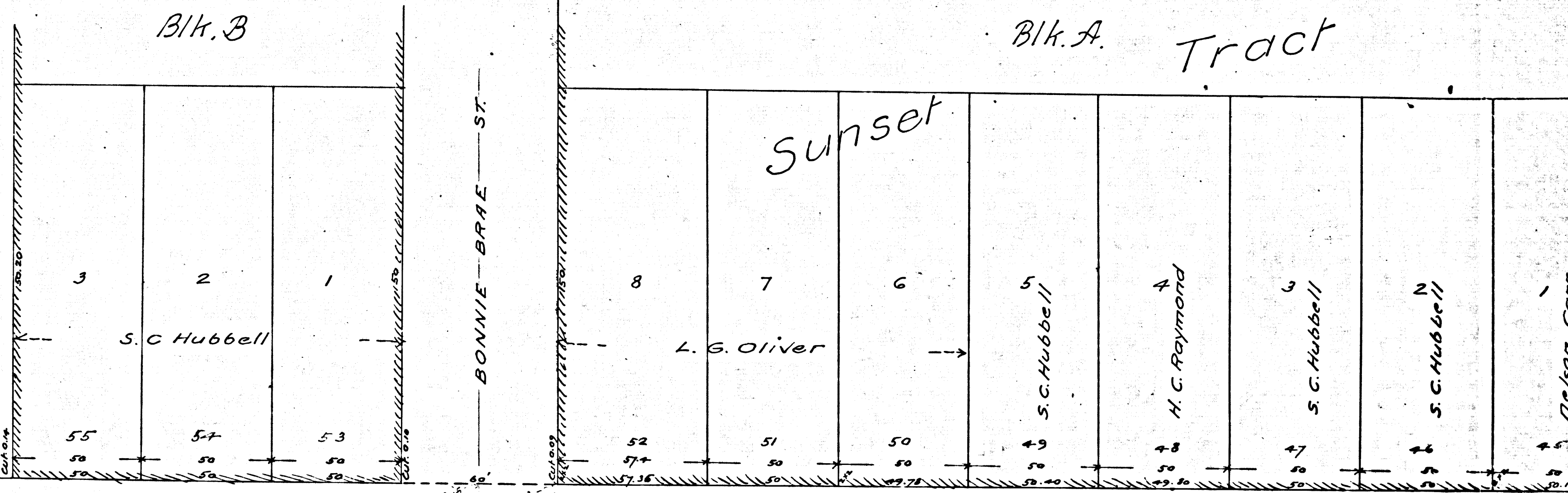
R.F. 116

A 5 OF A 11

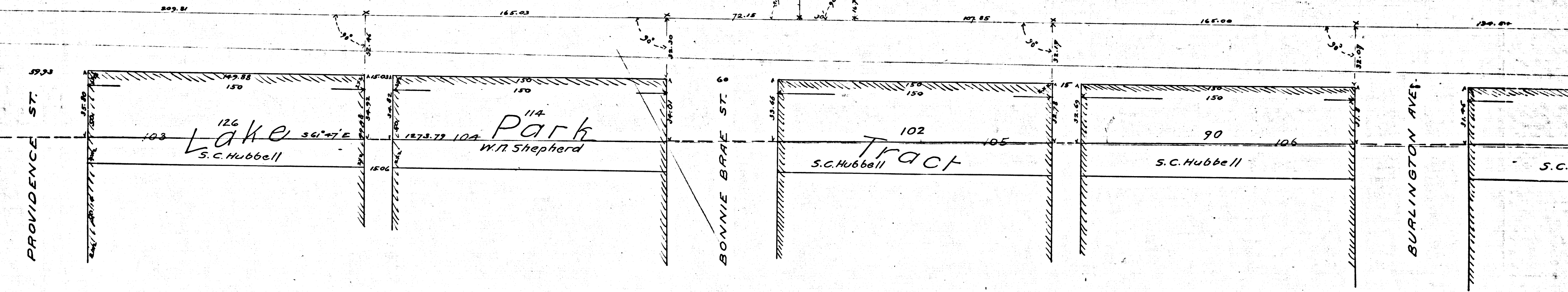
4

Blk. B

Blk. A. Tract



N 61° 47' W 1273.79

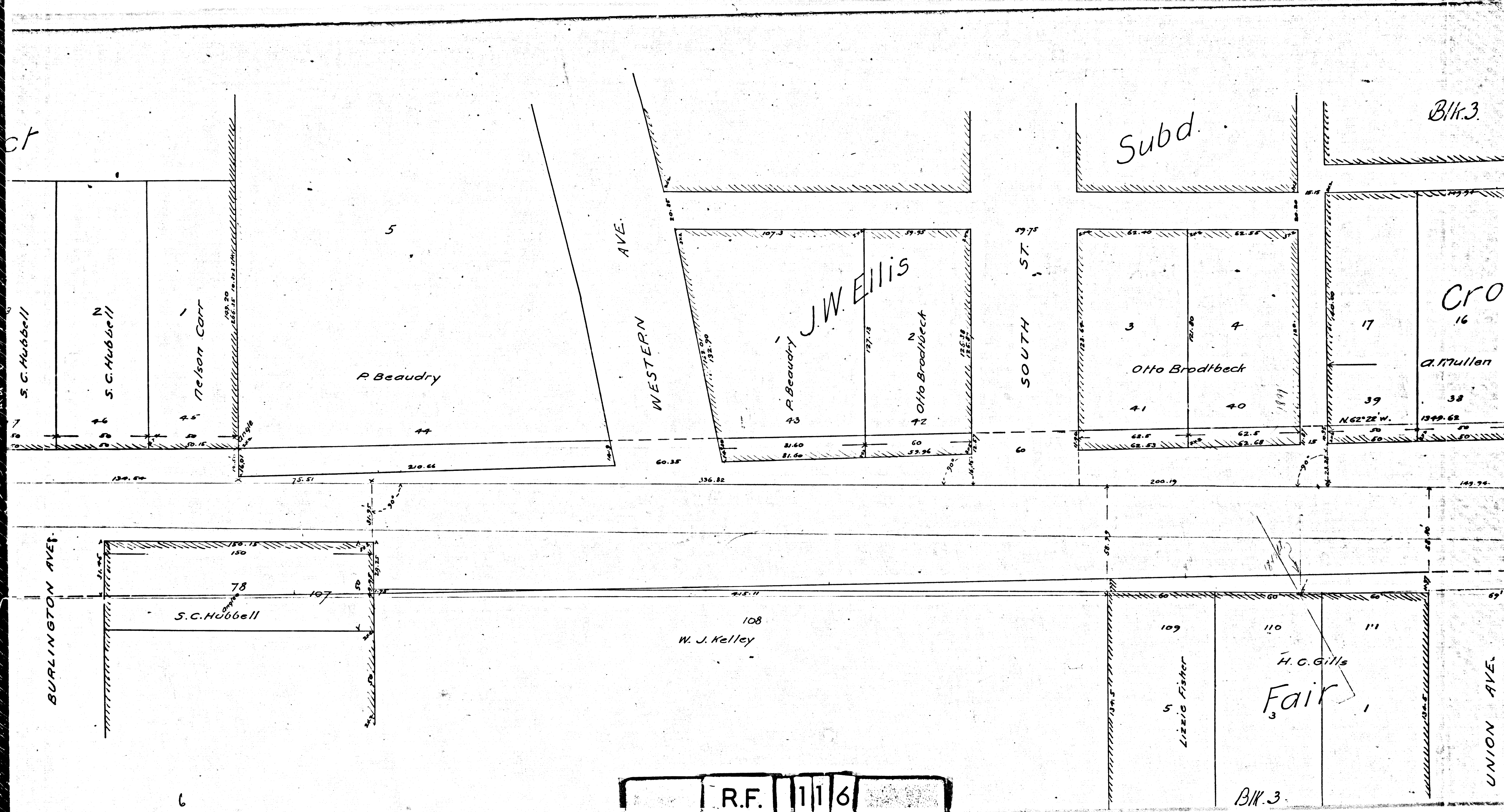


R.F. 116  
 A 6 OF A 11

5

6





R.F. 116  
A 7 OF A 11

# MAP OF WARD STREET

FROM THE GALPIN TRACT TO WEST CITY BDRY.

Scale - 30 feet to one inch.

Note - purple lines show new lines of Street  
 No. established by laws of File of the request  
 Freeman & Teed Feb. 1887  
 This ord. can't be plotted on this map at 4.23 p.m.  
 No. Record

Colinda Blk. 5

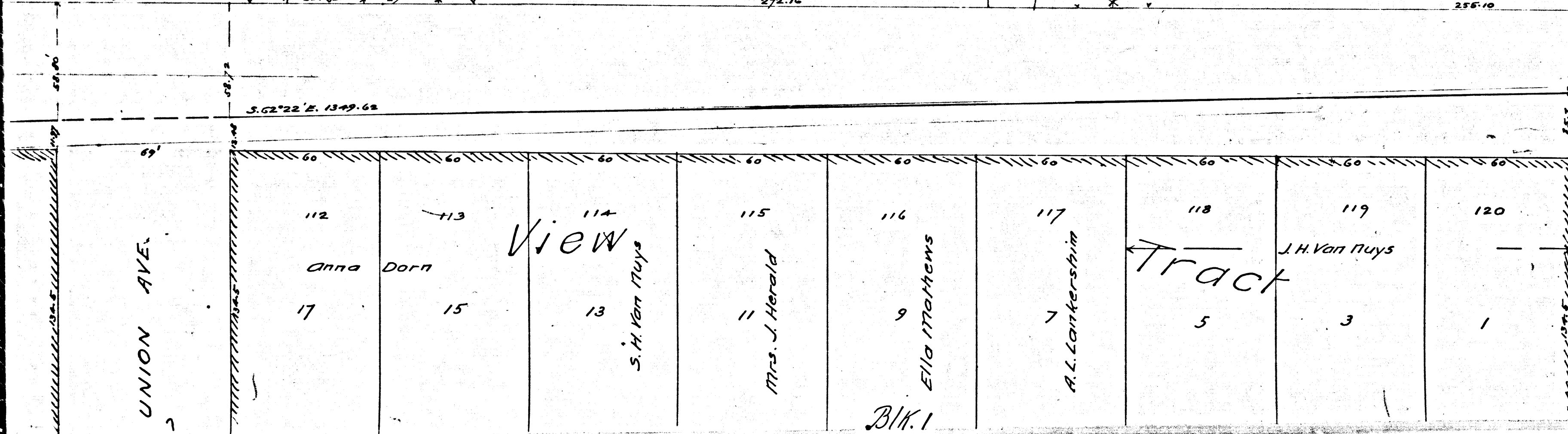
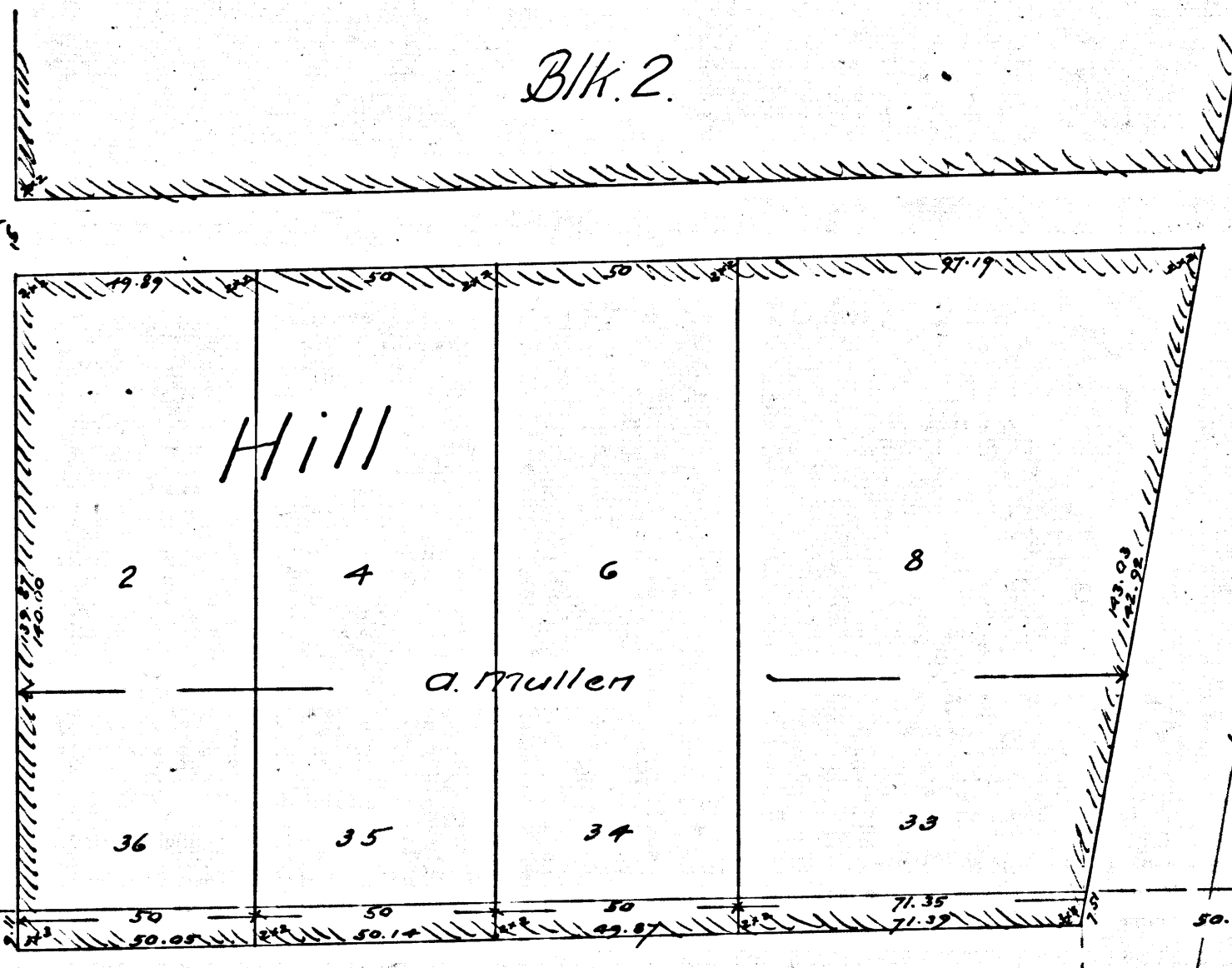
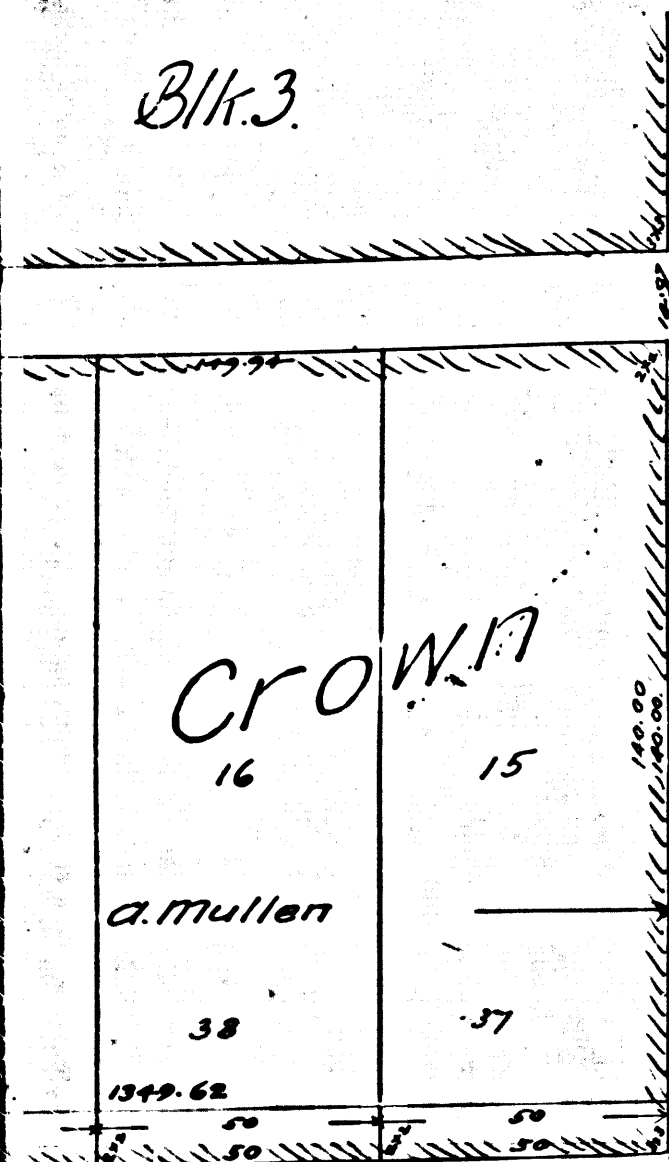
C.E. Day & Kate A. Gard

32

N. 61° 29' W 150'

Blk. 3

Blk. 2



R.F. 116  
 A 8 OF A 11



# REET

CITY BDRY.

Park

Street  
or Filed at the request of  
Freeman G Teed Feb 19, 1890.  
at 4.23 p.m. No 11  
Recorders Office

Blk. 5

as this map is incorrectly drawn,

Blk. 10

Tract

COLUMBIA AVE.

WITMER ST.

Blk. 5

Bentley and Crippen's

Fourth

B.W. 2

42 43 44  
G.E. Day  
31 30 29

11 10  
J. A. Bernstein

9 8  
G.M. Blake  
J. Logan

7 6  
M. Dougherty  
W. F. Gibson

23 22  
20 19

approximate line of st

VACAT

122  
Amanda Rivers

124 125  
T. Bradshaw

Tract

128 129  
G. R. Shatto

131 132  
G. R. Shatto

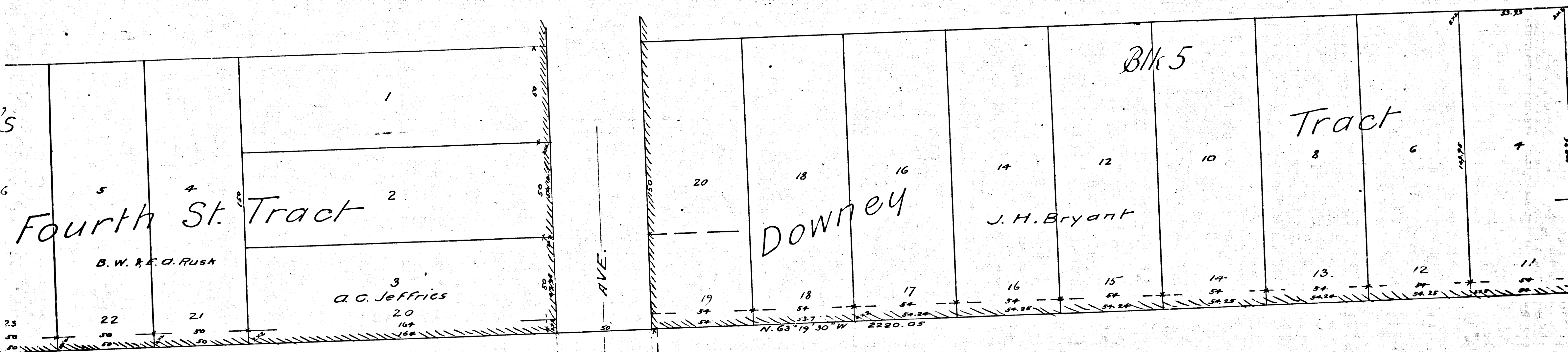
134  
H. M. Bristol

135  
G. R. Shatto

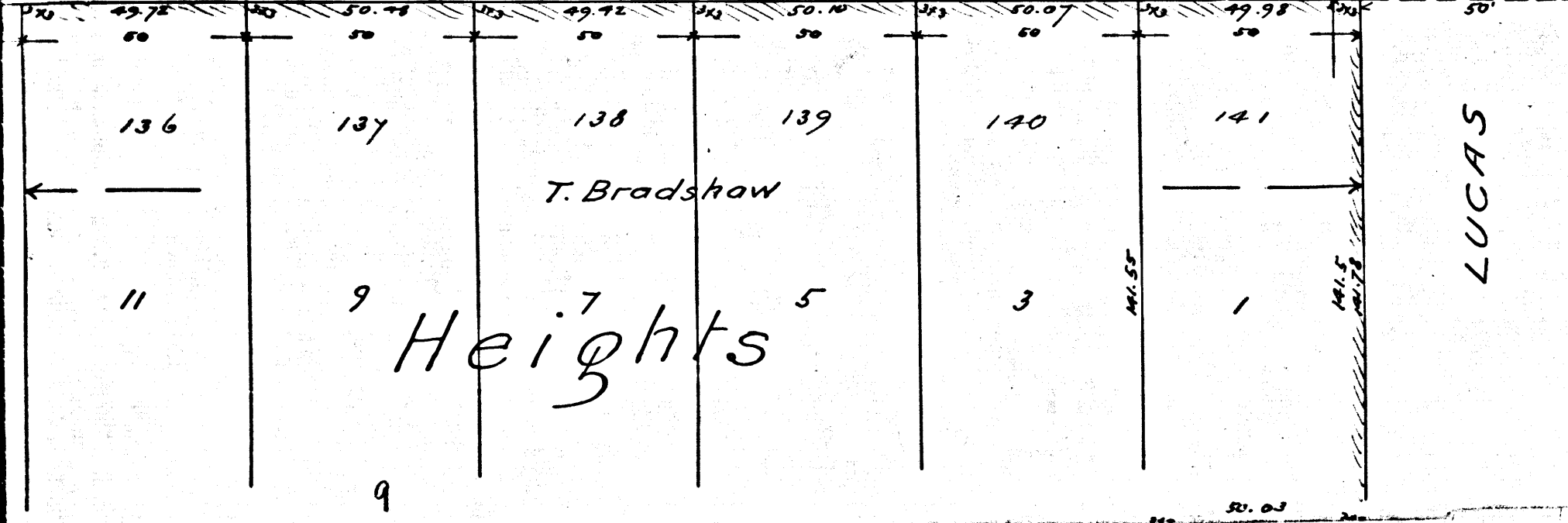
Orange

R.F. 116

A 9 OF A 11



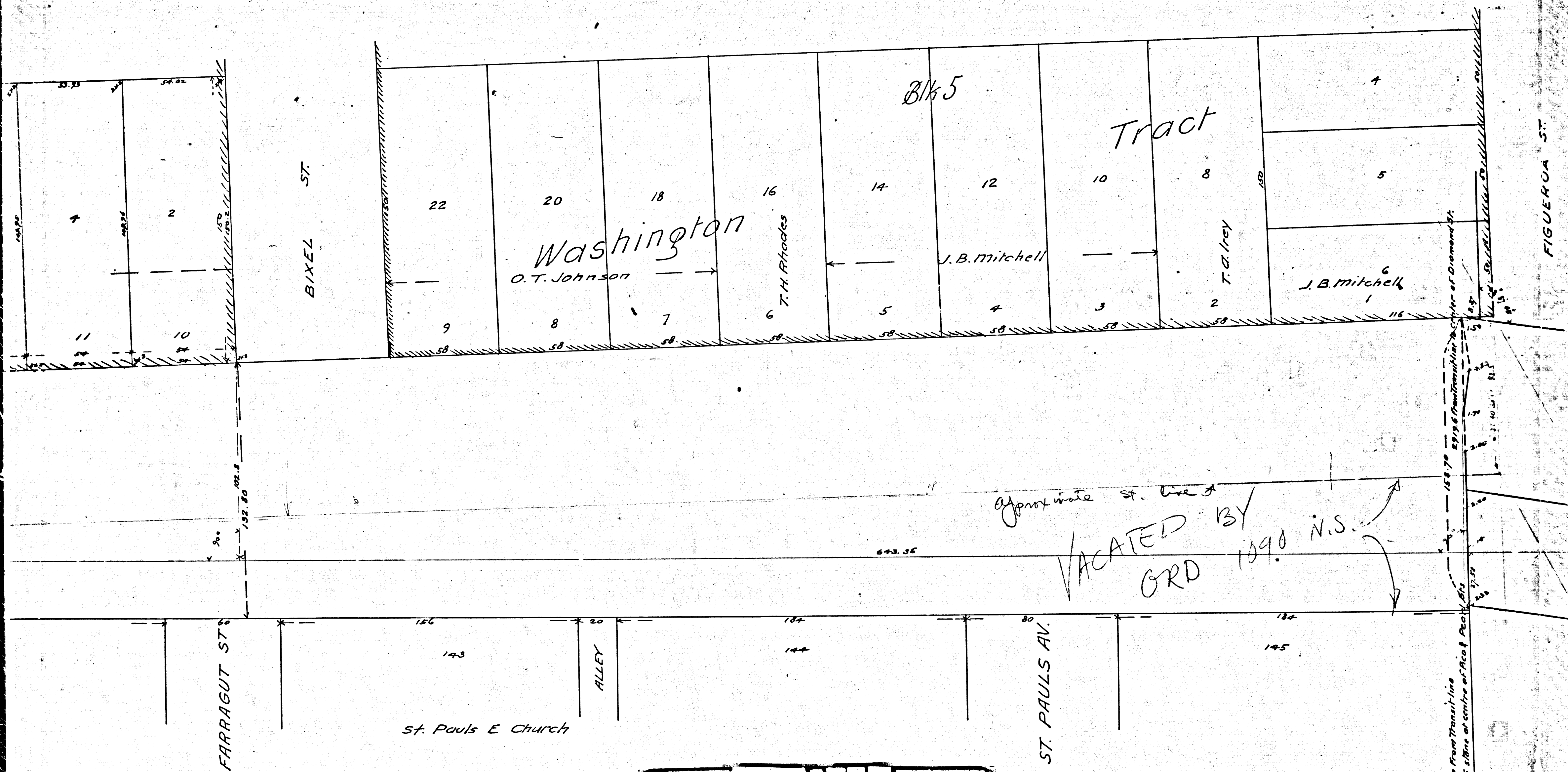
ACATED BY ORD. NO. 1090 N.S.



- E.K. Green --- 7/33
- E.W. Jones --- 7/33
- John O'Neil --- 7/33
- Siegel --- 7/33
- Sarah A. Stewart 7/33

R.F. 116  
 A 10 OF A 11





R.F. 116

A 11 OF A 11